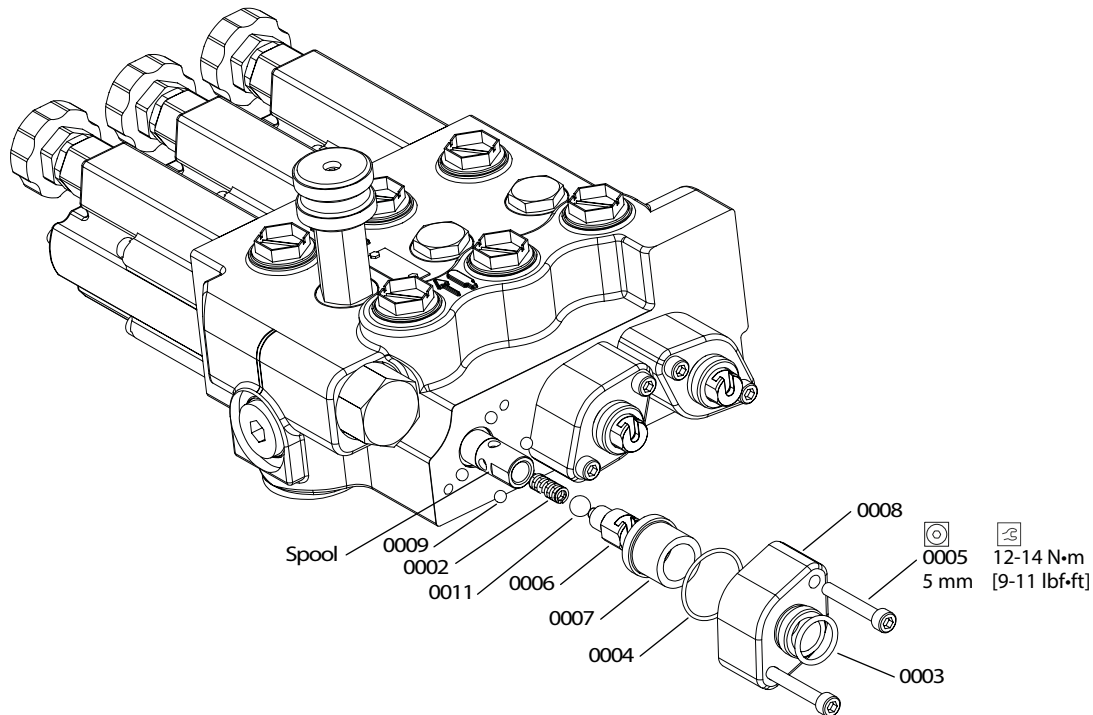


Service Kit Instructions

Control Valves

Detent float deluxe rear replacement procedure



- Disassembly instructions**
1. Clean valve to remove debris and avoid contamination.
 2. Remove end cap screws (0005) using a 5 mm internal hex wrench.
 3. On the clevis end adaptor (0006) and the main spool there are two 0,562" flats for unscrewing this joint. Remove the clevis end adaptor (0006).
 4. After disassembling the clevis end adaptor (0006) from the spool, remove the detent sleeve (0007), steel balls (0009 and 0011) and the detent spring (0002) from the spool.
 5. Thoroughly clean and dry all parts which are to be reassembled using a suitable solvent, making sure to remove the old lubricant.

- Assembly instructions**
1. Apply a generous amount of grease to the detent spring (0002) and insert into spool end.
 2. Insert large ball (0011) into spool end.
 3. Apply generous amount of grease to small detent balls (0009), insert one detent ball into each hole located on the outside of the spool.
 4. To assemble the detent sleeve over the spool, push in the large steel ball (0011) until it is past the center line of the small detent balls (0009). Slide the detent sleeve (0007) over the detent balls (0009), for a total of four balls.
 5. Insert the clevis end adaptor (0006) into the spool end and torque to 19 - 22 ft./lbs.
 6. Lubricate and install the two o-rings (0004 and 0003) onto the end cap (0008). Place the end cap (0008) over the sleeve assembly (0007) and align the mounting holes with those of the valve body. Install mounting screws (0005). Liquid lock threads per ES-22-A and torque 9 - 11 ft./lbs.