

# Check Valves

## SPC2-10

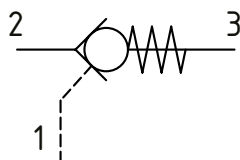
Pilot Operated Check Valve, Port 1 Pilot to Open

210 bar [3000 psi] • 23 l/min [6 US gpm]

### DESCRIPTION AND OPERATION

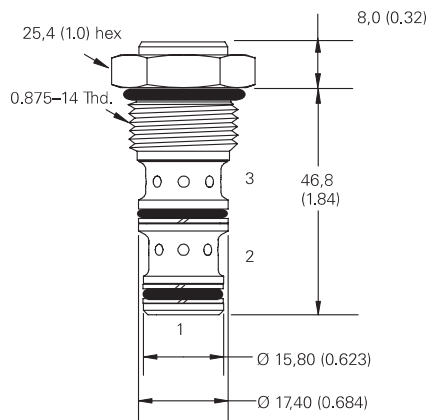
This is a pilot operated check valve where free flow takes place from port 2 to 3 and is blocked from port 3 to 2 until pilot pressure is applied to port 1.

### SCHEMATIC



### DIMENSIONS

mm [in]

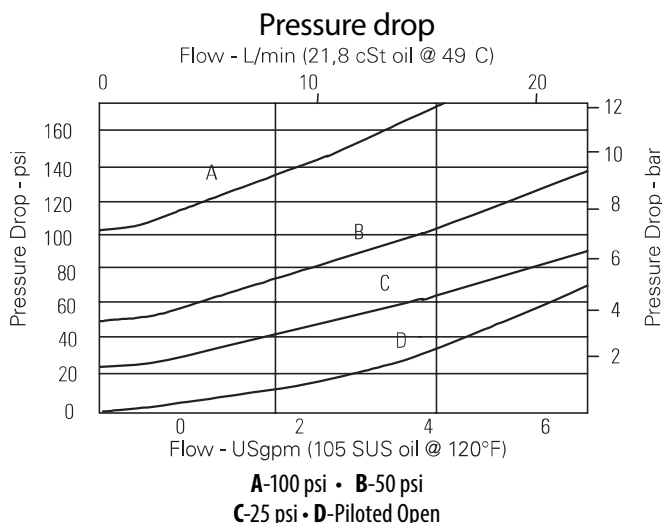


**Installation torque**  
**A** - 47-54 Nm [35-40 ft. lbs]  
**S** - 68-75 Nm [50-55 ft. lbs]

### PERFORMANCE DATA

|                       |   |
|-----------------------|---|
| <b>Rated pressure</b> | <b>210 bar [3000 psi]</b>                 |
| <b>Rated flow</b>     | <b>23 l/min [6 US gpm]</b>                |
| <b>Leakage</b>        | 5 drops/min. maximum @ 210 bar [3000 psi] |
| <b>Weight</b>         | 0.08 kg [0.18 lb]                         |
| <b>Pilot Ratio</b>    | 4:1                                       |
| <b>Cavity</b>         | SDC10-3                                   |

### PERFORMANCE CURVES



### MODEL CODE

**SPC2 - 10 - V - P - 3B - 50**

#### Seal Option

| Code                         | Seal Kit  |
|------------------------------|-----------|
| Omit-Buna-N                  | 02-153267 |
| V-Viton                      | 02-173666 |
| U-Buna-N with no pilot seals | 02-153267 |
| W-Viton with no pilot seals  | 02-173666 |

#### Crack Pressure

| Code | Bar | Psi   |
|------|-----|-------|
| 25   | 1.7 | [25]  |
| 50   | 3.5 | [50]  |
| 100  | 6.9 | [100] |

#### Housing

| Code | Ports      | Aluminum standard duty | Aluminum heavy duty |
|------|------------|------------------------|---------------------|
| 0    | No Housing |                        |                     |
| 3B   | 3/8" BSP   | 02-173358              |                     |
| 6T   | #6 SAE     | 566162                 |                     |
| 2G   | 1/4" BSP   |                        | 876705              |
| 3G   | 3/8" BSP   |                        | 876714              |
| 6H   | #6 SAE     |                        | 876704              |
| 8H   | #8 SAE     |                        | 876711              |

\* Aluminum bodies are to be used for pressures less than 210 bar [3000 psi].  
 \* Additional housings available