

Non-Modular Specialty Lubricators

Non-Modular Specialty Lubricators . . .175-178

NAL430, 460 Micro Mist Lubricator 176

NALF400-900 Auto Feed Lubricator 177-178

Warranty Information 179

Micro Mist Lubricators
NAL430, 460



NAL430

Specifications

	NAL430	NAL460
Proof pressure psig (MPa)	220 (1.5)	
Max. operating pressure psig (MPa)	150 (1.0)	
Ambient & fluid temperature	40 ~ 140° F (5 ~ 60° C)	
Recommended lubricant	Turbine oil #1 (ISO VG32)	
Bowl	Polycarbonate	
Body	ZDC	

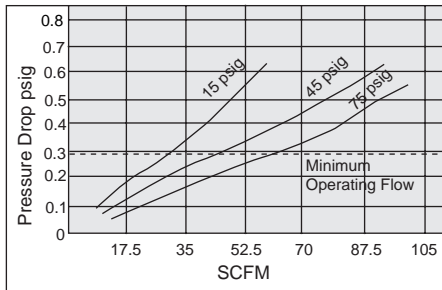
Model

Description	Low pressure NAL430	High pressure NAL 460	
Pressure regulating psig (MPa)	7~30 (0.05~2.0)	7~150 (0.05~1.0)	
Pipe size	1/4 • 3/8 • 1/2	1/4 • 3/8 • 1/2	
Oil capacity oz (cm ³)	7 (206)	7 (206)	
Weight lbs (kgf)	2.6 (1.18)	2.6 (1.18)	
Accessories	Standard	Bowl Guard	•
	Option	Bracket	B44P
34 oz metal bowl	0	0	
With float switch	0	0	
Metal bowl	0	0	
Applications	Cooling, bearing gear-chain frictions surfaces	Cylinders, sol. valves, hand valves, air tools	
Maximum piping distance ft. (m)	33 (10)	33 (10)	

Float Switch Specifications

Description	IS410-1~2
Capacity	AC: 15VA, DC: 15W
Voltage	AC100V, DC250V
Proof Pressure psig (MPa)	220 (1.5)
Max. Oper. Pressure psig (MPa)	150 (1.0)
Media	Water, Oil
Ambient and Fluid Temperature	40~140° F (5~60° C)

Flow Characteristics

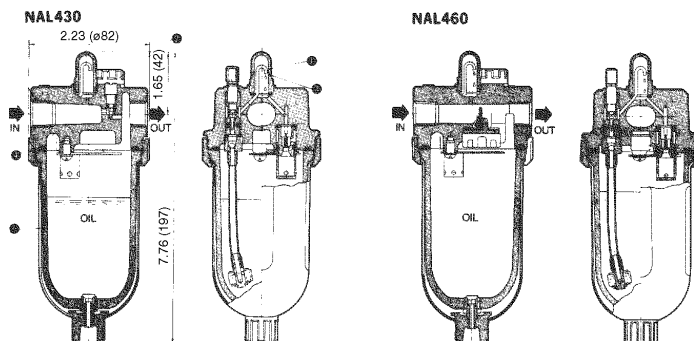


How To Order

NAL 4 3 0-N 02 B 1

- Construction type**
 - 3 — Low pressure
 - 6 — High pressure
- Pipe size**
 - 02 — 1/4
 - 03 — 3/8
 - 04 — 1/2
- Options**
 - 1 — 34 oz (1000cm³) metal bowl w/sight glass
 - 1S-1 — 34 oz (1000cm³) metal bowl w/sight glass & float switch (float down- ON)
 - 1S-2 — 34 oz (1000cm³) metal bowl w/sight glass & float switch (float down- OFF)
 - 2 — Metal Bowl
- Options**
 - B — Bracket

Construction



Parts

No.	Name	Material	Part No.
①	Needle valve assembly	C3604	125217PA
②	Fill plug assembly	ZDC	12314PA
③	Sight dome	Polycarbonate	12316
④	O-ring	NBR	113136
⑤	Bowl and Guard	SPC/Polycarbonate	NAL12-4-3



Lubricator
NALF400



Tank
NALT-5

Specifications

Auto Feed Lube NALF	NALF400	NALF400-N06	NALF500	NALF600	NALF800	NALF900
Max. supply pressure psig (MPa)	220 (1.5)					
Max. operating pressure psig (MPa)	100 (0.7)					
Pressure differential operating range* psig (MPa)	15~90 (0.1~0.6)					
Operating temp. range	40° ~140° F					
Recommended lubricant	Turbine Oil #1 (ISO VG32)					
Bowl	Polycarbonate					

Auto Feed Tank NALT	NALT-5	NALT-5-1S-*1	NALT-9	NALT-9-1S-*1
Max. supply pressure psig (MPa)	220 (1.5)			
Max. operating pressure psig (MPa)	150 (1.0)			
Operating temp. range	23° ~140° F (-5° ~60° C)			
Recommended lubricant	Turbine Oil #1 (ISO VG32)			
Body	ADC			

*Between tank and line pressure

Auto Feed Lubricator NALF Series

Model	NALF400			NALF400-N06	NALF500		NALF600	NALF800		NALF900
Pipe size	1/8	3/8	1/2	3/4	3/4	1	1	1-1/4	1-1/2	2
Min. flow for oil drip scfm	2.2	3.5	4.2	4.2	6.6		7.7	16.1	23	63
Weight lbs (kgf)	1.87 (0.85)			1.94 (0.88)	2.21 (1.0)		2.54 (1.15)	4.08 (1.85)		4.19 (1.9)
Bowl guard (standard)	•			•	•		•	•		•
Bracket	B44P			B44-1P	B45-1P	B45-2P	B46P	—		—

*With supply pressure of 73 psig oil drip rate 5 drops/min, use turbine oil #1 VG32, Temperature 68° F

Auto Feed Tank NALT Series

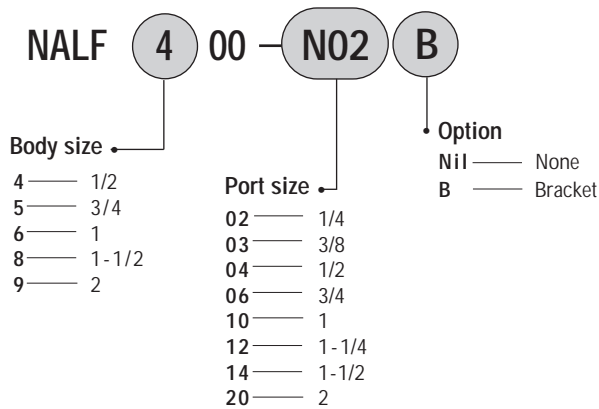
Model	NALT-5	NALT-5-IS-*1~2	NALT-9	NALT-9-IS-*1~2
Pipe size	Air IN: 1/4, OUT: 3/8			
Oil capacity oz (cm3)	169 (5000)	169 (5000)	304 (9000)	304 (9000)
Weight lbs (kgf)	27.8 (12.6)	29.1 (13.2)	57.3 (26.0)	58.7 (26.6)
Float switch specification*	—		—	
Voltage	—		100V 0.25A	100V 0.25A

*Float switch: Both a low level and high level float switch is available. Add Suffix 1 for a low level (Float down ON), 2 for high level switch (Float down OFF).

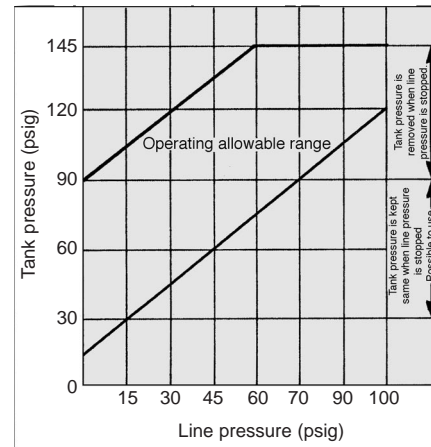
Auto Feed Lubricators

NALF400, 400-06, 500, 600, 800, 900

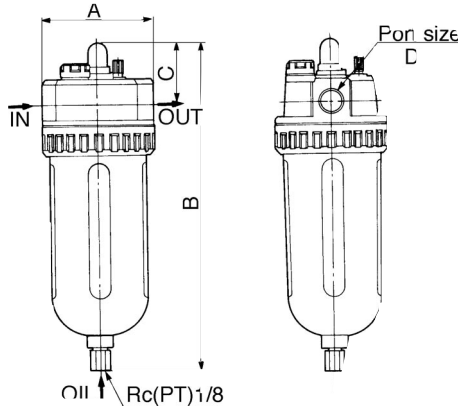
How To Order



Pressure Characteristics

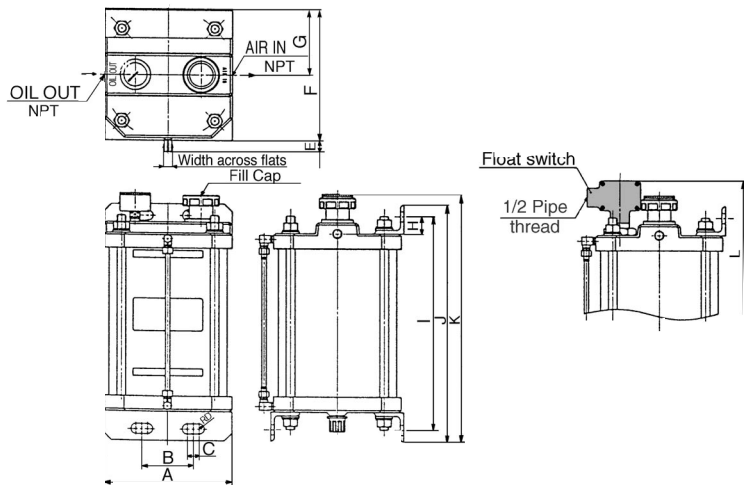


Dimensions/Auto feed lubricator



Model	A	B	C	Port Size D
NALF400	3.15 (80)	9.39 (238.5)	1.73 (44)	1/4 • 3/8 • 1/2
NALF400-N06	3.35 (85)	9.70 (246.5)	1.81 (46)	3/4
NALF500	3.54 (90)	11.63 (295.5)	1.89 (48)	3/4 • 1
NALF600	3.94 (100)	12.58 (319.5)	2.01 (51)	1
NALF800	3.94 (100)	13.33 (338.5)	2.32 (59)	1-1/4 • 1-1/2
NALF900	3.94 (100)	13.56 (344.5)	2.48 (63)	2

Dimensions/Auto feed tank



Oil Distributor

Model	Number of oil outlets	Remark
VA4	4	Both ends
VA6	6	Both ends
VA10	10	Both ends
VA16	16	Both ends
VB4	4	One side
VB6	6	One side
VB8	8	One side

Float Switch Specifications

Description	IS410-1~2
Capacity	AC: 15VA, DC: 15W
Voltage	AC100V, DC250V
Proof Pressure psig (MPa)	220 (1.5)
Max. Oper. Pressure psig (MPa)	150 (1.0)
Media	Water, Oil
Ambient and Fluid Temperature	40~140° F (5~60° C)

Model	A	B	C	D	E	F	G	H	I	J	K	L
ALT-5	6.85 (174)	2.76 (70)	.63 (16)	.28 (7)	3.58 (91)	4.17 (106)	7.76 (197)	.94 (24)	15.04 (382)	16.30 (414)	16.85 (428)	—
ALT-5-IS	6.85 (174)	2.76 (70)	.63 (16)	.28 (7)	3.58 (91)	4.17 (106)	7.76 (197)	.94 (24)	15.04 (382)	16.30 (414)	16.85 (428)	17.68 (449)
ALT-9	9.21 (234)	4.25 (108)	1.18 (30)	.28 (7)	4.76 (121)	5.39 (137)	10.16 (258)	1.57 (40)	16.61 (422)	18.58 (472)	—	—
ALT-9-IS	9.21 (234)	4.25 (108)	1.18 (30)	.28 (7)	4.76 (121)	5.39 (137)	10.16 (258)	1.57 (40)	16.61 (422)	18.58 (472)	—	18.98 (482)