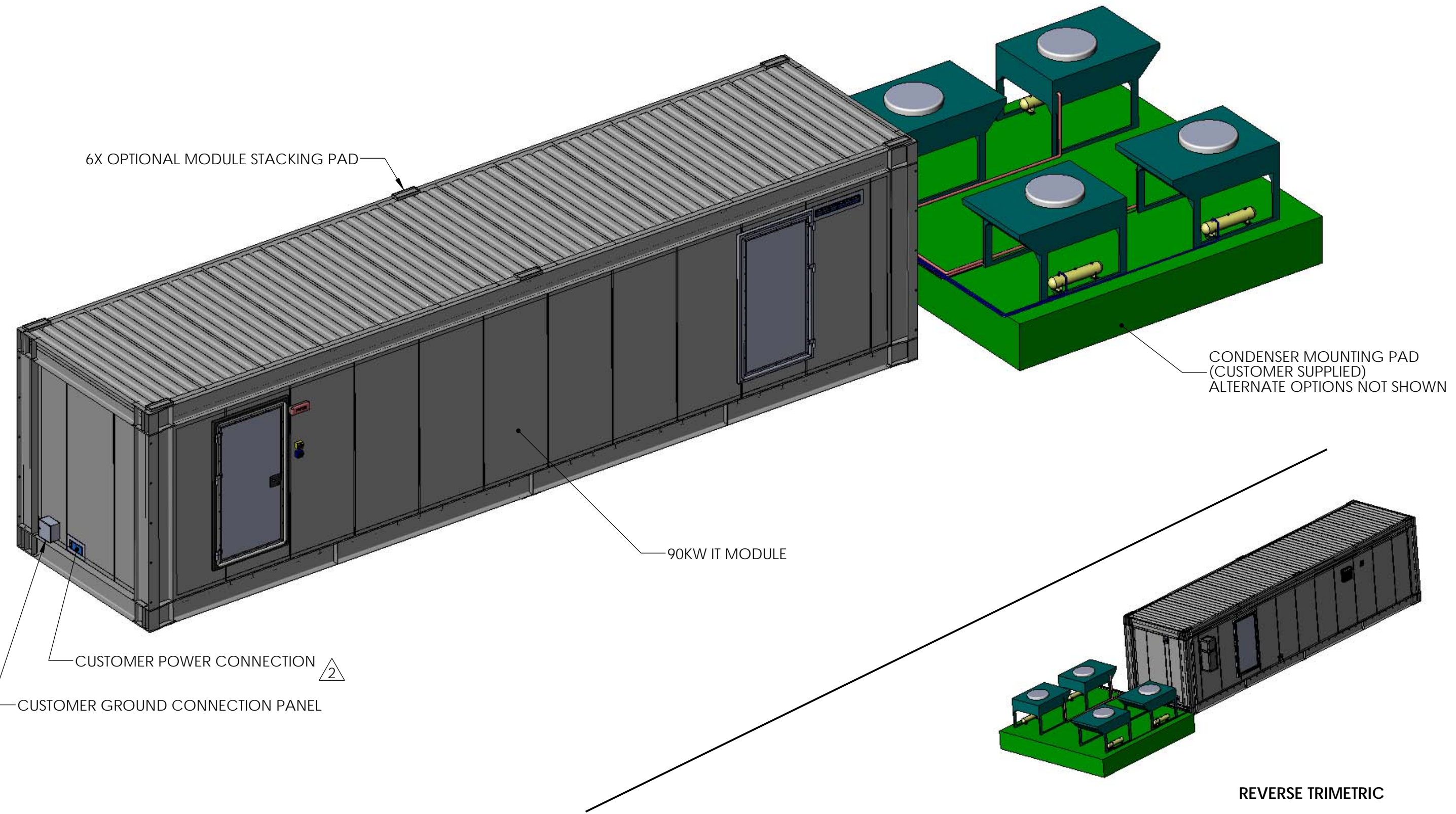


A B C D E F G H

REVISIONS					
REV.	SUFFIX	ECO #	DESCRIPTION	DATE	APPROVED
01			RELEASE TO PRODUCTION	15 JUL 14	KMS
02			ADDED 2 NOTES TO END VIEW SH 2	9 AUG 14	KMS



NOTES, UNLESS OTHERWISE SPECIFIED:

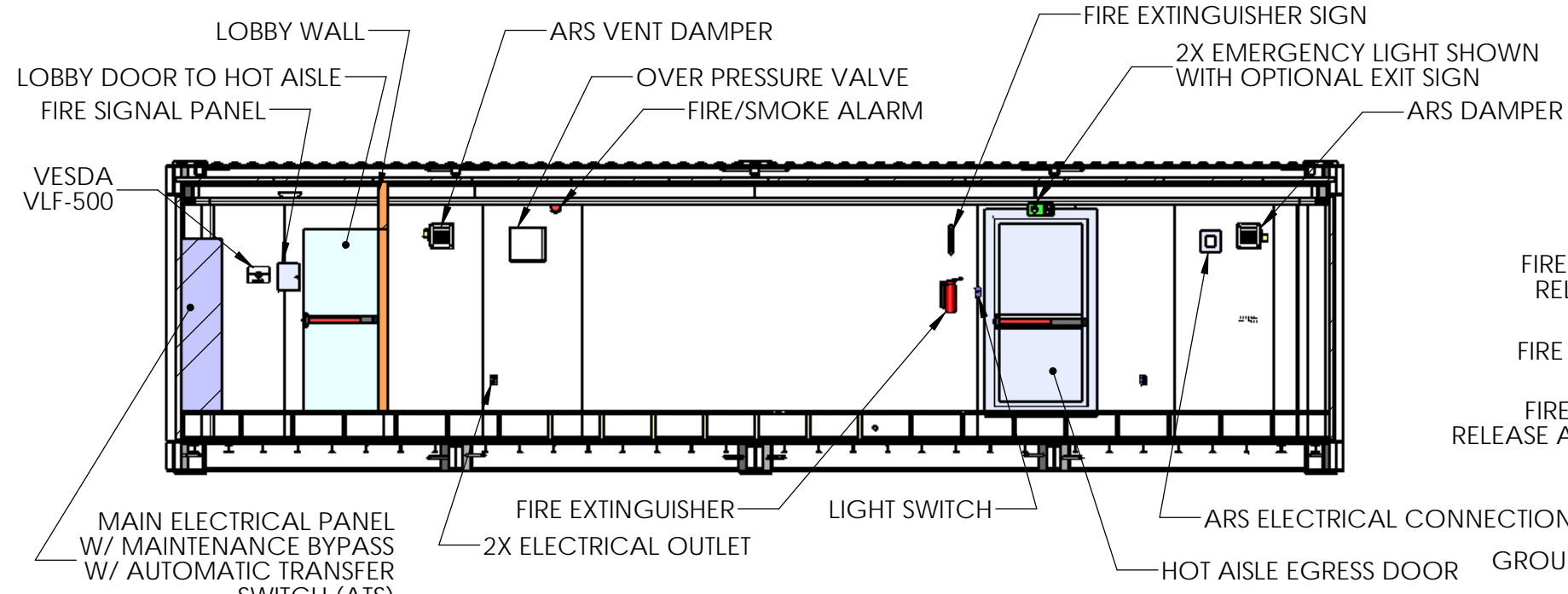
- ALL DIMENSIONS ARE IN MILLIMETERS (INCHES).
- ALL DATA CABLE, POWER CABLE, COOLING PIPING, AND COOLING POWER INTERFACES ARE THROUGH ROXTEC CABLE ENTRY SEALS.

THIS DRAWING AND SPECIFICATIONS HEREIN ARE THE PROPERTY OF SCHNEIDER ELECTRIC AND SHALL NOT BE COPIED, REPRODUCED OR USED IN WHOLE OR IN PART, AS THE BASIS FOR THE MANUFACTURE OR SALE OF ITEMS WITHOUT WRITTEN PERMISSION FROM SCHNEIDER ELECTRIC. THIS DRAWING IS BASED UPON LATEST AVAILABLE INFORMATION AND IS SUBJECT TO CHANGE WITHOUT NOTICE.

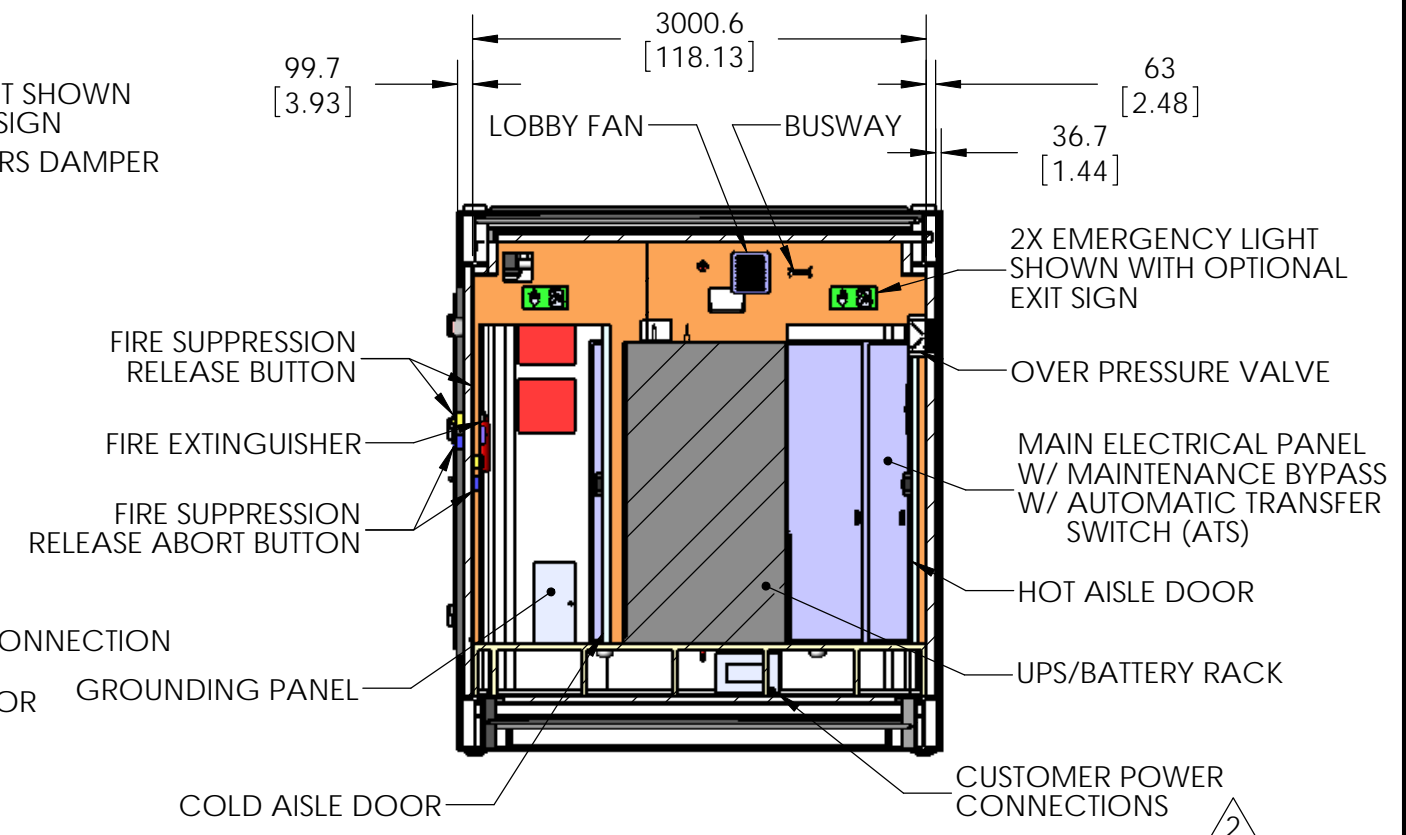


TITLE:	90kW ALL-IN-ONE PRE-FABRICATED IT MODULE, BUSWAY, EMEA		DWG NO.:	PFMIEJ090D1E12B		REV	02
PROJECT:	PRE-FAB SOLUTIONS	SHEET 1 OF 7	ENGINEER:	K SCHALLER	4/3/2014	SIZE	B
			DRAWN:	K SCHALLER	4/3/2014		
			APPROVED:	K SCHALLER	4/3/2014		

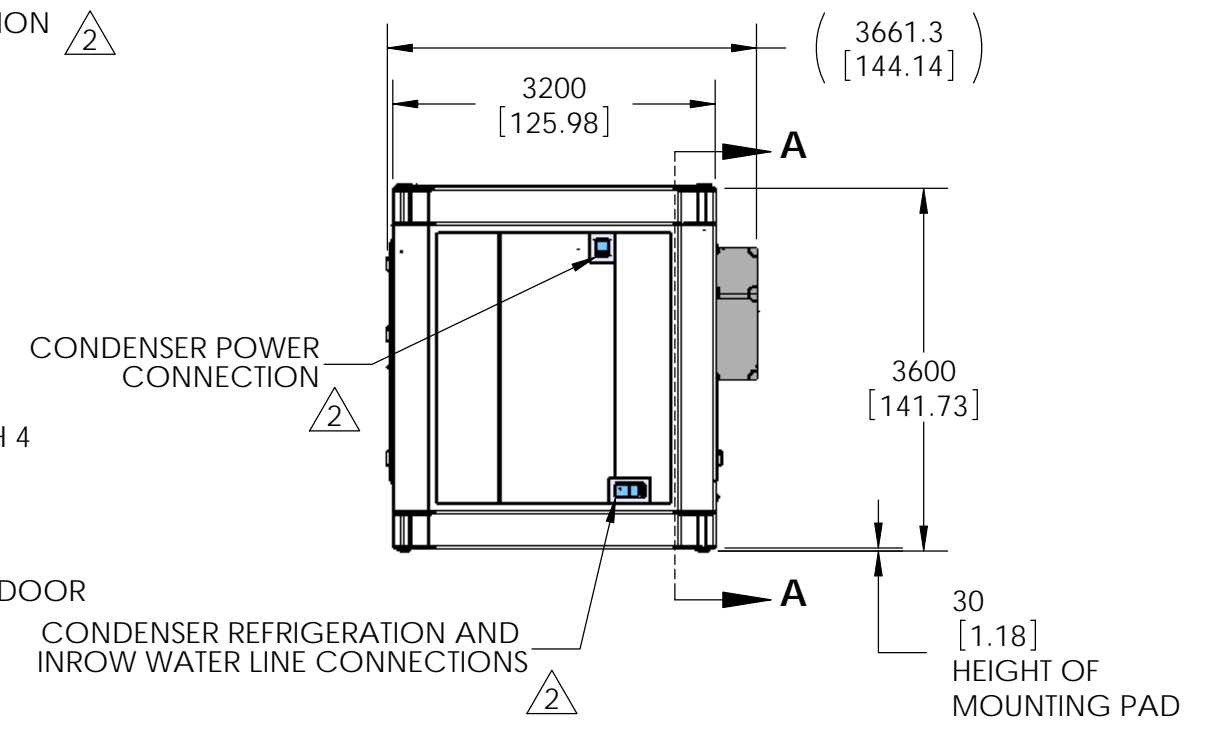
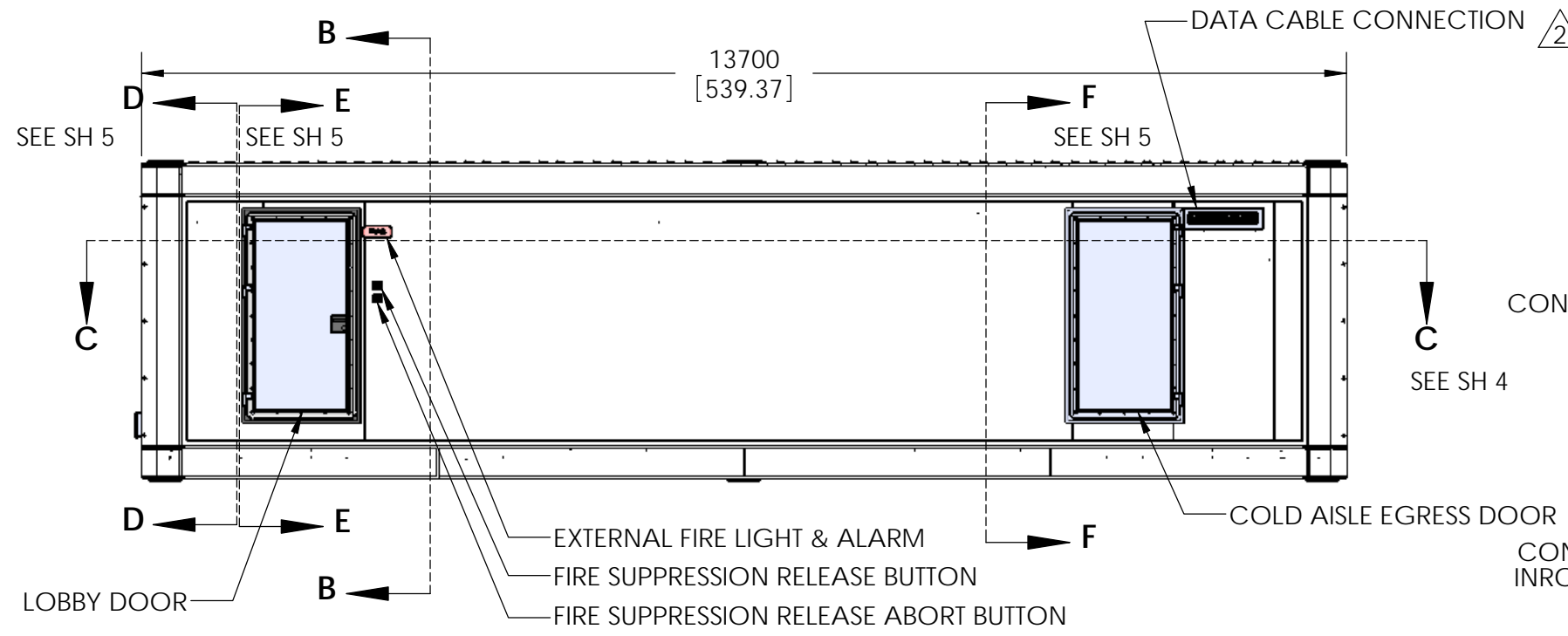
A B C D E F G H



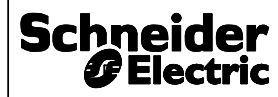
**SECTION A-A**  
SCALE 1 : 75



**SECTION B-B**  
SCALE 1 : 50



THIS DRAWING AND SPECIFICATIONS HEREIN ARE THE PROPERTY OF SCHNEIDER ELECTRIC AND SHALL NOT BE COPIED, REPRODUCED OR USED IN WHOLE OR IN PART, AS THE BASIS FOR THE MANUFACTURE OR SALE OF ITEMS WITHOUT WRITTEN PERMISSION FROM SCHNEIDER ELECTRIC. THIS DRAWING IS BASED UPON LATEST AVAILABLE INFORMATION AND IS SUBJECT TO CHANGE WITHOUT NOTICE.



TITLE: 90kW ALL-IN-ONE PRE-FABRICATED IT MODULE, BUSWAY, EMEA  
PROJECT: PRE-FAB SOLUTIONS SHEET 2 OF 7

DWG NO.	PFMIEJ090D1E12B		REV	02
ENGINEER:	K SCHALLER	4/3/2014	SIZE	B
DRAWN:	K SCHALLER	4/3/2014		
APPROVED:	K SCHALLER	4/3/2014		

A B C D E F G H

1

1

2

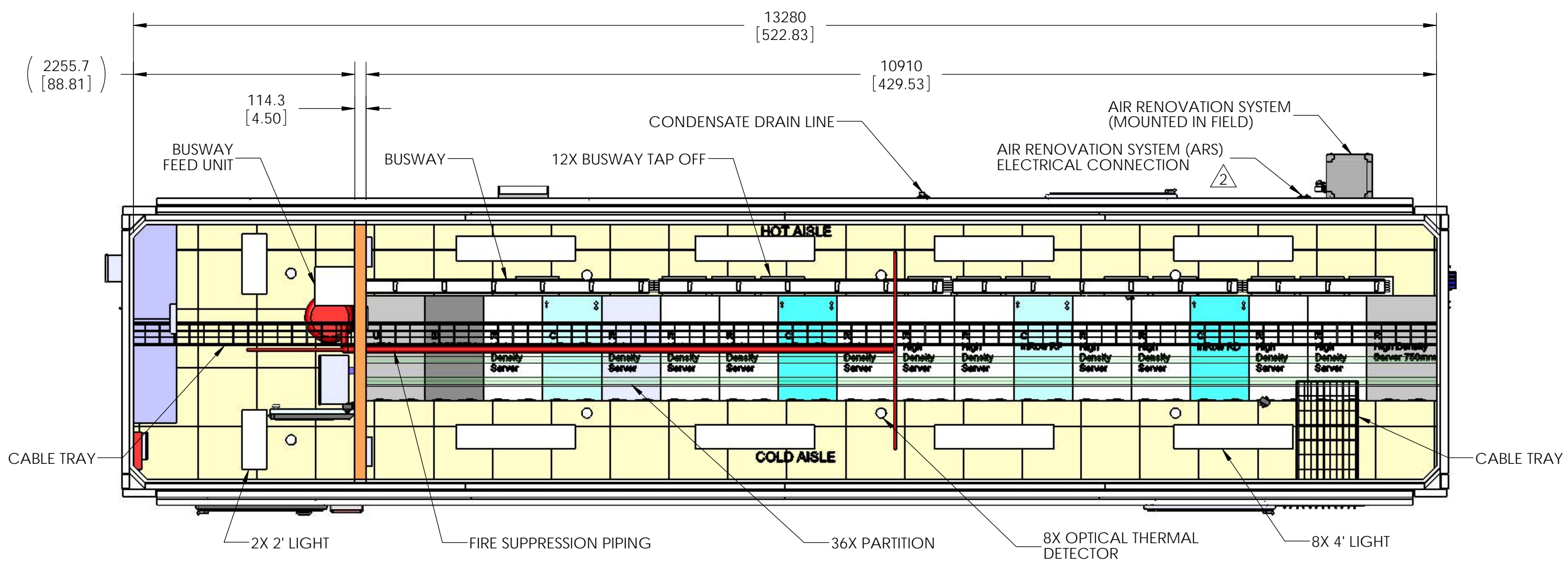
2

3

3

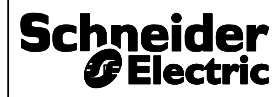
4

4



TOP VIEW  
ROOF & OUTER FRAME NOT SHOWN

THIS DRAWING AND SPECIFICATIONS HEREIN ARE THE PROPERTY OF SCHNEIDER ELECTRIC AND SHALL NOT BE COPIED, REPRODUCED OR USED IN WHOLE OR IN PART, AS THE BASIS FOR THE MANUFACTURE OR SALE OF ITEMS WITHOUT WRITTEN PERMISSION FROM SCHNEIDER ELECTRIC. THIS DRAWING IS BASED UPON LATEST AVAILABLE INFORMATION AND IS SUBJECT TO CHANGE WITHOUT NOTICE.



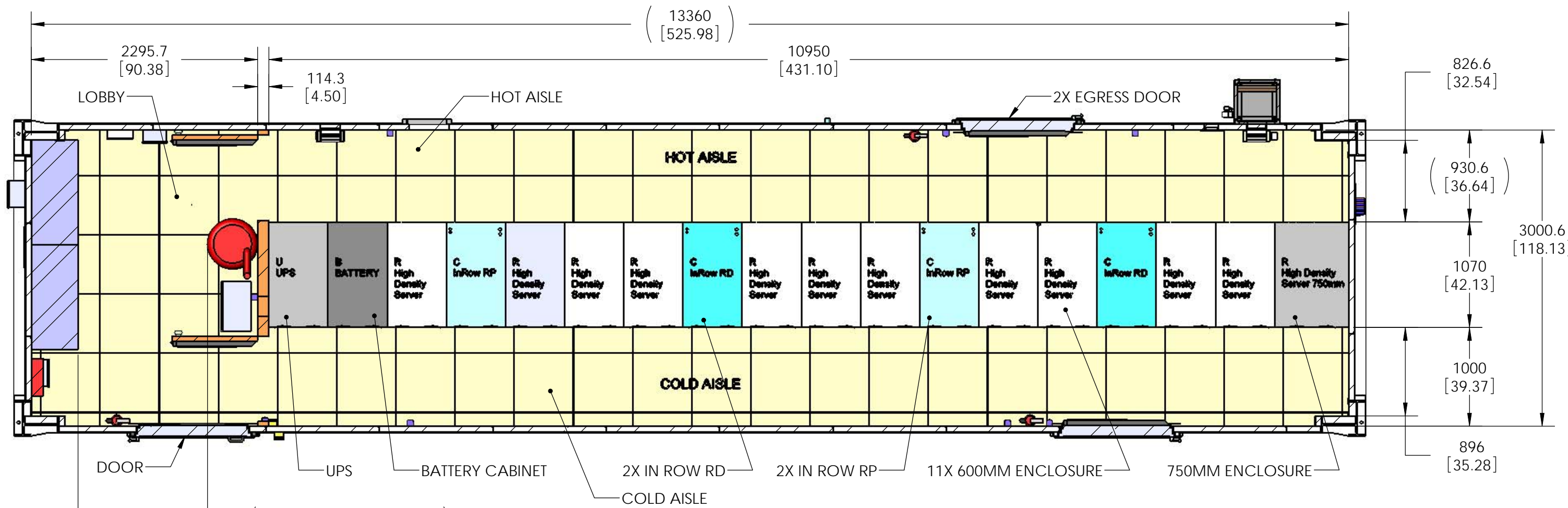
TITLE: 90kW ALL-IN-ONE PRE-FABRICATED IT MODULE, BUSWAY, EMEA

PROJECT: PRE-FAB SOLUTIONS SHEET 3 OF 7

DWG NO.	PFMIEJ090D1E12B		REV	02
ENGINEER:	K SCHALLER	4/3/2014	SIZE	B
DRAWN:	K SCHALLER	4/3/2014		
APPROVED:	K SCHALLER	4/3/2014		

A B C D E F G H





1312.7 [51.68]  
MIN LOBBY CLEARANCE  
W/ 475MM PANEL &  
508MM DIA TANK

**SECTION C-C**  
**SCALE 1 : 40**  
SEE SHEET 2; ZONE E3

THIS DRAWING AND SPECIFICATIONS HEREIN ARE THE PROPERTY OF SCHNEIDER ELECTRIC AND SHALL NOT BE COPIED, REPRODUCED OR USED IN WHOLE OR IN PART, AS THE BASIS FOR THE MANUFACTURE OR SALE OF ITEMS WITHOUT WRITTEN PERMISSION FROM SCHNEIDER ELECTRIC. THIS DRAWING IS BASED UPON LATEST AVAILABLE INFORMATION AND IS SUBJECT TO CHANGE WITHOUT NOTICE.



TITLE: 90kW ALL-IN-ONE PRE-FABRICATED IT MODULE, BUSWAY, EMEA  
PROJECT: PRE-FAB SOLUTIONS SHEET 4 OF 7

DWG NO.	PFMIEJ090D1E12B		REV	02
ENGINEER:	K SCHALLER	4/3/2014	SIZE	B
DRAWN:	K SCHALLER	4/3/2014		
APPROVED:	K SCHALLER	4/3/2014		

FIRE/SMOKE ALARM  
HSR-INT24

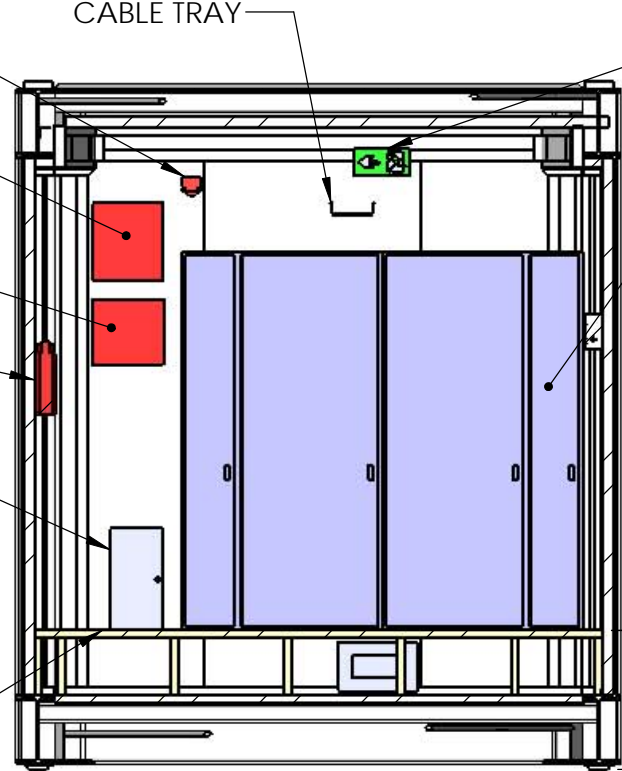
FIRE SUPPRESSION  
POWER SUPPLY  
HLSPS25

EXTINGUISHING GAS  
CONTROL PANEL  
RP1r

FIRE EXTINGUISHER

GROUNDING  
PANEL

RAISED FLOOR



EMERGENCY LIGHT  
SHOWN WITH OPTIONAL  
EXIT SIGN

MAIN ELECTRICAL PANEL  
W/ MAINTENANCE BYPASS  
W/ AUTOMATIC TRANSFER  
SWITCH (ATS)

342.9  
[13.50]

734.9  
[28.93]

**SECTION D-D**  
**SCALE 1 : 40**  
SEE SHEET 2; ZONE A3

BUSWAY

BUSWAY TAP OFF

ARS GRILL & DAMPER

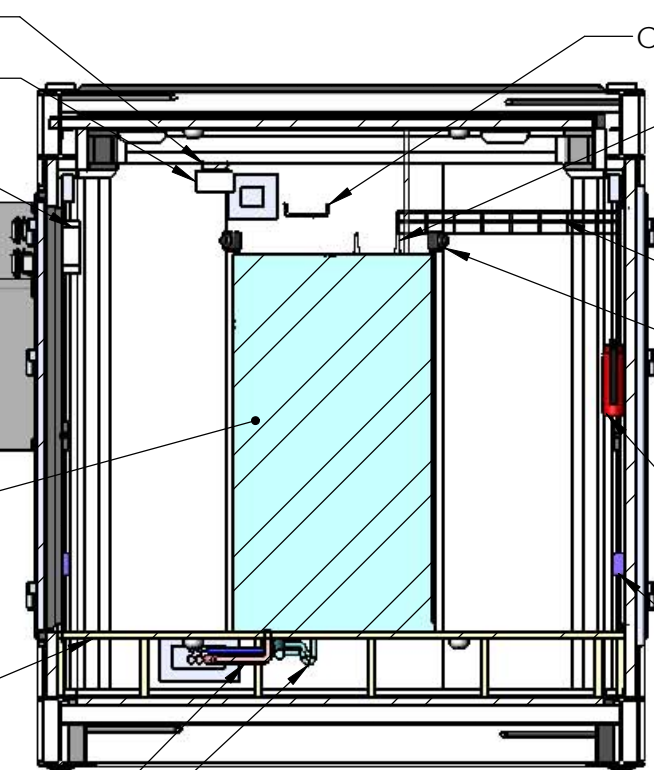
AIR RENOVATION  
SYSTEM (ARS)

ENCLOSURES/  
INROW COOLER

RAISED FLOOR

IN ROW COOLER PIPING

CONDENSATE DRAIN TRAP



CABLE TRAY

2X PARTITION

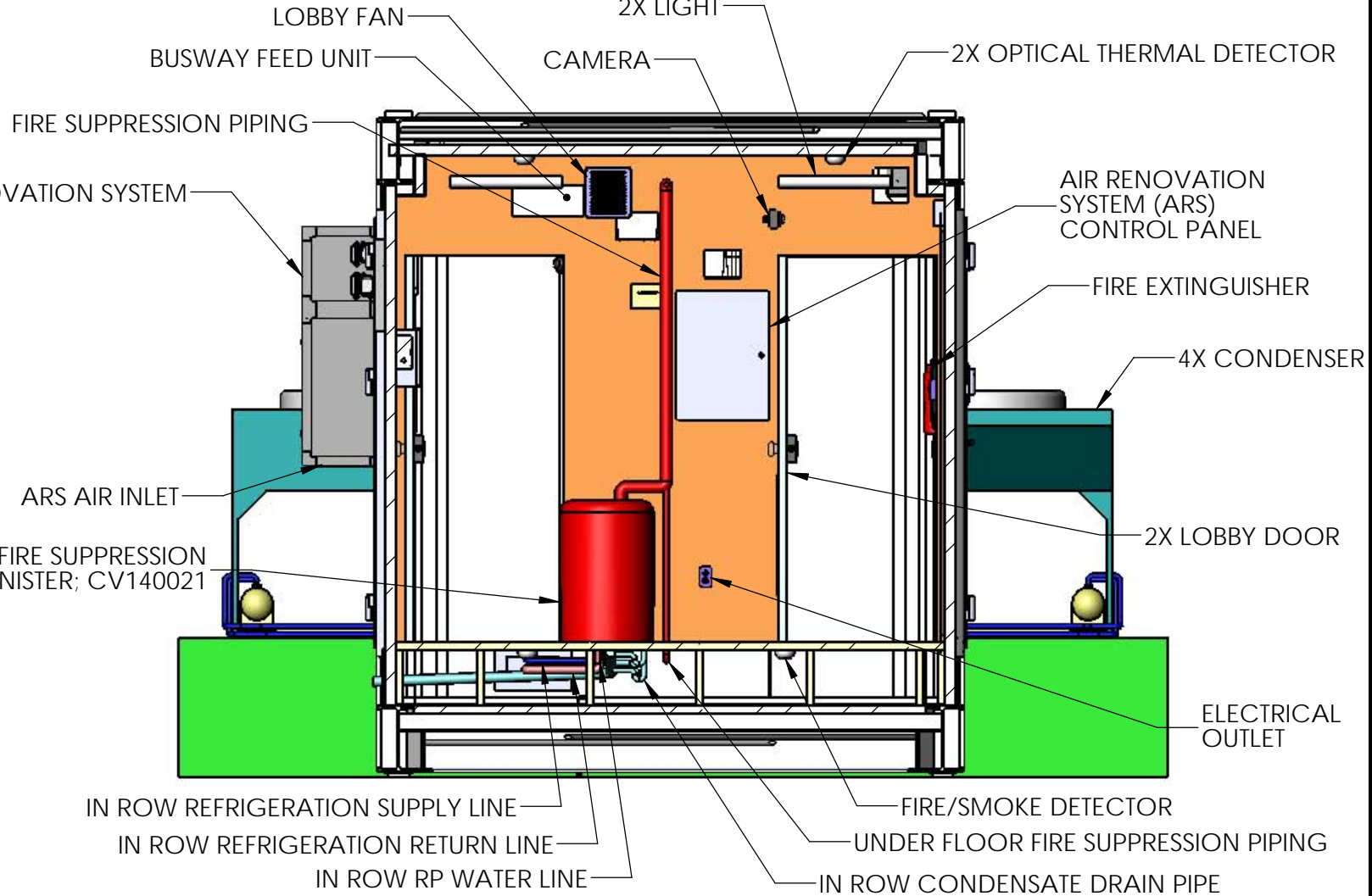
CABLE TRAY

2X CAMERA

FIRE EXTINGUISHER

ELECTRICAL OUTLET

**SECTION F-F**  
**SCALE 1 : 40**  
SEE SHEET 2; ZONE A3



LOBBY FAN

BUSWAY FEED UNIT

FIRE SUPPRESSION PIPING

AIR RENOVATION SYSTEM

ARS AIR INLET

NOVEC FIRE SUPPRESSION  
CANISTER; CV140021

2X LIGHT

CAMERA

2X OPTICAL THERMAL DETECTOR

AIR RENOVATION  
SYSTEM (ARS)  
CONTROL PANEL

FIRE EXTINGUISHER

4X CONDENSER

2X LOBBY DOOR

ELECTRICAL  
OUTLET

IN ROW REFRIGERATION SUPPLY LINE

IN ROW REFRIGERATION RETURN LINE

IN ROW RP WATER LINE

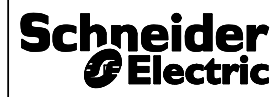
FIRE/SMOKE DETECTOR

UNDER FLOOR FIRE SUPPRESSION PIPING

IN ROW CONDENSATE DRAIN PIPE

**SECTION E-E**  
**SCALE 1 : 35**  
SEE SHEET 2; ZONE B3

THIS DRAWING AND SPECIFICATIONS HEREIN ARE THE PROPERTY OF SCHNEIDER ELECTRIC AND SHALL NOT BE COPIED, REPRODUCED OR USED IN WHOLE OR IN PART, AS THE BASIS FOR THE MANUFACTURE OR SALE OF ITEMS WITHOUT WRITTEN PERMISSION FROM SCHNEIDER ELECTRIC. THIS DRAWING IS BASED UPON LATEST AVAILABLE INFORMATION AND IS SUBJECT TO CHANGE WITHOUT NOTICE.



TITLE:  
**90kW ALL-IN-ONE PRE-FABRICATED IT  
MODULE, BUSWAY, EMEA**

DWG NO.	PFMIEJ090D1E12B		REV	02
ENGINEER:	K SCHALLER	4/3/2014	SIZE	B
DRAWN:	K SCHALLER	4/3/2014		
APPROVED:	K SCHALLER	4/3/2014		

PROJECT: PRE-FAB SOLUTIONS SHEET 5 OF 7

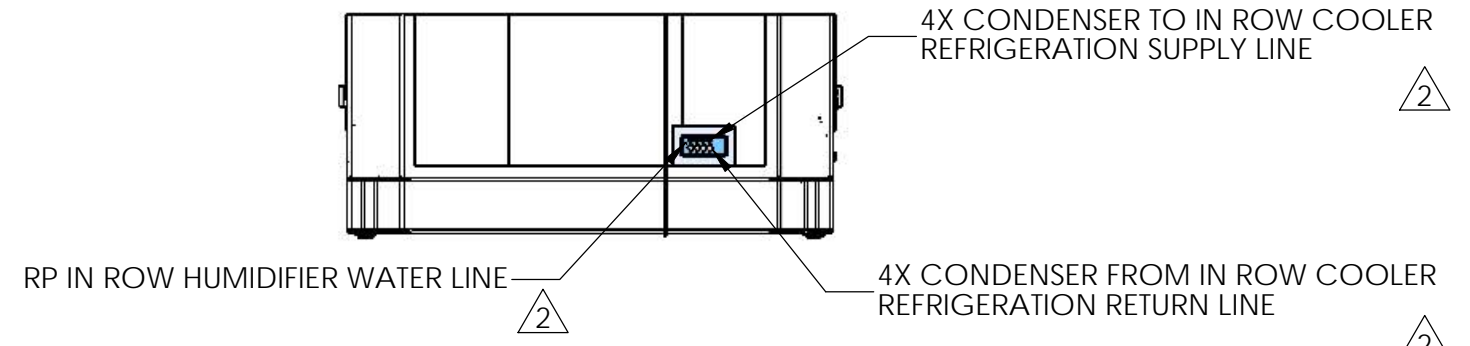
A B C D E F G H

1

1

(4X 1380  
[54.33])

(4X 1910  
[75.20])

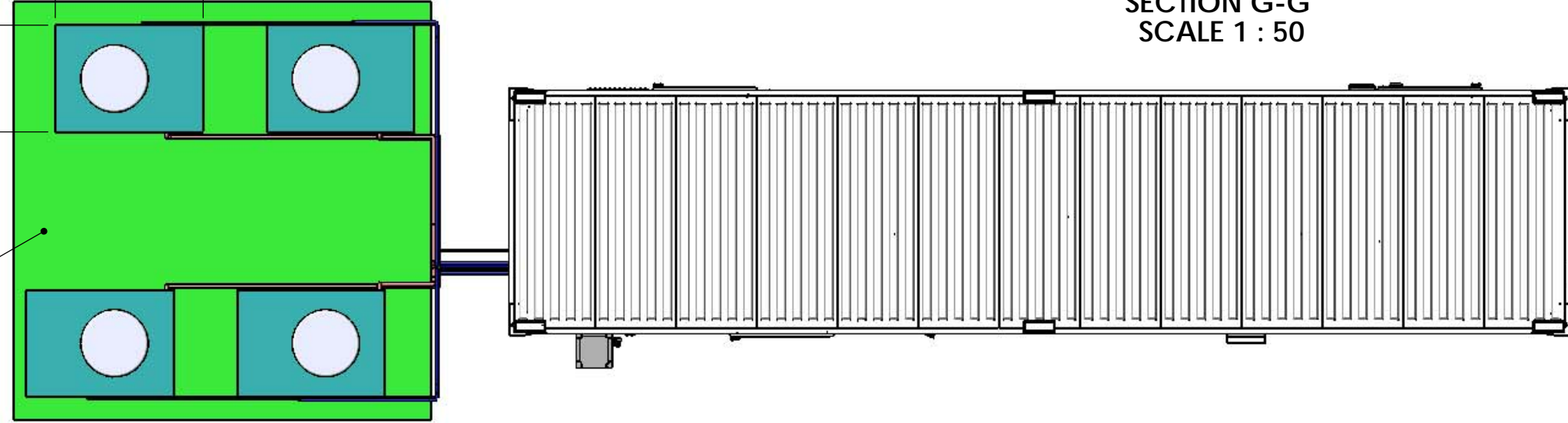


SECTION G-G  
SCALE 1 : 50

2

2

CONDENSER MOUNTING PAD  
(CUSTOMER SUPPLIED)



3

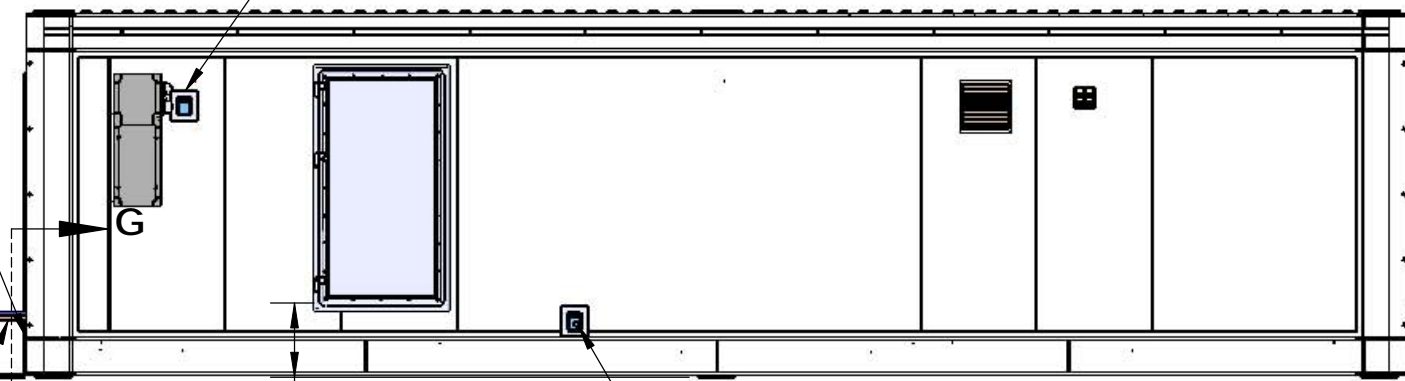
3

IN ROW RP HUMIDIFIER WATER LINE  
(FIELD INSTALLED)

ARS ELECTRICAL CONNECTION

4X CONDENSER  
ACCD75207

(4X 1350  
[53.15])



762  
[30.00]

MUST BE GREATER THAN  
HEIGHT TO IN ROWS

4X CONDENSER POWER CABLE  
(FIELD INSTALLED)

(736  
[28.98]  
HEIGHT TO  
IN ROW)

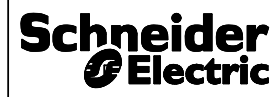
4X CONDENSER SUPPLY REFRIGERATION LINE  
(FIELD INSTALLED)

4X CONDENSER RETURN REFRIGERATION LINE  
(FIELD INSTALLED)

4

4

THIS DRAWING AND SPECIFICATIONS HEREIN ARE THE PROPERTY OF SCHNEIDER ELECTRIC AND SHALL NOT BE COPIED, REPRODUCED OR USED IN WHOLE OR IN PART, AS THE BASIS FOR THE MANUFACTURE OR SALE OF ITEMS WITHOUT WRITTEN PERMISSION FROM SCHNEIDER ELECTRIC. THIS DRAWING IS BASED UPON LATEST AVAILABLE INFORMATION AND IS SUBJECT TO CHANGE WITHOUT NOTICE.



TITLE: 90kW ALL-IN-ONE PRE-FABRICATED IT MODULE, BUSWAY, EMEA

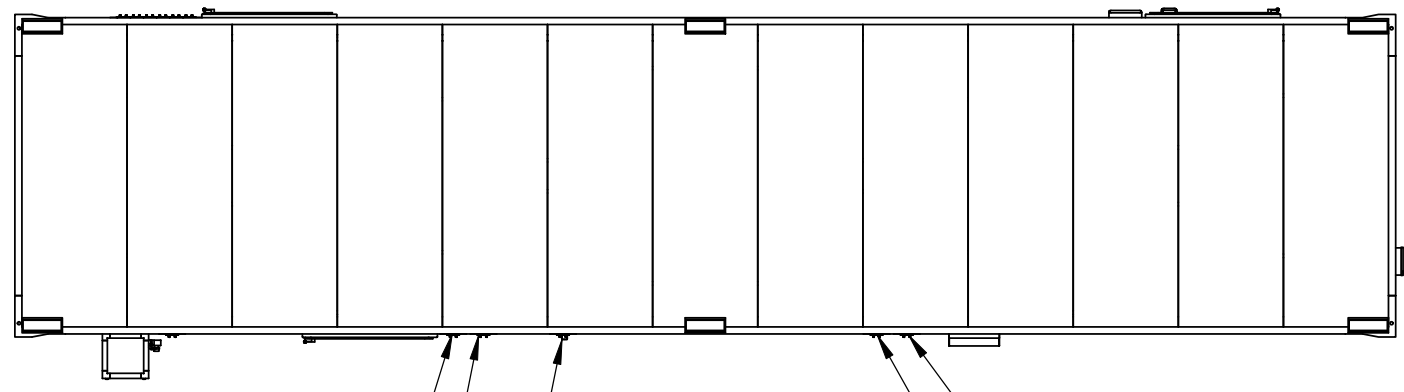
DWG NO.	PFMIEJ090D1E12B	REV	02
ENGINEER:	K SCHALLER	4/3/2014	SIZE B
DRAWN:	K SCHALLER	4/3/2014	
APPROVED:	K SCHALLER	4/3/2014	

PROJECT: PRE-FAB SOLUTIONS SHEET 6 OF 7

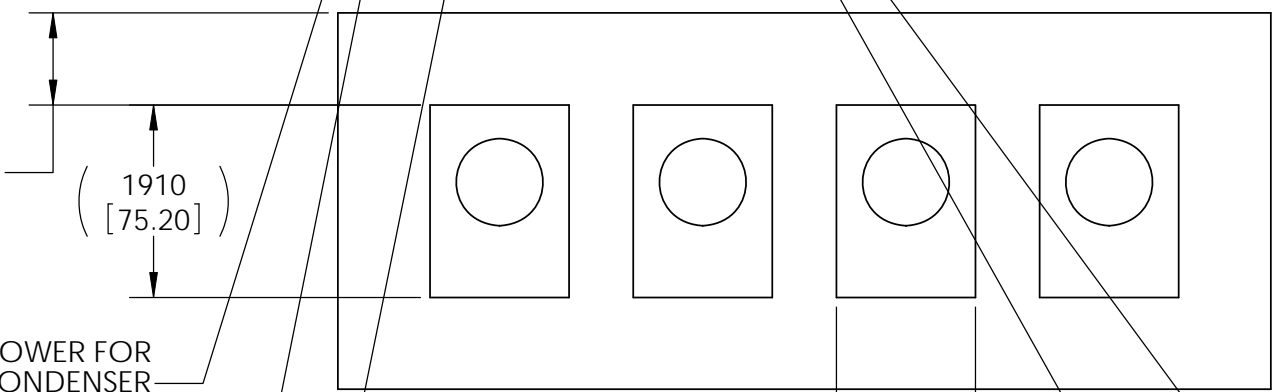
A B C D E F G H

A B C D E F G H

1



914.4  
[36.00]  
MIN SERVICE CLEARANCE  
REQUIRED IN FRONT &  
BACK OF THE CONDENSER



COOLING PIPING & POWER FOR  
4TH IN ROW TO 4TH CONDENSER  
(FIELD INSTALLED)

COOLING PIPING & POWER FOR  
3RD IN ROW TO 3RD CONDENSER  
(FIELD INSTALLED)

IN ROW CONDENSATE DRAIN  
(FIELD INSTALLED)

COOLING PIPING & POWER FOR  
1ST IN ROW TO 1ST CONDENSER  
(FIELD INSTALLED)

COOLING PIPING & POWER FOR  
2ND IN ROW TO 2ND CONDENSER  
(FIELD INSTALLED)

CONDENSER PIPING & WIRING NOT SHOWN

2

2

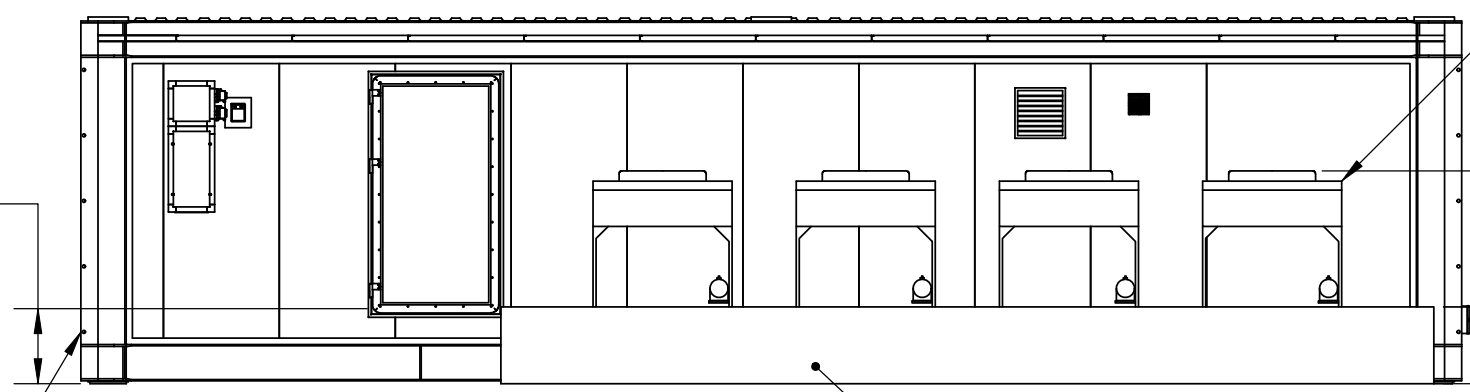
3

3

4

4

736  
[28.98]  
HEIGHT TO  
IN ROWS



4X CONDENSER  
ACCD75207

IN ROW RP HUMIDIFIER WATER LINE  
(FIELD INSTALLED)

CONDENSER MOUNTING PAD  
(CUSTOMER SUPPLIED)

762  
[30.00]  
MUST BE GREATER  
THAN HEIGHT TO IN ROWS

THIS DRAWING AND SPECIFICATIONS HEREIN ARE THE PROPERTY OF SCHNEIDER ELECTRIC AND SHALL NOT BE COPIED, REPRODUCED OR USED IN WHOLE OR IN PART, AS THE BASIS FOR THE MANUFACTURE OR SALE OF ITEMS WITHOUT WRITTEN PERMISSION FROM SCHNEIDER ELECTRIC. THIS DRAWING IS BASED UPON LATEST AVAILABLE INFORMATION AND IS SUBJECT TO CHANGE WITHOUT NOTICE.



TITLE:  
90kW ALL-IN-ONE PRE-FABRICATED IT  
MODULE, BUSWAY, EMEA

DWG NO.	PFMIEJ090D1E12B		REV	02
ENGINEER:	K SCHALLER	4/3/2014	SIZE	B
DRAWN:	K SCHALLER	4/3/2014		
APPROVED:	K SCHALLER	4/3/2014		

PROJECT: PRE-FAB SOLUTIONS SHEET 7 OF 7

A B C D E F G H