

# EcoStruxure™ Machine Expert Twin

A scalable digital twin software suite for  
your entire machine lifecycle



# Quick access to product information

## Get technical information about your product

**References**

**Modicon TM3**  
I/O expansion modules for Modicon controllers  
Analog I/O modules

Number and type of channels	Input range	Output range	Resolution	Input/Output (mA/V)	Reference	Weight (kg)
2 voltage measurement inputs	-15...+10 VDC 0...10 VDC 0...20 mA A, 20 mA	16 bits or 10 bits 4 sign	16 bits or 10 bits 4 sign	0 mA 0 mA 0 mA	TMB3A12H TMB3A12G TMB3A12	0.110 0.256 0.100
4 voltage measurement inputs	-15...+10 VDC 0...10 VDC 0...20 mA A, 20 mA	12 bits or 11 bits 4 sign	12 bits or 11 bits 4 sign	0 mA 0 mA 0 mA	TMB3A24 TMB3A24G TMB3A24	0.110 0.256 0.100
4 voltage measurement or temperature inputs	-15...+10 VDC 0...10 VDC 0...20 mA A, 20 mA RTD: Ni100, Ni200, Pt100, Pt200 0...10 VDC 0...20 mA A, 20 mA	16 bits or 10 bits 4 sign	16 bits or 10 bits 4 sign	0 mA 0 mA 0 mA	TMB3A24 TMB3A24G TMB3A24	0.110 0.256 0.100
4 differential temperature inputs	-15...+10 VDC 0...10 VDC 0...20 mA A, 20 mA Non-isolated	16 bits or 10 bits 4 sign	16 bits or 10 bits 4 sign	0 mA 0 mA 0 mA	TMB3A24 TMB3A24G TMB3A24	0.110 0.256 0.100
8 voltage measurement	-15...+10 VDC	12 bits or 11 bits 4 sign	12 bits or 11 bits 4 sign	0 mA	TMB3A16	0.110

Share Price Global (English)

Life Is On Schneider Electric

Search products, documents & more

My Products My Documents Partner Portal

PRODUCTS SOLUTIONS SERVICES SUPPORT ABOUT US

All products Industrial Automation and Control PLC, PAC and Dedicated Controllers Distributed Input/Output (I/O) Modules Modicon TM3

View all Modicon TM3

**TM3A12H**

Module TM3 - 2 analog inputs high resolution

Show more characteristics >

Related Software >

Add to My Products

Compare

Product Datasheet User guide Catalogue CAD Document

Characteristics Documents and Downloads Technical FAQs Additional Information Dimensions Drawings >>

Main

range of product Modicon TM3

product or component type Analog input module

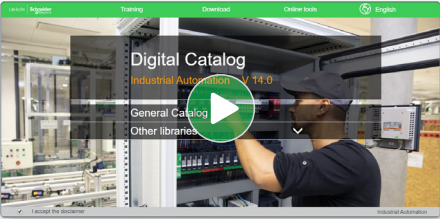
range compatibility Modicon M251

M-Modicon AB5A

Each commercial reference presented in a catalog contains a hyperlink. Click on it to obtain the technical information of the product:

- Characteristics, Dimensions and drawings, Mounting and clearance, Connections and schemas, Performance curves
- Product image, Instruction sheet, User guide, Product certifications, End of life manual

## Find your catalog



- > With just 3 clicks, you can access the Industrial Automation and Control catalogs, in both English and French
- > Consult digital automation catalogs at [Digi-Cat Online](#)

General Catalog

Publications, Datasheets, PLC Lights & Displays

Brochures, Catalogs and Reference Publications

Signaling Devices

HMI (Terminals and Industrial PC)

Sensors & RFID System

Motor Starters and Load Management

Components for Motor Starters

Variable Speed Drives & Soft Starters

Motor Control & Robotics

Interface, Measurement & Control Relays

PLC, PAC & other Controllers

Publications, Datasheets, PLC Lights & Displays

Homeless 300

Product Selector

Online 360°

- Up-to-date catalogs
- Embedded product selectors, 360° pictures
- Optimized search by commercial references

## Select your training



- > Find the right [Training](#) for your needs on our Global website
- > Locate the training center with the selector tool, using this [link](#)

Training and courses

Whether you are a professional, a teacher or a student, Schneider Electric offers a wide range of training solutions to enable you to compete in the world of tomorrow.

Training by domain of expertise

Electrical Installation and Safety

Data Center

Industrial Automation

# General content

## EcoStruxure Machine Expert Twin

A scalable digital twin software suite for your entire machine lifecycle

■ EcoStruxure Machine Presentation .....	2
■ General overview	
□ Design and engineering .....	5
□ Commissioning and operation .....	5
□ Maintenance and services .....	5
■ Machine Expert Twin licenses	
□ EcoStruxure Machine Expert Twin <b>Visu</b> .....	6
□ EcoStruxure Machine Expert Twin <b>Builder</b> .....	6
□ EcoStruxure Machine Expert Twin <b>Developer</b> .....	6
□ EcoStruxure Machine Expert Twin <b>RemoteViewer</b> .....	7
■ <b>Selection guide</b> .....	8 and 9
■ Scalable suite from single product to complete production line .....	10
■ References .....	11
■ Product reference index .....	13

To be competitive in today's digital era, machine builders must be innovative. Smart machines, those that are better connected, more flexible, more efficient, and safe, are enabling machine builders to innovate in ways never before possible.

EcoStruxure, Schneider Electric's open, IoT-enabled architecture and platform, offers powerful solutions for the digital era. As part of this, EcoStruxure Machine brings powerful opportunities for machine builders and OEMs, empowering them to offer smart machines and compete in the new, digital era.

EcoStruxure Machine brings together key technologies for product connectivity and edge control on premises, and cloud technologies to provide analytics and digital services. EcoStruxure Machine helps you bring more innovation and added value to your customers throughout the entire machine life cycle.

**Innovation at Every Level for Machines is full systems across three layers:**

- Connected products  
Our connected products for measuring, actuating, device level monitoring, and control adhere to open standards to provide unmatched integration opportunities and flexibility
- Edge Control  
We are IIoT-ready with a proven set of tested and validated reference architectures that enable the design of end-to-end open, connected, and interoperable systems based on industry standards. Ethernet and OPC UA facilitates IT/OT convergence meaning machine builders reap benefits from web interfaces and cloud.

- Apps, Analytics & Services  
Seamless integration of machines to the IT layer allows the collection and aggregation of data ready for analysis – for machine builders and end users alike this means increased uptime and the ability to find information faster for more efficient operations and maintenance.

**These levels are completely integrated from shop floor to top floor. And we have cloud offers and end-to-end cybersecurity wrapped around.**

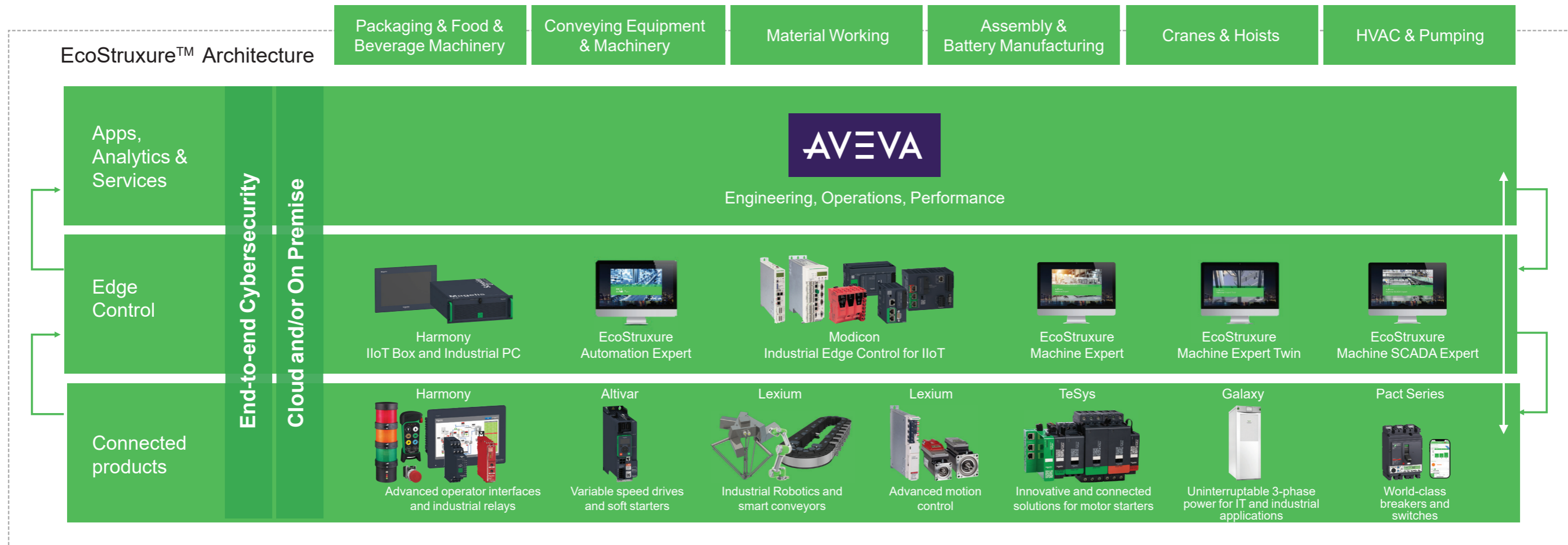
EcoStruxure Machine makes it easier for OEMs/ machine builders to offer their customers smarter machines. The advent of smart machines is driven by the changing needs of end users:

- Evolving workforce
- Reducing costs
- Dynamic markets
- Shorter life cycles
- Prioritizing functional safety and cybersecurity

EcoStruxure Machine provides one solution for the whole machine life cycle:

- With Smart Design & Engineering the time to market is reduced by up to 30% using our automated engineering and the simulation capabilities
- During Commissioning & Operation of the machine, resources such as energy, material and loss can be improved, and with seamless integration to the IT world efficiency can be improved by up to 40%
- Smart Maintenance & Services reduces the time for corrective actions up to 50%

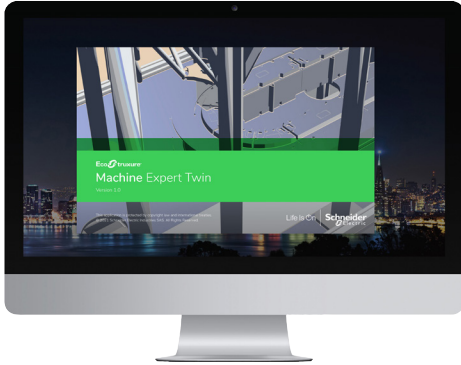
# EcoStruxure™ Machine



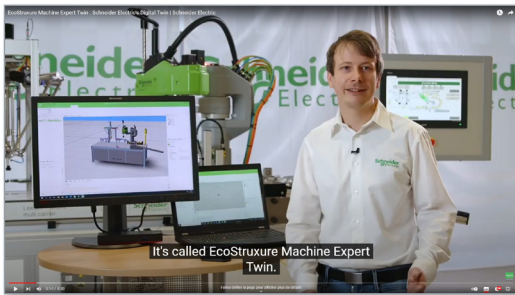
\* The Schneider Electric industrial software business and AVEVA have merged to trade as AVEVA Group plc, a UK listed company. The Schneider Electric and Life is On trademarks are owned by Schneider Electric and are being licensed to AVEVA by Schneider Electric.

# EcoStruxure Machine Expert Twin

A scalable digital twin software suite for your entire machine lifecycle

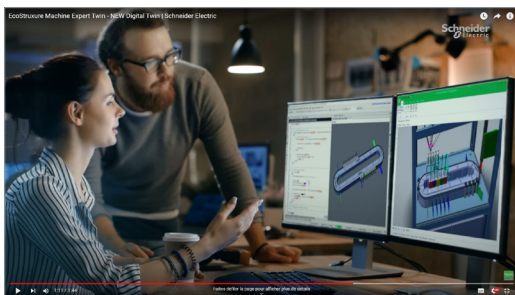


EcoStruxure Machine Expert Twin



[EcoStruxure Machine Expert Twin - General introduction](#)

Click to open video (4 min 30s)



[EcoStruxure Machine Expert Twin - Promotional video](#)

Click to open video (1 min 44s)

EcoStruxure Machine Expert Twin is a software suite to **create digital models of real machines** to do the **virtual design, virtual engineering, and virtual commissioning** for agile development before building the physical machine – Thus **enabling parallel engineering** of mechanical, electrical and controls work assignments.

- > Machine Expert Twin offers an intuitive environment, with drag and drop of mechatronic components, Virtual Reality / Augmented Reality interfaces and ready to use catalog objects. The open programming environment in C# allowing add on and extensions with a multitude of advanced models and seamless integration into EcoStruxure Machine Expert (1) as well as adaptation to the customer data sources, workflow and processes.

## EcoStruxure Machine Expert Twin A scalable digital twin software suite for your entire machine lifecycle



### SALES, CONCEPT & DESIGN

- > Sales & Marketing
- > Concept design
- > Prototyping



### MANUFACTURING

- > Mechanical, Electrical & controls engineering
- > Commissioning



### OPERATION

- > Service
- > Operator training
- > Improve & upgrade

## Transform your sales and design ideas, using Digital Twin Models

### Save up to 20-50% time to market and save up to 10-20% on quality costs

- > Create convincing sales animations
- > Validate and improve design ideas
- > Reduce risk and quality costs
- > Gain competitive advantages due to reduced time to market

## Revolutionize your test strategy, using virtual commissioning

### Save up to 60% Commissioning time and increase software quality

- > Reduce the onsite commission time to the absolute minimum
- > Perform system integration test fully virtual
- > Increase software quality with virtual factory acceptance tests
- > Speed up engineering and commissioning

## Enable new revenue streams over complete machine lifetime

### Increase your sale and profit from new business opportunities

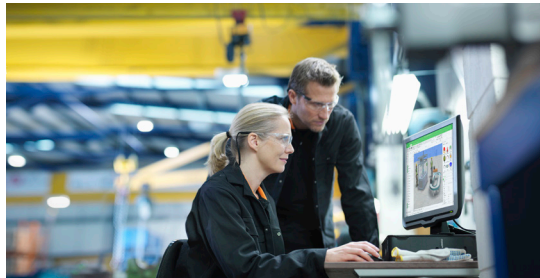
- > Offer after-sale services, based on Digital Twin technology, such as the Remote Viewer
- > Offer operator training upfront virtually
- > Validate and improve changes virtually with no machine downtime
- > Reduce downtime of the machine with remote operator guidance and joint trouble-shooting

(1) Consult [EcoStruxure Machine Expert digital](#) on our website.

# EcoStruxure Machine Expert Twin

A scalable digital twin software suite for your entire machine lifecycle

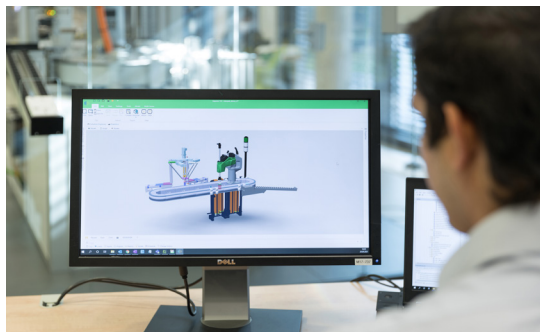
## Design and engineering



### Visualisation integrated in Machine Expert

- > Smart design
  - Efficient mechanical, electrical and software design of Schneider Electric robots and multi carrier systems

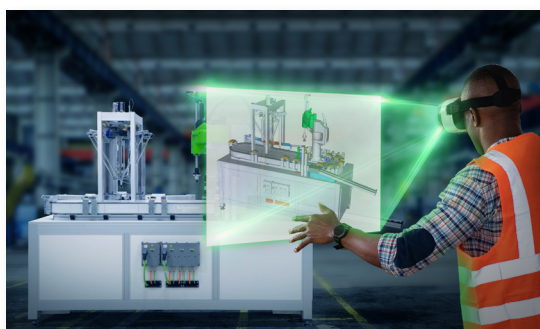
## Commissioning and operation



### Machine Expert Twin Builder / Machine Expert Twin Developer

- > Smart engineering
  - Import 3D models of the machine and emulate them
- > Smart commissioning
  - Orchestrate several modules to a complete machine and do the virtual commissioning
- > Smart operation
  - Simulate modifications of operations, before bringing them life to the machine

## Maintenance and services

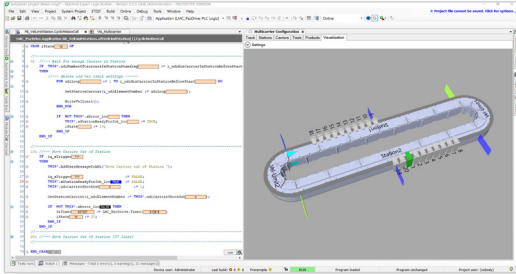


### Machine Expert Twin RemoteViewer

- > Smart maintenance
  - Digital twin provides real time data on-premise, machine information and video stream to enable remote expertise
- > Smart services
  - Training remotely by leveraging digital twin
  - Historical digital twin Information
  - Revenue channel for machine lifetime

# EcoStruxure Machine Expert Twin

A scalable digital twin software suite for your entire machine lifecycle



Machine Expert Visu

## Machine Expert Twin licenses

### EcoStruxure Machine Expert Visu

- Emulation and 3D visualization integrated in EcoStruxure Machine Expert.
- Enables test of the PLC application code of single mechatronic object like Lexium MC12 multi carrier or Lexium P4 delta robot.
- 3D simulation model automatically generated from the PLC (IEC) programming environment and integrated configurator.
- Easy to use for controls testing, used by application engineers.
- Reuse autogenerated 3D model and components in the Machine Expert Twin suite: Enables controls testing a virtual commissioning of the entire machine.

### Benefits

- Enables virtual tests directly from IEC (PLC) programming environment
- Controls testing without simulation experts
- Reuse autogenerated 3D model in Machine Expert Twin-Suite for enhanced use and system tests

### Important Features

- Seamlessly embedded in Machine Expert IEC programming environment
- Autogenerate predefined Schneider Electric mechatronic models, e.g. Lexium MC12 multi carrier

### EcoStruxure Machine Expert Twin Builder

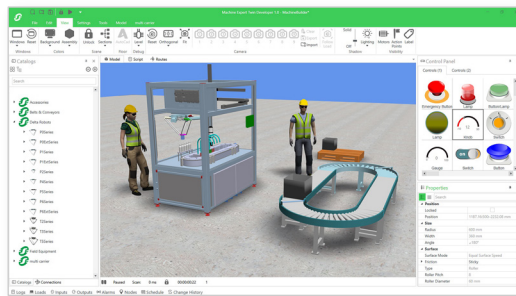
- The **Builder** license for Machine Expert Twin suite: Enables emulation and controls testing of a machine with PLC controller in the loop.
- Create a 3D digital twin of your complete machine, using drag & drop from predefined catalogs and ready to use mechatronic components.
- Import and reuse customized mechatronic components, created from the Machine Expert Twin **Developer**.
- Emulate the complete machine with PLC(s) in the loop. Combine both Schneider Electric and 3<sup>rd</sup> party controls and automation systems.
- Stream 3D digital twin model to RemoteViewer (users need the RemoteViewer add-on license to use this feature).
- Create and manipulate full control of loads in the scene through PLC programming.
- Test your PLC code in a perfect virtual environment without any physics interference.
- Log data in a separate file and replay the scene at any time.
- Enhanced physics feature to accurately simulate the dynamics of loads.

### Benefits

- "Proof of concept" before construction
- Controls testing before deployment
- Virtual commissioning by exposing the 3D model to different scenarios
- IT / OT (1) performance and integration test
- Automatic generation of the Digital Twin
- Full control of Digital Twin behaviour through PLC programming

### Important Features

- Simple "drag & drop" components
- Seamless integration with a Digital Twin Communication Library to Machine Expert
- Scalable solution from standalone machines to complete lines

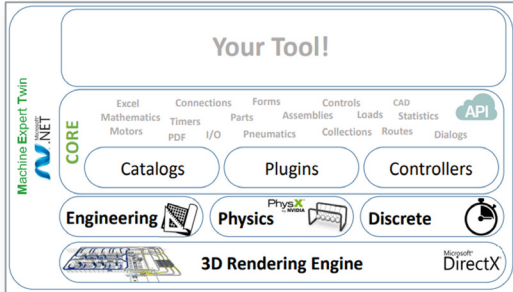


Machine Expert Twin Builder

(1) IT / OT: Information Technology / Operation Technology.

# EcoStruxure Machine Expert Twin

A scalable digital twin software suite for your entire machine lifecycle



Machine Expert Twin **Developer**



C# programming language



Machine Expert Twin **RemoteViewer**

## Machine Expert Twin licenses

### EcoStruxure Machine Expert Twin Developer

- The **Developer** license for Machine Expert Twin suite: Enables access to the Builder features set and underlying .net framework.
- Open software suite to develop customized – simulation & emulation components and catalogs.
- Customized developments handed over and reused as “drag & drop” components in the **Builder**.
- Develop customized software plugins, communication interfaces etc. and adapt to the customer’s workflow, processes, and data sources.
- Powerful API’s for seamless interface to the customers existing tool-chain.

#### Benefits

- Microsoft.NET /C# software framework
- Customizable from Visual Studio
- Adapts to the customer workflow and data sources
- Supports both emulation and simulation

#### Important Features

- Open architecture for customization
- Develop 3D digital components & catalogs
- Develop customized tools and plugins

### EcoStruxure Machine Expert Twin RemoteViewer

- The **RemoteViewer** license for EcoStruxure Machine Expert Twin provides on premise execution of a digital twin scene, parallel to the real machine.
- Use the RemoteViewer to connect securely to a running instance of Machine Expert Twin RemoteViewer and visualize the machine. The Web API supports different external clients, such as PCs, mobile devices, tablets, or even AR/VR technology.
- 3D digital twin model enables better condition for remote maintenance, remote assistance and remote support.
- Enables new potentials of service business by embedding it in Machine Advisor Edge.

#### Benefits

- Access your digital twin from anywhere at any time
- Create new business models for service
- Enables new possibilities for remote maintenance / expertise
- Get detailed insight in crucial areas and bottlenecks

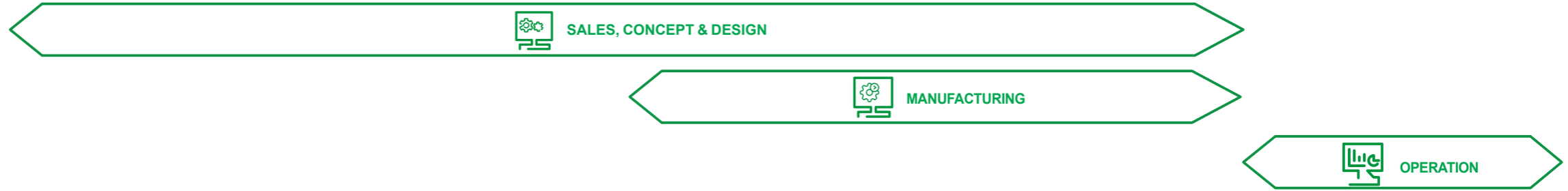
#### Important Features

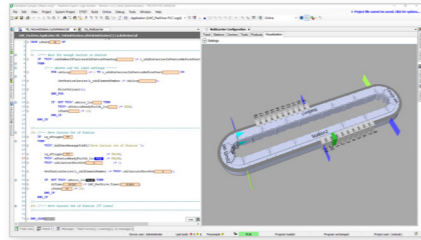

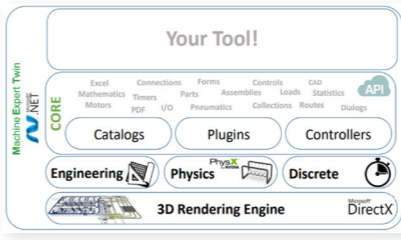

- Real time 3D model of the machine
- Works in harmony with the running machines on-premise
- Monitors and taps data without interfering with running operation



# EcoStruxure Machine Expert Twin

A scalable digital twin software suite for your entire machine lifecycle



		Visu	Builder	Developer	RemoteViewer
<b>EcoStruxure Machine Expert Twin Suite – Overview</b>					
					
<b>License type</b>		EcoStruxure Machine Expert <b>Visu</b>	EcoStruxure Machine Expert Twin <b>Builder</b>	EcoStruxure Machine Expert Twin <b>Developer</b>	EcoStruxure Machine Expert Twin <b>RemoteViewer</b>
<b>Overview</b>		Integrated console mode	Windows standalone application		
<b>Description</b>		3D emulation and controls testing, integrated in EcoStruxure Machine Expert.	Create a 3D digital twin of your complete machine, using drag & drop of "Ready to use" objects.	Access.net/C# framework and develop customized components, catalogs, plugins, tools, interfaces for every need.	Run digital twin models on premise with the operative machine and connect from anywhere at anytime, fully cyber secure, to transmit the 3D model-based visualization of the machine state.
<b>Core functions</b>		<p><b>Visu</b> is a "headless" version of Machine Expert Twin software, integrated into Machine Expert IEC development tool. Digital twin models are automatically created inside Machine Expert, thus allowing to visualize 3D models for testing purposes.</p> <p>Single controller and visualizing a single object (one Lexium MC12 loop).</p>	<p><b>Builder</b> is a license type for Machine Expert Twin, allowing to build digital twin models from pre-developed mechatronic components.</p> <p>Unlimited controllers and unlimited objects (Limitation in accordance to license plan).</p>	<p><b>Developer</b> is a license type for machine Expert Twin, with same properties as the <b>Builder</b> license. Furthermore <b>Developer</b> license allows to customize the entire suite, developing plugins, catalogs, etc.</p> <p>Unlimited controllers and unlimited objects (Limitation in accordance to license plan).</p>	<p><b>RemoteViewer</b> provides a web-based interface to connect from remote with a device like a tablet or smartphone. This enables visualizing the machine at any place to enable remote training and maintenance support.</p> <p>Unlimited controllers and unlimited objects (Limitation in accordance to license plan)</p>
<b>Controllers, Restrictions and limitations</b>		<p>Schneider Electric products:</p> <ul style="list-style-type: none"> <li>- Lexium MC12 multi carrier</li> <li>- Lexium P, T (Delta robots)</li> <li>- Cartesian Robots : Lexium MAX, Lexium TAS, Lexium PAS, and Lexium CAS (supported in a future launch).</li> </ul>	<p>Schneider Electric products:</p> <ul style="list-style-type: none"> <li>- Lexium MC12 multi carrier</li> <li>- Lexium P, T (Delta robots)</li> </ul> <p>Generic Belt &amp; Conveyors (Use customized catalogs created in the Developer)</p>	<p>Schneider Electric products:</p> <ul style="list-style-type: none"> <li>- Lexium MC12 multi carrier</li> <li>- Lexium P, T (Delta robots)</li> </ul> <p>Generic Belt &amp; Conveyors</p>	N/A
<b>Controller Library</b>		<ul style="list-style-type: none"> <li>- PacDrive 3 LMC Eco/ Pro/Pro2 motion controllers</li> <li>- Modicon M262 controller</li> </ul>	<ul style="list-style-type: none"> <li>- Schneider Electric controllers supported</li> <li>- Most common 3<sup>rd</sup> party (Siemens, Beckhoff, etc.)</li> </ul>	<ul style="list-style-type: none"> <li>- Schneider Electric controllers supported</li> <li>- Most common 3<sup>rd</sup> party (Siemens, Beckhoff, etc.)</li> </ul>	<ul style="list-style-type: none"> <li>- Schneider Electric controllers supported</li> <li>- Most common 3<sup>rd</sup> party (Siemens, Beckhoff, etc.)</li> </ul>
<b>Connection type</b>		OPC-UA	<ul style="list-style-type: none"> <li>- OPC UA</li> <li>- Modbus/TCP</li> <li>- TCP/UDP</li> <li>- RFC1006</li> <li>- Beckhoff ADS</li> <li>- Siemens S7 communication</li> <li>- Siemens Fetch/Write</li> </ul> <p>(Use customized communication interfaces created in the Developer)</p>	<ul style="list-style-type: none"> <li>- OPC UA</li> <li>- Modbus TCP</li> <li>- TCP/UDP</li> <li>- RFC1006</li> <li>- Beckhoff ADS</li> <li>- Siemens S7 communication</li> <li>- Siemens Fetch/Write</li> <li>- Develop customized communication plug-ins</li> </ul>	<ul style="list-style-type: none"> <li>- OPC UA</li> <li>- Modbus/TCP</li> <li>- TCP/UDP</li> <li>- RFC1006</li> <li>- Beckhoff ADS</li> <li>- Siemens S7 communication</li> <li>- Siemens Fetch/Write</li> </ul> <p>(Use customized communication interfaces created in the Developer)</p>
<b>Virtual commissioning</b>		Unit testing (one object)	Yes	N/A	N/A
<b>Use components from catalog</b>		Yes (Physics)	Yes (Physics)	Yes	N/A
<b>Import catalogs</b>		No	Yes	Yes	N/A
<b>Develop own components</b>		No	No	Yes (usable with Builder)	N/A
<b>Design Configuration</b>		No	No	Yes	N/A
<b>Sales Animation</b>		No	Yes	Yes	N/A
<b>3D Export</b>		No	Yes	Yes	N/A
<b>Ordering reference</b>		-	See page 11	See page 11	See page 11

# EcoStruxure Machine Expert Twin

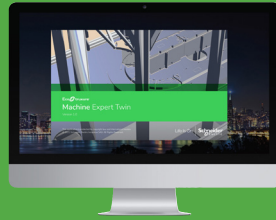
A scalable digital twin software suite for your entire machine lifecycle

Ecostruxure Machine Expert Twin: Scalable suite from single product to complete production line



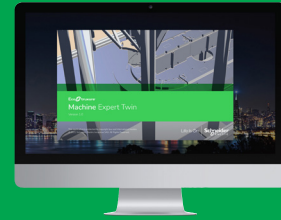
EcoStruxure Machine Expert (1)

Single product and controller



EcoStruxure Machine Expert Twin – Suite

Multiple products and 3<sup>rd</sup> party interfaces



EcoStruxure Machine Expert RemoteViewer

On-premise linked to Machine control + web-based Remote Viewer

### Visu (Motion)

- Emulation / Visualization (with Lexium MC12 multi carrier only – Part of Machine Expert)
- ⇒ Emulation and 3D visualization integrated in EcoStruxure Machine Expert.
- ⇒ Test PLC application code of single mechatronic object like Lexium MC12 multi carrier or Lexium P4 Delta robots.

### Builder (Emulation)

- Emulation / Visualization
- ⇒ Enables emulation and controls testing of a machine with PLC controller in the loop.
- ⇒ Use drag & drop of "ready to use" Schneider Electric components and generic objects.
- ⇒ Emulate the complete machine with PLC(s) in the loop. Combine both Schneider Electric and 3<sup>rd</sup> party controls and automation systems.

### RemoteViewer Digital Twin

- Digital Twin on-premise
- ⇒ Provides on premise execution of a digital twin scene, parallel to the real machine.
- ⇒ Connect securely to Machine Expert Twin Server and stream the 3D model-based visualization of the machine.
- ⇒ The Web API supports different external clients, like PCs, mobile devices, tablets, or even AR/VR technology.
- ⇒ 3D digital twin model enables better condition for remote maintenance, remote assistance, and remote support.
- ⇒ Enables new potentials of service business.

### Developer (Customization & development)

- Emulation / Visualization
- Simulation / Animation
- ⇒ Access the entire Machine Expert Twin suite and underlying .net framework.
- ⇒ Open software suite to develop customized – simulation & emulation components, catalogs, plugins, tools, interfaces, etc.
- ⇒ Open software architecture adapts to our customer's workflow, processes and data source.

(1) Consult [EcoStruxure Machine Expert](#) on our website.

# EcoStruxure Machine Expert Twin

A scalable digital twin software suite for your entire machine lifecycle



EcoStruxure Machine Expert Twin

## EcoStruxure Machine Expert Twin references

- > EcoStruxure Machine Expert Twin is available in English.
- > Documentation is supplied in digital format: Complete online help with complementary documentation in online version:  
<https://product-help.schneider-electric.com/Machine%20Expert%20Twin/LandingPages/en/index.html>
- > System requirements (minimum PC requirements):
  - CPU – Quad Core CPU with 8MB Cache and DDR3
  - Graphics card – Nvidia Gt 710 2GDH3 or equivalent
  - Memory – 8GB Ram
  - Disk Space – 900MB
  - Operating System – Windows 10
  - Administrative user rights on PC/operation system is preferred. The user should be familiar with normal PC and Windows functionality.
- > References are digital, available from the cloud.
- > Select (click on [reference](#) below), download and activate your license, and register it on Schneider Electric country website for usage tracking, computer replacement, ...

Designation	Subscription base	Number of licenses	Reference (1)	
			Node-locked (2)	Floating with borrowing (2)
<b>Machine Expert Twin Builder</b>	Machine (50 objects)	Single (1)	<a href="#">ESETBSCZSSXAZZ</a>	<a href="#">ESETBSCZSSXBZZ</a>
		Team (10)	<a href="#">ESETBSCZSTXAZZ</a>	<a href="#">ESETBSCZSTXBZZ</a>
		Site (100)	<a href="#">ESETBSCZSEXAZZ</a>	<a href="#">ESETBSCZSEXBZZ</a>
	Automation (100 objects)	Single (1)	<a href="#">ESETBSCZMSXAZZ</a>	<a href="#">ESETBSCZMSXBZZ</a>
		Team (10)	<a href="#">ESETBSCZMTXAZZ</a>	<a href="#">ESETBSCZMTXBZZ</a>
		Site (100)	<a href="#">ESETBSCZMEXAZZ</a>	<a href="#">ESETBSCZMEXBZZ</a>
	Enterprise (unlimited)	Single (1)	<a href="#">ESETBSCZLSXAZZ</a>	<a href="#">ESETBSCZLSXBZZ</a>
		Team (10)	<a href="#">ESETBSCZLTAXAZZ</a>	<a href="#">ESETBSCZLTXBZZ</a>
	<b>Machine Expert Twin Developer</b>	Automation (100 objects)	Single (1)	<a href="#">ESETDSCZMSXAZZ</a>
Team (10)			<a href="#">ESETDSCZMTXAZZ</a>	<a href="#">ESETDSCZMTXBZZ</a>
Automation - University (100 objects)		Team (10)	–	<a href="#">ESETSLEZMTXBZZ</a>
Enterprise (unlimited)		Single (1)	<a href="#">ESETDSCZLSXAZZ</a>	<a href="#">ESETDSCZLSXBZZ</a>
		Team (10)	<a href="#">ESETDSCZLTAXAZZ</a>	<a href="#">ESETDSCZLTXBZZ</a>
<b>Machine Expert Twin RemoteViewer</b>	Machine (50 objects)	Single (1)	<a href="#">ESETSSCZSSXAZZ</a>	–
	Automation (100 objects)	Single (1)	<a href="#">ESETSSCZMSXAZZ</a>	–
	Enterprise (unlimited objects)	Single (1)	<a href="#">ESETSSCZLSXAZZ</a>	–

Designation	Perpetual	Number of licenses	Reference (1)	
			Node-locked (2)	Floating with borrowing (2)
<b>Machine Expert Twin Builder</b>	Machine (50 objects)	Single (1)	–	<a href="#">ESETBPCZSSPBZZ</a>
	Automation (100 objects)	Single (1)	–	<a href="#">ESETBPCZMSPBZZ</a>
	Enterprise (unlimited objects)	Single (1)	–	<a href="#">ESETBPCZLSPBZZ</a>
<b>Machine Expert Twin Developer</b>	Automation (100 objects)	Single (1)	–	<a href="#">ESETDPCZMSPBZZ</a>
	Automation - University (100 objects)	Team (10)	–	<a href="#">ESETGLEZMTPBZZ</a>
	Enterprise (unlimited objects)	Single (1)	–	<a href="#">ESETDPCZLSPBZZ</a>
<b>Machine Expert Twin RemoteViewer</b>	Machine (50 objects)	Single (1)	<a href="#">ESETSPCZSSPAZZ</a>	–
	Automation (100 objects)	Single (1)	<a href="#">ESETSPCZMSPAZZ</a>	–
	Enterprise (unlimited objects)	Single (1)	<a href="#">ESETSPCZLSPAZZ</a>	–

# EcoStruxure Machine Expert Twin

A scalable digital twin software suite for your entire machine lifecycle

EcoStruxure Machine Expert Twin references				
Designation	Test license - 3 months	Number of licenses	Reference (1)	
			Node-locked (2)	Floating with borrowing (2)
Machine Expert Twin <b>Developer</b>	Automation (100 objects)	Single (1)	<a href="#">ESETDSCZMSRAZZ</a>	-

Ecostruxure Machine Expert Twin Logistics and Warehouse				
Designation	Subscription base	Number of licenses	Reference (1)	
			Node-locked (2)	Floating with borrowing (2)
Machine Expert Twin Logistics and Warehouse <b>Builder</b>	Enterprise (unlimited objects)	Single (1)	-	<a href="#">ESETLWBSLSXBZZ</a>
Machine Expert Twin Logistics and Warehouse <b>Developer</b>			-	<a href="#">ESETLWDSLSXBZZ</a>
Machine Expert Twin Logistics and Warehouse <b>Commissioner</b>			-	<a href="#">ESETLWCSLSXBZZ</a>

(1) For the commercial references listed here, please consult your Country front office for the purchase.

(2) Node-locked license is a license that is locked to a single computer.

Floating license is a license that is hosted on a license server. Any computer can check out the license and use it, then check it back in when done and allow another computer to use it. When a user quits an application, all licenses used during that session are returned to the pool of available licenses.

E	
<a href="#">ESETBPCZLSPBZZ</a>	11
<a href="#">ESETBPCZMSPBZZ</a>	11
<a href="#">ESETBPCZSSPBZZ</a>	11
<a href="#">ESETBSCZLSXAZZ</a>	11
<a href="#">ESETBSCZLSXBZZ</a>	11
<a href="#">ESETBSCZLTxAZZ</a>	11
<a href="#">ESETBSCZLTxBZZ</a>	11
<a href="#">ESETBSCZMEXAZZ</a>	11
<a href="#">ESETBSCZMEXBZZ</a>	11
<a href="#">ESETBSCZMSXAZZ</a>	11
<a href="#">ESETBSCZMSXBZZ</a>	11
<a href="#">ESETBSCZMTxAZZ</a>	11
<a href="#">ESETBSCZMTxBZZ</a>	11
<a href="#">ESETBSCZSEXAZZ</a>	11
<a href="#">ESETBSCZSEXBZZ</a>	11
<a href="#">ESETBSCZSSXAZZ</a>	11
<a href="#">ESETBSCZSSXBZZ</a>	11
<a href="#">ESETBSCZSTxAZZ</a>	11
<a href="#">ESETBSCZSTxBZZ</a>	11
<a href="#">ESETDPCZLSPBZZ</a>	11
<a href="#">ESETDPCZMSPBZZ</a>	11
<a href="#">ESETDSCZLSXAZZ</a>	11
<a href="#">ESETDSCZLSXBZZ</a>	11
<a href="#">ESETDSCZLTxAZZ</a>	11
<a href="#">ESETDSCZLTxBZZ</a>	11
<a href="#">ESETDSCZMSRAZZ</a>	12
<a href="#">ESETDSCZMSXAZZ</a>	11
<a href="#">ESETDSCZMSXBZZ</a>	11
<a href="#">ESETDSCZMTxAZZ</a>	11
<a href="#">ESETDSCZMTxBZZ</a>	11
<a href="#">ESETGLEZMTPBZZ</a>	11
<a href="#">ESETLWBSLSXBZZ</a>	12
<a href="#">ESETLWCSLSXBZZ</a>	12
<a href="#">ESETLWDSLSXBZZ</a>	12
<a href="#">ESETSLEZMTxBZZ</a>	11
<a href="#">ESETSPCZLSPAZZ</a>	11
<a href="#">ESETSPCZMSPAZZ</a>	11
<a href="#">ESETSPCZSSPAZZ</a>	11
<a href="#">ESETSSCZLSXAZZ</a>	11
<a href="#">ESETSSCZMSXAZZ</a>	11
<a href="#">ESETSSCZSSXAZZ</a>	11

# mySchneider, your personalized digital experience

Access an all-in-one customized online experience and benefit from tailored business services, resources, and tools to efficiently support your business operations.

- **Efficiency:** In just a few clicks, find all the information and support you need to get the job done.
- **Simplicity:** Use a single login to access all business services, in one place, available 24/7. You no longer need to log in to multiple platforms.
- **Personalization:** Benefit from content, tools, and business services tailored to your activity, and customize your landing page based on your preferences.

## Watch the How-to Videos



### Order management

- > [Select Products and Add to Cart](#)
- > [Check for Products' Price and Availability](#)
- > [Order Products with Generic Commercial References](#)



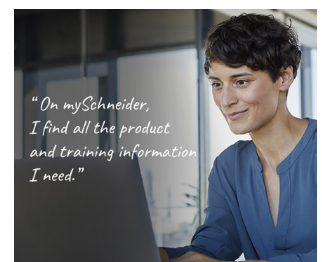
### Product information

- > [Find a Product Data Sheet and Related Documents](#)
- > [Select Products and Add to Cart](#)
- > [Stay Up to Date on the Status of My Products](#)



### Support

- > [Get Quicker Answers Thanks to Online Support](#)



### Training

- > [Access Trainings Dedicated to My Activity](#)

*"On mySchneider, I find all the product and training information I need."*

[Create your account](#)

Life Is On

**Schneider**  
Electric

Life Is On



Learn more about our products at  
[www.se.com](http://www.se.com)

The information provided in this documentation contains general descriptions and/or technical characteristics of the performance of the products contained herein. This documentation is not intended as a substitute for and is not to be used for determining suitability or reliability of these products for specific user applications. It is the duty of any such user or integrator to perform the appropriate and complete risk analysis, evaluation and testing of the products with respect to the relevant specific application or use thereof. Neither Schneider Electric nor any of its affiliates or subsidiaries shall be responsible or liable for misuse of the information contained herein.

Design: Schneider Electric  
Photos: Schneider Electric

**Schneider Electric Industries SAS**

Head Office  
35, rue Joseph Monier - CS 30323  
F-92500 Rueil-Malmaison Cedex  
France

DIA3ED2211202EN  
January 2024 - V2.0