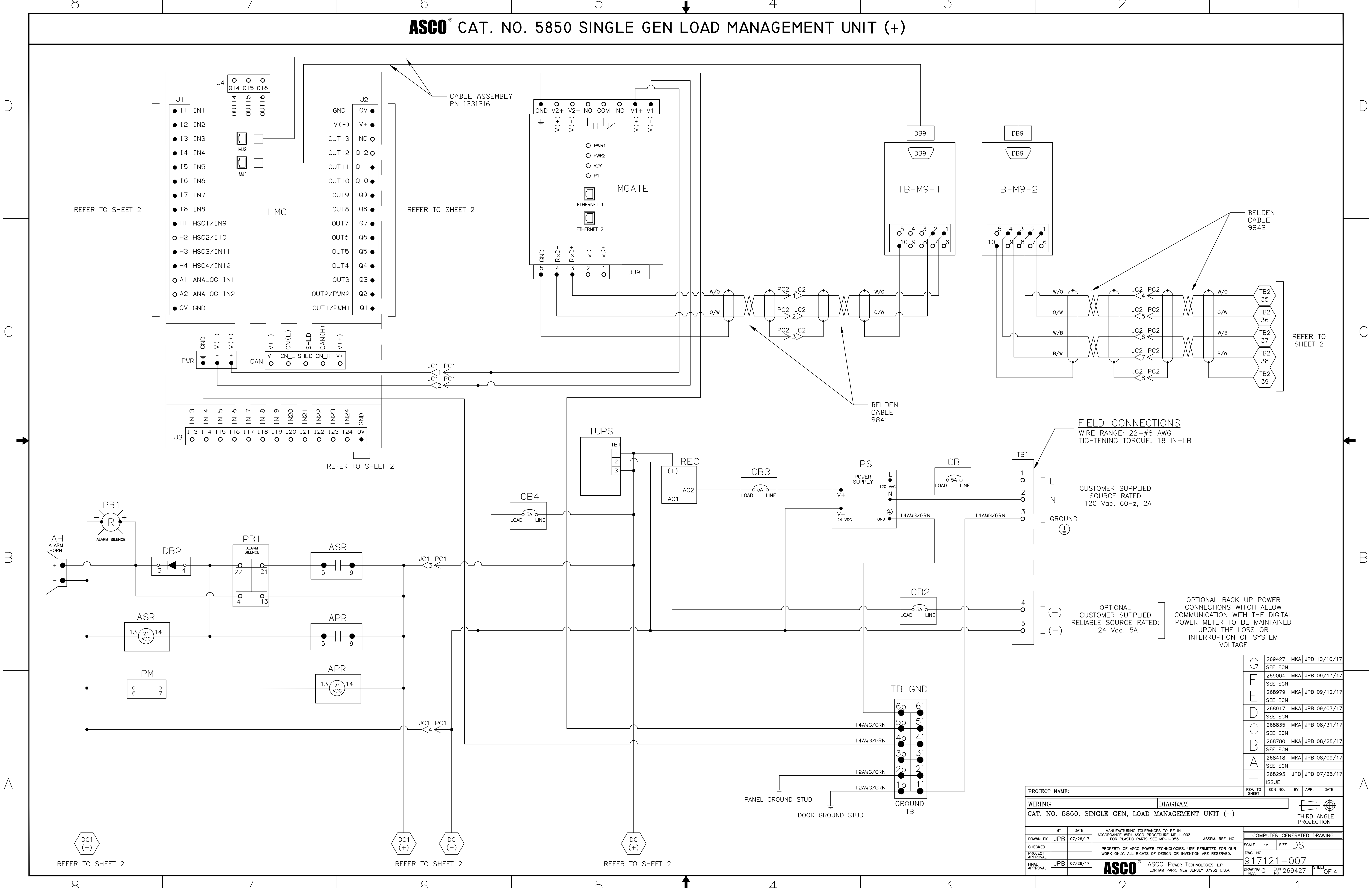


ASCO® CAT. NO. 5850 SINGLE GEN LOAD MANAGEMENT UNIT (+)



FIELD CONNECTIONS
 WIRE RANGE: 22-#8 AWG
 TIGHTENING TORQUE: 18 IN-LB

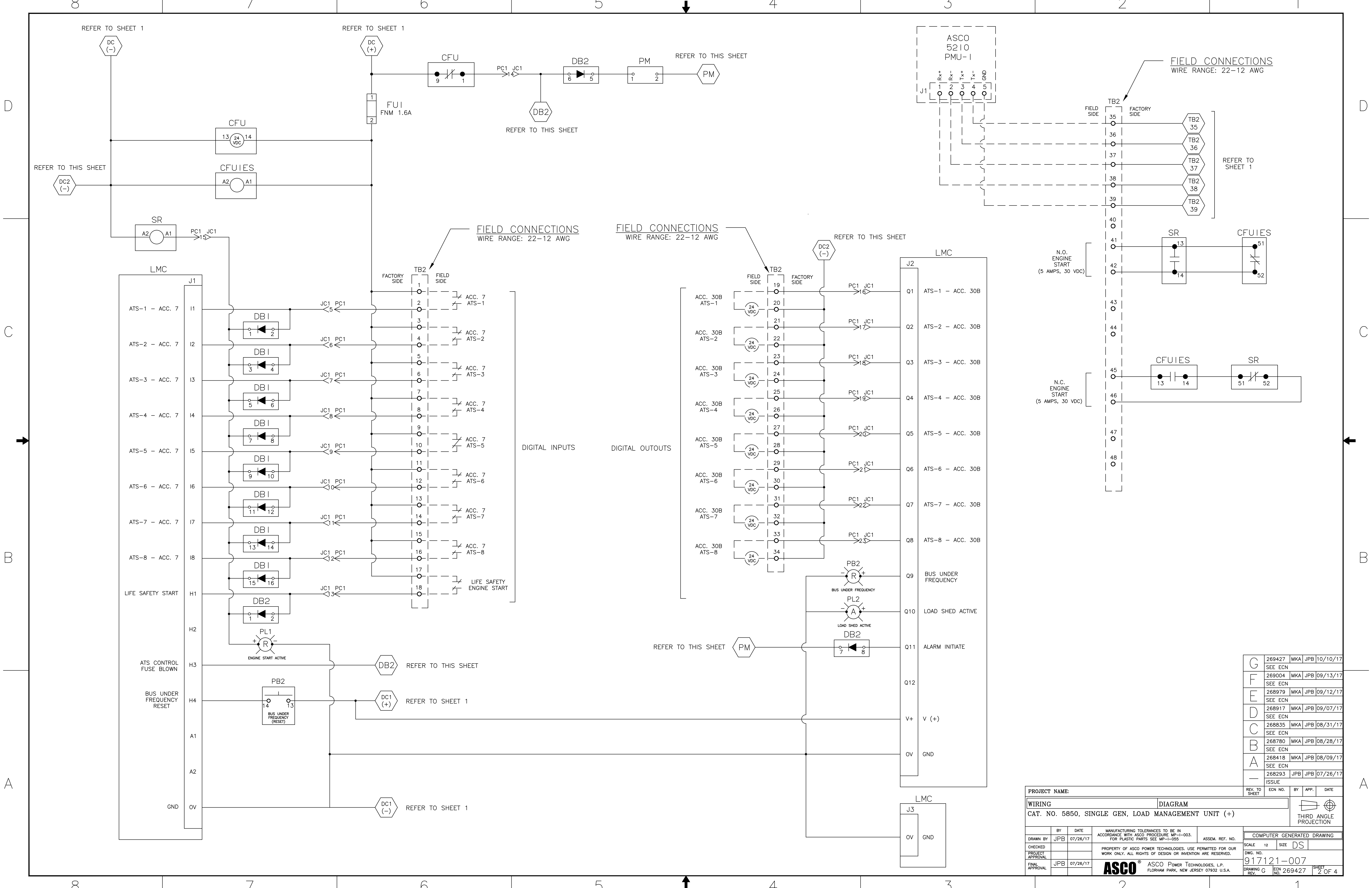
CUSTOMER SUPPLIED
 SOURCE RATED
 120 Vac, 60Hz, 2A

OPTIONAL
 CUSTOMER SUPPLIED
 RELIABLE SOURCE RATED:
 24 Vdc, 5A

OPTIONAL BACK UP POWER
 CONNECTIONS WHICH ALLOW
 COMMUNICATION WITH THE DIGITAL
 POWER METER TO BE MAINTAINED
 UPON THE LOSS OR
 INTERRUPTION OF SYSTEM
 VOLTAGE

G	269427	MKA	JPB	10/10/17
	SEE ECN			
F	269004	MKA	JPB	09/13/17
	SEE ECN			
E	268979	MKA	JPB	09/12/17
	SEE ECN			
D	268917	MKA	JPB	09/07/17
	SEE ECN			
C	268835	MKA	JPB	08/31/17
	SEE ECN			
B	268780	MKA	JPB	08/28/17
	SEE ECN			
A	268418	MKA	JPB	08/09/17
	SEE ECN			
-	268293	JPB	JPB	07/26/17
	ISSUE			

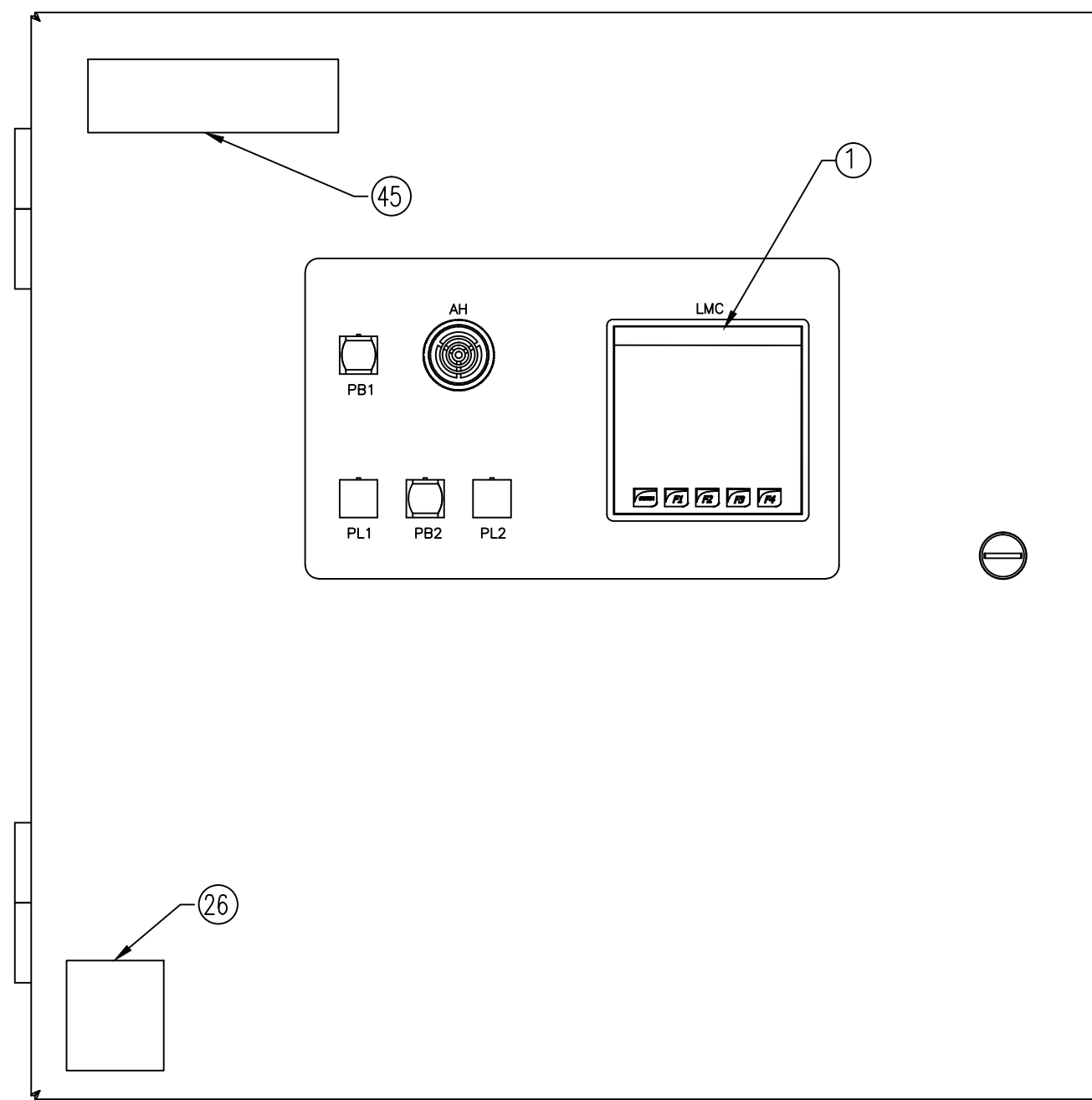
PROJECT NAME:		REV. TO SHEET	ECN NO.	BY	APP.	DATE
WIRING DIAGRAM						
CAT. NO. 5850, SINGLE GEN, LOAD MANAGEMENT UNIT (+)						
BY	DATE	MANUFACTURING TOLERANCES TO BE IN ACCORDANCE WITH ASCO PROCEDURE MP-1-003. FOR PLASTIC PARTS SEE MP-1-055		ASSEM. REF. NO.	COMPUTER GENERATED DRAWING	
DRAWN BY	JPB	07/26/17			SCALE	12 DS
CHECKED					DWG. NO.	
PROJECT APPROVAL					PROPERTY OF ASCO POWER TECHNOLOGIES. USE PERMITTED FOR OUR WORK ONLY. ALL RIGHTS OF DESIGN OR INVENTION ARE RESERVED.	
FINAL APPROVAL	JPB	07/26/17			917121-007	
					DRAWING G	ECN NO. 269427
						SHEET 1 OF 4



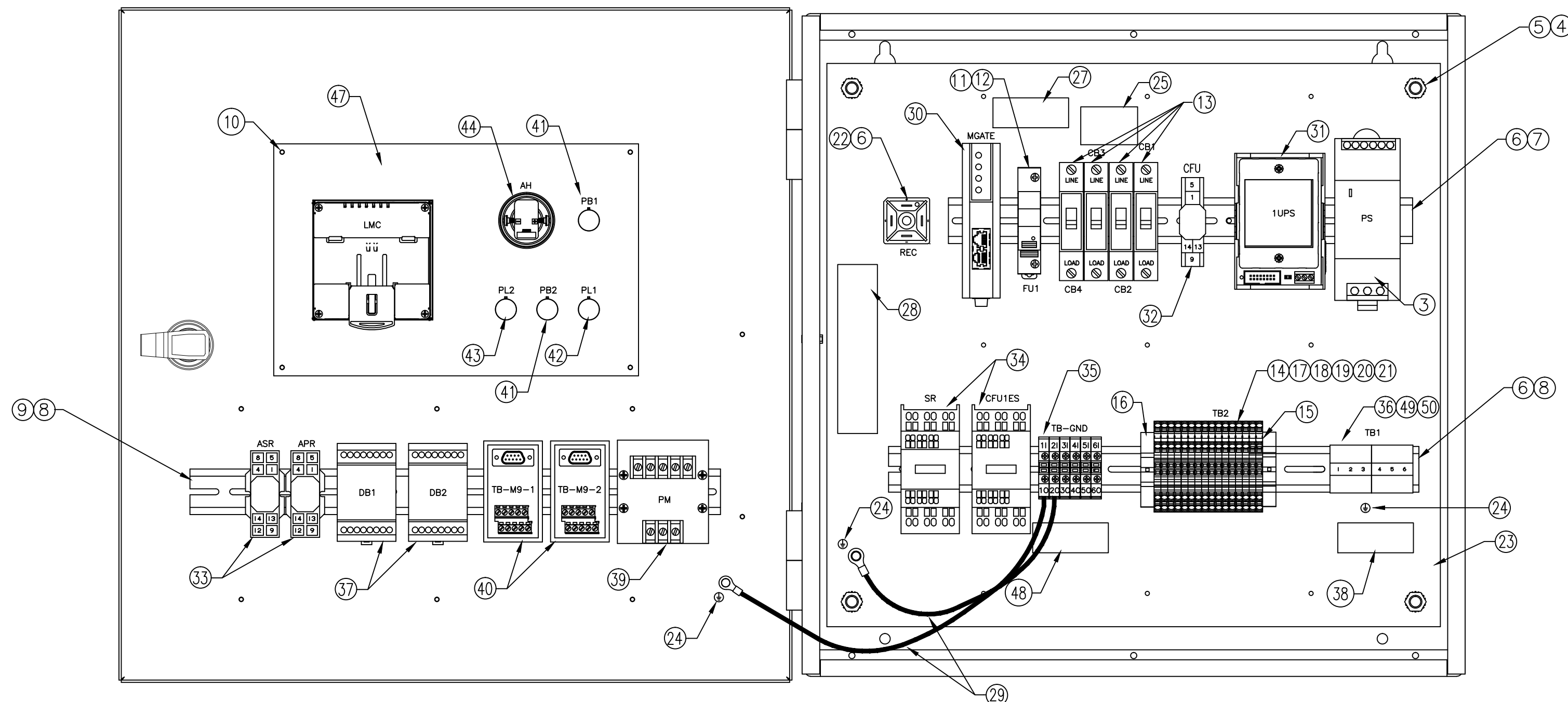
G	269427	MKA	JPB	10/10/17
	SEE ECN			
F	269004	MKA	JPB	09/13/17
	SEE ECN			
E	268979	MKA	JPB	09/12/17
	SEE ECN			
D	268917	MKA	JPB	09/07/17
	SEE ECN			
C	268835	MKA	JPB	08/31/17
	SEE ECN			
B	268780	MKA	JPB	08/28/17
	SEE ECN			
A	268418	MKA	JPB	08/09/17
	SEE ECN			
-	268293	JPB	JPB	07/26/17
	ISSUE			

PROJECT NAME:		REV. TO SHEET	ECN NO.	BY	APP.	DATE
WIRING DIAGRAM						
CAT. NO. 5850, SINGLE GEN, LOAD MANAGEMENT UNIT (+)						
DRAWN BY	DATE	MANUFACTURING TOLERANCES TO BE IN ACCORDANCE WITH ASCO PROCEDURE MP-1-003. FOR PLASTIC PARTS SEE MP-1-005.		ASSEM. REF. NO.	COMPUTER GENERATED DRAWING	
JPB	07/26/17				SCALE	12 DS
CHECKED		PROPERTY OF ASCO POWER TECHNOLOGIES, USE PERMITTED FOR OUR WORK ONLY. ALL RIGHTS OF DESIGN OR INVENTION ARE RESERVED.			DWG. NO.	
PROJECT APPROVAL					917121-007	
FINAL APPROVAL	JPB	07/26/17	ASCO® ASCO POWER TECHNOLOGIES, L.P. FLORHAM PARK, NEW JERSEY 07932 U.S.A.		DRAWING G	ECN NO. 269427
						SHEET 2 OF 4

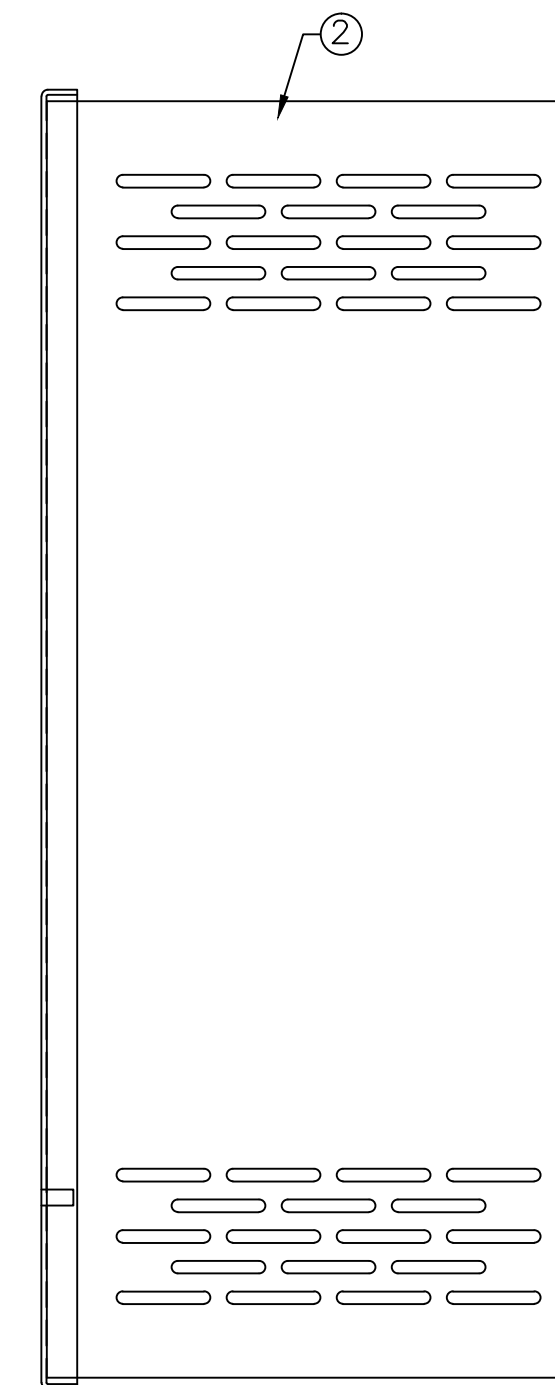
PHYSICAL LAYOUT



FRONT VIEW
WITH DOOR CLOSED



FRONT VIEW
WITH DOOR OPEN



RIGHT SIDE VIEW

ITEM	DESCRIPTION	ASCO PN	QUANTITY
1	LOAD MANAGEMENT CONTROLLER-ADV	ASCOLMC-002	1
2	ENCLOSURE	916224-007	1
3	POWER SUPPLY, 120 WATT, 24VDC	SDN5-24-100C	1
4	NUT, 3/8-16	073413-014-A2	4
5	WASHER, SHAKEPROOF	070022-011-A3	4
6	SCREW, #8 SELF TAPPING	061279-057	8
7	MOUNTING RAIL, 14.0"	383774-020	1
8	MOUNTING RAIL, 16.0"	383774-007	2
9	NUT, SHAKEPROOF, 8-32	113700-004	4
10	NUT, SHAKEPROOF, 6-32	113700-002	4
11	FUSE HOLDER, 30A, 600V	738797-005	1
12	FUSE, FNM 1.6 A, 250V	241353-013	1
13	CIRCUIT BREAKER, 5A	S201-K5	4
14	SPRING CAGE, TB, TRIPLE DECK	605575-001	16
15	END SECTION FOR TB	605576-001	1
16	END STOP FOR TB	605717-002	2
17	MARKER CARD (1-10)	605589-001	1
18	MARKER CARD (11-20)	605589-002	1
19	MARKER CARD (21-30)	605589-003	1
20	MARKER CARD (31-40)	605589-004	1
21	MARKER CARD (41-50)	605589-005	1
22	RECTIFIER	629570	1
23	MOUNTING PLATE	921603-006	1
24	LABEL, GROUND	311855	3
25	LABEL, WARNING	LL-1233	1
26	LABEL, PRODUCT	609056-015	1
27	LABEL, REPLACEMENT FUSE	785927-005	1
28	LABEL, DANGER VOLTAGE	711843	1
29	GROUND STRAP ASSEMBLY	863725-002	2
30	MOXA MGATE	MB31701	1
31	UPS MODULE, 24VDC	903401	1
32	IDEC RH1 RELAY ASSEMBLY, 24VDC	631105-001	1
33	IDEC RH2 RELAY ASSEMBLY, 24VDC	631105-002	2
34	CONTACTOR, 5NO, 4NC, 24VDC	401612-004-B	2
35	TERMINAL BLOCK, DISTRIBUTION	11541705	1
36	TERMINAL BLOCK, NDN3	NDN3	2
37	DIODE ASSEMBLY, 8 DIODES	2949389	2
38	LABEL, TORQUE	955992-001	1
39	PULSE MODULE	267566	1
40	CONNECTOR, DB9 MALE	TB-M9	2
41	PUSHBUTTON, MOM., ILLUM., RED	706996-001	2
42	PILOT LIGHT, RED, LED, 24VAC/VDC	707016-006-A	1
43	PILOT LIGHT, YEL., LED, 24VAC/VDC	707016-008-A	1
44	ALARM HORN	SC628	1
45	ASCO LOGO	977801-005	1
46	CABLE ASSEMBLY, RJ45 TO DB9	1231216	2
47	DOOR CONTROL PLATE	1198671	1
48	LABEL, TORQUE	955992-003	1
49	TERMINAL BLOCK, MARKER, 1-3	309457-001	1
50	TERMINAL BLOCK, MARKER, 4-6	309457-002	1

F	269004	MKA	JPB	09/13/17
	SEE ECN			
E	268979	MKA	JPB	09/12/17
	SEE ECN			
D	268917	MKA	JPB	09/07/17
	SEE ECN			
C	268835	MKA	JPB	08/31/17
	SEE ECN			
B	268780	MKA	JPB	08/28/17
	SEE ECN			
A	268418	MKA	JPB	08/09/17
	SEE ECN			
G	269427	MKA	JPB	10/10/17
	SEE ECN			
	268293	JPB	JPB	07/26/17
	ISSUE			

PROJECT NAME: **WIRING DIAGRAM**
 CAT. NO. 5850, SINGLE GEN, LOAD MANAGEMENT UNIT (+)

REV. TO SHEET: G
 ECN NO.: 269427
 BY: MKA
 APPR.: JPB
 DATE: 10/10/17

SCALE: 12
 SIZE: DS
 DWG. NO.: 917121-007
 SHEET: 3 OF 4

PROPERTY OF ASCO POWER TECHNOLOGIES, USE PERMITTED FOR OUR WORK ONLY. ALL RIGHTS OF DESIGN OR INVENTION ARE RESERVED.

ASCO® ASCO Power Technologies, L.P.
 FLOHAM PARK, NEW JERSEY 07932 U.S.A.

WIRE RUNS LIST

DOOR SECTION/PANEL C

INTERIOR SECTION/PANEL A

WIRE NO.	DOOR CONNECTIONS	CLR	AWG
54	ASR-9,PB1-13		16
54	PB1-13,APR-9		
54	APR-9,APR-14		
54	APR-14,PB2-13		
54	PB2-13,LMC-J2-(V+)		
55	PM-6,ASR-13		
55	LMC-J2-OV,LMC-J3-OV		
55	LMC-J3-OV,LMC-J1-OV		
56	ASR-5,PB1-21		
57	PB1-22,DB2-4		
57	DB2-4,ASR-14		
57	ASR-14,APR-5		
58	DB2-3,PB1-14		
59	PM-7,APR-13		
60	LMC-J1-11,DB1-2		
61	LMC-J1-12,DB1-4		
62	LMC-J1-13,DB1-6		
63	LMC-J1-14,DB1-8		
64	LMC-J1-15,DB1-10		
65	LMC-J1-16,DB1-12		
66	LMC-J1-17,DB1-14		
67	LMC-J1-18,DB1-16		
68	LMC-J1-H1,DB2-2		
69	DB2-6,LMC-J1-H3		
70	DB2-5,PM-1		
71	PM-2,DB2-7		
72	DB1-1,DB1-3		
72	DB1-3,DB1-5		
72	DB1-5,DB1-7		
72	DB1-7,DB1-9		
72	DB1-9,DB1-11		
72	DB1-11,DB1-13		
72	DB1-13,DB1-15		
72	DB1-15,DB2-1		
73	LMC-J1-H4,PB2-14		
74	LMC-J2-Q11,DB2-8		

WIRE NO.	JC1 DOOR SECTION	CLR	AWG
52	JC1-1,LMC-PWR-(+)		16
53	JC1-2,LMC-PWR-(-)		
54	JC1-3,ASR-9		
55	JC1-4,PM-6		
60	JC1-5,LMC-J1-I1		
61	JC1-6,LMC-J1-I2		
62	JC1-7,LMC-J1-I3		
63	JC1-8,LMC-J1-I4		
64	JC1-9,LMC-J1-I5		
65	JC1-10,LMC-J1-I6		
66	JC1-11,LMC-J1-I7		
67	JC1-12,LMC-J1-I8		
68	JC1-13,LMC-J1-H1		
69	JC1-14,DB2-6		
72	JC1-15,DB1-1		
73	JC1-16,LMC-J2-Q1		
74	JC1-17,LMC-J2-Q2		
75	JC1-18,LMC-J2-Q3		
76	JC1-19,LMC-J2-Q4		
77	JC1-20,LMC-J2-Q5		
78	JC1-21,LMC-J2-Q6		
79	JC1-22,LMC-J2-Q7		
80	JC1-23,LMC-J2-Q8		
	JC1-24		

WIRE NO.	JC2 DOOR SECTION	CLR	AWG
83	JC2-1,TB-M9-1-1	WHT/ORG	24 COND
84	JC2-2,TB-M9-1-2	ORG/WHT	
85	JC2-3,TB-M9-1-10	SHLD	
86	JC2-4,TB-M9-2-2	WHT/ORG	24 COND
87	JC2-5,TB-M9-2-1	ORG/WHT	
88	JC2-6,TB-M9-2-4	WHT/BLU	
89	JC2-7,TB-M9-2-3	BLU/WHT	
90	JC2-8,TB-M9-2-10	SHLD	
	JC2-9		
	JC2-10		
	JC2-11		
	JC2-12		
	JC2-13		
	JC2-14		
	JC2-15		
	JC2-16		
	JC2-17		
	JC2-18		
	JC2-19		
	JC2-20		
	JC2-21		
	JC2-22		
	JC2-23		
	JC2-24		

WIRE NO.	USER CONTROLS DOOR SECTION	CLR	AWG
55	AH-(-),ASR-13		22
55	AH-(-),PB1-(-)		
55	PB1-(-),PL1-(-)		
55	PL1-(-),PB2-(-)		
55	PB2-(-),PL2-(-)		
55	IUPS-TB1-2,MGATE-(V1-)		
72	PL1(+),DB2-1		
58	PB1(+),AH-(+)		
58	AH-(+),DB2-3		
81	PB2(+),LMC-J2-Q9		
82	PL2(+),LMC-J2-Q10		

WIRE NO.	INTERIOR CONNECTIONS	CLR	AWG
2	TB1-1,CB1-LINE		16
3	TB1-2,PS-N		
4	TB1-4,CB2-LINE		
5	TB1-5,PS-(V-)		
5	PS-(V-),IUPS-TB1-2		
5	IUPS-TB1-2,MGATE-(V1-)		
5	CFU-13,CFUIES-A2		
5	CFUIES-A2,SR-A2		
5	SR-A2,TB2-20		
5	TB2-20,TB2-22		
5	TB2-22,TB2-24		
5	TB2-24,TB2-26		
5	TB2-26,TB2-28		
5	TB2-28,TB2-30		
5	TB2-30,TB2-32		
5	TB2-32,TB2-34		
5	TB2-34,TB1-5		
6	CB1-LOAD,PS-L		
7	CB3-LINE,PS-(V+)		
8	CB3-LOAD,REC-AC2		
9	REC-AC1,CB2-LOAD		
10	CB4-LINE,IUPS-TB1-3		
10	IUPS-TB1-3,IUPS-TB1-1		
10	IUPS-TB1-1,REC-(+)		
10	REC-(+),CFU-9		
10	CFU-9,FU1-1		
11	CB4-LOAD,MGATE-(V+)		
14	CFU-14,FU1-2		
14	CFU-14,CFUIES-A1		
14	CFUIES-A1,TB2-1		
14	TB2-1,TB2-3		
14	TB2-3,TB2-5		
14	TB2-5,TB2-7		
14	TB2-7,TB2-9		
14	TB2-9,TB2-11		
14	TB2-11,TB2-13		
14	TB2-13,TB2-15		
14	TB2-15,TB2-17		
42	TB2-41,SR-13		
42	SR-13,CFUIES-51		
43	TB2-42,SR-14		
43	SR-14,CFUIES-52		
46	TB2-45,CFUIES-13		
47	CFUIES-14,SR-51		
48	SR-52,TB2-46		

WIRE NO.	PCI INTERIOR SECTION	CLR	AWG
11	PCI-1,MGATE-(V1+)		16
5	PCI-2,MGATE-(V1-)		
10	PCI-3,CB4-LINE		
5	PCI-4,CFU-13		
15	PCI-5,TB2-2		
16	PCI-6,TB2-4		
17	PCI-7,TB2-6		
18	PCI-8,TB2-8		
19	PCI-9,TB2-10		
20	PCI-10,TB2-12		
21	PCI-11,TB2-14		
22	PCI-12,TB2-16		
23	PCI-13,TB2-18		
24	PCI-14,CFU-1		
25	PCI-15,SR-A1		
26	PCI-16,TB2-19		
27	PCI-17,TB2-21		
28	PCI-18,TB2-23		
29	PCI-19,TB2-25		
30	PCI-20,TB2-27		
31	PCI-21,TB2-29		
32	PCI-22,TB2-31		
33	PCI-23,TB2-33		
	PCI-24		

WIRE NO.	PC2 INTERIOR SECTION	CLR	AWG
34	PC2-1,MGATE-3	WHT/ORG	24 COND
35	PC2-2,MGATE-4	ORG/WHT	
36	PC2-3,MGATE-5	SHLD	
37	PC2-4,TB2-35	WHT/ORG	24 COND
38	PC2-5,TB2-36	ORG/WHT	
39	PC2-6,TB2-37	WHT/BLU	
40	PC2-7,TB2-38	BLU/WHT	
41	PC2-8,TB2-39	SHLD	
	PC2-9		
	PC2-10		
	PC2-11		
	PC2-12		
	PC2-13		
	PC2-14		
	PC2-15		
	PC2-16		
	PC2-17		
	PC2-18		
	PC2-19		
	PC2-20		
	PC2-21		
	PC2-22		
	PC2-23		
	PC2-24		

WIRE NO.	TB-GND INTERIOR SECTION	CLR	AWG
1	TB-GND-1o,DOOR GND STUD	GRN	12
1	TB-GND-2o,PANEL GND STUD	GRN	12
1	TB-GND-3o	GRN	14
1	TB-GND-4o,LMC-PWR-GND	GRN	
1	TB-GND-5o,MGATE-GND	GRN	
1	TB-GND-6o,PS-GND	GRN	
1	TB-GND-1i,TB1-3	GRN	
1	TB-GND-2i	GRN	
1	TB-GND-3i	GRN	
1	TB-GND-4i	GRN	
1	TB-GND-5i	GRN	
1	TB-GND-6i	GRN	

G	269427	MKA	JPB	10/10/17
	SEE ECN			
F	269004	MKA	JPB	09/13/17
	SEE ECN			
E	268979	MKA	JPB	09/12/17
	SEE ECN			
D	268917	MKA	JPB	09/07/17
	SEE ECN			
C	268835	MKA	JPB	08/31/17
	SEE ECN			
B	268780	MKA	JPB	08/28/17
	SEE ECN			
A	268418	MKA	JPB	08/09/17
	SEE ECN			
-	268293	JPB	JPB	07/26/17
	ISSUE			

PROJECT NAME: WIRING DIAGRAM
 CAT. NO. 5850, SINGLE GEN, LOAD MANAGEMENT UNIT (+)

REV. TO SHEET: ECN NO. BY: APP. DATE:

THIRD ANGLE PROJECTION

MANUFACTURING TOLERANCES TO BE IN ACCORDANCE WITH ASCO PROCEDURE MP-1-003. FOR PLASTIC PARTS SEE MP-1-005.

PROPERTY OF ASCO POWER TECHNOLOGIES. USE PERMITTED FOR OUR WORK ONLY. ALL RIGHTS OF DESIGN OR INVENTION ARE RESERVED.

SCALE: 12 SIZE: DS

COMPUTER GENERATED DRAWING

DWG. NO. 917121-007

ASCO® ASCO POWER TECHNOLOGIES, L.P.
 FLORHAM PARK, NEW JERSEY 07932 U.S.A.

DRAWING: G ECN NO. 269427 SHEET 4 OF 4