

8 7 6 5 4 3 2 1

**GENERAL NOTES**

- FLOOR MOUNTED ENCLOSURE.  
TYPE 3R CONSTRUCTED FROM CODE GAUGE STEEL.  
FINISH: TYPE 3R, ANSI 61 GRAY POLYESTER SEMI GLOSS ELECTROSTATIC POWDER.  
TYPE 3RX EXTERIOR CONSTRUCTED FROM CODE GAUGE STAINLESS STEEL.  
(R) EXTERIOR CONSTRUCTED FROM TYPE 304 STAINLESS STEEL.  
(S) EXTERIOR CONSTRUCTED FROM TYPE 316 STAINLESS STEEL.
- EXTERIOR DOORS HAVE PADLOCKABLE HANDLES WITH 3-POINT LATCH.
- DESIGNED FOR FRONT ACCESS & REAR ACCESS.
- RECOMMENDED CLEARANCES: FRONT: 36" REAR: 30".
- EXTERIOR VENTS:  
1000A - 1600A: NO VENTS  
2000A: VENTS ARE SUPPLIED WITH POLYESTER FILTERS
- CENTER OF GRAVITY
- APPROXIMATE WEIGHT: 1825 LBS.
- LIFTING PLATES: SECTIONS ARE SUPPLIED WITH LIFTING PLATES. INSPECT PLATES FOR DAMAGE AND TORQUE BOLTS TO 45 FT LBS BEFORE USE. REFER TO ANSI/NEMA PB 2.1 FOR PROPER HANDLING OF EQUIPMENT. AFTER INSTALLATION OF SECTION, REMOVE LIFTING PLATES. REINSTALL BOLTS INTO EXTERIOR HOLES AND TORQUE TO APPROXIMATELY 20 FT LBS.

**TRANSFER SWITCH**

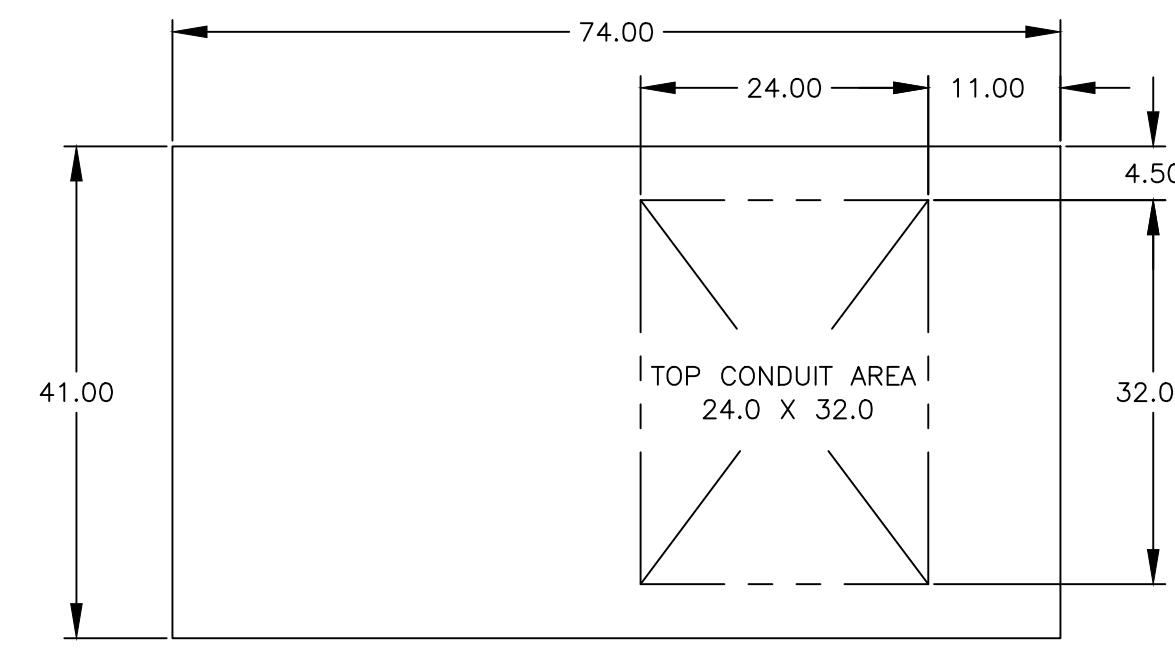
- G FRAME MANUAL TRANSFER SWITCH 1000A - 2000A.
- TRANSFER SWITCH RATING: 1000 AMPS, 1200 AMPS, 1600 AMPS, 2000 AMPS.  
SHORT CIRCUIT RATING WHEN PROTECTED BY A CIRCUIT BREAKER  
FOR 1000-1200A, TIME RESPONSE, MAXIMUM 0.05 SECONDS: 85,000 RMS SYM @ 480V.  
FOR 1600-2000A, TIME RESPONSE, MAXIMUM 0.05 SECONDS: 100,000 RMS SYM @ 480V.
- A FULL RATED NEUTRAL CONNECTION FOR EACH SOURCE AND THE LOAD IS OPTIONAL.  
WHEN PROVIDED IT IS IN ONE OF THE FOLLOWING FORMATS:  
A. SOLID NEUTRAL  
B. SWITCHED NEUTRAL POLE
- UL 1008

**TERMINATIONS 1000-1200 AMPS**

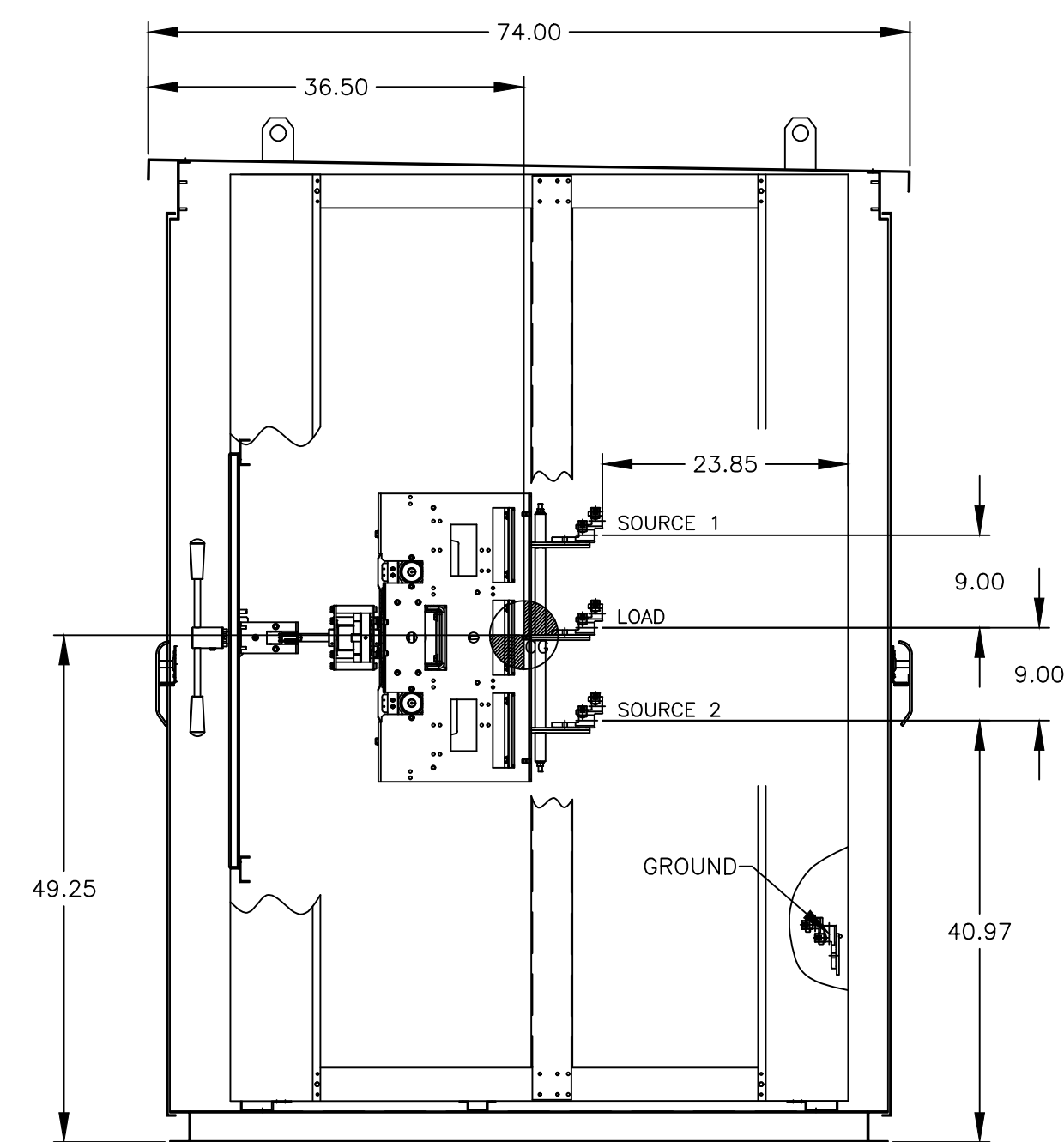
- SUPPLIED WITH MECHANICAL (SCREW TYPE) LUGS SUITABLE FOR CU/AL CABLE .  
SOURCE 1: (4) 1/0 AWG-600MCM PER PHASE AND NEUTRAL.  
LOAD: (4) 1/0 AWG-600MCM PER PHASE AND NEUTRAL.  
SOURCE 2: (4) 1/0 AWG-600MCM PER PHASE AND NEUTRAL.  
GROUND: (12) 1/0 AWG - 750 MCM  
SUITABLE WIRE BENDING SPACE IS PROVIDED AS PER THE NEC
- OPTIONAL LUGS MAY BE SUPPLIED.

**TERMINATIONS 1600-2000 AMPS**

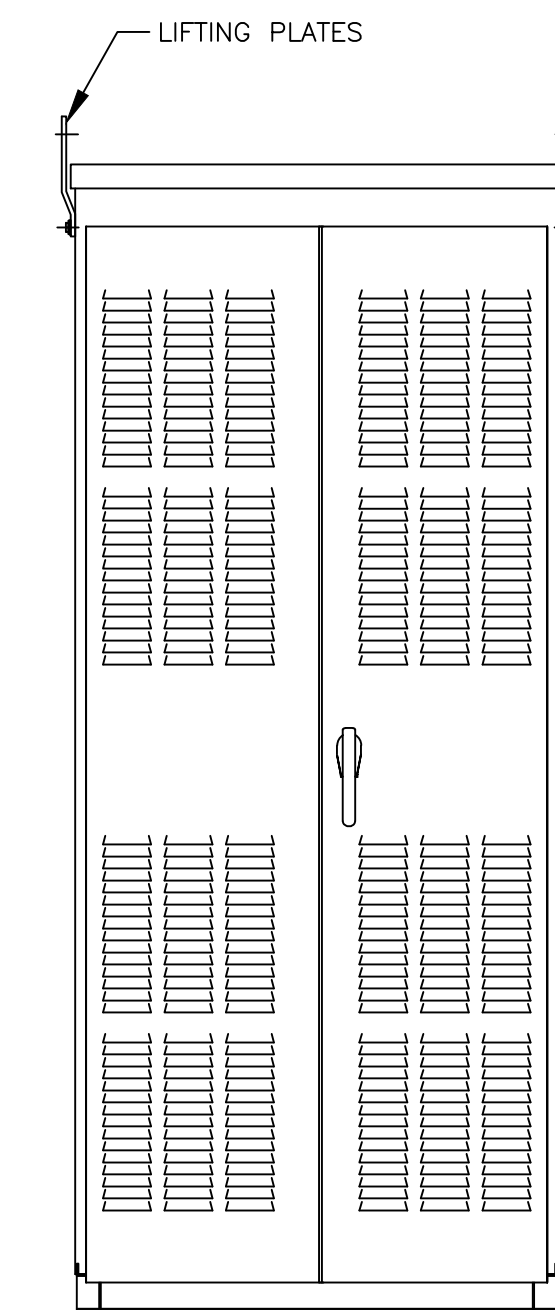
- SUPPLIED WITH MECHANICAL (SCREW TYPE) LUGS SUITABLE FOR CU/AL CABLE .  
SOURCE 1: (6) 1/0 AWG-600MCM PER PHASE AND NEUTRAL.  
LOAD: (6) 1/0 AWG-600MCM PER PHASE AND NEUTRAL.  
SOURCE 2: (6) 1/0 AWG-600MCM PER PHASE AND NEUTRAL.  
GROUND: (18) 1/0 AWG - 750 MCM  
SUITABLE WIRE BENDING SPACE IS PROVIDED AS PER THE NEC
- OPTIONAL LUGS MAY BE SUPPLIED.



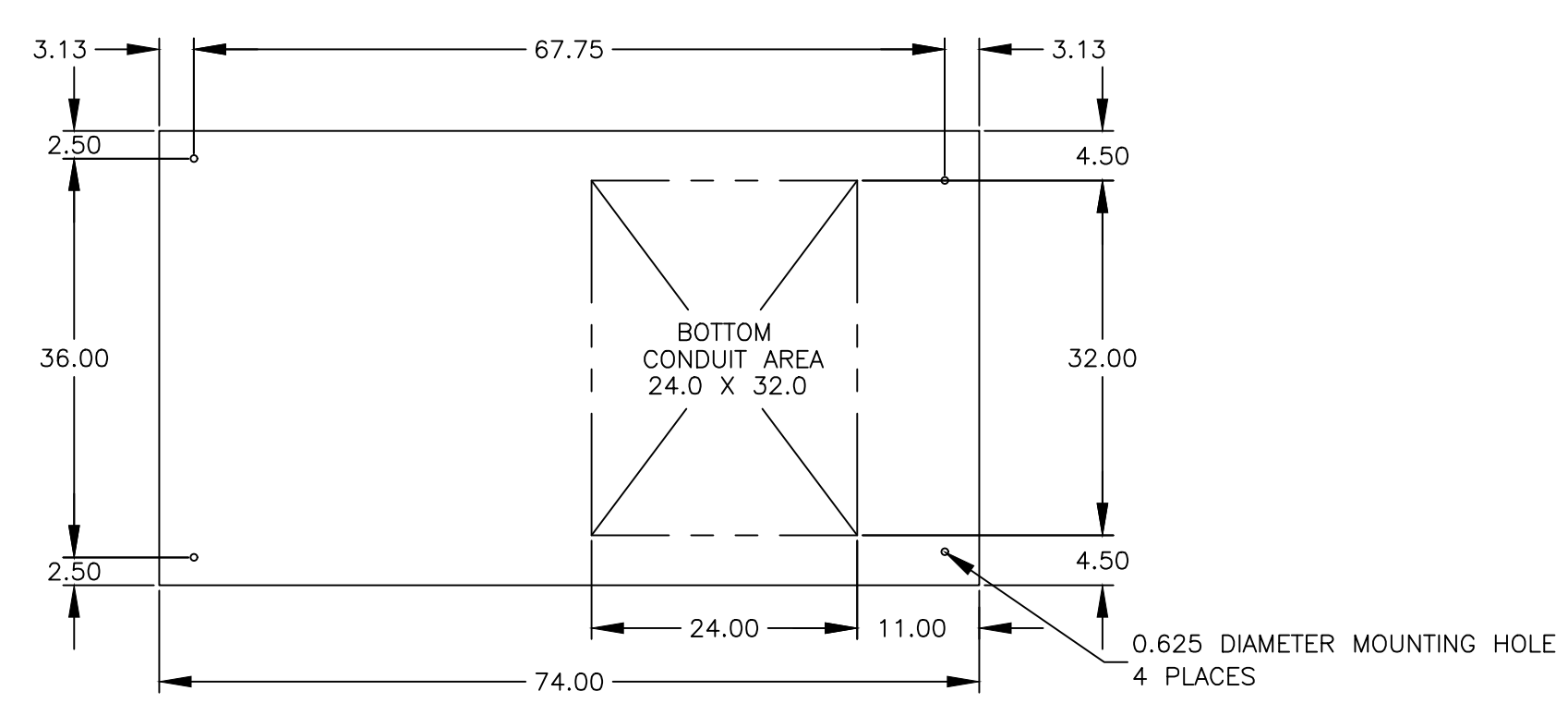
"TOP VIEW"



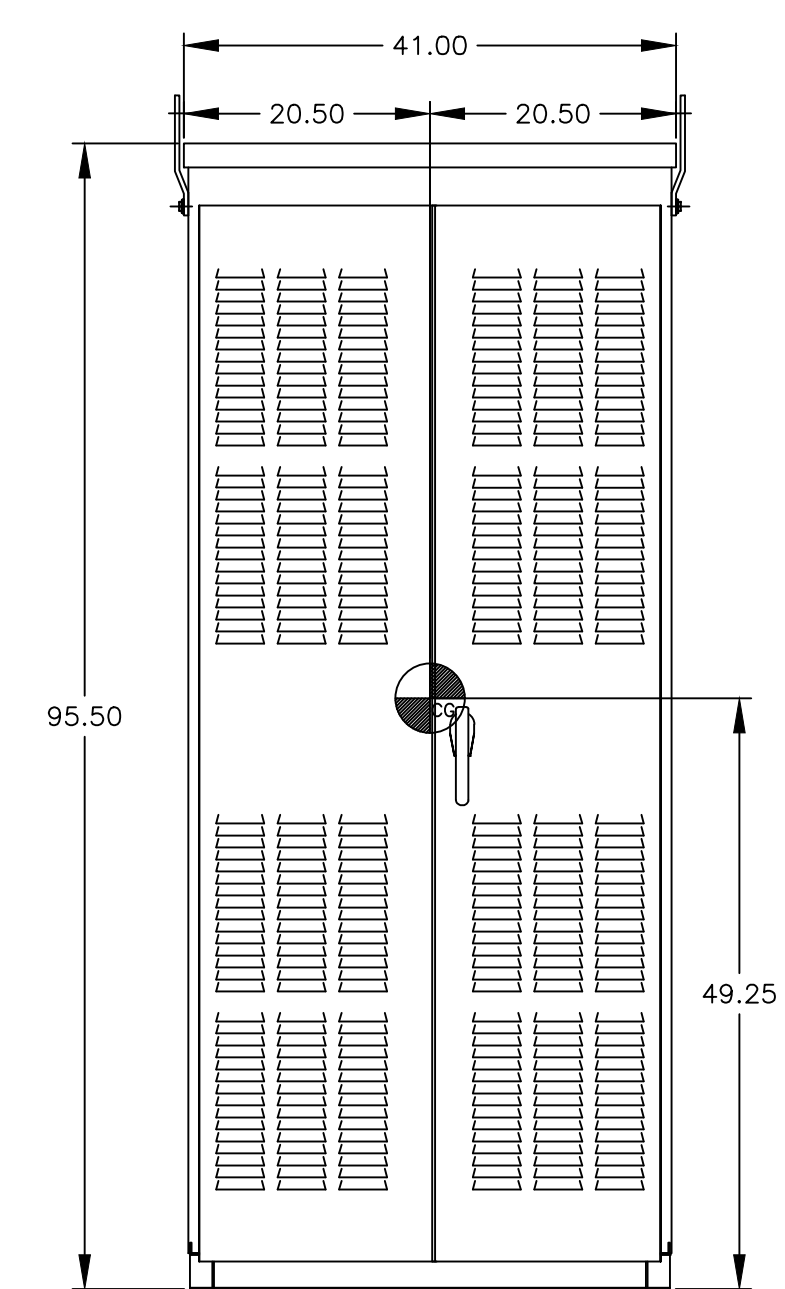
"RIGHT SIDE VIEW"



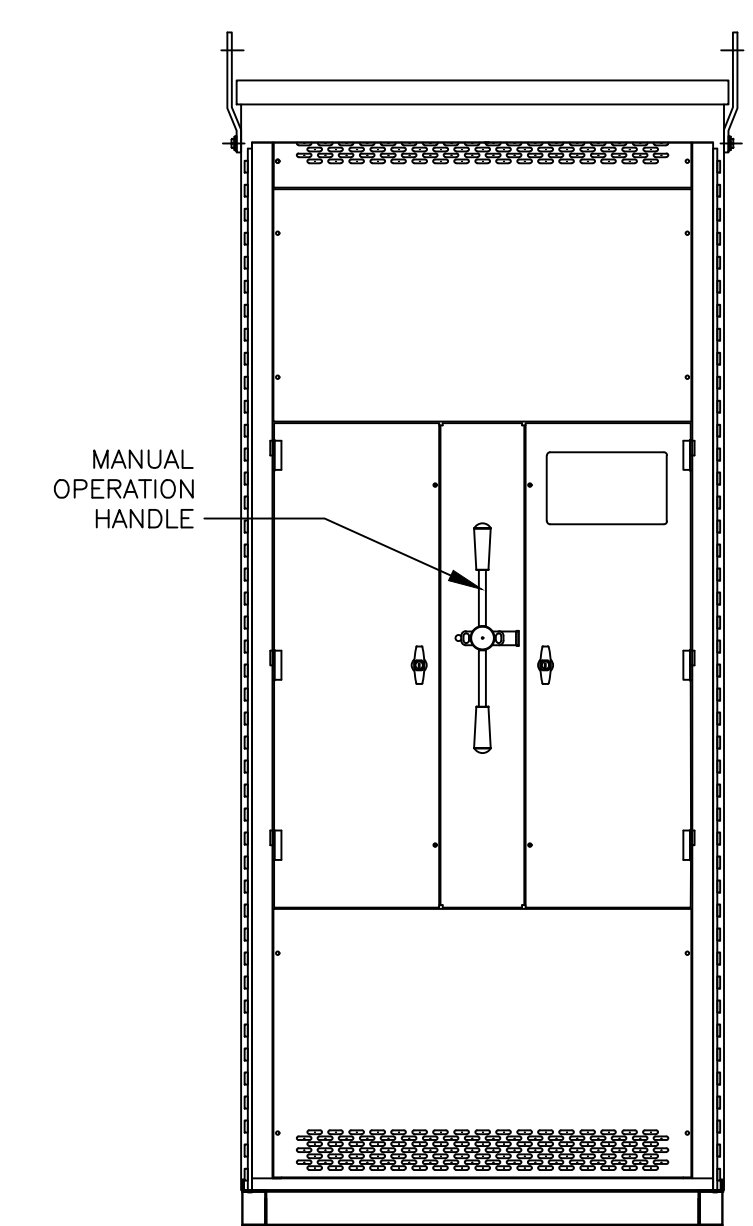
"REAR VIEW"



"PLAN VIEW"



"FRONT VIEW"



"FRONT VIEW WITHOUT EXTERIOR DOORS"

D	294037	VW	RN	02/23/22
C	284769	LAM	RN	6/1/20
B	277643	VAK	RN	03-12-19
A	272969	SG	RN	06/15/18
-	271825	SG	RN	04/09/18

PROJECT NAME:		REV. TO SHEET	ECN NO.	BY	APP.	DATE
OUTLINE		MOUNTING				
GMTS 1000A - 2000A, TYPE 3R/3RX 96 X 41 X 74						
DRAWN BY	BY	DATE	MANUFACTURING TOLERANCES TO BE IN ACCORDANCE WITH ASCO PROCEDURE MP-1-003. FOR PLASTIC PARTS SEE MP-1-055		ASSEM. REF. NO.	COMPUTER GENERATED DRAWING
CHECKED	RN	03/16/18	PROPERTY OF ASCO POWER TECHNOLOGIES. USE PERMITTED FOR OUR WORK ONLY. ALL RIGHTS OF DESIGN OR INVENTION ARE RESERVED.			SCALE 1/16" = 1" SIZE DS
PROJECT APPROVAL						DWG. NO. 977106-002
FINAL APPROVAL						ASCOSCO POWER TECHNOLOGIES, L.P. FLORHAM PARK, NEW JERSEY 07932 U.S.A.
			DRAWING REV. D	ECN NO. 294037	SHEET 1 OF 1	

8 7 6 5 4 3 2 1