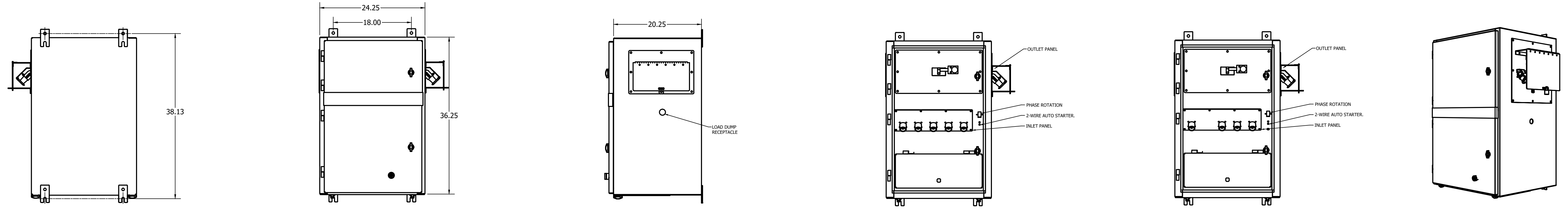


150 AMP DUAL PURPOSE QUICK CONNECT PANEL



REAR VIEW

FRONT VIEW WITH DOORS

RIGHT VIEW

FRONT VIEW 3P+N+G WITHOUT OUTER DOORS

FRONT VIEW 3P+G WITHOUT OUTER DOORS

WALLMOUNT

NOTES:

- BOTTOM INLET PANEL:**
 - FOR USE ONLY FOR CONNECTION OF A GENERATOR TO THE SOURCE TERMINALS OF A TRANSFER SWITCH, SUCH THAT THE INLETS ARE ENERGIZED FROM THE GENERATOR.
 - ETL LISTED TO UL1008 STANDARDS AS A TRANSFER SWITCH ACCESSORY.
 - 16 SERIES MALE CONNECTORS.
- SIDE OUTLET PANEL:**
 - FOR CONNECTION OF A LOAD BANK TO THE LOAD SOURCE FROM THE PERMANENT GENERATOR.
 - ETL LISTED TO UL891 STANDARDS AS A LOAD BANK OUTLET CABINET.
 - 16 SERIES RECESSED FEMALE CONNECTORS WITH FLIP COVERS.
 - PADLOCKABLE COVER OVER THE LOAD BANK RECEPTACLES.
 - LOAD DUMP RECEPTACLES WITH FLIP COVER.
- PANEL RATINGS:**
 - 600V MAX, 50/60 Hz, 150-800A, 3PH/3W OR 3PH/4W, LISTED UL891 STANDARD.
- WCR RATING:**
 - 25K RMS SYMMETRICAL AMPS, 240 VAC MAX.,
 - 18K RMS SYMMETRICAL AMPS, 480 VAC MAX.,
 - 14K RMS SYMMETRICAL AMPS, 600 VAC MAX.,
- ENCLOSURE:**
 - TYPE 3R CONSTRUCTION, FOR OUTDOOR USE ONLY.
 - FINISH, ANSI 61 GREY POWDER COAT.
- REMOVABLE GASKETED SIDE ACCESS PANELS FOR ADDITIONAL CONDUIT AREAS.**
- RECOMMENDED CLEARANCE:**
 - FRONT 23 INCHES.
 - RIGHT SIDE 12.25 INCHES.
 - LEFT SIDE 22 INCHES.
- REMOVABLE GROUNDING STRAP(S) ARE INCLUDED CONNECTING THE GREEN CAMLOCKS TO THE ENCLOSURE.**
- NO NEUTRAL TO GROUND BONDING PROVISIONS INCLUDED.**
- CAMLOCK CONNECTORS ARE SERIES 16 COMPATIBLE. 400A RATED.**
- CASTELL OR KIRK KEY LOCKS MUST BE INSTALLED ON GENERATOR CONNECTION DOOR AND PERMANENT GENERATOR BREAKER WHICH SERVES AS AN INTERLOCK BETWEEN PERMANENT GENERATOR AND PORTABLE GENERATOR.**

CABLING:

- ALL UNITS SUPPLIED WITH MECHANICAL (SCREW TYPE) LUGS.
- LUGS ARE UL LISTED, TIN PLATED, ALUMINUM ALLOY COMPATIBLE WITH COPPER OR ALUMINUM CABLES. (SEE TABLE BELOW)
- LUG SCREWS ARE TIN PLATED, TORQUE TO 19 FT-LBS PER UL4868.
- LUGS ARE ATTACHED TO COPPER PLATED WITH FACTORY SUPPLIED BOLTS, TORQUED TO 30 FT-LBS.
- DUAL LUGS FOR THRU-CONNECTED UNITS.

STANDARD FEATURES:

- CASTELL™ TRAPPED KEY INTERLOCK ACCESS TO PORTABLE GENERATOR INLETS.
- CASTELL™ LOCK AND KEY FOR PERMANENT GENERATOR BREAKER AND TOP SECTION.
- PHASE ROTATION MONITOR FOR TEMPORARY POWER CONNECTION.
- TWO WIRE AUTO START TERMINALS.
- LOAD DUMP RECEPTACLE L1-15R 125V TWIST LOCK RECEPTACLE.

CIRCUIT BREAKER HDL36150:

- SQUARE "D" 80% RATED TYPE "HDL", 150AF/150AT MOLDED CASE, THERMAL-MAGNETIC TRIP, SHORT CIRCUIT RATING: AIC 18,000 RMS SYM @ 480V.
- UL489.

OPTIONAL ACCESSORIES:

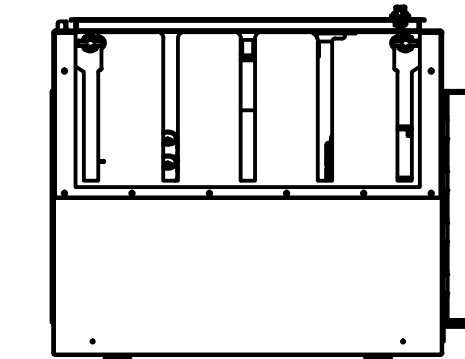
- ACC. 147QC - COLOR CODING FOR CANADIAN CAMLOK CONNECTORS
THREE PHASE:
RED (PHASE A), BLK (PHASE B), BLU (PHASE C), NEUT. WHEN REQUIRED (WHT)

INSTALLATION:

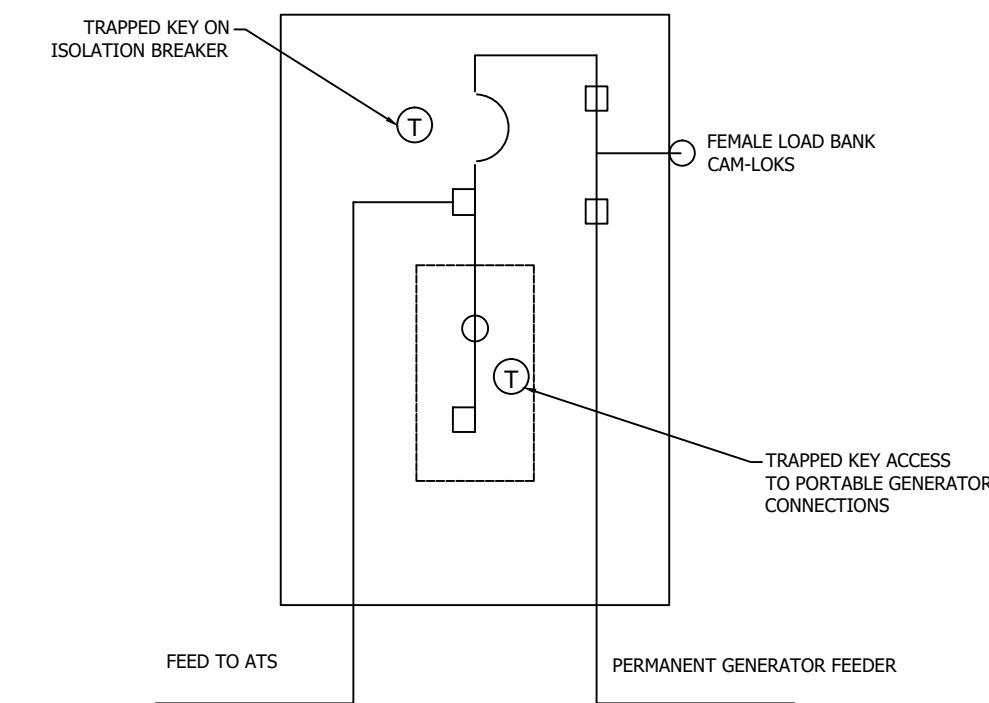
- SURFACE TO WHICH THE PANEL IS TO BE INSTALLED AND THE INSTALLATION METHOD / HARDWARE MUST BE CAPABLE OF SUPPORTING THE WEIGHT OF THE PANEL (WEIGHTS SHOWN IN TABLE BELOW) AS WELL AS THE WEIGHT OF THE TEMPORARY CABLES TO BE ATTACHED TO IT.
- INSTALLATION IS TO BE PERFORMED BY QUALIFIED PERSONNEL IN ACCORDANCE WITH LOCAL AND NATIONAL CODES AND GOOD ENGINEERING PRACTICES.
- PANEL MUST BE LEVEL AND PLUMB TO ALLOW FOR PROPER DRAINAGE / WATER RUNOFF.

| AMPS | MATERIAL | WEIGHT (lbs) | | CAMLOCK QUANTITY | | | LUG QUANTITY | | | SIZE |
|------|------------|--------------|-----|------------------|---------|--------|--------------|---------|--------|----------------|
| | | ALUM. | SS | PHASE | NEUTRAL | GROUND | PHASE | NEUTRAL | GROUND | |
| 150A | 3P + G | 120 | 160 | 1 | 0 | 1 | 2 | 0 | 1 | 100 TO 350 MCM |
| | 3P + N + G | 1/8" 11 GA. | 128 | 172 | 1 | 1 | 1 | 2 | 2 | |

* PHASE, NEUTRAL & GROUND LUGS ARE SINGLE HOLE MOUNT SINGLE BARREL LUGS.



BOTTOM VIEW WITHOUT ACCESS DOOR



ONE-LINE DIAGRAM

| CATALOG TYPE | CONNECTIONS | CONNECTOR TYPE | GROUND | CATALOG NUMBER | | | VOLT CODE | BLANK | OPTIONAL ACCESSORY | ENCLOSURE CODE | EXPLANATION OF CATALOG NUMBER CODES | | | | | | | | | | | |
|--------------|-------------|----------------|--------|--------------------|-------|------|-------------|-------|--------------------|----------------|-------------------------------------|---------------------|------------------|-------------------------|---------------------------|-------------------------|-------------------|---|--|--------|----------|---|
| | | | | INPUT NEUTRAL TYPE | POLES | AMPS | | | | | CONNECTIONS CODE | CONNECTOR TYPE CODE | GROUND TYPE CODE | INPUT NEUTRAL TYPE CODE | VOLTAGE CODES | OPTIONAL ACCESSORY CODE | ENCLOSURE CODES | | | | | |
| 30C | D | C | A N | O A | 3 | 150 | F N R | 0 | 0 X Z | F S | D=DUAL | C=CAMLOCK | A=100% N=25% | GREEN | 0=NONE A=100% WHITE | F N R | 240 480 600 | BLK,RED,BLU BRN,ORG,YEL BLK,BLK,BLK | 0=STANDARD X=ACCESSORY Z=SPECIAL | F S | 3R 3R | SECURE ENCLOSURE OUTDOOR, RAINPROOF, SLEET & ICE RESISTANT (ALUMINUM) SECURE ENCLOSURE OUTDOOR, RAINPROOF, SLEET & ICE RESISTANT (316 STAINLESS STEEL) |

278882 MKA JPB 05/15/20

PROJECT NAME: QUICK CONNECT PANEL

150 AMPS

600V MAX, 3PH/3W OR 3PH/4W

SCALE: 12 SIZE DS

1397480

ASCO POWER TECHNOLOGIES, L.P.

FLORHAM PARK, NEW JERSEY 07932 U.S.A.

REV. 1 OF 1