

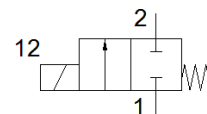
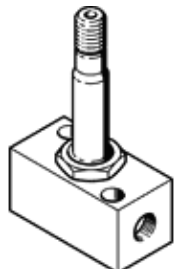
Solenoid valve

MCH-2-1/8

Part number: 546041
Product to be discontinued

FESTO

Type to be discontinued. Available until 2018. See Support Portal for alternative products.



Data sheet

| Feature | Value |
|---|---|
| Valve function | 2/2 closed, monostable |
| Type of actuation | electrical |
| Width | 32 mm |
| Standard nominal flow rate | 300 l/min |
| Working pressure | 0 ... 7 bar |
| Design structure | Poppet seat |
| Type of reset | mechanical spring |
| Protection class | IP65 |
| Nominal size | 4 mm |
| Sealing principle | soft |
| Assembly position | Any |
| Manual override | None |
| Type of piloting | direct |
| Flow direction | reversible |
| Switching time off | 20 ms |
| Switching time on | 18 ms |
| Operating medium | Compressed air in accordance with ISO8573-1:2010 [7:::] |
| Note on operating and pilot medium | Lubricated operation possible (subsequently required for further operation) |
| Corrosion resistance classification CRC | 2 - Moderate corrosion stress |
| Medium temperature | -10 ... 60 °C |
| Ambient temperature | -5 ... 40 °C |
| Product weight | 335 g |
| Electrical connection | Plug |
| Mounting type | with through hole |
| Pneumatic connection, port 1 | G1/8 |
| Pneumatic connection, port 2 | G1/8 |
| Materials information for seals | NBR |
| Materials information, housing | Aluminum Anodized |