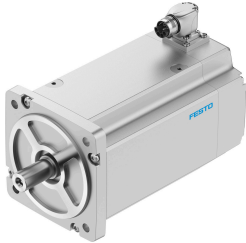


Servo motor EMMT-AS-150-MK-HS-R2M

Part number: 8148283

FESTO



Data sheet

Feature	Value
Ambient temperature	-15 °C...40 °C
Note on ambient temperature	Up to 80 °C with derating of -1.5% per degree Celsius
Max. installation height	4000 m
Information on max. installation height	with 1,000 m and longer only with derating of -1.0% per 100 m
Storage temperature	-20 °C...70 °C
Relative air humidity	0 - 90 %
Conforms to standard	IEC 60034
Thermal class according to EN 60034-1	F
Max. winding temperature	155 °C
Rating class according to EN 60034-1	S1
Temperature monitoring	Digital motor temperature transmission via EnDat® 2.2
Motor type as per EN 60034-7	IM B5 IM V1 IM V3
Mounting position	Any
Degree of protection	IP21
Note on degree of protection	IP21 for motor shaft without rotary shaft seal IP65 for motor shaft with rotary shaft seal IP67 for motor housing, incl. connection technology
Concentricity, coaxiality, axial runout according to DIN SPEC 42955	N
Balancing quality	G 2.5
Detent torque	< 1.0% of peak torque
Bearing lifetime, under nominal conditions	20000 h
Featherkey shaft design	DIN 6885 A 8 x 7 x 36
Interface code, motor out	150A
Electrical connection 1, connection type	Hybrid plug
Electrical connection 1, connection technology	M23x1
Electrical connection 1, number of pins/wires	15
Contamination level	2
Note on materials	RoHS-compliant
Corrosion resistance class (CRC)	0 - No corrosion stress
LABS (PWIS) conformity	VDMA24364 zone III

Feature	Value
Vibration resistance	as per EN 60068-2-6
Shock resistance	as per EN 60068-2-29 15 g/11 ms as per EN 60068-2-27
Certification	RCM compliance mark c UL us - Recognized (OL)
CE marking (see declaration of conformity)	As per EU EMC directive As per EU low voltage directive As per EU RoHS directive
UKCA marking (see declaration of conformity)	To UK instructions for EMC To UK RoHS instructions To UK instructions for electrical equipment
Certificate issuing authority	UL E342973
Nominal operating voltage DC	680 V
Type of winding switch	Star inside
Number of pole pairs	5
Stall torque	33 Nm
Nominal torque	27.1 Nm
Peak torque	64 Nm
Nominal rotary speed	1500 1/min
Max. rotational speed	2368 1/min
Max. mechanical speed	10000 1/min
Motor nominal power	4257 W
Continuous stall current	11.4 A
Motor nominal current	9.5 A
Peak current	24 A
Motor constants	2.85 Nm/A
Standstill torque constant	3.3 Nm/A
Voltage constant, phase-to-phase	199.4 mVmin
Phase-phase winding resistance	0.935 Ohm
Winding inductance phase-phase	14.6 mH
Winding longitudinal inductivity Ld (phase)	7.2 mH
Cross inductivity Lq (phase)	7.3 mH
Electric time constant	15.4 ms
Thermal time constant	45 min
Thermal resistance	0.45 K/W
Measuring flange	450 x 450 x 30 mm, steel
Total output inertia moment	38.7 kgcm ²
Product weight	18700 g
Permissible axial shaft load	294 N
Permissible radial shaft load	1470 N
Rotor position sensor	Absolute encoder, multi-turn
Rotor position sensor for manufacturer designation	EQI 1331
Rotor position encoder for absolutely detectable revolutions	4096
Rotor position sensor interface	EnDat® 22
Rotor position sensor measuring principle	Inductive
Rotor position encoder for DC operating voltage	5 V
Rotor position encoder for DC operating voltage range	3.6 V...14 V
Rotor position encoder for positional values per revolution	524288
Rotor position sensor resolution	19 bit
Rotor position encoder system accuracy angle measurement	-65 arcsec...65 arcsec
MTTF, subcomponent	190 years, rotor position sensor
Energy efficiency	ENEFF (CN) / Class 1