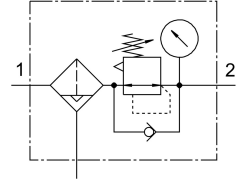


Filter regulator MS6-LFR-1/2-D6-E-P-VC-AG-BAR-B

Part number: 8098312

FESTO



Data sheet

Feature	Value
Size	6
Series	MS
Actuator lock	Rotary knob with detent
Mounting position	Vertical +/- 5°
Grade of filtration	40 µm
Condensate drain	Fully automatic Manual, non-detenting
Structural design	Filter regulator with pressure gauge Directly controlled piston regulator
Max. condensate volume	27.3 ml
Controller function	Outlet pressure constant With secondary exhausting With return flow function
Displayable unit(s)	bar psi
Pressure gauge	with pressure gauge
Operating pressure	0.2 MPa...1 MPa 2 bar...10 bar
Pressure regulation range	0.3 bar...7 bar
Max. pressure hysteresis	0.035 MPa 0.35 bar 5.075 psi
Standard nominal flow rate	5300 l/min
Operating medium	Compressed air as per ISO 8573-1:2010 [7:4:4] Inert gas
Information on operating and pilot media	Compatibility with ester oil not given
Corrosion resistance class (CRC)	1 - Low corrosion stress
LABS (PWIS) conformity	VDMA24364-B1/B2-L
Cleanroom class	Class 7 according to ISO 14644-1
Storage temperature	-5 °C...50 °C
Air quality class at the output	Compressed air as per ISO 8573-1:2010 [7:4:4]
Temperature of medium	5 °C...50 °C
Ambient temperature	5 °C...50 °C

Feature	Value
Product weight	589 g
Type of mounting	Optionally: Front panel mounting Line installation With accessories
Pneumatic connection 1	G1/2
Pneumatic connection 2	G1/2
Note on materials	RoHS-compliant
Seals material	NBR
Rotary knob material	POM
Material of spring	High-alloy steel Steel, galvanized
Compressed air filter material	PE
Housing material	PA-reinforced
Material of bowl	PC
Valve tappet material	POM