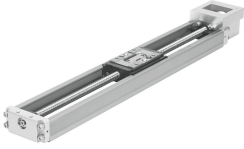


Electric linear slide EGSK-26-200-6P

Part number: 562771

FESTO



Data sheet

| Feature | Value |
|--|---|
| Working stroke | 200 mm |
| Size | 26 |
| Reversing backlash | 20 µm |
| Screw diameter | 8 mm |
| Spindle pitch | 6 mm/U |
| Mounting position | Any |
| Guide | Recirculating ball bearing guide |
| Structural design | Electromechanical linear axis with ball screw drive |
| Homing | Reference switch |
| Spindle type | Ball screw drive |
| Max. acceleration | 10 m/s ² |
| Max. speed | 0.59 m/s |
| Repetition accuracy | ±0.01 mm |
| Corrosion resistance class (CRC) | 0 - No corrosion stress |
| LABS (PWIS) conformity | VDMA24364 zone III |
| Degree of protection | IP10 |
| Ambient temperature | 0 °C...40 °C |
| Fixed bearing dynamic basic load rating | 1380 N |
| Linear guide dynamic basic load rating | 5746 N |
| Dynamic basic load rating, ball screw drive | 1950 N |
| 2nd moment of area Iy | 17000 mm ⁴ |
| 2nd moment of area Iz | 150000 mm ⁴ |
| Max. driving torque | 0.11 Nm |
| Max. force Fy | 1541 N |
| Max. force Fz | 1541 N |
| Max. torque Mx | 26.2 Nm |
| Max. torque My | 8.9 Nm |
| Max. torque Mz | 8.9 Nm |
| Max. feed force Fx | 116 N |
| No-load driving torque | 0.015 Nm |
| Ball screw drive statistical basic load rating | 3510 N |

| Feature | Value |
|---|------------------------------------|
| Linear guide statistical basic load rating | 12150 N |
| Mass moment of inertia JH per meter of stroke | 0.0316 kgcm ² |
| Mass moment of inertia JO | 0.00481 kgcm ² |
| Feed constant | 6 mm/U |
| Statistical fixed bearing load rating | 1760 N |
| Reference service life | 3000 km |
| Moving mass | 153 g |
| Slide weight | 153 g |
| Product weight | 1620 g |
| Additional slide weight | 153 g |
| Basic weight with 0 mm stroke | 780 g |
| Additional weight per 10 mm stroke | 42 g |
| Type of mounting | With internal thread and dowel pin |
| Material of end caps | Die-cast aluminum Coated |
| Profile material | High-alloy stainless steel |
| Note on materials | RoHS-compliant |
| Drive cover material | Die-cast aluminum Coated |
| Slide material | Steel |
| Spindle nut material | Steel |
| Spindle material | Steel |