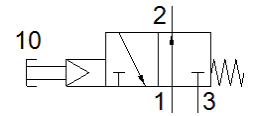
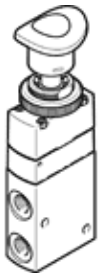


Push-button valve VHEM-PTC-M32U-M-G18

Part number: 558425

FESTO



Data sheet

Feature	Value
Valve function	3/2 open, monostable
Type of actuation	manual
Width	20 mm
Standard nominal flow rate	500 l/min
Working pressure	4.5 ... 8 bar
Design structure	Poppet seat
Type of reset	mechanical spring
Nominal size	4 mm
Instructions for use	Actuate only manually
Type of piloting	Piloted
Pilot air supply	Internal
Operating medium	Compressed air in accordance with ISO8573-1:2010 [7:::]
Note on operating and pilot medium	Lubricated operation possible (subsequently required for further operation)
Corrosion resistance classification CRC	2 - Moderate corrosion stress
Medium temperature	-10 ... 60 °C
Ambient temperature	-10 ... 60 °C
Actuating force	46 N
Product weight	198 g
Mounting type	Optional Front panel installation with through hole
Pilot air port 12	M5
Pneumatic connection, port 1	G1/8
Pneumatic connection, port 2	G1/8
Pneumatic connection, port 3	G1/8
Materials note	Conforms to RoHS
Material seals	NBR
Material housing	Wrought Aluminum alloy Anodized