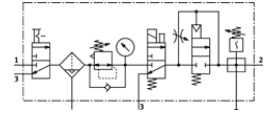
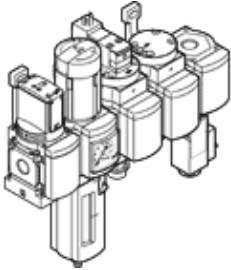


# Service unit combination MSB4-1/4:C3J2D7A1F3-WP

Part number: 542621

FESTO

Comprising on-off valve, filter regulator, electrical on-off valve, pneumatic soft-start valve, branching module with pressure switch but without display, wall mounting plate. Maximum output pressure 9 bar, 40 µm filter, with pressure gauge, lockable regulator head, plastic bowl with plastic bowl guard, fully automatic condensate drain, flow direction from left to right.



## Data sheet

| Feature                                 | Value  |
|---|--|
| Size                                    | 4  |
| Series                                  | MS   |
| Actuator lock                           | Rotary knob with lock<br>with accessories, lockable  |
| Assembly position                       | Vertical +/- 5°  |
| Grade of filtration                     | 40 µm  |
| Condensate drain                        | fully automatic  |
| Design structure                        | Branching module<br>On/off valve<br>Filter regulator with pressure gauge<br>Standard oil-mist lubricator     |
| Controller function                     | Output pressure constant<br>with initial pressure compensation<br>with secondary exhaust<br>with return flow |
| Bowl guard                              | Plastic guard  |
| Pressure gauge                          | with pressure gauge  |
| Working pressure                        | 4.5 ... 10 bar   |
| Pressure control range                  | 4 ... 9 bar  |
| Standard nominal flow rate              | 750 l/min  |
| Characteristic coil data                | 24V DC   |
| Operating medium                        | Compressed air in accordance with ISO8573-1:2010 [7:4:4]<br>Inert gases                                      |
| Note on operating and pilot medium      | Lubricated operation possible (subsequently required for further operation)                                  |
| Corrosion resistance classification CRC | 2  |
| Storage temperature                     | -10 ... 60 °C  |
| Air purity class at output              | Compressed air in accordance with ISO8573-1:2010 [7:4:4]   |
| Medium temperature                      | -10 ... 50 °C  |
| Ambient temperature                     | -10 ... 50 °C  |
| Product weight                          | 2,200 g  |
| Mounting type                           | with accessories   |
| Pneumatic connection, port 1            | G1/4   |
| Pneumatic connection, port 2            | G1/4   |
| Pneumatic connection, port 3            | G1/4   |
| Materials information, housing          | Aluminum die cast  |
| Materials information for bowl          | PC   |