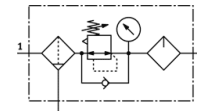
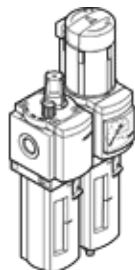


# Service unit combination MSB6-1/4-FRC9:J11M2-Z

Part number: 530277

FESTO

Filter-regulator-lubricator combination, 12 bar maximum output pressure, 40 µm filter, with pressure gauge, lockable regulator head, metal bowl, manual condensate drain, direction of flow: from right to left.



## Data sheet

| Feature                                 | Value  |
|---|--|
| Size                                    | 6  |
| Series                                  | MS   |
| Actuator lock                           | Rotary knob with integrated lock   |
| Assembly position                       | Vertical +/- 5°  |
| Condensate drain                        | manual rotary  |
| Design structure                        | Filter regulator with pressure gauge<br>proportional standard mist lubricator                                |
| Grade of filtration                     | 40 µm  |
| Controller function                     | Output pressure constant<br>with initial pressure compensation<br>with secondary exhaust<br>with return flow |
| Bowl guard                              | integrated as metal shell  |
| Pressure gauge                          | with pressure gauge  |
| Working pressure                        | 1.5 ... 20 bar   |
| Pressure control range                  | 0.5 ... 12 bar   |
| Standard nominal flow rate              | 1,900 l/min  |
| Operating medium                        | Compressed air to ISO 8573-1:2010 [-:4:-]<br>Inert gases   |
| Note on operating and pilot medium      | Lubricated operation possible (subsequently required for further operation)                                  |
| Corrosion resistance classification CRC | 2  |
| Storage temperature                     | -10 ... 60 °C  |
| Air purity class at output              | Compressed air in accordance with ISO8573-1:2010 [7:4:-]   |
| Medium temperature                      | -10 ... 60 °C  |
| Ambient temperature                     | -10 ... 60 °C  |
| Product weight                          | 1,713 g  |
| Mounting type                           | with accessories   |
| Pneumatic connection, port 1            | G1/4   |
| Pneumatic connection, port 2            | G1/4   |