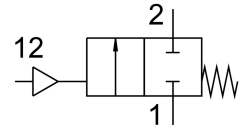


Angle seat valve VZXF-L-M22C-M-A-G34-180-V4B2V-50-V

Part number: 3536650

FESTO



Data sheet

Feature	Value
Structural design	Poppet valve with piston actuator
Actuation type	Pneumatic
Sealing principle	Soft
Mounting position	Any
Type of mounting	Line installation
Cable connection	Threaded sleeve G3/4 as per DIN ISO 228
Nominal width	18 mm
Valve function	2/2, closed, monostable
Flow direction	Non-reversible Above valve seat, for gaseous media
Medium pressure	-0.09 MPa...0 MPa -0.9 bar...0 bar
Nominal pressure of fitting PN	40
Exhaust air function	Without flow control option
Reset method	Mechanical spring
Type of control	Externally controlled
Pneumatic connection	Internal thread G1/8
Operating pressure	0.6 MPa...1 MPa 6 bar...10 bar 87 psi...145 psi
Medium	Vapor Inert gas Filtered compressed air, 200 µm filter mesh
Operating medium	Compressed air as per ISO 8573-1:2010 [7:4:4]
Max. viscosity	600 mm ² /s
Temperature of medium	-10 °C...80 °C
Ambient temperature	-10 °C...60 °C
Flow rate Kv	7.5 m ³ /h
Note on materials	RoHS-compliant
LABS (PWIS) conformity	VDMA24364 zone III
Valve housing material	Cast stainless steel
Material number, fitting housing	1.4408
Spindle seal material	FPM

Feature	Value
Seat seal material	FPM
Product weight	1400 g
Corrosion resistance class (CRC)	2 - Moderate corrosion stress
Drive housing material	Brass, nickel-plated