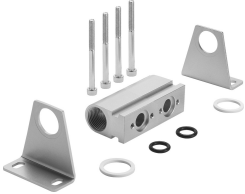


Common supply manifold PAL-1/4-2-B

Part number: 30280

FESTO



Data sheet

Feature	Value
Mounting position	Any
Max. no. of valve positions	2
LABS (PWIS) conformity	VDMA24364-B1/B2-L
Product weight	230 g
Type of mounting	With mounting bracket
Pneumatic connection 1	G1/2
Note on materials	RoHS-compliant
Material of sub-base	Aluminum Anodized