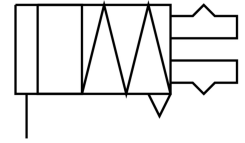
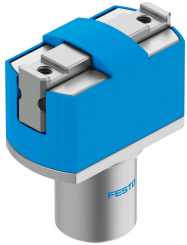


# Parallel gripper HGPM-12-EZ-G8

Part number: 197569

FESTO



## Data sheet

| Feature  | Value  |
|--|--|
| Size   | 12   |
| Stroke per gripper jaw                           | 3 mm   |
| Max. interchangeability                          | 0.2 mm   |
| Rotational symmetry                              | 0.15 mm  |
| Pneumatic gripper repetition accuracy            | 0.05 mm  |
| Number of gripper jaws                           | 2  |
| Actuator system                                  | Pneumatic  |
| Mode of operation                                | Single-acting<br>Closed  |
| Gripper function                                 | Parallel   |
| Gripping force backup                            | Without  |
| Structural design                                | Inclined plane   |
| Position sensing                                 | None   |
| Gripping force per gripper jaw at 6 bar, closing | 35 N   |
| Operating pressure                               | 4 bar...8 bar  |
| Max. operating frequency of pneumatic gripper    | 4 Hz   |
| Min. opening time at 6 bar                       | 3 ms   |
| Min. closing time at 6 bar                       | 8.3 ms   |
| Operating medium                                 | Compressed air as per ISO 8573-1:2010 [7:4:4]                      |
| Information on operating and pilot media         | Operation with oil lubrication possible (required for further use) |
| Corrosion resistance class (CRC)                 | 1 - Low corrosion stress   |
| LABS (PWIS) conformity                           | VDMA24364-B2-L   |
| Ambient temperature                              | 5 °C...60 °C   |
| Gripping force per gripper jaw at 6 bar, opening | 17.5 N   |
| Maximum force on gripper jaw Fz, static          | 30 N   |
| Maximum torque on gripper jaw, Mx static         | 0.5 Nm   |
| Maximum torque on gripper jaw, My static         | 0.5 Nm   |
| Maximum torque on gripper jaw, Mz static         | 0.5 Nm   |
| Product weight                                   | 41 g   |
| Type of mounting                                 | Clamped  |
| Pneumatic connection                             | M3   |
| Note on materials                                | RoHS-compliant   |

| <b>Feature</b>       | <b>Value</b>                     |
|----------------------|----------------------------------|
| Cover cap material   | POM                              |
| Housing material     | Wrought aluminum alloy, anodized |
| Gripper jaw material | High-alloy steel                 |