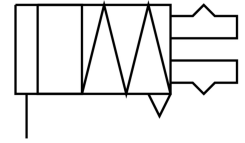


Angled gripper HGWM-12-EZ-G7

Part number: 185703

FESTO



Data sheet

Feature	Value
Size	12
Max. gripper jaw angular play ax, ay	0.5 deg
Max. gripper jaw backlash Sz	0.03 mm
Max. opening angle	14 deg
Pneumatic gripper repetition accuracy	0.02 mm
Number of gripper jaws	2
Mode of operation	Single-acting Closed
Gripper function	Angle
Structural design	Inclined plane
Position sensing	None
Operating pressure	2 bar...8 bar
Max. operating frequency of pneumatic gripper	4 Hz
Min. opening time at 6 bar	1.7 ms
Min. closing time at 6 bar	2.8 ms
Operating medium	Compressed air as per ISO 8573-1:2010 [7:-:-]
Corrosion resistance class (CRC)	2 - Moderate corrosion stress
LABS (PWIS) conformity	VDMA24364-B2-L
Ambient temperature	5 °C...60 °C
Spring return torque	1,5 Ncm
Total gripping torque at 0.6 MPa (6 bar, 87 psi), opening	76 Ncm
Maximum force on gripper jaw Fz, static	20 N
Maximum torque on gripper jaw, Mx static	40 Ncm
Maximum torque on gripper jaw, My static	40 Ncm
Maximum torque on gripper jaw, Mz static	40 Ncm
Product weight	52 g
Type of mounting	With lock nut
Pneumatic connection	M3
Cover cap material	POM
Housing material	High-alloy stainless steel
Gripper jaw material	High-alloy steel