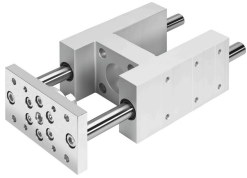


# Guide unit EAGF-V2-KF-100-100

Part number: 1725850

FESTO



## Data sheet

| Feature  | Value                              |
|--|------------------------------------|
| Size   | 100                                |
| Stroke   | 100 mm                             |
| Reversing backlash                                 | 0 µm                               |
| Mounting position                                  | Any                                |
| Guide  | Recirculating ball bearing guide   |
| Structural design                                  | Guide                              |
| Corrosion resistance class (CRC)                   | 0 - No corrosion stress            |
| LABS (PWIS) conformity                             | VDMA24364-B2-L                     |
| Ambient temperature                                | -20 °C...80 °C                     |
| Max. force Fy                                      | 2300 N                             |
| Max. force Fy static                               | 3120 N                             |
| Max. force Fz                                      | 2300 N                             |
| Max. force Fz static                               | 3120 N                             |
| Max. torque Mx                                     | 198 Nm                             |
| Max. static moment Mx                              | 268 Nm                             |
| Max. torque My                                     | 197 Nm                             |
| Max. static moment My                              | 267 Nm                             |
| Max. torque Mz                                     | 197 Nm                             |
| Max. static moment Mz                              | 267 Nm                             |
| Displacement force                                 | 40 N                               |
| Moving mass  | 6892 g                             |
| Product weight                                     | 14023 g                            |
| Center of gravity of moving mass with 0 mm stroke  | 47 mm                              |
| Center of gravity of moving mass with 10 mm stroke | 3.6 mm                             |
| Type of mounting                                   | With internal thread               |
| Note on materials                                  | RoHS-compliant                     |
| Material of guide component                        | Tempered steel                     |
| Housing material                                   | Wrought aluminum alloy<br>Anodized |
| Material of yoke plate                             | Steel                              |