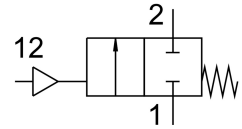


Angle seat valve VZXF-L-M22C-M-A-G114-310-M1-V4V4T-80-16

Part number: 1002527

FESTO



Data sheet

| Feature | Value |
|----------------------------------|---|
| Structural design | Poppet valve with piston actuator |
| Actuation type | Pneumatic |
| Sealing principle | Soft |
| Mounting position | Any |
| Type of mounting | Line installation |
| Cable connection | Threaded sleeve G1 1/4 as per DIN ISO 228 |
| Nominal width | 31 mm |
| Valve function | 2/2, closed, monostable |
| Flow direction | Non-reversible Above valve seat, for gaseous media |
| Medium pressure | 0 MPa...1.6 MPa 0 bar...16 bar |
| Nominal pressure of fitting PN | 40 |
| Exhaust air function | Without flow control option |
| Reset method | Mechanical spring |
| Type of control | Externally controlled |
| Pneumatic connection | Internal thread G1/8 |
| Operating pressure | 0.6 MPa...1 MPa 6 bar...10 bar 87 psi...145 psi |
| Medium | Vapor Inert gas Filtered compressed air, 200 µm filter mesh |
| Operating medium | Compressed air as per ISO 8573-1:2010 [7:4:4] |
| Max. viscosity | 600 mm ² /s |
| Temperature of medium | -40 °C...200 °C |
| Ambient temperature | -10 °C...60 °C |
| Flow rate Kv | 19 m ³ /h |
| Note on materials | RoHS-compliant |
| LABS (PWIS) conformity | VDMA24364 zone III |
| Valve housing material | Cast stainless steel |
| Material number, fitting housing | 1.4408 |
| Spindle seal material | PTFE |

| Feature | Value |
|--|--|
| Seat seal material | PTFE |
| Product weight | 3800 g |
| CE marking (see declaration of conformity) | as per EU pressure equipment directive |
| UKCA marking (see declaration of conformity) | according to UK regulations for pressure equipment |
| Corrosion resistance class (CRC) | 3 - High corrosion stress |
| Drive housing material | High-alloy stainless steel |