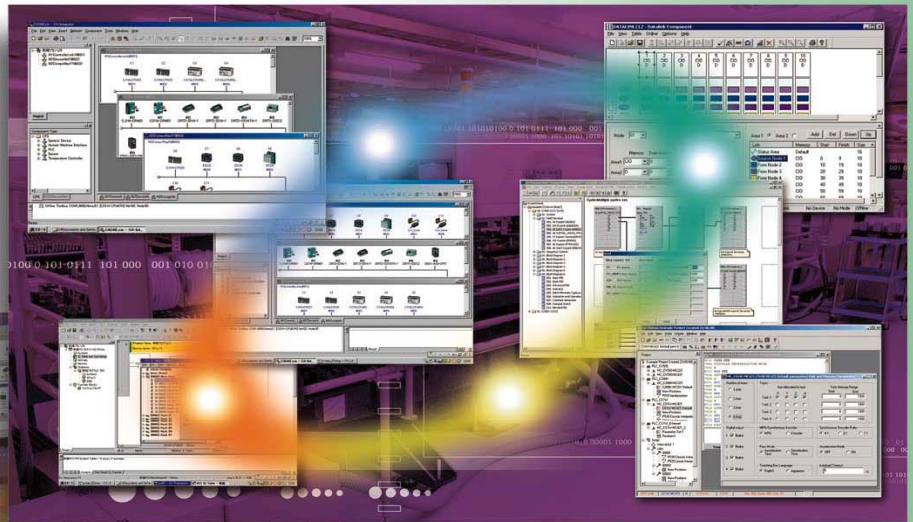




FA Integrated Tool Package

CX-One Introduction Guide



Introduction

- Please be sure to read and understand Precautions and Introductions in *CX-One Setup Manual*, *CX-Programmer Operation Manual* and *CX-Integrator Operation Manual* before using the product.
- This Guide describes the basic operation procedure of CX-Programmer. Refer to the Help or the Operation Manual of the PDF file for detailed descriptions.
- Acrobat Reader 5.0 or later is required to read the PDF files.
- You can display the PDF files from the [Start] menu on your desktop after installing the CX-Programmer.
- The screen views used in this guide may be different from the actual view, and be subject to change without notice.
- The product names, service names, function names, and logos described in this guide are trademarks or registered trademarks of their respective companies.
- The symbols (R) and TM are not marked with trademarks and registered trademarks in this guide respectively
- The product names of the other companies may be abbreviated in this guide.

Chapter 1 Overview and Installation of CX-One

1. What is CX-One?	1-1
2. Features of CX-One	1-1
3. Integrated Simulation	1-2
4. CX-One Installation Procedure	1-4

Chapter 2 Example of PLC System Construction by CX-One

Workflow in This Chapter	2-1
1. Design	
1-1. Starting CX-Programmer	2-2
1-2. Creating Unit Configuration	2-3
1-3. Setting CPU Bus Units and Special I/O Units	2-5
1-4. Checking I/O Assignment	2-9
1-5. Programming	2-10
1-6. Offline Debug	2-12
1-7. Saving a Project	2-13
2. Online Debug on a Machine	
2-1. Reading a Project	2-14
2-2. Online Connection to PLC	2-15
2-3. Transferring to a Machine	2-16
2-4. Program Debug	2-21
3. Start-Up / Adjustment On-site	
3-1. Program Modification	2-23
3-2. Unit Parameter Change	2-25

Chapter 3 Example of PLC Network System Construction by CX-One

Workflow in This Chapter	3-1
1. PLC Network Start-Up	
1-1. PLC Start-Up	3-2
1-2. DeviceNet Start-Up	3-6
1-3. NT Link Start-Up	3-8
1-4. Controller Link Start-Up	3-10
1-5. CompoWay/F Start-Up	3-12
1-6. Saving System Configuration	3-15
2. Adjustment On-site	
2-1. System Configuration Verification	3-17
2-2. Controller Link Diagnosis	3-19
2-3. Checking CompoNet Network	3-20
3. Servo/Inverter Settings	
3-1. DeviceNet Connection	3-22
3-2. RS232C Connection	3-23

Chapter 1

Overview and Installation of CX-One

CX-One

1. What is CX-One?

CX-One is an FA Integrated Tool Package that integrates Support Software for OMRON's PLC and other Components.

To construct an FA System based mainly on PLC, traditionally it was necessary to purchase and install individual Support Software compatible with each Unit, start the software individually, and then connect to PLC and individual Components.

Installation of this FA Integrated Tool Package "CX-One" on a personal computer allows integrated operation from setup of OMRON's CPU Bus Units and Special I/O Units (SIU) and Components to network start-up/monitoring and improving efficiency of PLC System start-up.

2. Features of CX-One

- CX-One allows integrated management of Support Software for OMRON's PLC/Components.
 - Installation on only one personal computer allows a user to handle Support Software for OMRON's products.
 - Only one licensing key is required to install all Support Software.
 - It allows integrated management of one save location for files created by Support Software.
- Support Software dedicated to CPU Bus Units and Special I/O Units can be started on the I/O Table.
 - The appropriate dedicated Support Software can be automatically started by specifying a registered Unit in the I/O Table (Unit configuration table attached to a PLC). In addition, setup information such as PLC model can be passed to the dedicated Support Software at start-up, allowing easier switching between Support Software.
- The following functions are available by the introduction of the ID information file (CPS) for OMRON Components.
 - Setup of CPU Bus Units and Special I/O Units without manual setting and address recognition. (Parameter and selection item names as well as available range of setup are automatically displayed)
 - CPU Bus Units and Special I/O Units setting on personal computer and data on actual PLC (CPU Unit) can be verified online, and unmatched item/readout data is displayed graphically.
 - Unit configuration is displayed on the I/O Table based on Unit model.
 - Device type on the network can be checked for its Unit model, allowing exact verification of network configuration.

What is CPS?

CPS (Component and network Profile Sheet) is definition information of CS/CJ series Unit/Components in CX-One. It is provided as a CPS file (XML format file).

CX-One recognizes CS/CJ series Unit by information in this CPS file. CPU Bus Units and Special I/O Units setting is created based on this CPS file.

3. Integrated Simulation

Integrated Simulation Overview:

Integrated Simulation is a function of CX-One (version 2.0 or higher) that simultaneously tests interoperability between the ladder program and PT (touch panel) and checks screen operation on the computer.

Earlier Versions:

Operation checks had to be performed separately on the ladder program and PT (touch panel) screens. In addition, the program had to be downloaded to the devices.



Using Integrated Simulation:

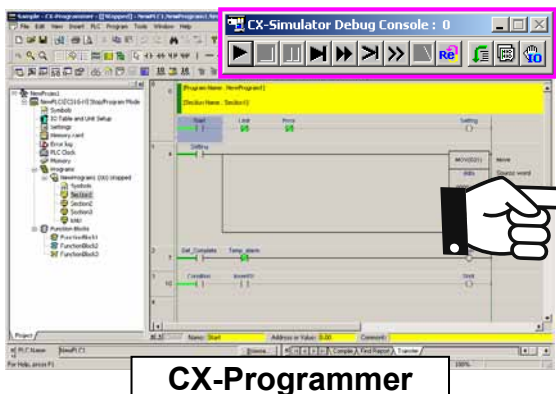
Provides an interoperability check between the ladder program and touch panel screens.

- Operation can be verified before actual devices such as the PLC and PT (touch panel) are installed and wired, so software quality can be improved in the design stage.
- Time can be saved by eliminating the tasks up to downloading the screen data from the computer to the PT.
- The operation of both the PLC and PT (touch panel) can be verified simultaneously in the computer, which greatly reduces the time required for debugging and equipment downtime during improvements.

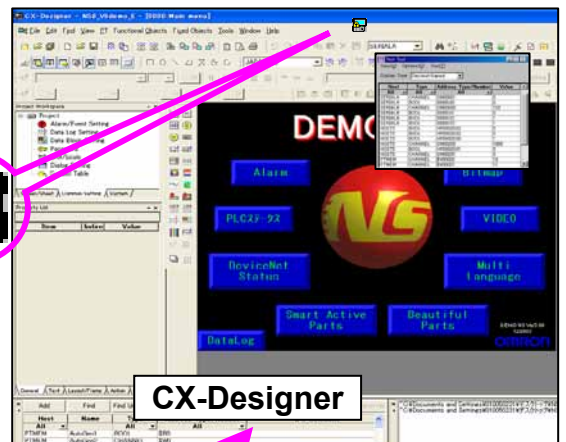
Simulation of the PLC – PT (touch panel) system can be started easily, with one click of an icon.

Ladder program

Touch panel screen



One click

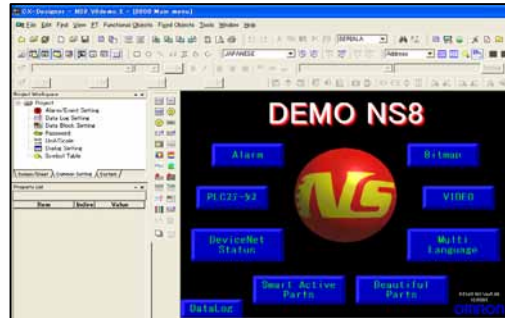


Linked and simulation started.

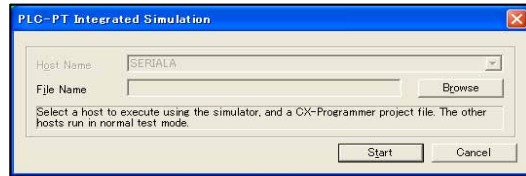
Integrated Simulation Procedure

Use the following procedure to execute an integrated simulation of the ladder program and PT (touch panel) screen. For details, refer to the *CX-Designer Operation Manual* and *CX-Programmer Operation Manual*.

1. Create the screen data in the CX-Designer.



2. Click the  icon or select **Tools – Integrated Simulation**. The PLC-PT Integrated Simulation Dialog Box will be displayed.



3. Click the **Browse** Button and select the desired ladder program (XCP) file.

4. Click the **Start** Button. The PLC-PT Integrated Simulation will start automatically.

5. The test window will be displayed.

The Test Tool Window will list all of the communications addresses being used in the displayed screen. For example, when “Host SERIAL A” is connected to the CX-Simulator, the CX-Simulator value is reflected in the SERIAL A communications address. (The values can also be changed.)



Host	Type	Address	Type/Number	Value
All	All	All		
SERIALA	CHANNEL	DM00001		0
SERIALA	BOOL	0000000		0
SERIALA	CHANNEL	DM00000		123
SERIALA	BOOL	0000001		0
SERIALA	BOOL	0000002		1
SERIALA	BOOL			

Test Tool

Test Window

4. CX-One Installation Procedure

Before installing the CX-One, you must:

- Terminate all Windows programs
- Uninstall previous versions of Support Software (such as CX-Programmer) if already installed.
- Installation takes about 10 to 40 minutes depending on your personal computer. (10 minutes for a personal computer with CPU: Celeron 2.2GHz, main memory: 512MB, and CD-ROM drive: 48x)
- To change/modify/delete CX-One after installation, refer to the PDF manual "CX-One Setup Manual", Chapter 2 "Installation and Uninstallation".

Installing CX-One

In case of the installing procedure by CD-ROM:

Insert CX-One installation disk 1 (CD-ROM) into your personal computer's CD-ROM drive. [Choose Setup Language] dialog box is displayed. By default the OS language installed on your personal computer is automatically selected.

Check if the language is appropriate, then click the [OK] button.

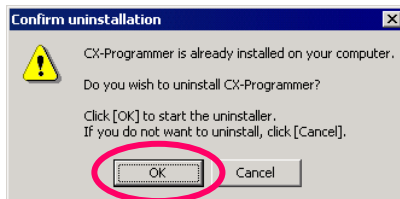


Click [OK]

The CX-One splash screen is displayed and CX-One installation starts.

Uninstall older version of tools such as PLC Tools (PLC System setting and I/O Table), CX-Server, and CX-Programmer if they have been installed.

Always click [OK]

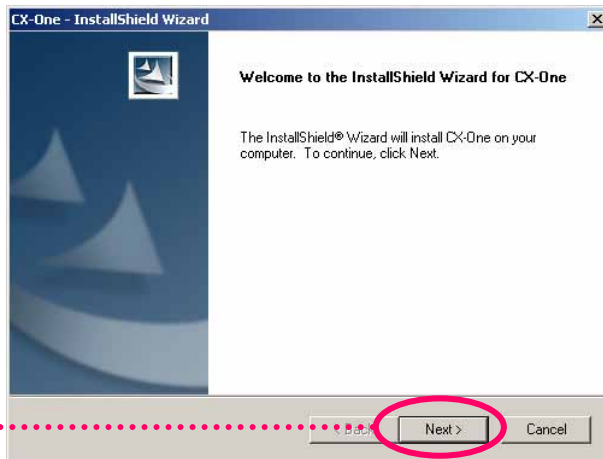


Uninstalling CX-Programmer



Uninstalling CX-Server

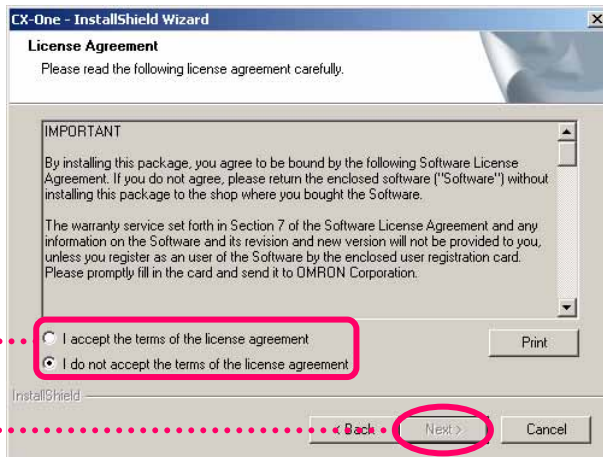
CX-One setup wizard starts.



Click [Next]

The [License Agreement] dialog box is displayed.

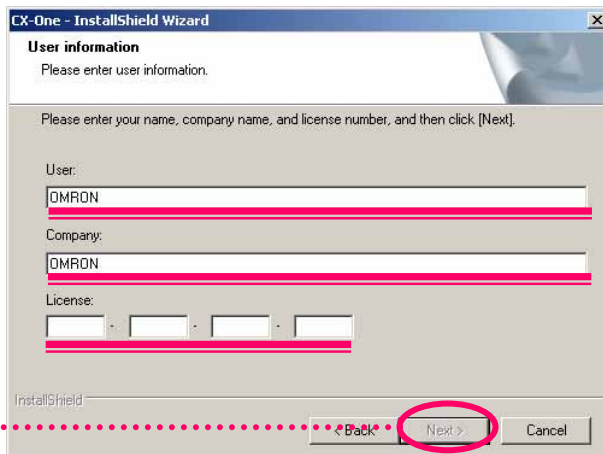
Read the software license agreement carefully. If you agree with all items, select the [I accept the terms of the license agreement] radio button and click the [Next] button.



Select the radio button

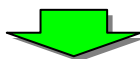
Click [Next]

The [User information] dialog box is displayed.



Enter [User], [Company], [License] (product serial number of CX-One)

Click [Next]



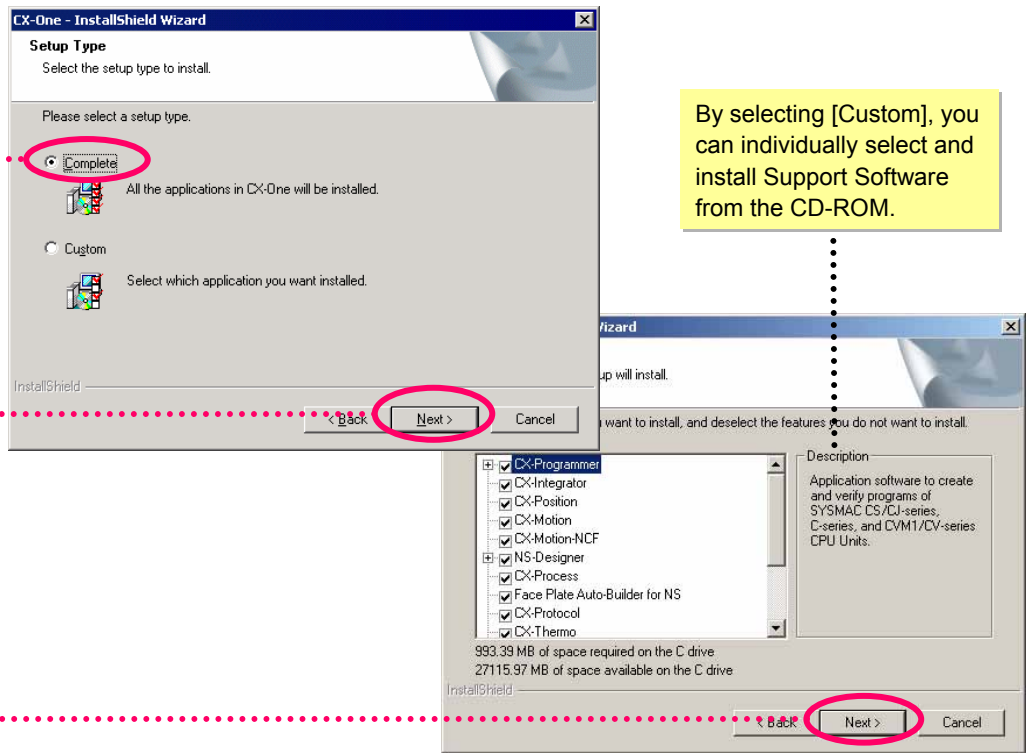
Select an installation folder, then click [Next]

Select the radio button [Complete]

Click [Next]

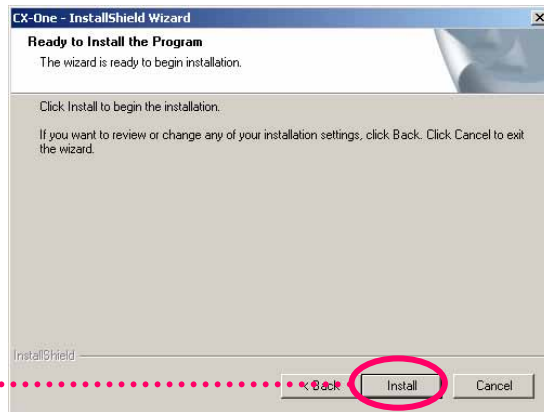
Read the message and click [Next]

The [Installation Folder Selection] dialog box and [Setup Type] dialog box are displayed.

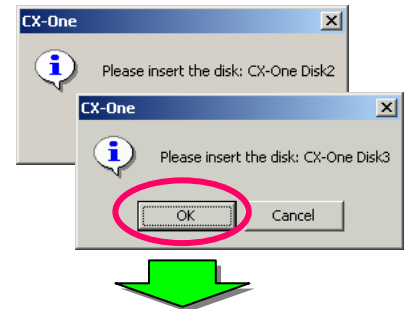


The [Program Folder Selection], [Choose Destination Location of OMRON FB Library], [Select Program Folder], and [Ready to Install the Program] dialog boxes are displayed.

Click [Install]



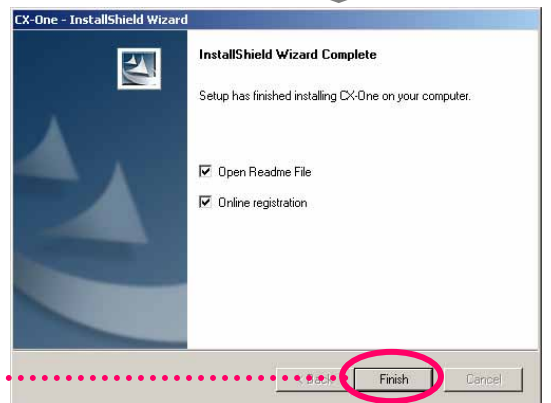
Insert CX-One Disks 2 and 3 then click the [OK] button.



CX-One installation is starts.

A dialog box (right) is displayed. Click the [Finish] button to finish the installation wizard. Installation is complete. (When it is necessary to restart the personal computer, a restart confirmation dialog box appears.)

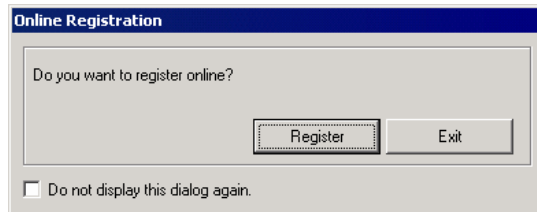
Click [Finish]



Online Registration

If the personal computer that the software has been installed on has an Internet connection, you can proceed to online user registration.

After installation has been completed the [Online Registration] dialog box is displayed.



If you click the [Register] button, your Web browser connects to "OMRON's CX-One Web site".(*1) (*2)

*1: If you click the [Exit] button to cancel online registration, the [Online Registration] dialog box is displayed every time the CX-One Support Software is started.

*2: If you do not have an Internet connection, or you do not want to register online, fill out and send the user registration card that comes with the product.

Chapter 2

Example of PLC System Construction by CX-One

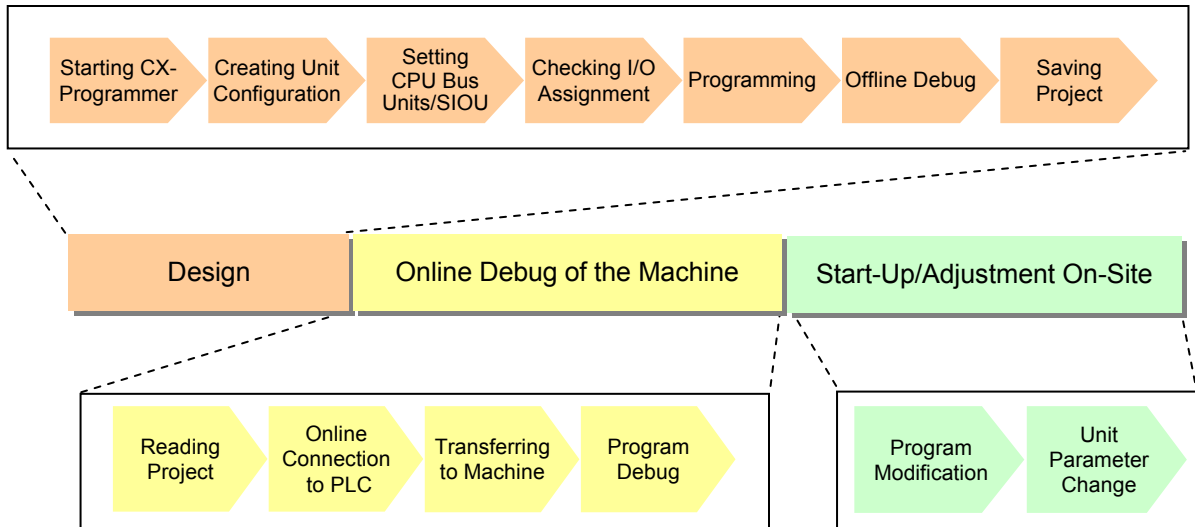
CX-One

Example of PLC System Construction by CX-One

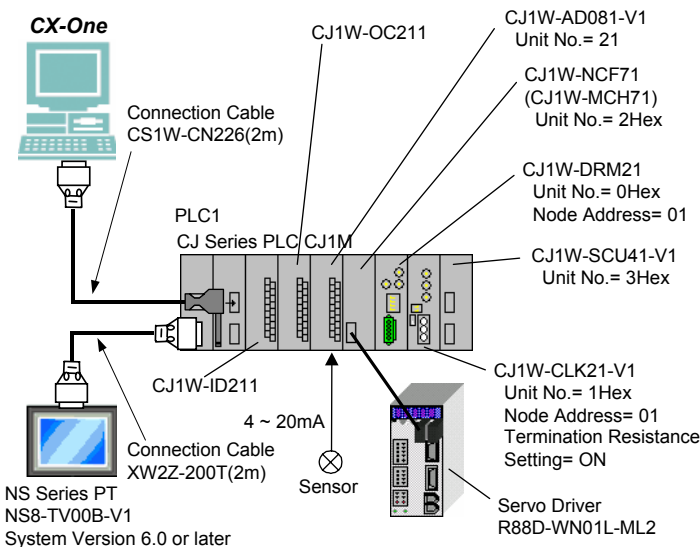
Workflow in This Chapter

This chapter describes an example of PLC System construction from design, online debugging on the actual machine, and start-up/adjustment on-site as shown below.

CX-Programmer is used for ladder program creation and CPU Bus Units and Special I/O Units (SIOU) setting, while CX-Designer is used for indicator screen generation. Also, a program simulation Support Software CX-Simulator is used as a debugging example.



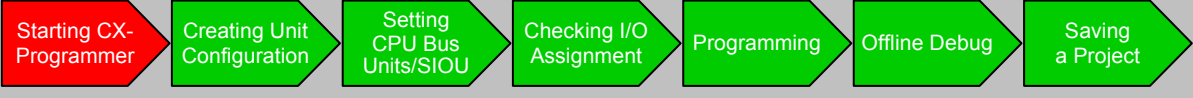
System Configuration



Unit Name	Model	Specifications
Power Unit	CJ1W-PA202	
CPU Unit	CJ1M-CPU13	640 points, 20K steps
DC Input Unit	CJ1W-ID211	
Transistor Output Unit	CJ1W-OC211	
Analog Input Unit	CJ1W-AD081-V1	4 analog inputs (Each point selectable from 1~5V, 0~5V, 0~10V, -10~10V, 4~20mA)
Position Control Unit Motion Control Unit	CJ1W-NCF71 CJ1W-MCH71	Maximum control: 16 axis Maximum control: 30 axis
DeviceNet Master Unit	CJ1W-DRM21	
ControllerLink Unit	CJ1W-CLK21	
Serial Communications Unit	CJ1W-SCU41-V1	
Servo Driver	R88D-WN01L-ML2	
NS Series PT	NS8-TV00B-V1	8 inches TFT

Below is an example of a System that has CJ1M CPU Unit with basic input/output Unit as well as analog input Unit and NCF Unit to perform the following functions:

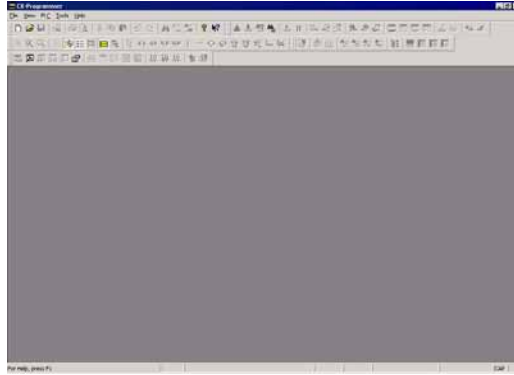
- 4~20mA input from a sensor
- Configure a servo driver connected to the NFC Unit.



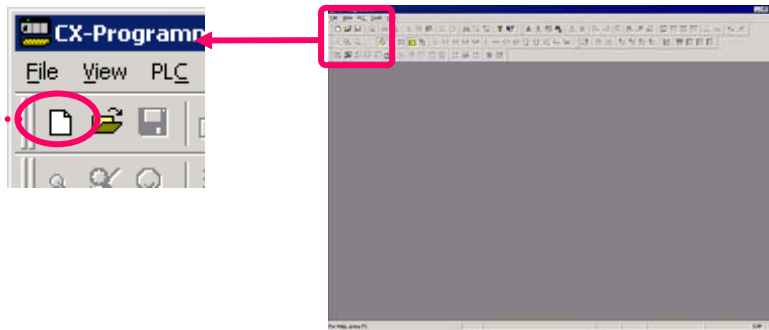
Starting CX-Programmer

Starting CX-Programmer

From the [Start] menu, select [Programs] > [OMRON] > [CX-One] > [CX-Programmer] > [CX-Programmer] to start CX-Programmer. (Or select [All Programs] > [OMRON] > [CX-One] > [CX-Programmer] > [CX-Programmer])



Click this button to create a new CX-Programmer project.

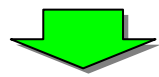



Creating a New Project

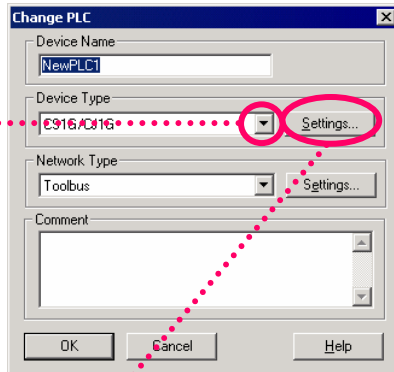
Click 



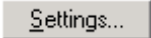
Dedicated Support Software for each Unit can be started, succeeding communications settings from CX-Programmer. You will not have to set up communications using dedicated Support Software if you set up communications here.

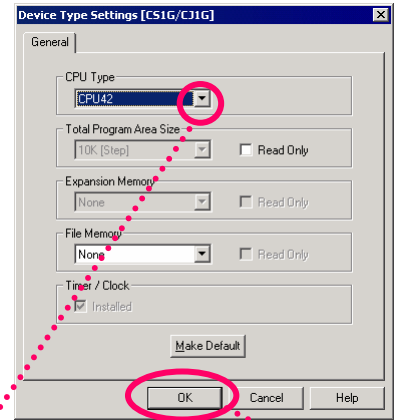



Click  and select PLC model.

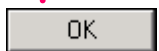


Left-click





Click  and select CPU type.

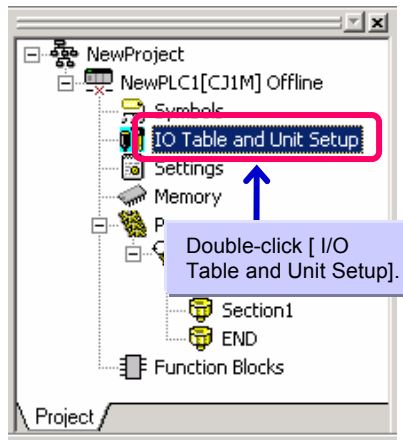


Select a PLC model from the following to use Function Blocks.
CJ2H, CS1G-H, CS1H-H, CJ1G-H, CJ1H-H, CJ1M

Click [OK] and determine CPU type.

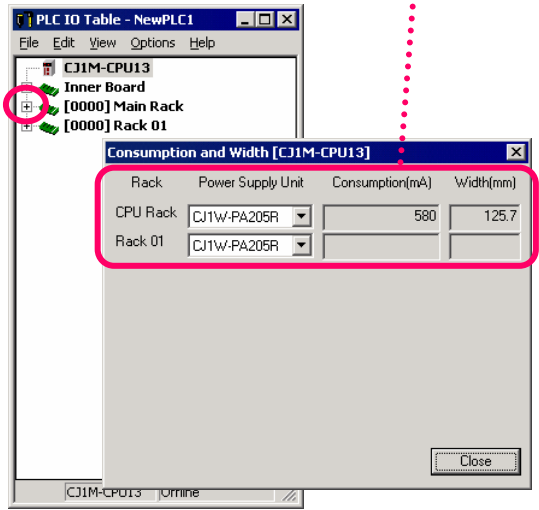
Creating Unit Configuration

Start the I/O Table/Unit setup function.

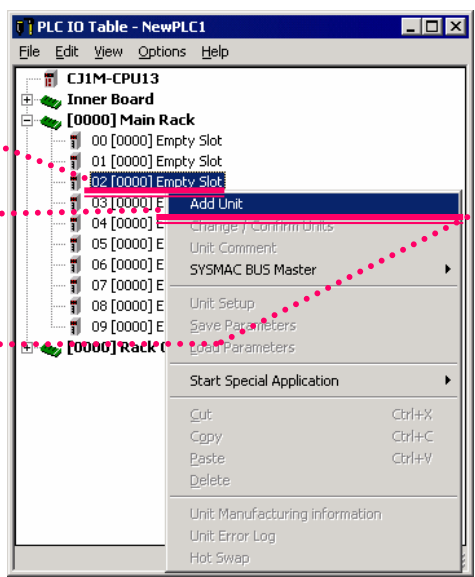


Double-click [I/O Table and Unit Setup]

When you select [Option] > [Consumption(mA)] from the menu, you can check the width and current consumption after PLC Unit configuration. (Width indication is available only for SYSMAC CJ Series)



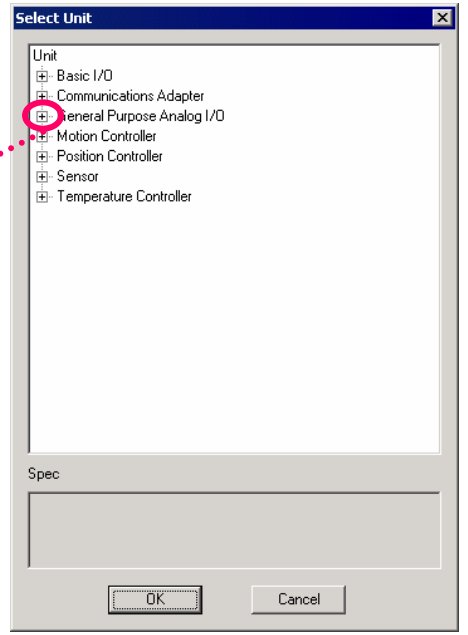
Right-click Empty Slot, select [Add Unit] and determine CPU type. Then select [General Purpose Analog I/O] from Unit selection window.



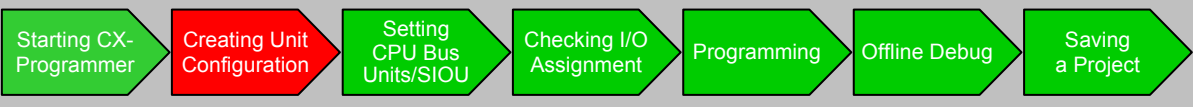
Right-click

Select [Add Unit]

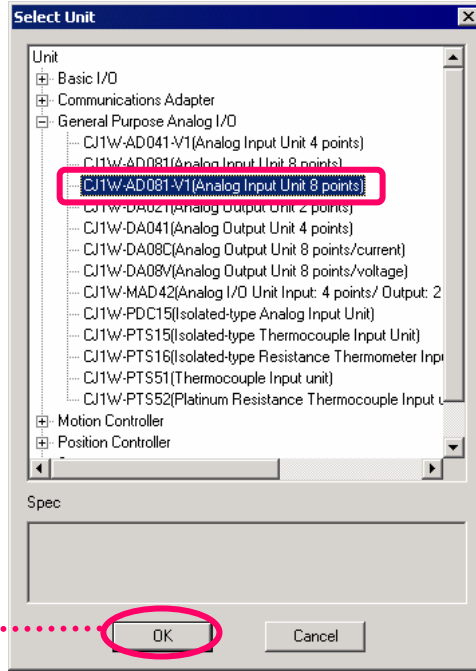
Click + symbol on analog I/O



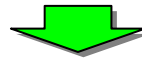
OK Cancel



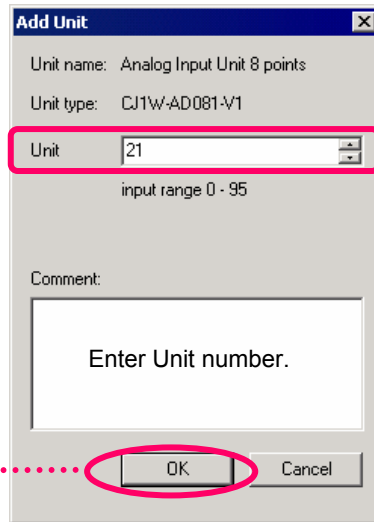
Select Unit Type.



Click OK

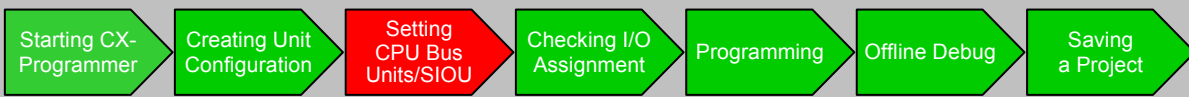


Select Unit and Number.

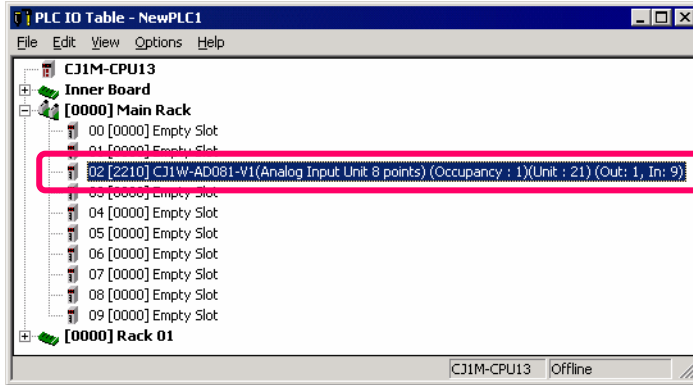


Click OK



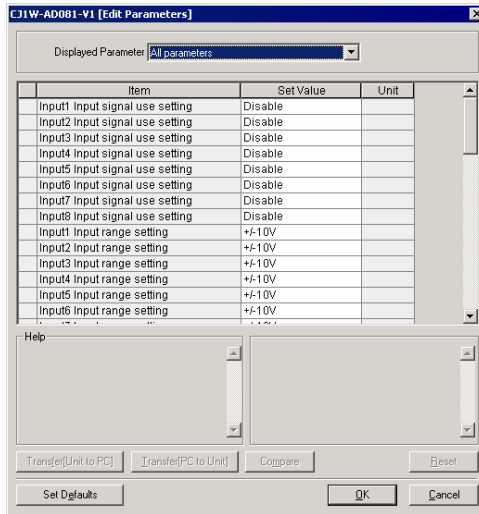


The Analog Unit is registered to the I/O Table as shown below.
Set up the next analog Unit's parameter.



Double-click the analog Unit

The Analog Unit Setup Screen is displayed.



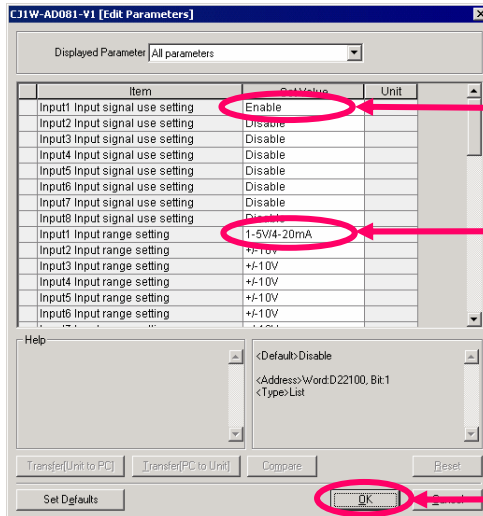
CPU Bus Units and Special I/O Units Setting Function

Traditionally, initial CPU Bus Unit and Special I/O Unit settings were made by referring to documentation to calculate DM address from the Unit number and entering a hexadecimal number. Now you can set it using the pull-down menu in the CX-Programmer's I/O Table.

Easy setup/transfer/verification operations are available from the integrated parameter settings screen as shown below, without recognizing addresses (this function uses CPS function of CX-One previously described).

Setting CPU Bus Units and Special I/O Units

For example, specify input number designation and range.



Unit parameter setting

Select [Enable] for input No.1 usage designation.

Select [1~5V/4~20mA] for input No.1 range setting.

Click the [OK] button.

NCF Unit and Servo Driver Connected to the NCF Unit Setup

As with Analog Unit registration, register the NCF Unit (CJ1W-NCF71).
 The NCF Unit resides within a position control Unit.
 Next, start CX-Motion-NCF using [Start with Settings Inherited].

When opening a stored project file after starting the dedicated tool, select [Start Only].
 If [Start with Setting Inherited] is selected, a new project is created.

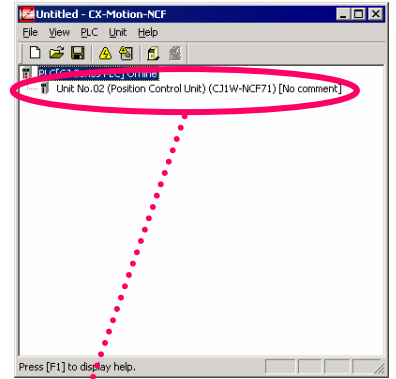
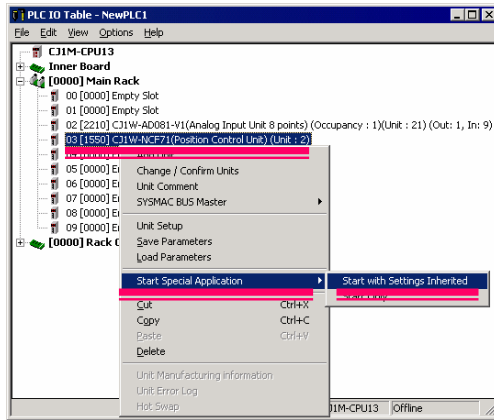
Right-click NCF Unit



Point [Start Special Application]



Click [Start with Settings Inherited]

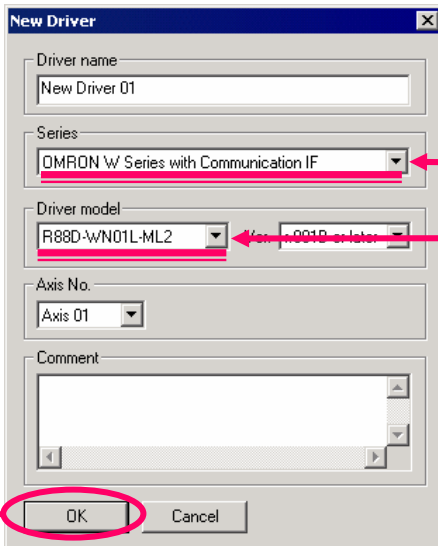
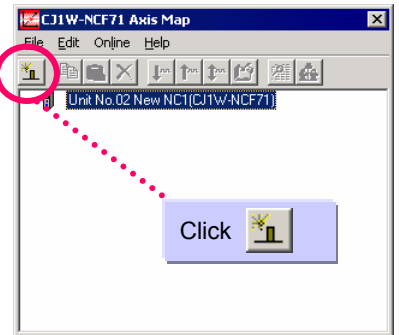
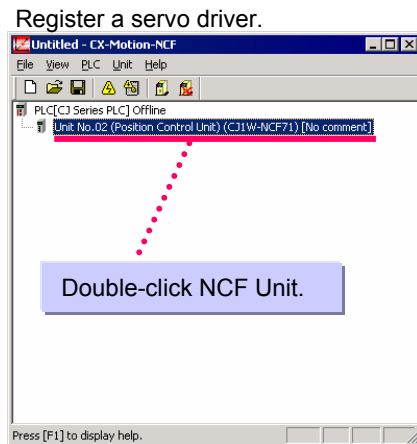


Displayed with NCF Unit registered.

Double-click NCF Unit



Click

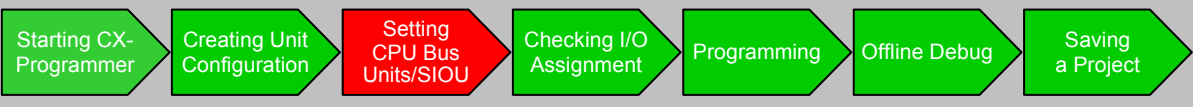


Select OMRON W series (with communications function).

Select R88D-WN01L-ML2.

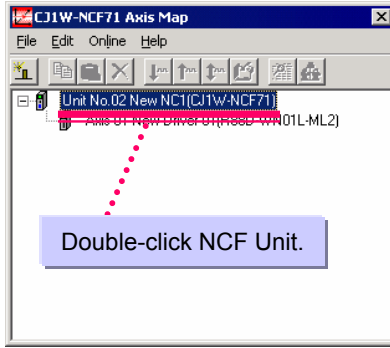
Click



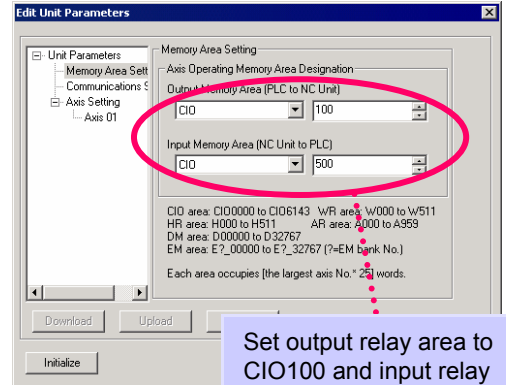


Edit NCF Unit parameters.

Double-click NCF Unit

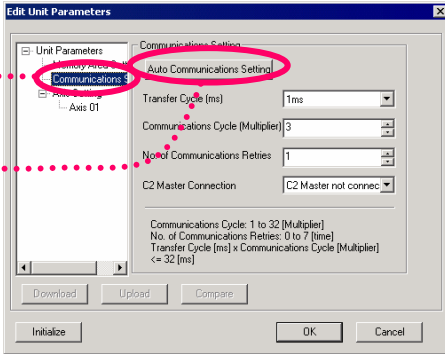


Double-click NCF Unit.



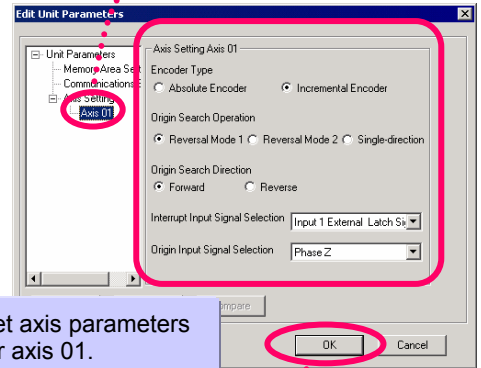
Set output relay area to CIO100 and input relay area to CIO500.

Select [Communications Setting]



Click Auto Communications Setting

Select [Axis 01].

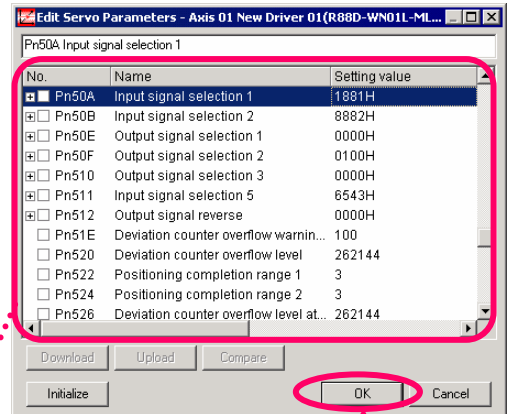
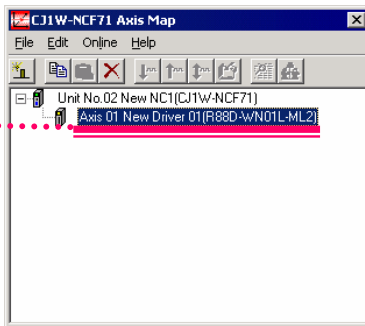


Set axis parameters for axis 01.

Click

Edit servo parameters.

Double-click the servo driver



Set servo parameters for axis 01 as shown below.

- Pn50A(input signal selection 1): 2881
- Pn50B(input signal selection 2): 8883
- Pn511(input signal selection 5): 6541

Click

Using the MCH Unit

When using the MCH Unit (CJ1W-MCH71) instead of the NCF Unit, use the following settings.

As with Analog Unit, register the MC Unit to the I/O table.

The MCH resides within the Motion Controller.

Then start CX-Motion-MCH using [Start with Settings Inherited].

When opening a stored project file after starting the dedicated tool, select [Start Only]. If [Start with Setting Inherited] is selected, a new project is created.

Right-click MCH Unit



Point [Start Special Application]



Select [Start with Setting Inherited]



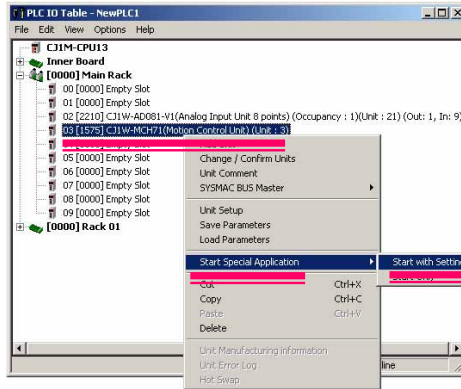
Add task, axis, program, and CAM data



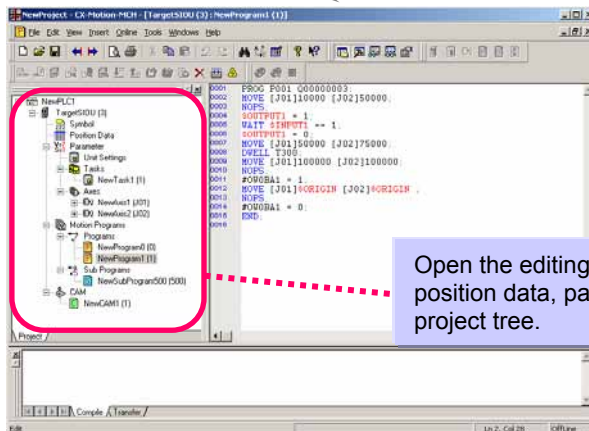
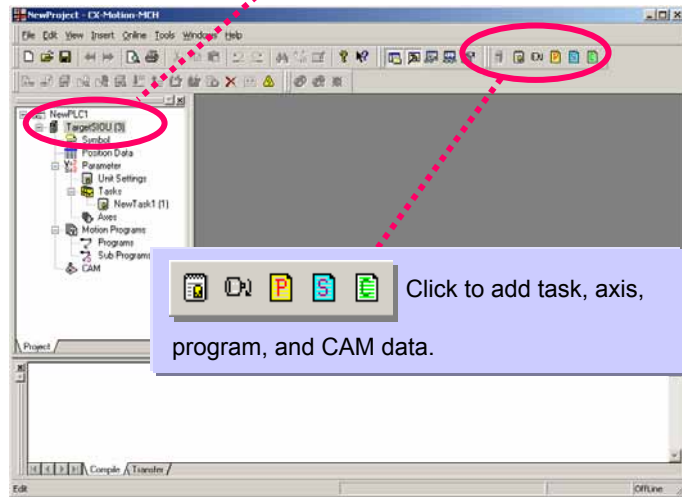
Edit position data, parameters, program, and CAM data




Save the project



Start the MCH Unit as registered.

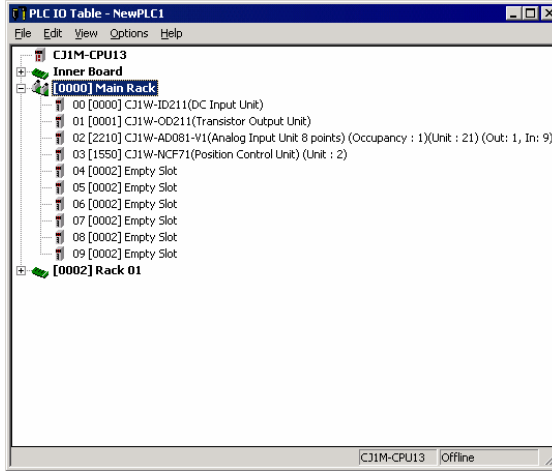


Click  and save the project to file.

Checking I/O Assignment

As with Analog Unit registration, register the IN and OUT Units.

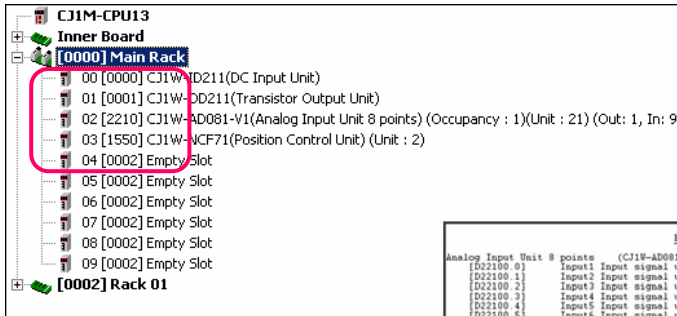
Register basic I/O Unit



In this example, CJ1W-ID211 and CJ1W-OD211 are selected as IN and OUT Units respectively.

By registering Units to the I/O Table, you can check I/O assignment status.

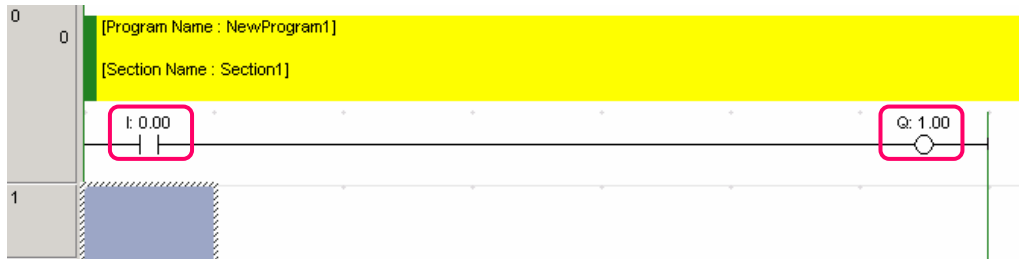
Check I/O assignment



In addition, you can check addresses assigned to actual I/O with a print out.

PLC I/O Table - NewPLC1	
D22100 0	Input1 Input signal use setting <Enable(1Hex)>
D22100 1	Input2 Input signal use setting <Disable(0Hex)>
D22100 2	Input3 Input signal use setting <Disable(0Hex)>
D22100 3	Input4 Input signal use setting <Disable(0Hex)>
D22100 4	Input5 Input signal use setting <Disable(0Hex)>
D22100 5	Input6 Input signal use setting <Disable(0Hex)>
D22100 6	Input7 Input signal use setting <Disable(0Hex)>
D22100 7	Input8 Input signal use setting <Disable(0Hex)>
D22101 0	Input1 Input range setting <1.5V+25mA(0Hex)>
D22101 2	Input2 Input range setting <-10V(0Hex)>
D22101 4	Input3 Input range setting <-10V(0Hex)>
D22101 6	Input4 Input range setting <-10V(0Hex)>
D22101 8	Input5 Input range setting <-10V(0Hex)>
D22101 10	Input6 Input range setting <-10V(0Hex)>
D22101 12	Input7 Input range setting <-10V(0Hex)>
D22101 14	Input8 Input range setting <-10V(0Hex)>
D22102 0	Input1 Mean value processing setting <Mean value processing for 2 buffers(0Hex)>
D22102 2	Input2 Mean value processing setting <Mean value processing for 2 buffers(0Hex)>
D22102 4	Input3 Mean value processing setting <Mean value processing for 2 buffers(0Hex)>
D22102 6	Input4 Mean value processing setting <Mean value processing for 2 buffers(0Hex)>
D22102 8	Input5 Mean value processing setting <Mean value processing for 2 buffers(0Hex)>
D22102 10	Input6 Mean value processing setting <Mean value processing for 2 buffers(0Hex)>
D22102 12	Input7 Mean value processing setting <Mean value processing for 2 buffers(0Hex)>
D22102 14	Input8 Mean value processing setting <Mean value processing for 2 buffers(0Hex)>
D22118 0	Operation mode setting <Normal mode(0Hex)>
CIO2210 0	Input1 Peak value hold <Not used(0Hex)>
CIO2210 1	Input2 Peak value hold <Not used(0Hex)>
CIO2210 2	Input3 Peak value hold <Not used(0Hex)>
CIO2210 3	Input4 Peak value hold <Not used(0Hex)>
CIO2210 4	Input5 Peak value hold <Not used(0Hex)>
CIO2210 5	Input6 Peak value hold <Not used(0Hex)>
CIO2210 6	Input7 Peak value hold <Not used(0Hex)>
CIO2210 7	Input8 Peak value hold <Not used(0Hex)>

This I/O assignment information can also be checked by IQ indication (IN:I, OUT:Q) during ladder programming.

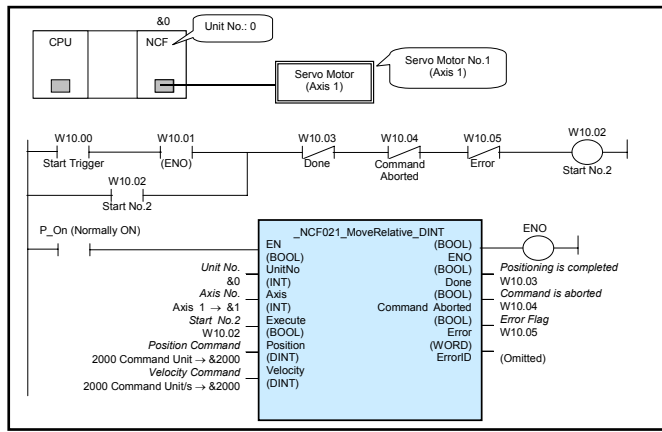


Programming

This section describes programming with Library (OMRON Standard Libraries) that allows easier connection to OMRON's Components. OMRON Standard Libraries is a group of Components provided by OMRON, which can be categorized into two types; FB Components (OMRON FB Library) to be used for a ladder program and SAP Components (Smart Active Parts Library) to be used for an indicator.

● NCF Unit Programming with OMRON FB Library

Servo motor (axis 1) connected to Unit number 0 NCF is moved to position 2000 (command Unit) with speed of 2000 (command Unit/s) by relative move command.



Right-click from Function Blocks



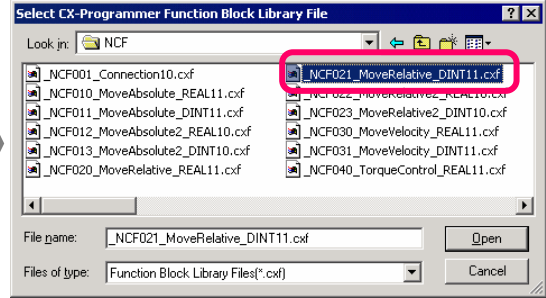
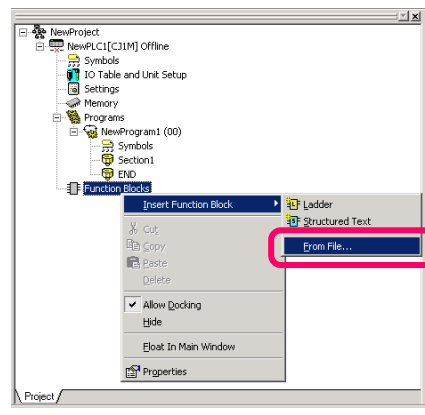
Select a folder from [Omronlib] > [Position Controller] > [NCF]



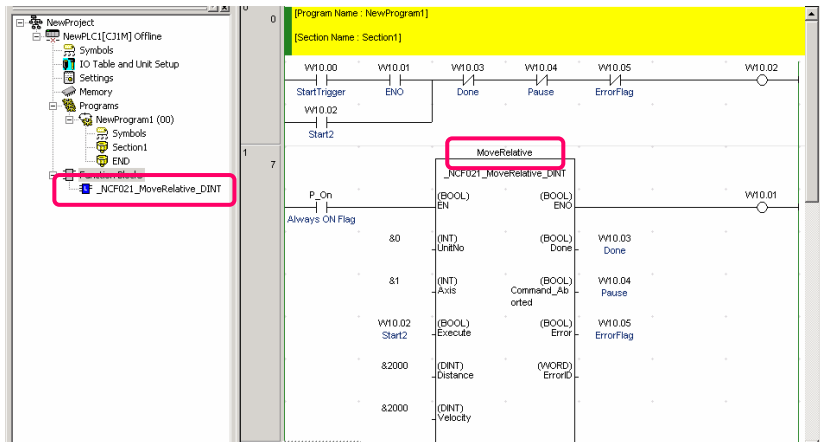
Select OMRON FB Library "_NCF021_MoveRelative_DINT11.cxf"



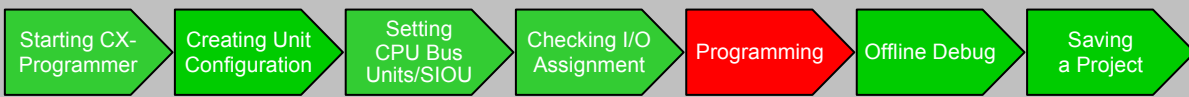
Enter "MoveRelative" for instance name. Then create a ladder program



Paste the selected OMRON FB Library on the ladder, then enter its name (instance name) (in this example, "MoveRelative"). Then create a ladder program as shown below.



OMRON FB Library is a collection of Components that OMRON provides as a Function Block to use functions of OMRON's Units for PLC and FA Components much easier on a PLC program. * For details, see *FunctionBlock StructuredText Introduction Guide*, Chapter 1.

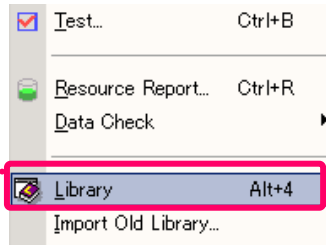


How to use Smart Active Parts

This section describes how to use Smart Active Parts. In this example, NCF Smart Active Parts “Adjust Operation” is used.

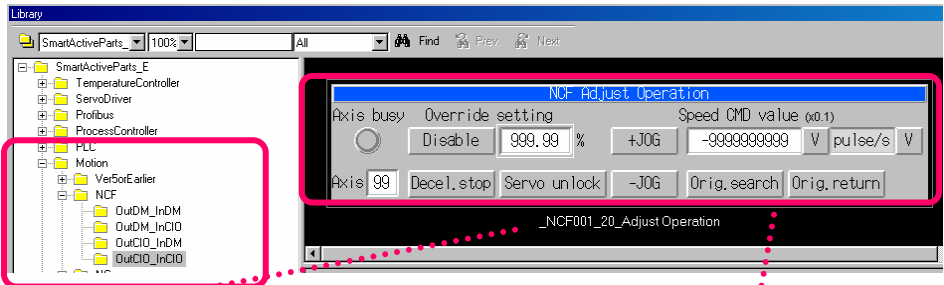
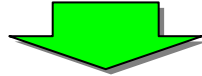
From [Start] menu, select [Programs] > [OMRON] > [CX-One] > [CX-Designer] > [CX-Designer Ver.□] to start CX-Designer. (Or select [All Programs] > [OMRON] > [CX-One] > [CX-Designer] > [CX-Designer Ver.□].) Select [NS8-TV0[]-V1] and [System Version 6.0] or later.

See Library



Select [Library] from the [Tools] menu

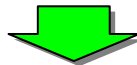
Place Smart Active Parts on the screen.



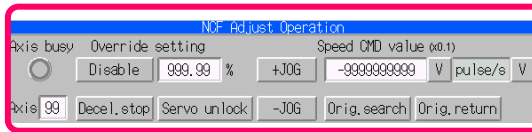
1. Select SmartActiveParts_E -Motion - NCF - OutCIO_InCIO folder

2. Select _NCF001_xx _Adjust Operation (Check the Title)

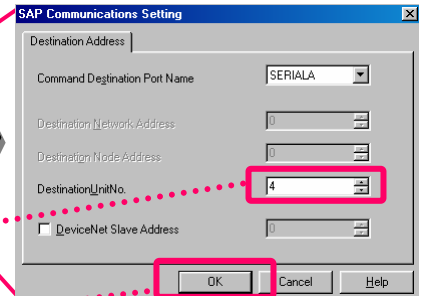
3. Drag & drop it on the screen.



4. The selected Smart Active Parts are displayed on the screen.



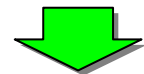
Setup Smart Active Parts



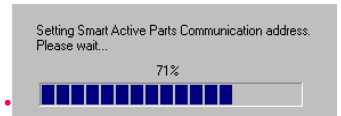
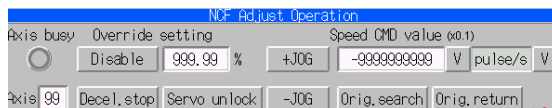
1. Double-click

2. Set 4 to the Destination Unit No.

3. Click [OK]



Smart Active Parts Setting is complete



4. Communication address is automatically calculated according to the corresponding Unit.


Setup is completed at 100%

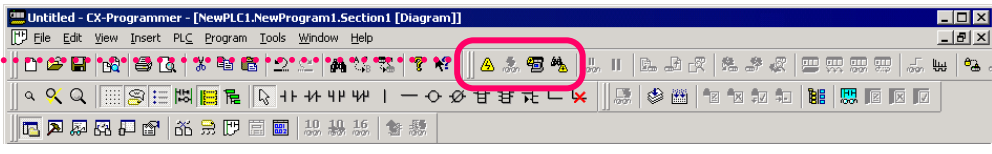
Save the Project.

Refer to Page 2-13 “Saving Project” for details.

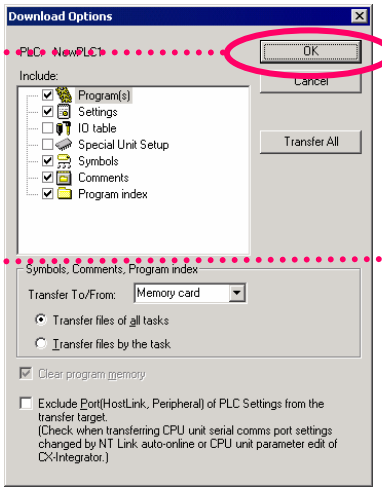
Offline Debug

This section describes how to debug a program using CX-Simulator, a ladder simulation tool, without the PLC. Additionally, Switch Box Utility is used as a virtual input tool.

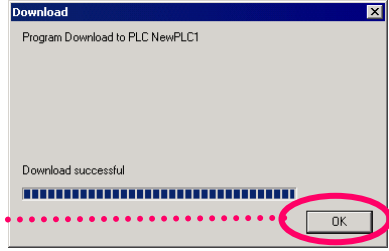
Click 
(Simulator connection button)



Click [OK]



Program transfer starts.



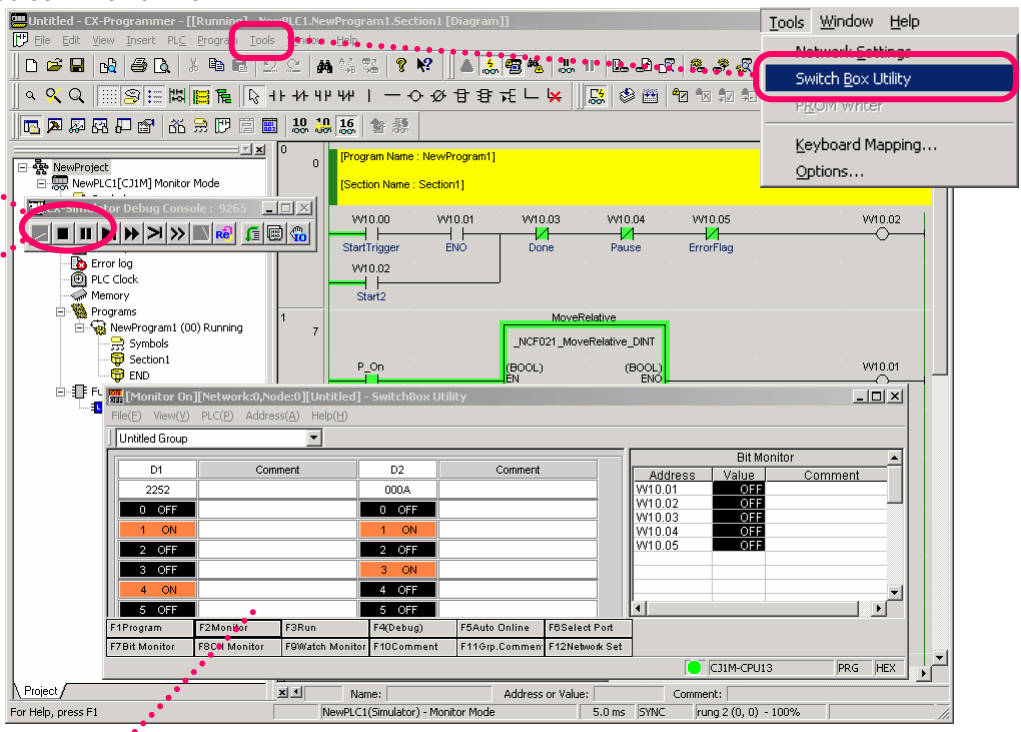
Click [OK]

Screen when online

CX-Simulator debug console is starts

Starting Switch Box Utility
Select [Tools] > [SwitchBox Utility]

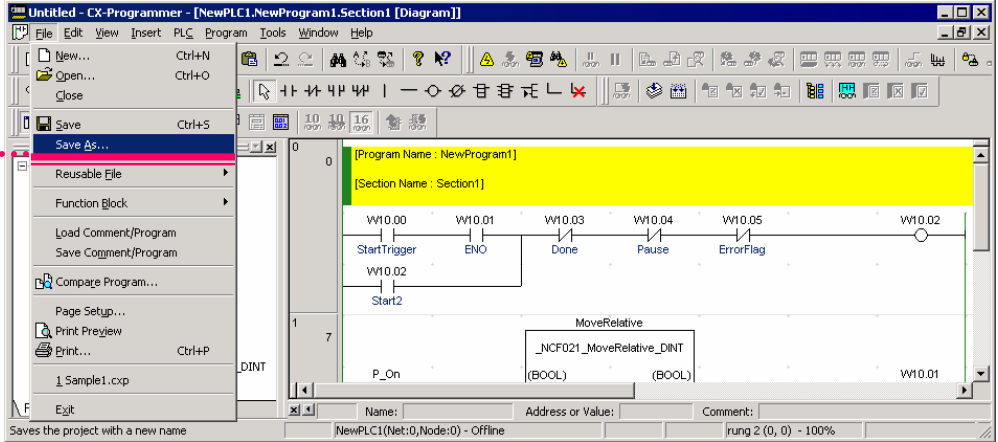
Run PLC



Switch Box Utility
It is useful not only for virtual input by simulator but also for debugging while checking the PLC's wiring or setting the DM and other initial values.

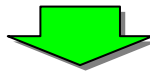
Saving a Project

Unit setting, Unit parameter setting, and programs using the CX-Programmer can be saved all at once.

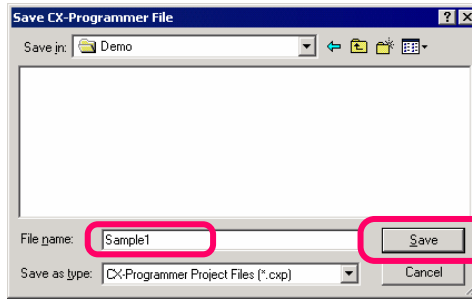


Saving a CX-Programmer file

From the [File] menu, select [Save As...]



Save it with a name. In this example save as "Sample1".

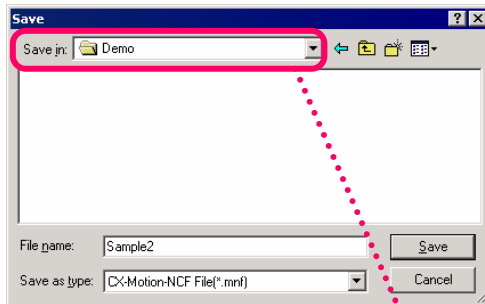


Click

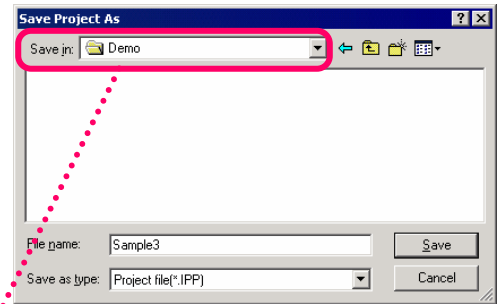
Saving CX-Designer and CX-Motion-NCF/MCH files

Created data can be saved for CX-Designer and CX-Motion-NCF/MCH. Save CX-Motion-NCF as "Sample2.mnf" (CX-Motion-MCH as "Sample5.mnh"), and CX-Designer as "Sample3.ipp".

Saving screen for CX-Motion-NCF



Saving screen for CX-Designer



If you run a dedicated Support Software such as CX-Motion-NCF or CX-Designer when CX-Programmer is started, the same default folder location as that of CX-Programmer is used for reading and saving files. It allows easier CX-One Support Software file management.



This section describes connection to the machine, transfer of programs, creating Unit settings offline, and how to debug.

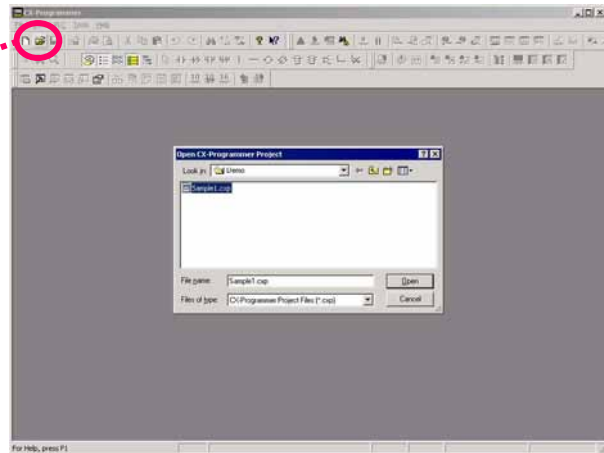
Reading a Project

From [File] > [Open], select the file name "Sample1"

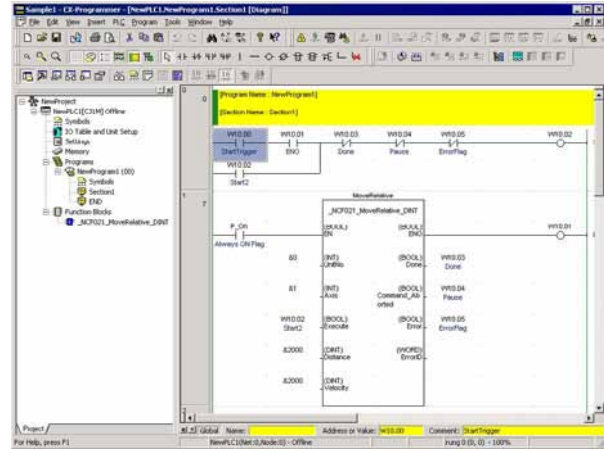
or
Click



Use CX-Programmer to read the project "Sample1" saved in the previous section.

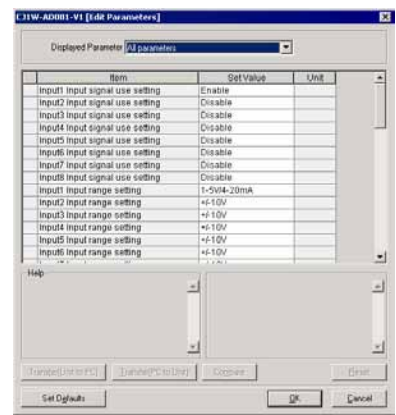
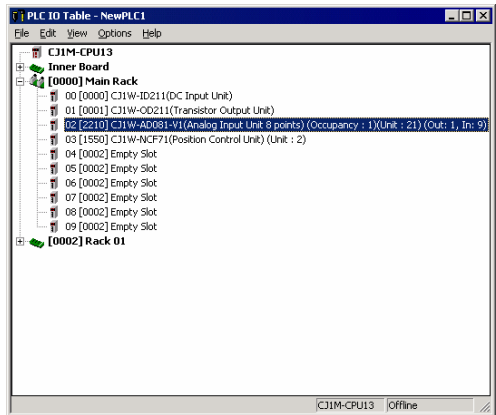


Ladder program "Sample1" is retrieved.



In I/O Table Unit setting function, the Unit parameter setting configured in the previous section is also retrieved.

Double-click the I/O Table Unit setting



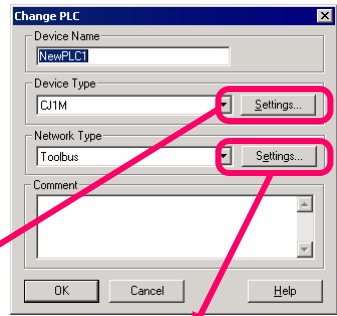
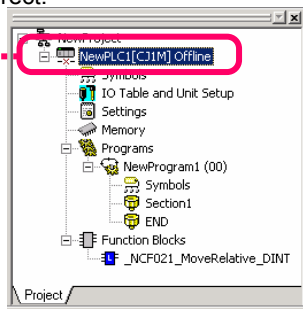
Item	Set Value	Unit
Input1 input signal use setting	Enable	
Input2 input signal use setting	Disable	
Input3 input signal use setting	Disable	
Input4 input signal use setting	Disable	
Input5 input signal use setting	Disable	
Input6 input signal use setting	Disable	
Input7 input signal use setting	Disable	
Input8 input signal use setting	Disable	
Input1 input range setting	1-5Vdc-20mA	
Input2 input range setting	+4-10V	
Input3 input range setting	+1-10V	
Input4 input range setting	+4-10V	
Input5 input range setting	+4-10V	
Input6 input range setting	+4-10V	



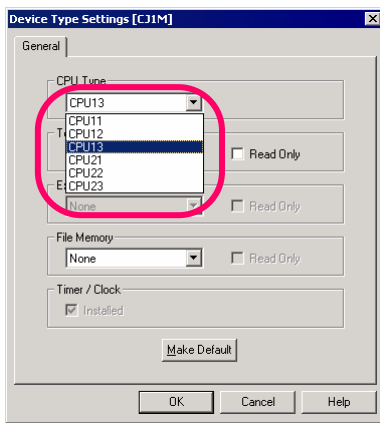
Online Connection to PLC

Verify that PLC model and communications setting created offline and the actual PLC are correct.

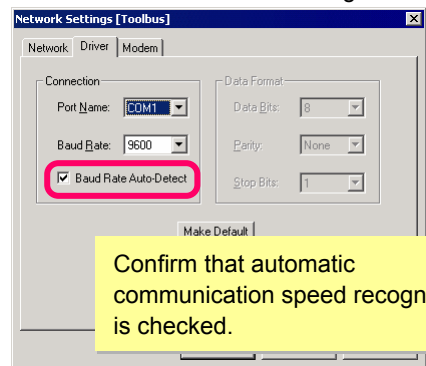
Double-click PLC



Check PLC model.



Check communications setting.

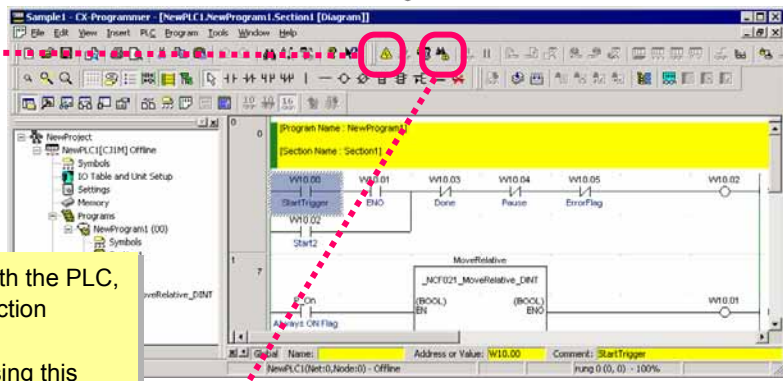


Confirm that automatic communication speed recognition is checked.

Click



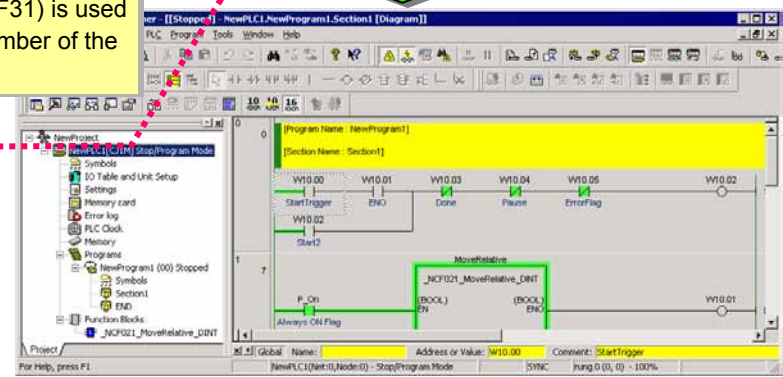
(Online connection button)



If a connection cannot be established with the PLC, you can use the automatic online connection function.

Save your current project data before using this function because it clears project data being edited. When USB conversion cable (CS1W-CIF31) is used for connection, specify the COM port number of the USB port used.

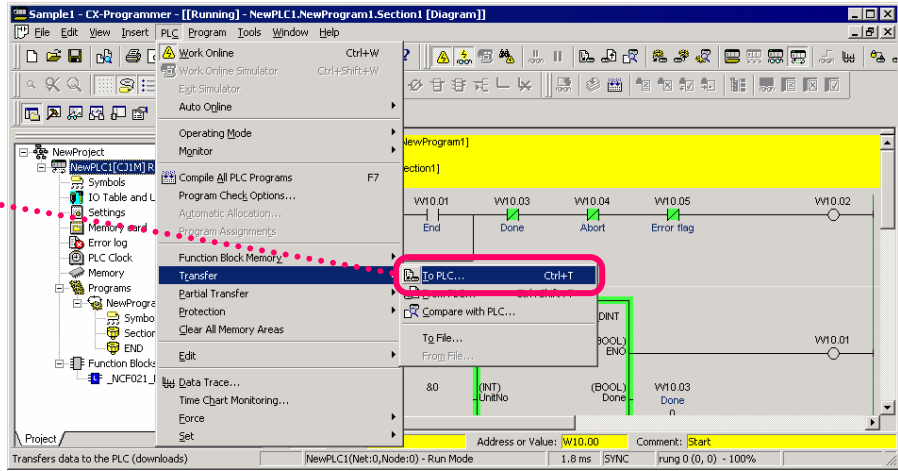
(Automatic online connection button)



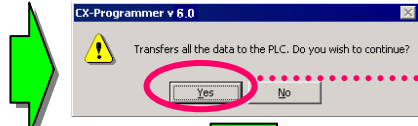
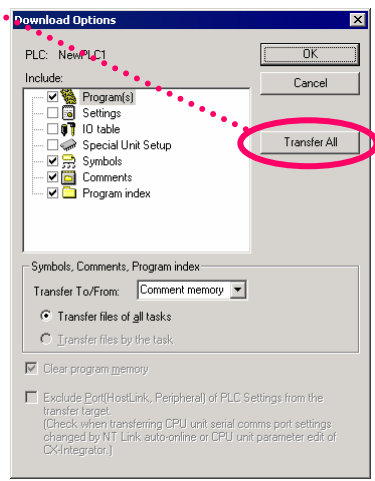
Transferring to the Machine

Transfer programs and Unit setting parameters created by offline project to the PLC.
 In this example, data is sent at the same time to various Units using the batch transfer function.
 [Data to be sent]
 CPU Unit: Ladder program and PLC System setting data, I/O Table data
 CPU Bus Units and Special I/O Units:
 AD Unit: Range setting of inputs (1~5v / 4~20mA mode)

Select [PLC] > [Transfer] > [To PLC]

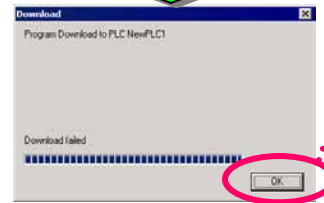


Click [Transfer All]



Click [Yes].

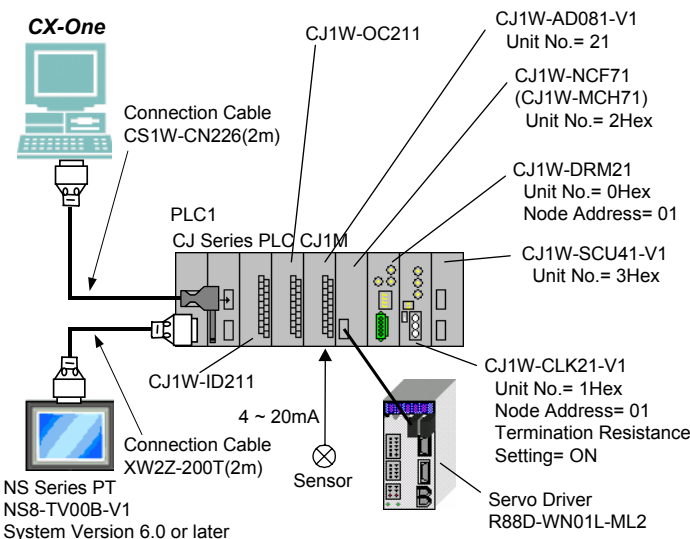
Program transfer starts.



Click [OK].

Next Page

Program and configuration data are transferred at the same time to CPU Bus Units and Special I/O Units.





Then data is sent at the same time to NCF Unit and the servo driver connected to NCF Unit.

[Data to be sent]

NCF Unit: Common parameters, axis parameters

Servo Driver: Servo parameters

From CX-Programmer, display the I/O Table, then start CX-Motion-NCF by [Start Only].

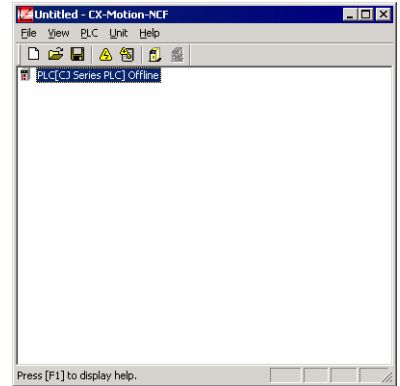
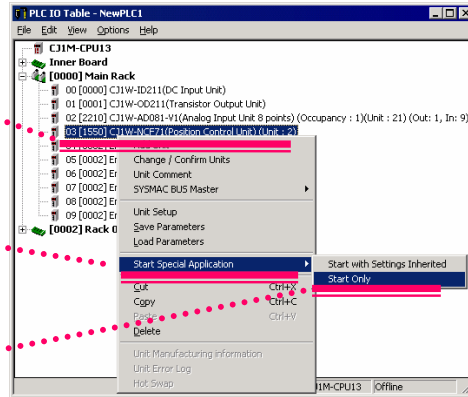
Right-click NCF Unit



Point [Start Special Application]



Click [Start Only]



Open a saved project and transfer all NCF Unit and servo driver parameters.

To prevent a servo driver operation using a ladder program, you must set the PLC to PROGRAM mode.

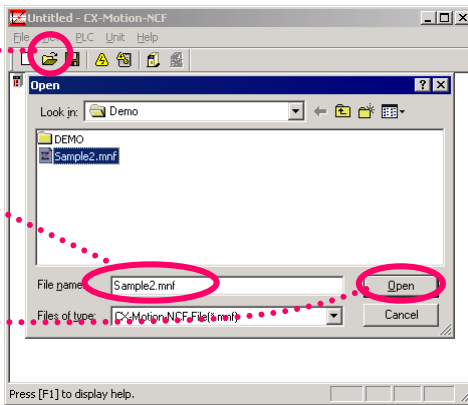
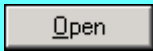
Click



Select "Sample2.mnf"



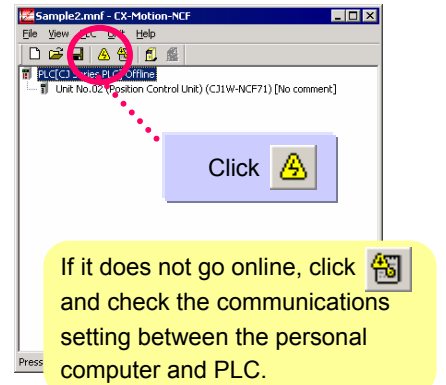
Click



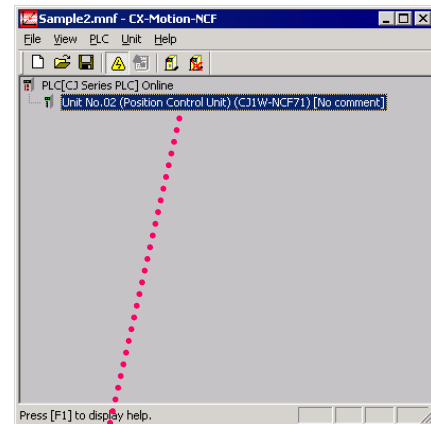
Click



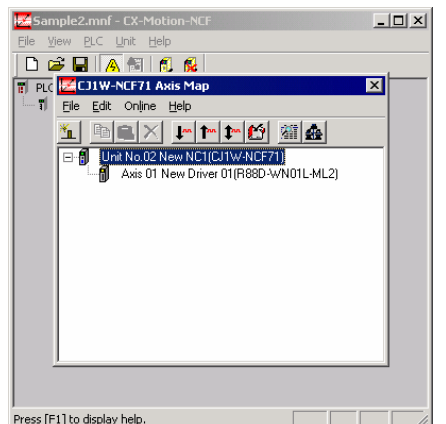
If it does not go online, click and check the communications setting between the personal computer and PLC.

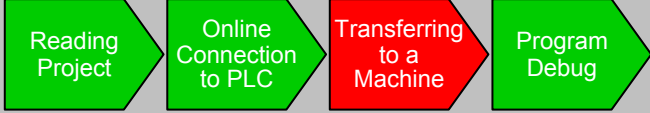


Double-click NCF Unit

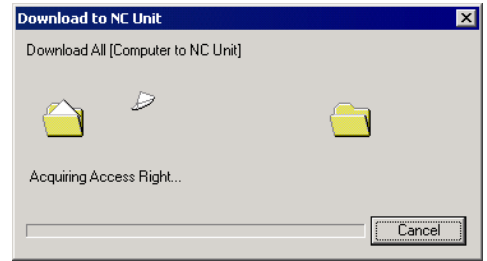
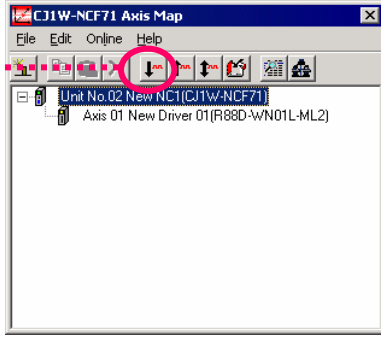


Double-click NCF Unit.





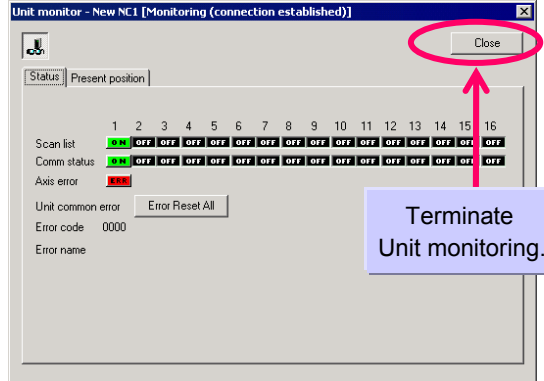
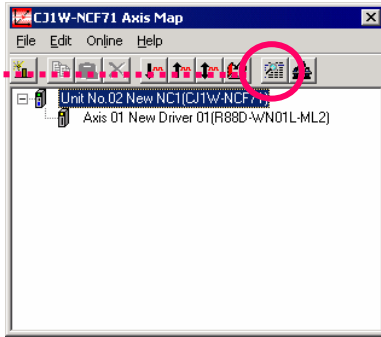
Click



The Unit restart confirmation screen will be displayed during data transfer. Click the [OK] button after confirming safety. Also, in the case of communication was not established between the NCF Unit and the servo driver, confirm the axis number and restore power to the NCF Unit and servo driver.

When parameter transfer is completed, confirm that communications is performed normally and has not resulted in an error. Monitor the NCF Unit. Confirm consistent scan list (axis configuration) and communications status and that no axis or common Unit error has resulted.

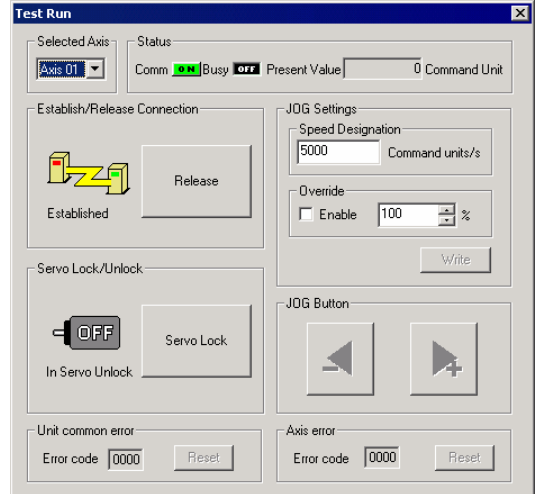
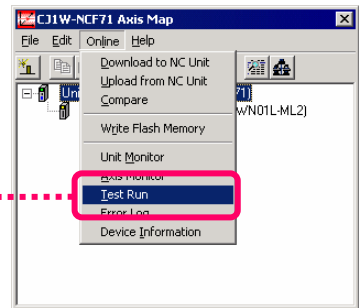
Click



Terminate Unit monitoring.

Next, perform jog operation. Carefully read the displayed cautions, then perform the operation. To perform jog operation, it is required to establish a connection, servo lock, and jog setting.

Click [Online] > [Test Run]





When using the MCH Unit, transfer data from the CX-Motion-MCH to the MCH Unit and servo driver connected to the MCH Unit.

[Data to be transferred]

MCH Unit: parameter, position data, program, CAM data.

Servo driver: servo parameter

Display the I/O table from CX-Programmer and start CX-Motion-MCH with [Start Only]. (Refer to NCF Unit for starting from the I/O table.)

Open the saved project and transfer Unit parameter, position data, program, CAM data, and servo driver parameters to the MCH Unit.

To prevent a servo driver operation using a ladder program, you must set the PLC to PROGRAM mode.

Click

Select file .mnh

Click [Open]

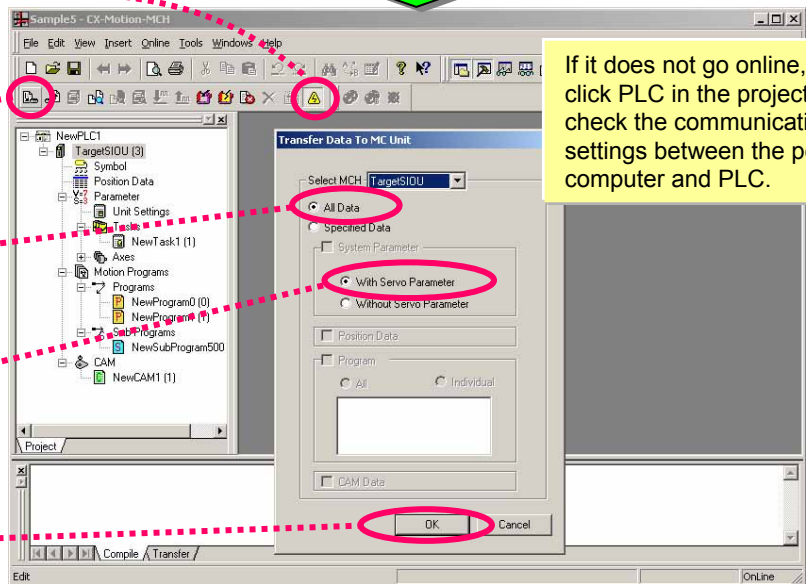
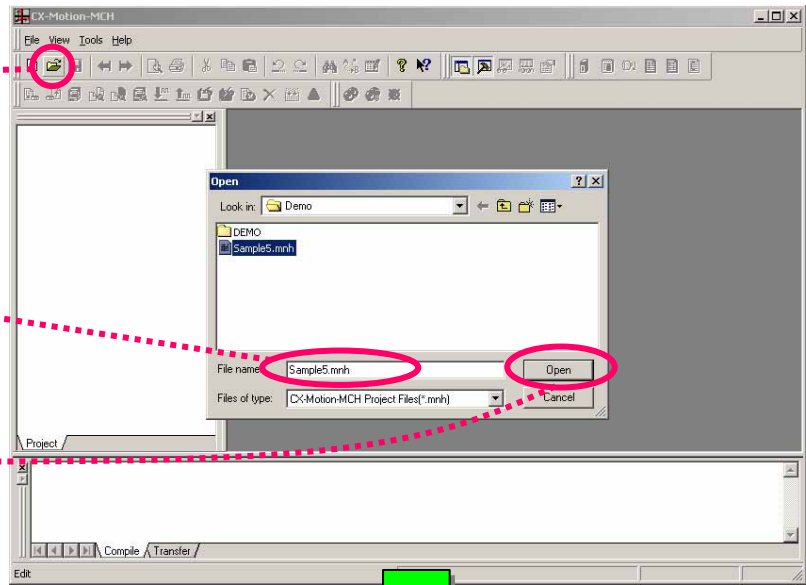
Click

Click

Select [All Data]

Select [With Servo Parameter]

Click [OK]



The Unit restart confirmation screen will be displayed during data transfer. Click the [OK] button after confirming safety. Also, in the case of communication was not established between the MCH Unit and the servo driver, confirm the axis number and restore power to the MCH Unit and servo driver.



Transferring NS screen data

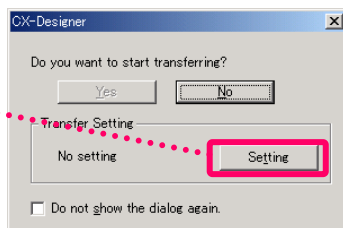
This section describes how to transfer screen data to the NS through PLC without changing cables.

From [Start] menu, select [Programs] > [OMRON] > [CX-One] > [CX-Designer] > [CX-Designer Ver.□] to start CX-Designer. (Or select [All Programs] > [OMRON] > [CX-One] > [CX-Designer] > [CX-Designer Ver.□].) Open a project saved in the previous section.

Select [Transfer]-[Transfer[To PT...]] from the [PT] menu.

Start NS transfer program

Click on **Setting**



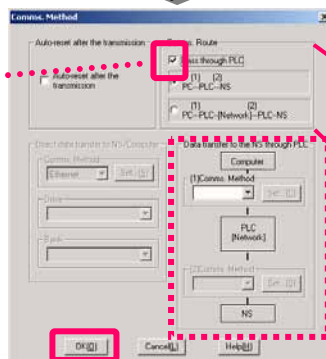
*Communication between the NS and the PLC must be established before transferring screen data through PLC without changing cables.

If "Connecting..." is displayed at the right bottom of the screen, use Auto Connection (See Chapter 3 1-3 "Setup NT Link") to connect the NS and the PLC before starting the following procedure.

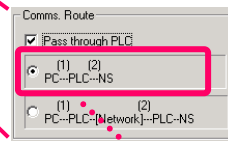
If the communication between the NS and the PLC has already been established, you do not need to perform the operation described above.

Setup communication route

Check "Pass thru PLC" in the Comm. Method window



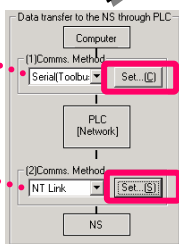
Check "Pass thru PLC" to activate the "PC → PLC → NS" route setting.



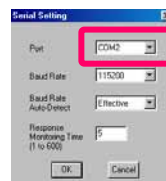
Select PC - PLC - NS.

Select Serial (Toolbus)

Setup "Data transfer to the NS through PLC".

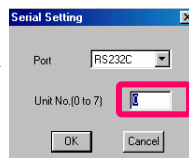


Select NT Link



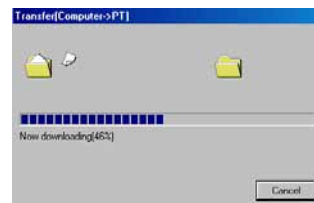
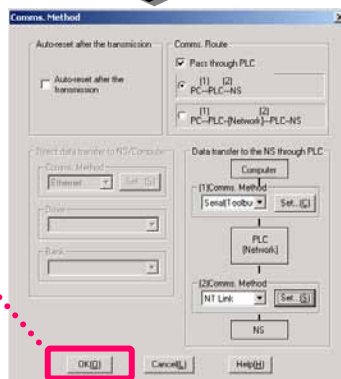
Set the serial port COM No. for PC → PLC connection. Then, press OK.

Press each setting button.



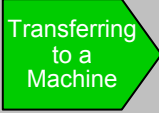
Enter NS Unit No. Then, press OK.

Transfer screen data



Screen data transfer is complete at 100%.

Click OK to start transfer



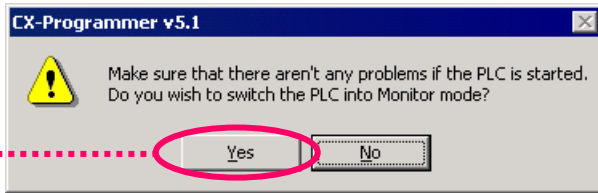
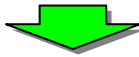
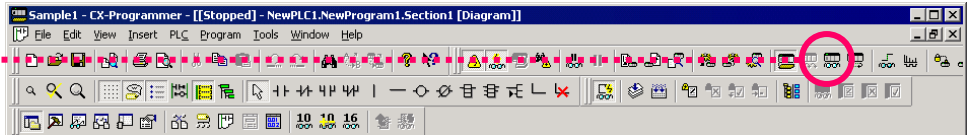
Program Debug

Transfer programs and Unit setting parameters created by an offline project to the PLC. In this example, data is sent at the same time to various Units using the batch transfer function.

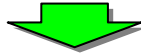
Monitoring

Monitor ON/OFF status of contacts and coils.

Click



Click [Yes]

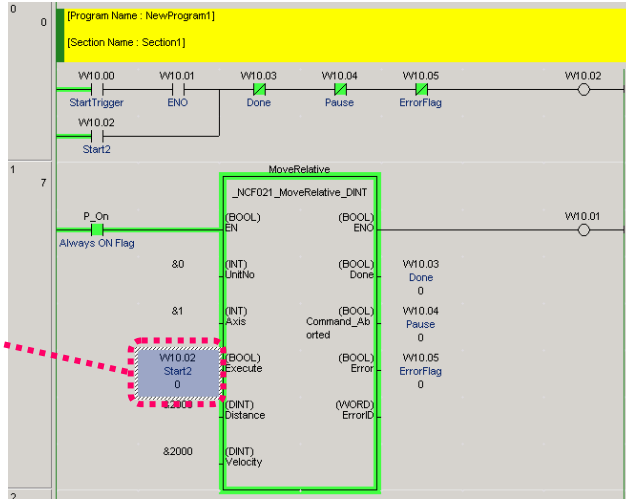


... ON/OFF of monitoring

The screenshot shows the CX-Programmer software in Monitor Mode. The left pane displays the project tree with 'NewPLC1[CPU] Monitor Mode' selected. The main window shows a ladder logic diagram for 'Section1' with a 'MoveRelative' function block. A blue callout bubble points to the function block's frame, stating: "Frame color changes to a specified color during Function Block execution." Another blue callout bubble points to the 'Start2' parameter, stating: "Current parameter value is displayed." The status bar at the bottom shows 'NewPLC1[Net:0,Node:0] - Monitor Mode' and 'rung 0 (0, 0) - 100%'.

Monitoring -2 Changing the Current Parameter Value

Change the current value of contact or channel through conductive monitoring.



Move the cursor to D100 of input parameters

Right-click, then select [Set/Reset (S)] > [Value (V)] from the pull-down menu

or

Double-click

Or

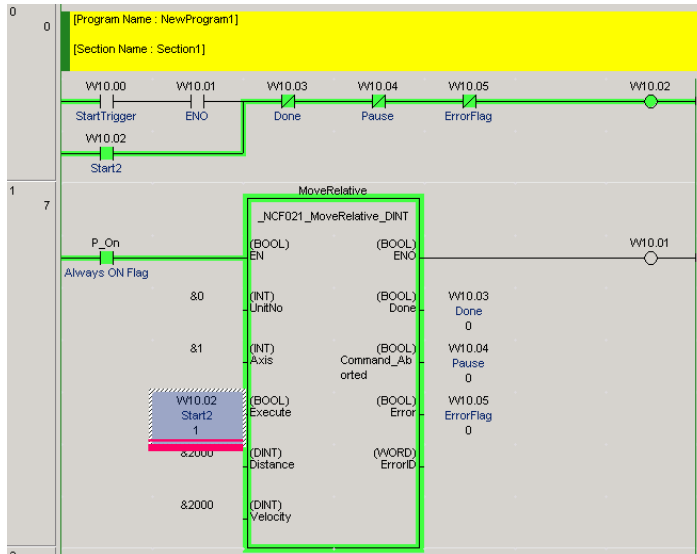


Change current value of the input parameter.

The "Set New Value" dialog box is shown. It has fields for "Address" (W10.02), "Data type" (BOOL), and "Value" (1). A "Set" button is circled in red. Below the dialog box, the text "0, 1 (OCH)" is visible.

Click

Ensure to add "#" (hexadecimal/BCD) or "&" (decimal) to the left of the value.



Online Program Modification (Online Edit)

Move the cursor on the circuit you want to modify

You can use drag-and-drop to specify more than one circuit at the same time



Select [Program] > [Online Edit] > [Start]

Shortcut [Ctrl]+[E]

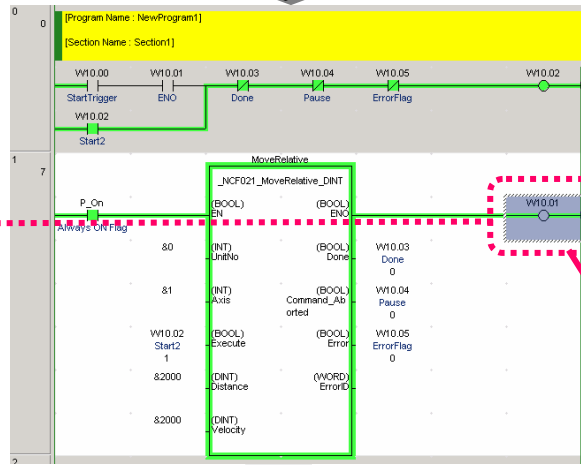
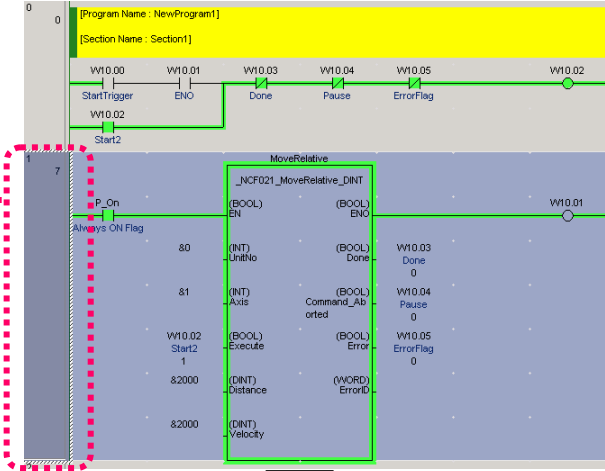


Move the cursor on the contact you want to modify and double-click

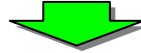


Select [Program] > [Online Edit] > [Transfer Change]

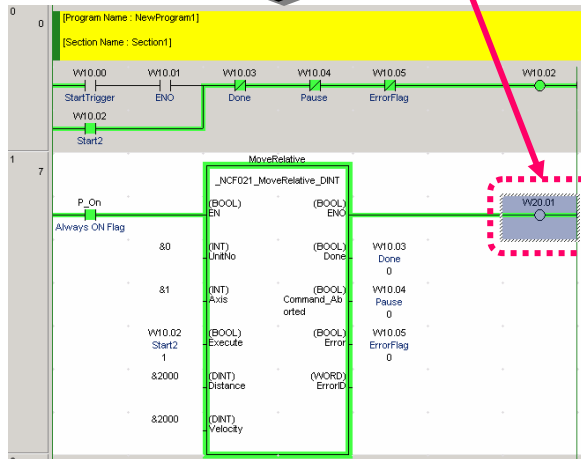
Shortcut [Ctrl]+[Shift]+[E]



Double-click



Enter the contact number you want to modify (W20.01 in a circuit example).

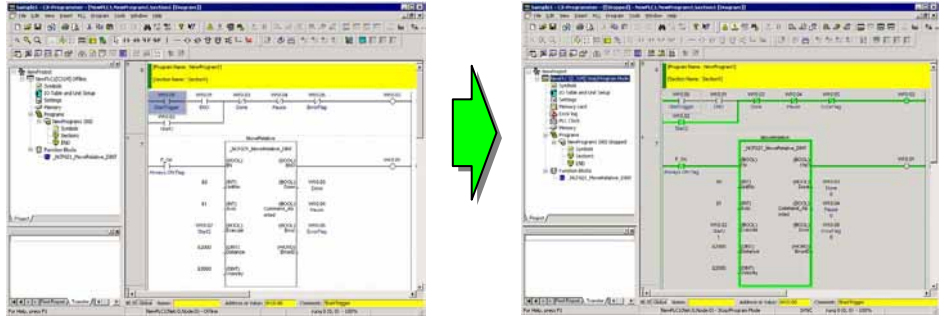


Verifying Program

After modification on-site, you can verify it with the designed program and display the differences graphically. This allows for easier checking of the parts modified on-site.

1. Read the designed program. In this example, read "Sample1". Then connect online.

Click 
(Online connection button)

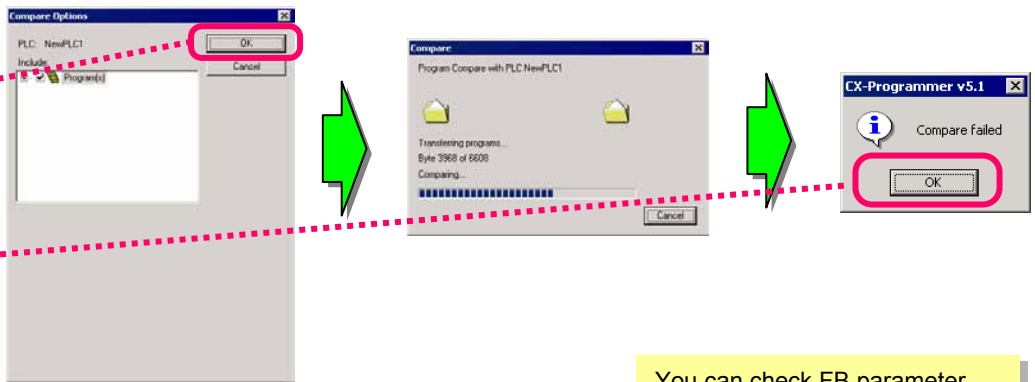


Select [PLC] > [Transfer]
> [Compare with PLC]

Click [OK]

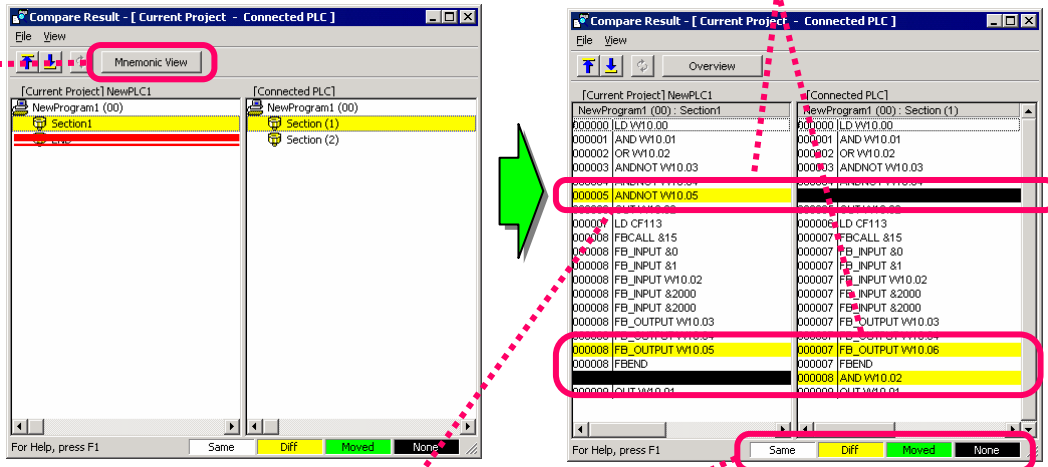
Click [OK]

2. Select verification.



3. Display the verification result.

Click [Section (1)] >
[Mnemonic View]



You can check FB parameter differences.

You can check ladder contact address differences.

In addition, you can check add, delete, and move contacts, coils, and apply instructions.

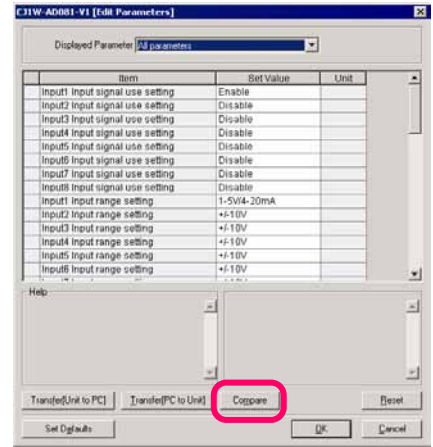
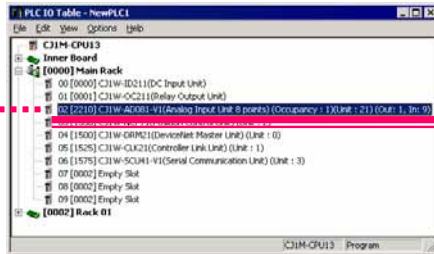
Unit Parameter Change and Verification

After modification on-site, you can verify it with the designed Unit parameter and display the differences graphically. This allows for easier checking of the parts modified on-site.

1. Read the designed program. In this example, read "Sample1". Then connect online. (If you have already read it in the previous section's operation, this is not required)
Open the I/O Table/ Unit setting, then double-click the AD Unit.

Click [I/O Table/Unit
Setting]

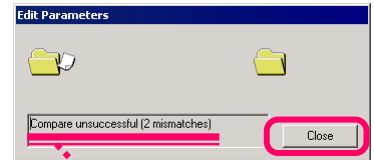
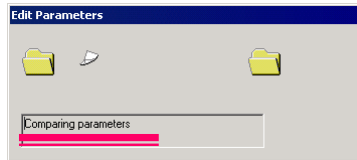
Double-click the
registered AD Unit



Click [Compare] button

2. Click the [Compare] button.

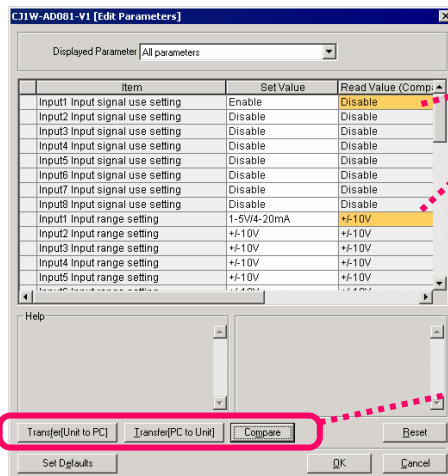
Now you can see the difference between the designed Unit parameters and the configured parameters in the machine.



Click 

You can check the
number of unmatched
items.

3. Unmatched detail differences can also be checked.



Unmatched items are
shown in orange.

After checking the
unmatched details, Unit
parameters can be easily
modified.

You have now completed Chapter 2: Example of PLC System Construction by CX-One. The next chapter describes PLC network construction flow.

Chapter 3

Example of PLC Network System Construction by CX-One

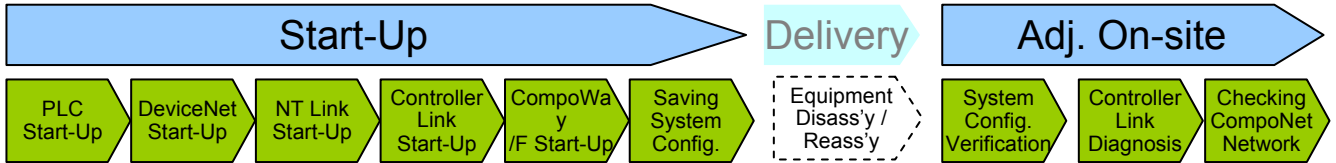
CX-One

Example of PLC Network System Construction by CX-One

Workflow in This Chapter

This chapter describes an example of PLC network System construction from start-up to reassembly and on-site adjustment as shown below.

This chapter mainly describes how to start up the System using CX-Integrator, an integrated start-up Support Software for various PLC networks.



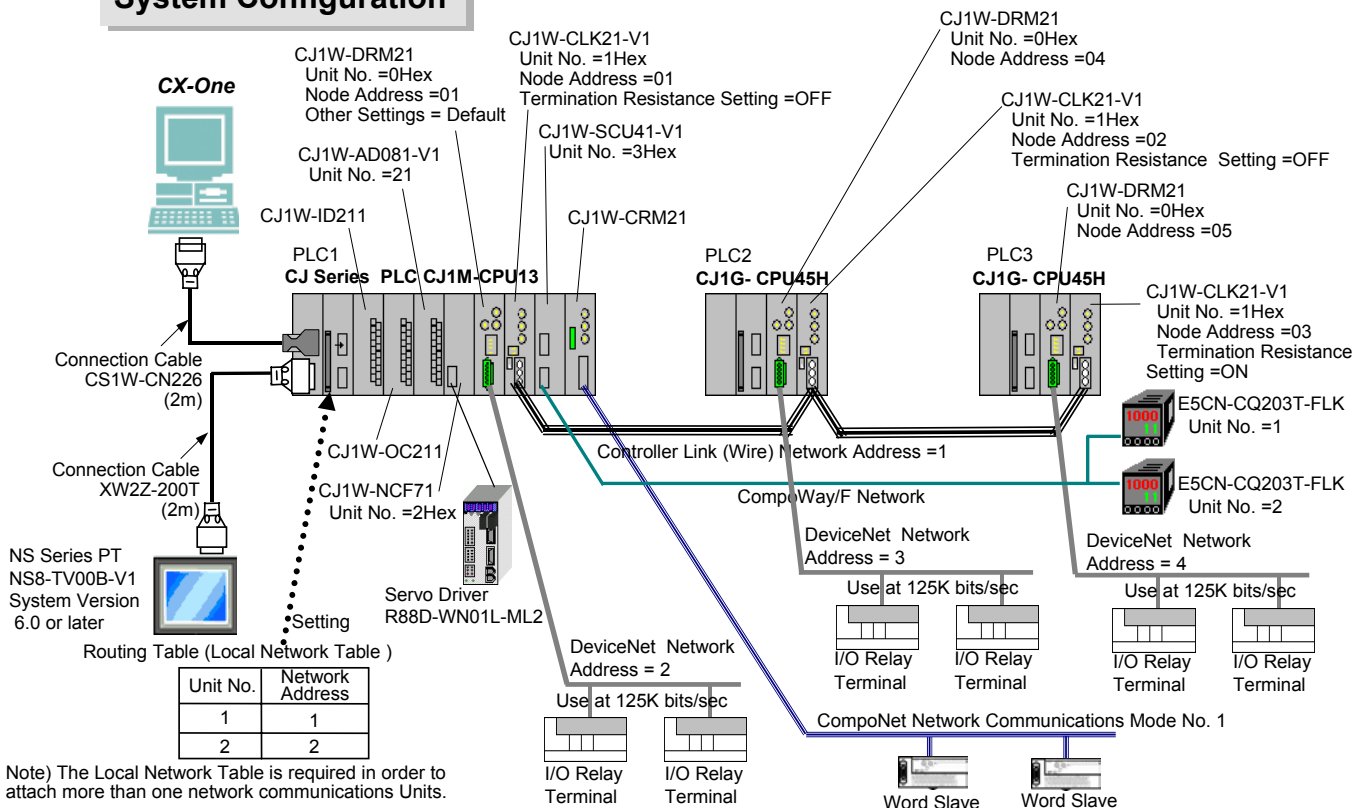
Start-Up

- Describes details from assembly and wiring of PLC System to program download for a trial run.
- Target of Start-Up
Aims at removing the cause of errors from a PLC and to turn off all of red LEDs that indicate errors for any component of the PLC System.
- Saving the entire system configuration after completing start-up is recommended. You can utilize it for system adjustment on-site after delivery to reduce the adjustment period.

Adj. On-site

- Describes details from disassembly of a system for which the trial run, delivery, and reassembly on-site as well as operation check have been completed.
- Target of Adjustment On-site
 - 1) Confirm that no error will occur in its electrical system in the same system configuration as that before delivery.
 - 2) Confirm that no discrepancy will be found in Controller Link network settings by connecting to a network on-site.
 - 3) Though CompoNet network is characterized by tool-less easy start-up, using the tool can shorten the time required to check the wiring.

System Configuration



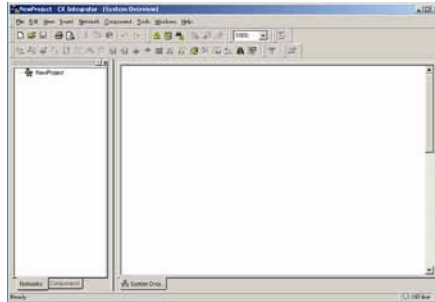


PLC Network Start-Up

Online Connection to PLC (Automatic Online Connection)

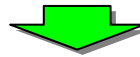
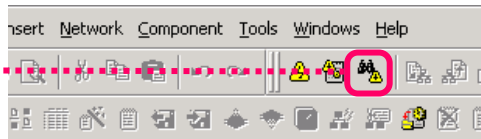
1. From the [Start] menu, select [Programs] > [OMRON] > [CX-One] > [CX-Integrator] > [CX-Integrator] to start CX-Integrator. (Or select [All Programs] > [OMRON] > [CX-One] > [CX-Integrator] > [CX-Integrator])

Starting CX-Integrator



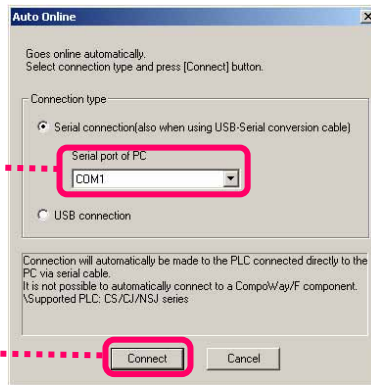
CX-Integrator starts and automatically connects online.

Click

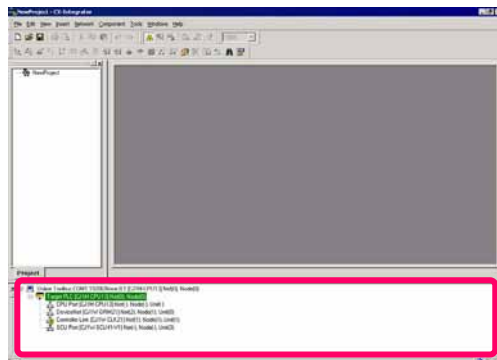
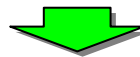


Select a serial port.
When USB conversion cable (CS1W-CIF31) is used for connection, specify the COM port number of the USB port used.

Select a serial port, then click [Connect]



(Important)
This operation is used for online connection to any PLC hereinafter. Unless described otherwise, use this operation to connect online.

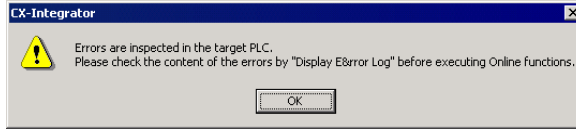


All communications Units and ports of a connected PLC are automatically displayed in the online connection information window.





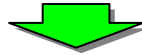
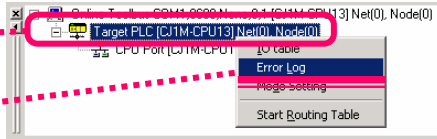
Checking PLC Error



(1) Remove the cause of the PLC error, then make it available to run.

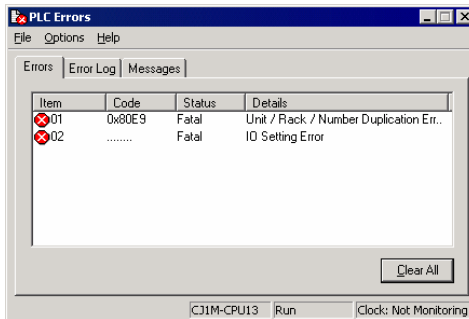
Move the cursor on the PLC and right-click

Select [Error Log]

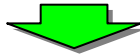


(2) Check the PLC error.

Examples of IO settings error and CPU Bus Units and Special I/O Units number overlap error are shown below.



You can check an error in a CPU Unit and error history. (You can use the same function in the error history of CX-Programmer's online screen)



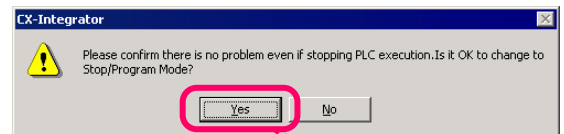
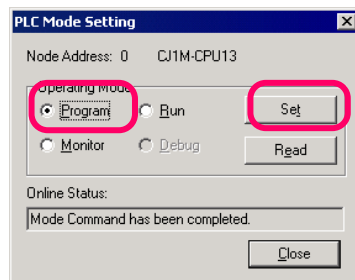
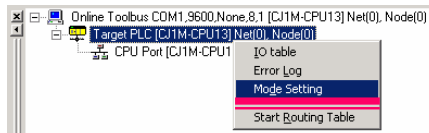
(3) Solve the cause of error.

You must solve the problem through the following procedure:

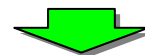
- Set the PLC to PROGRAM mode (in which you can change settings).
- Change the rotary switch of the CPU Bus Units and Special I/O Units (make sure that it does not overlap).
- Create the I/O Table.

- Set the PLC to PROGRAM mode.

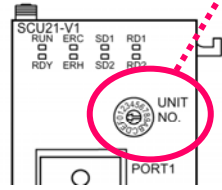
From step (1) above, select [Mode Setting] then [Program] mode, and click the [Set] button.



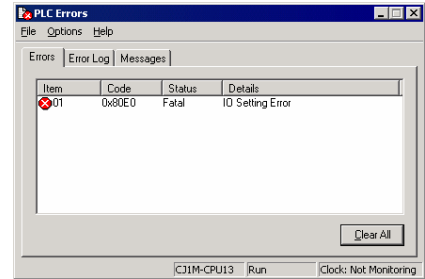
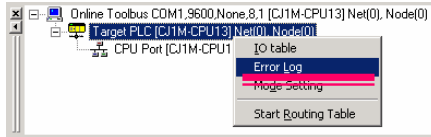
Click [Yes].



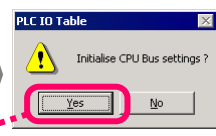
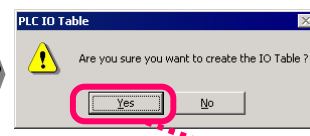
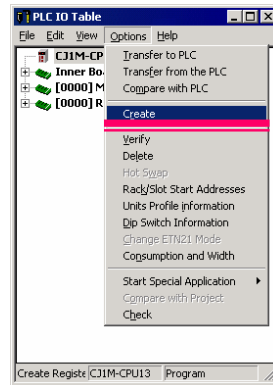
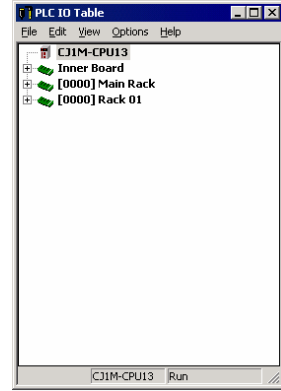
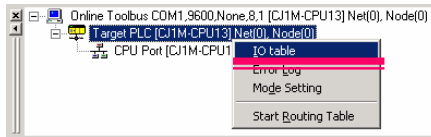
- To change the Unit number, change the rotary switch of CPU Bus Units and Special I/O Units and restart power.



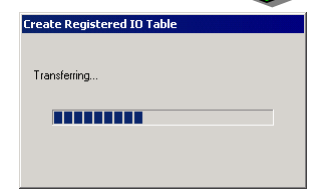
- Check if any error occurs in the PLC (CPU Bus Units and Special I/O Units number overlap error should be solved).



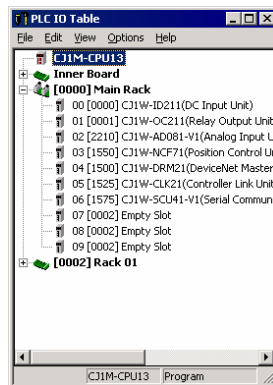
- Create the I/O Table.



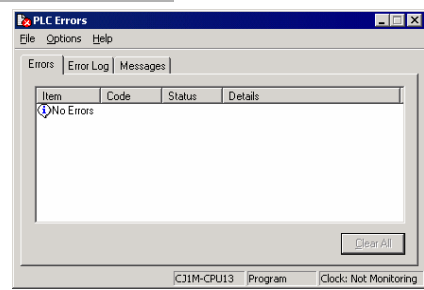
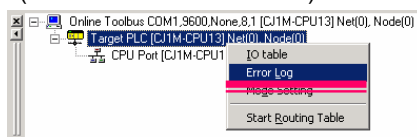
Click [Yes].



The I/O Table is created and Unit configuration is displayed.



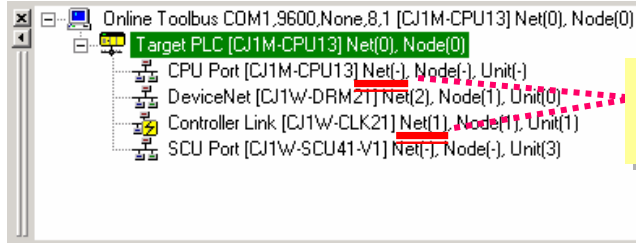
- Check if any error occurs in the PLC (all errors should be solved).





Confirming the Routing Table is not Configured

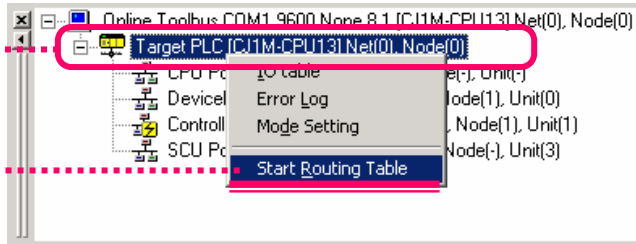
(1) Check that Routing Table is not configured.



Check Routing Table presence. If the Routing Table is not configured, create one.

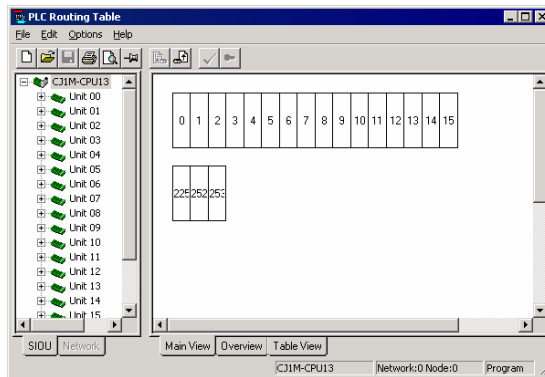
Re-connect to a PLC with CX-Integrator

(2) Configure the Routing Table.

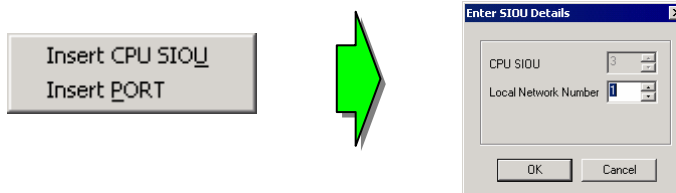


Move the cursor on the PLC and right-click

Select [Start Routing Table]



(3) Edit the Routing Table and transfer to [PLC].



Right-click and select local network (Unit) [Insert CPU SIOU] or local network (port) [Insert PORT]



Enter its local network number, then click [OK]

Set the Routing Table as shown below:

- Assign a network number to a Unit number.
 - A Unit number can be checked on the online information window.
 - Assign a network number to each network.
- The Controller Link network number is same for other PLCs.

(4) Check if the error is solved.

- Re-connect to the PLC.
- All errors should be solved and no error messages should be displayed.
- The network number is displayed on the communications Unit.

Reconnecting CX-Integrator

DeviceNet Start-Up

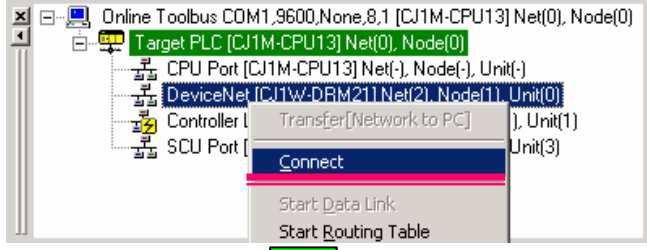
Remove DeviceNet communications errors and establish communications.

- ⇒ Check DeviceNet Unit's 7SEG indication and ON state of MS/NS LED.
- ⇒ Check Slave Unit configuration trough CX-Integrator.

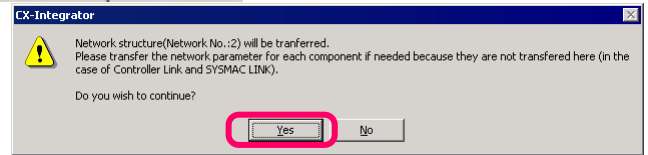
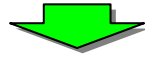
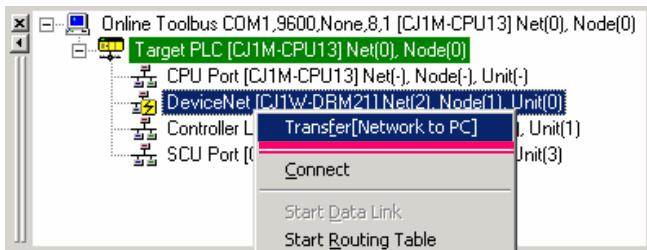
Create a scan list of DeviceNet and determine the memory map.

Right-click a DeviceNet Unit under Target Device in the online connection information window, then select [Connect]

(1) Connect to PLC online, then connect to DeviceNet through the online connection information window.

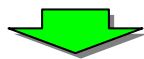
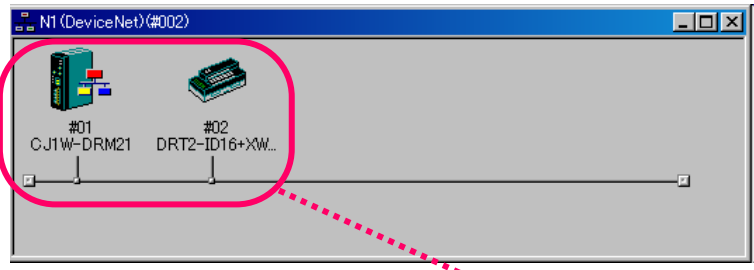


(2) Next, upload the network configuration information of DeviceNet.



In this example, although one Master Unit (node number #01) and two Slave Units (node number #02, #03) are actually connected, assume in this start-up example that one Slave Unit (#03) is not connected due to disconnection.

(3) After transfer is confirmed, connected devices on the current DeviceNet network are displayed as shown below.



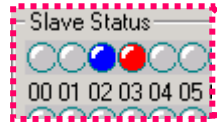
Check if a Slave device on the remote I/O communications actually wired is recognized. Master Unit (#01) and Slave Unit (#02) are recognized, while another Slave Unit (03) is not recognized.



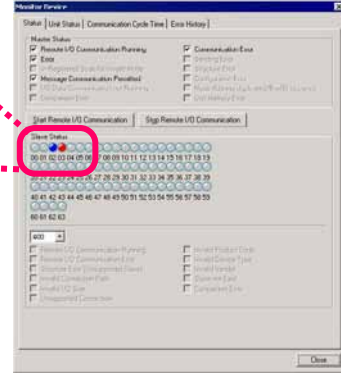
Right-click on the Master Unit icon and select [Monitor] to display the device monitor screen. Select [Status] tab

(4) Check the error on the device monitor screen.

You can check the Slave status on the device monitor screen as well.



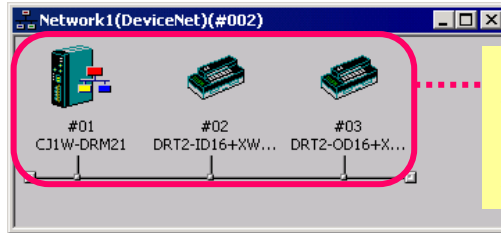
Slave Unit (#02) is recognized, while the other Slave Unit (03) is not recognized.



(5) Wire Slave Unit (#03) correctly.

(6) Re-upload the network configuration information of DeviceNet.

Perform the step (2) from the previous page



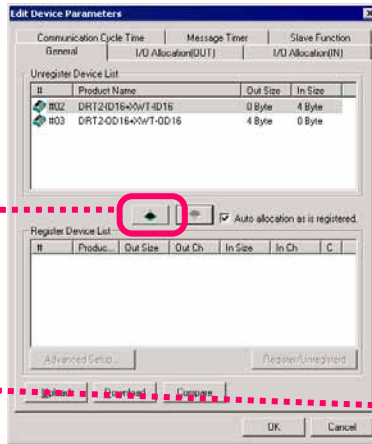
Now it can be confirmed that Slave devices on the remote I/O communications have been recognized and communications have been established.

(7) Configure DeviceNet remote I/O communications (free assignment) and register the Slave to the Master.

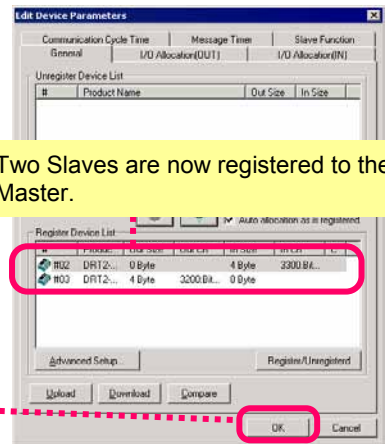
Double-click a Master Unit (CJ1W-DRM21) icon

Click twice

Click the [OK] button



Two Slaves are now registered to the Master.

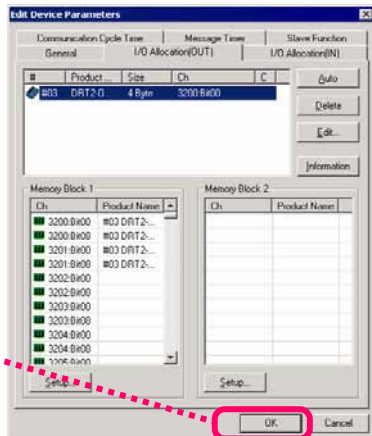


Right-click the Master Unit and select [Parameters] > [Edit]

Edit the parameters, then click the [OK] button

(8) Configure assignment of Slaves to areas of a CPU Unit. If necessary, configure the Slave parameters as well.

<Master Unit parameter edit dialog box>



Select [Network] > [Transfer [PC to Network]]

(9) Start remote I/O communication.

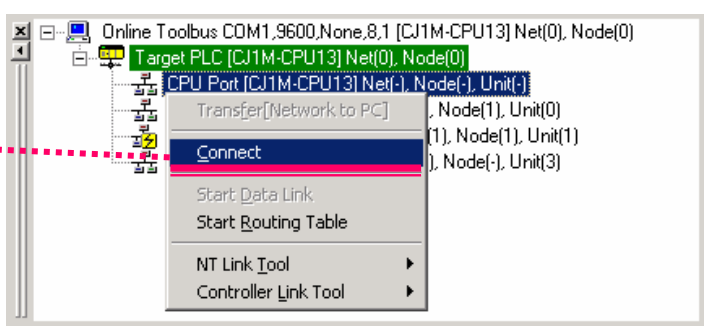


NT Link Start-Up

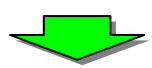
Remove NT Link communication errors and establish communications.

- ⇒ Release NS Connecting . . . message.
- ⇒ Check NS configuration through CX-Integrator.

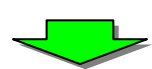
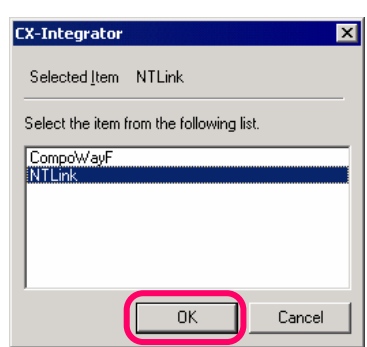
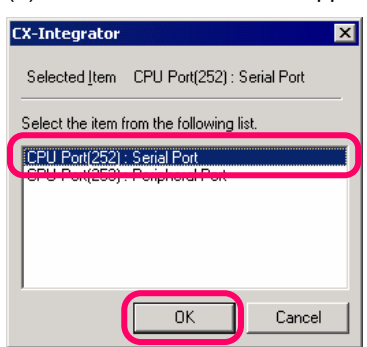
(1) Connect to PLC online, then connect to a CPU Unit through the online connection information window.



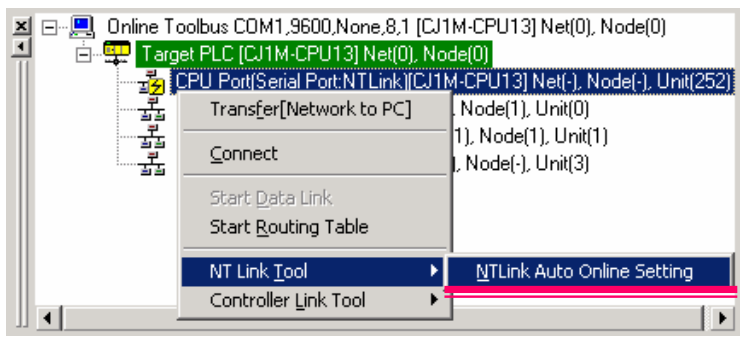
Right-click a CPU Unit under a connection target PLC in the online connection information window, then select [Connect]



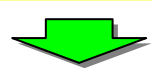
(2) Select in the order from upper link port to NT link.



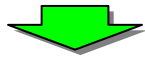
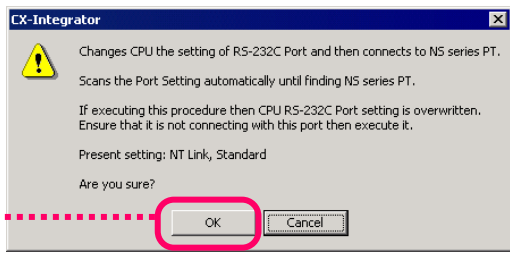
(3) Next, select [NT Link Tool] > [NTLink Auto Online Setting] from the CPU Unit.



Automatic NT Link connection function is used to automatically connect NS series PT and PLC via serial connection (NT Link). Connection is automatically performed by overwriting the PLC serial communication port settings by adjusting to NS series PT settings.

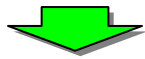
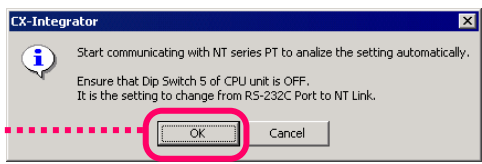


Click [OK]



(4) Check the CPU DIP switch.
 • Follow the on screen instructions to change the DIP switch.

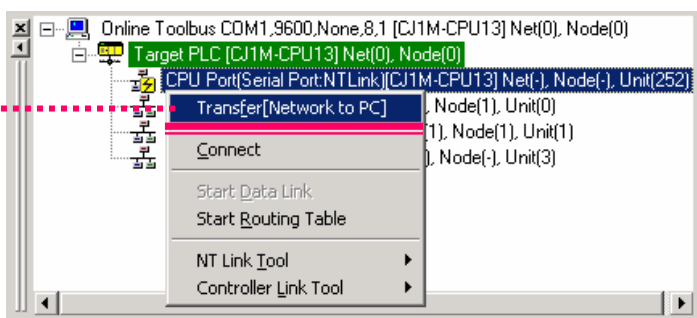
Click [OK]



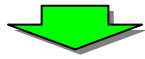
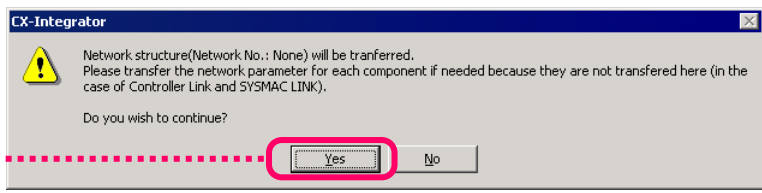
(5) Screen message Connecting . . . is now cleared.

(6) Next, upload the network configuration information of NT Link.

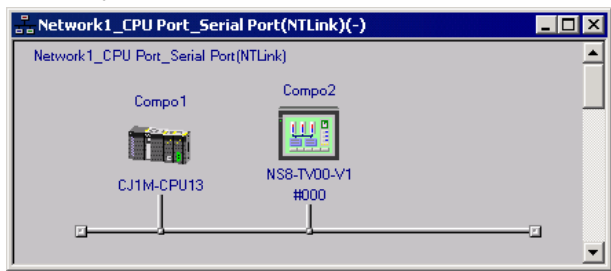
Select [Transfer [Network to PC]]



Click [Yes]



(7) After the transfer is confirmed, connected devices on the current NT Link network are displayed as shown below.



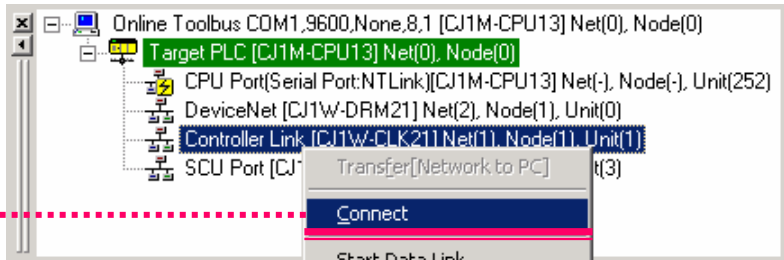


Controller Link Start-Up

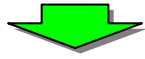
Remove Controller Link communications errors and establish communications.

- ⇒ ON state of Controller Link Master Unit's INS LED
- ⇒ Check Controller Link configuration through CX-Integrator.

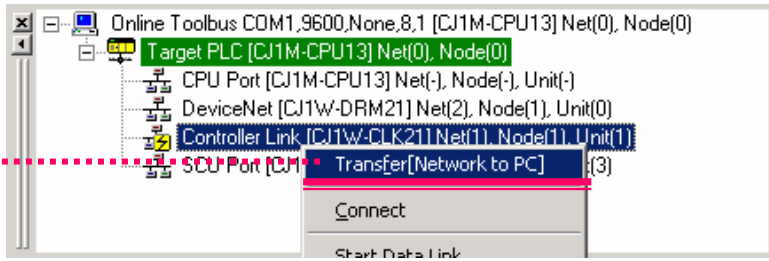
(1) Connect to PLC online, then connect to Controller Link Unit through the online connection information window.



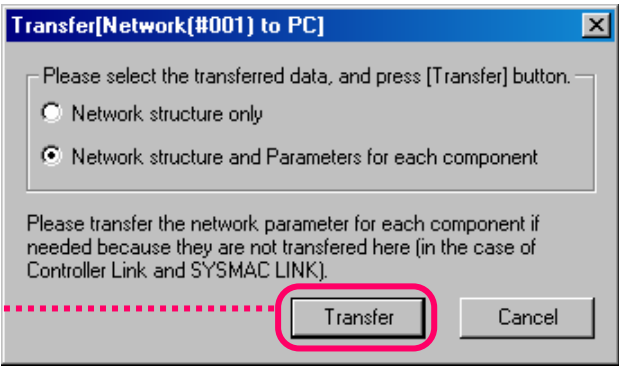
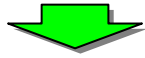
Right-click a Controller Link Unit in the online connection information window, then select [Connect]



(2) Next, upload the Controller Link network configuration information.



Select [Transfer [Network to PC]]

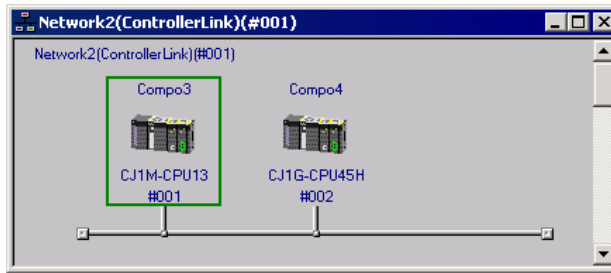


Click [Transfer]





(3) After the transfer is confirmed, connected devices on the current Controller Link network are displayed as shown below.

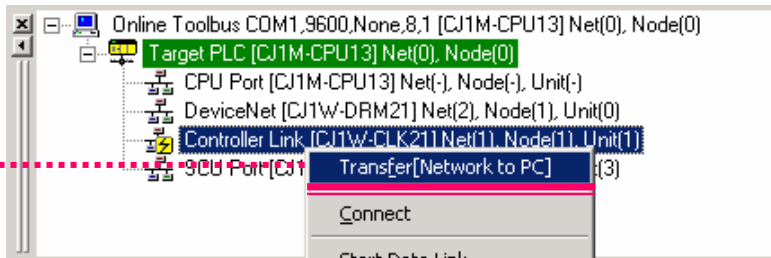


In this example, although three PLCs are actually connected through the Controller Link, in this start-up example explanation assume that only two PLCs are displayed. (One PLC did not join the communications due to incorrect Routing Table settings)

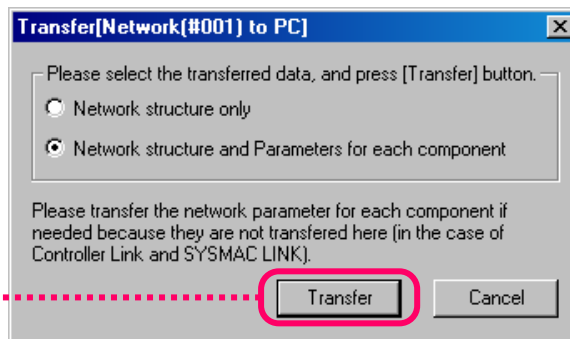


(4) Check the Routing Table and configure it correctly.
See "Confirming the Routing Table is not Configured" for configuration details.

(5) Re-upload the Controller Link network configuration information.



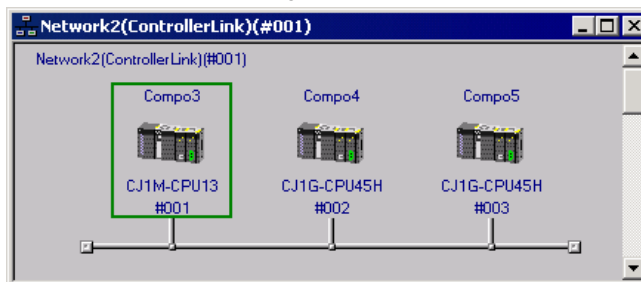
Select [Transfer [Network to PC]]



Click [Transfer]



(6) Send the network configuration from the network to the personal computer.





CompoWay/F Start-Up

Remove CompoWay/F communications errors and establish communications.

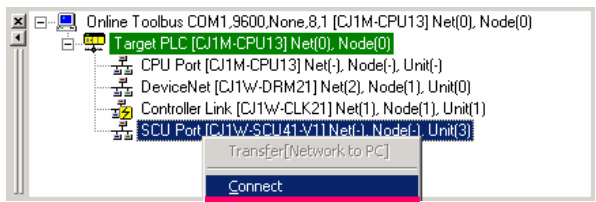
- ⇒ Check CompoWay/F configuration through CX-Integrator.
- ⇒ Configure serial communications Unit parameters.
- ⇒ Configure temperature controller communications.

This example explains the start-up of a serial communications Unit with two temperature controllers (E5CN) connected via CompoWay/F.

- Two temperature controllers (E5CN) are connected to serial communications Unit (CS1W-SCU41-V1) port no. 1 via RS485. Communication Unit numbers are #001 and #002.
- Communication settings of the serial communications Unit and the two temperature controllers are unmatched.
- Communication settings between the two temperature controllers are unmatched as well.

(1) Connect to PLC online, then connect to a CPU Unit through the online connection information window.

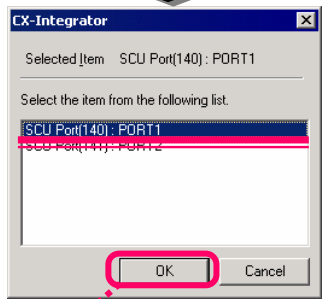
Right-click an SCU port in the online connection information window, then select [Connect]



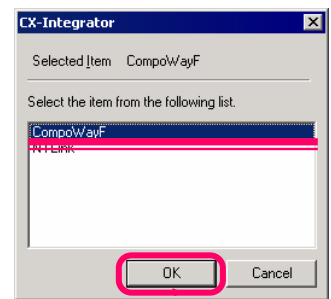
Select SCU port (140)



Select CompoWay/F



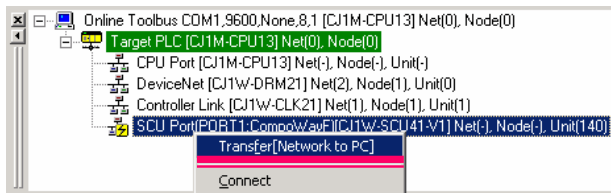
Click **OK**



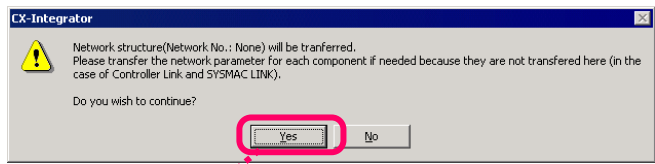
Click **OK**

Right-click an SCU port in the online connection information window, then select [Transfer [Network to PC]]

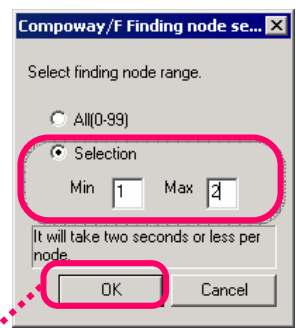
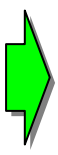
(2) Upload the CompoWay/F network configuration information.



Click [Yes] in the message dialog box

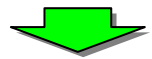


Click **Yes**



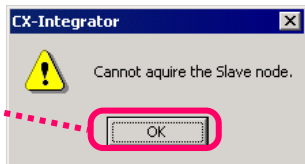
Click **OK**

Select [Selection], enter 1 for minimum and 2 for maximum values, then click the [OK] button

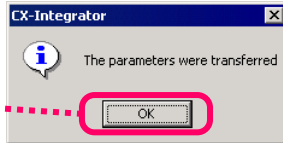




Click [OK]



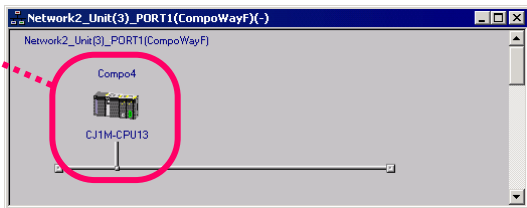
This dialog box is displayed because communication is not established between the serial communications Unit and temperature controllers.



Then click the [OK] button in the dialog box indicating completion of transmission

Place the cursor on CJ1M-CPU in the [Network Structure] window and double-click

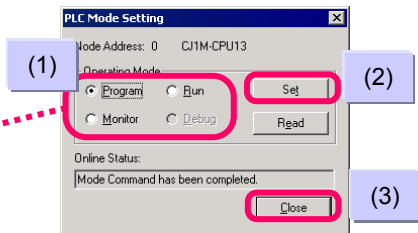
(3) Adjust the serial communications board parameters settings to those of the CompoWay/F.



The [Network Structure] window shows a CPU Unit (CJ1M-CPU13) that has a serial communications Unit, but neither of the two temperature controllers.

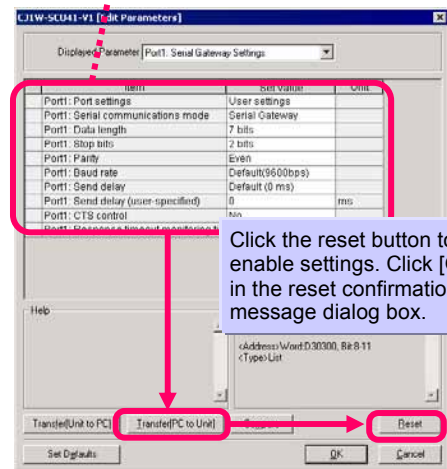
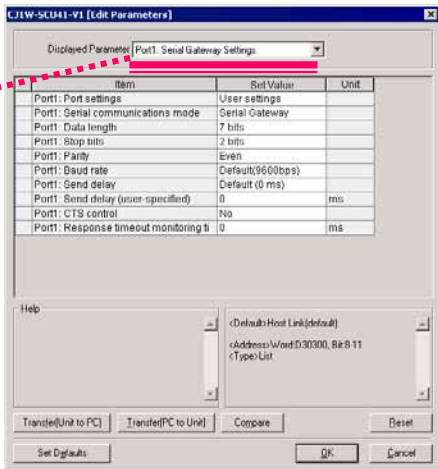
From the menu, select [Component | Mode Setting] to display the [PLC Mode Setting] dialog box

- (1) Select [Program] for operation mode
- (2) Click [Set]
- (3) Click [Close] after changing



Configure [Port1: Port settings] to [Manual] and [Port1: Serial communications mode] to [Serial Gateway]. Check other settings as well, and change if necessary.

From the [Display Parameter] pull-down menu, select [Port1: Serial Gateway Settings]

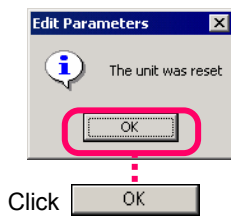
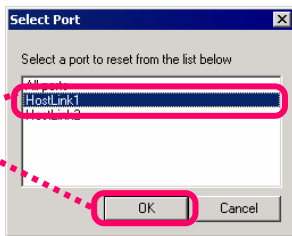


Click the reset button to enable settings. Click [OK] in the reset confirmation message dialog box.

Click [OK] in the [Edit Parameters] dialog box and close the dialog box

Confirm that settings are correct, then select the [Transfer (PC to Unit)] button. Click [OK] in the transmission confirmation message dialog box.

Select [HOSTLINK1] and click [OK] button.



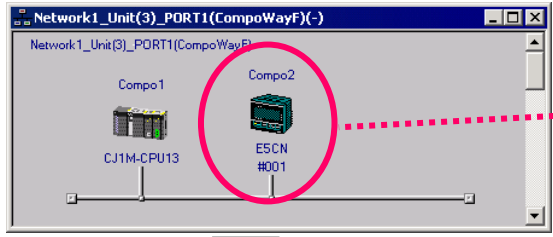
Click [OK]

Perform the step (2) in the previous page

(4) Re-upload the network configuration information of CompoWay/F. Perform the step (2) from the previous page.

Click [OK] button in a dialog box indicating completion of transmission

Only the Units for which connection is established are displayed in the [Network Structure] window, as shown on the next page.

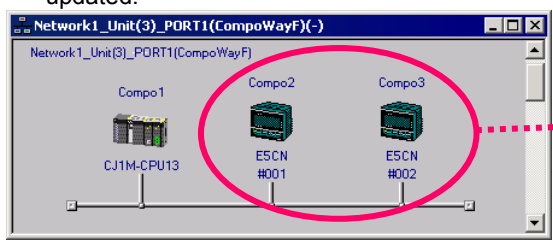


The [Network Structure] window shows only the Units for which connection is established, and Units with incorrect communications setting are not displayed.

Check the temperature controller that is not displayed properly and configure it correctly

(5) Check the settings of the temperature controller that is not displayed in the [Network Structure] window (baud rate, data length, stop bit, parity, Unit number), configure it correctly, then re-upload (Perform step (2) from two pages ago). The [Network Structure] window is updated.

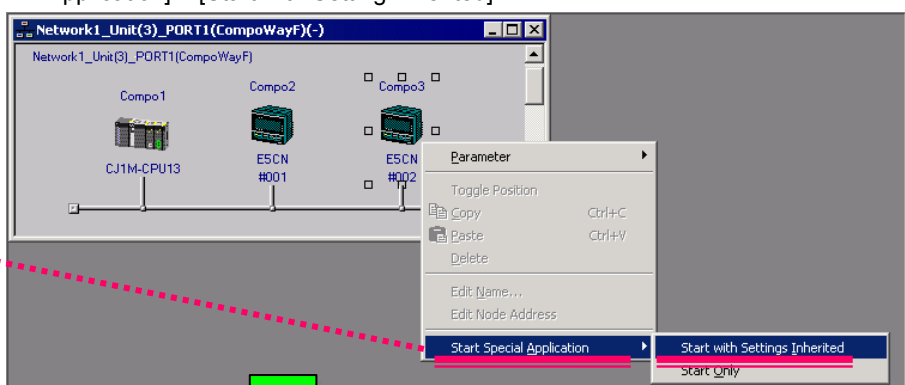
Perform step (2) from two pages ago



Now the correctly configured Unit is displayed and you can confirm that communications settings are correct.

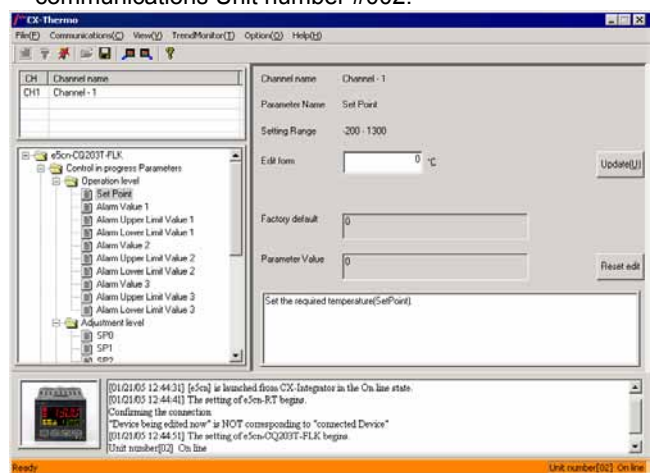
(6) Move the cursor on E5CN of communications Unit number #002, then select [Start Special Application] > [Start with Setting Inherited].

Right-click on the communications Unit number #002 icon in the [Network Structure] window, then select [Start Special Application] > [Start with Setting Inherited]



(6) Dedicated Support Software CX-Thermo is started with the same model and setting as that of the temperature controller. After parameter settings are finished, download the settings to the E5CN of communications Unit number #002.

After parameter settings are finished, select [Communications] > [Download to Device], then select either [Download all], [Download Changed Parameters], or [Download Changed from Default]

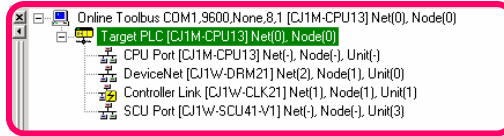




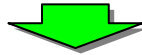
Saving System Configuration (1)

Save the system configuration for inspection after delivery.

- (1) Connect online to a PLC on a network.
The online connection information window is displayed.



All communications Units and ports of a connected PLC are automatically displayed in the online connection information window. From this window, connect to each network and save the configuration to a project file.

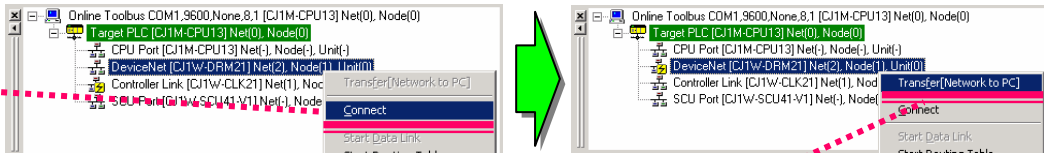


- (2) Send the network Structure of DeviceNet to the personal computer.
Connect to DeviceNet from the online connection information window. After connection is established, send the network Structure of DeviceNet to the personal computer.

Move the cursor on the DeviceNet and right-click

Select [Connect]

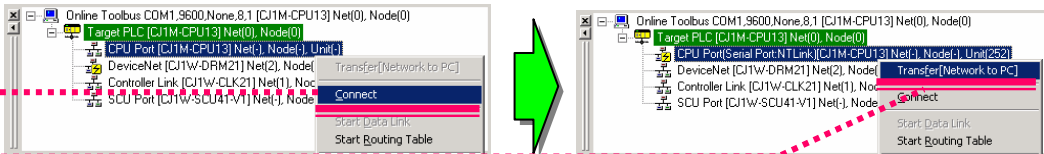
Select [Transfer [Network to PC]]



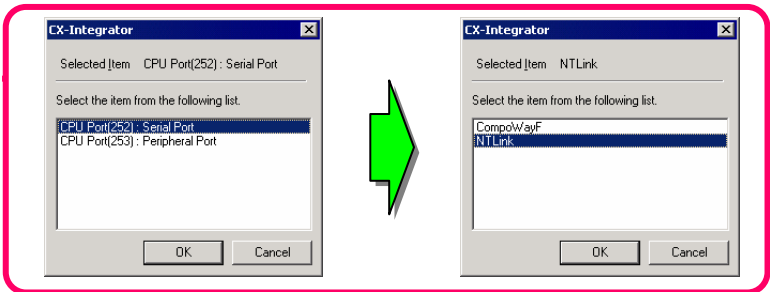
- (3) Send the network configuration of NT Link to the personal computer.
Select the connection menu on the CPU port, then select upper link port and NT Link. Next, select the transmission menu on the CPU port.

Select [Connect]

Select [Transfer [Network to PC]]



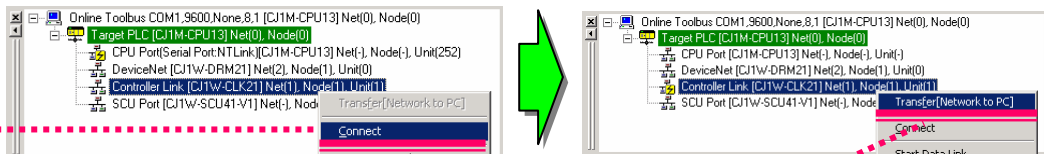
Select [Serial Port] > [NT Link]



- (4) Send the Controller Link network configuration to the personal computer.
Connect to the Controller Link network. After connection is established, send the network configuration to the personal computer.

Select [Connect]

Select [Transfer [Network to PC]]

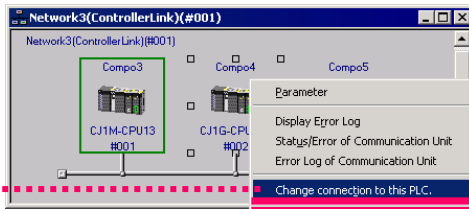


Saving System Configuration (2)

(5) Connect to a PLC on the Controller Link network.

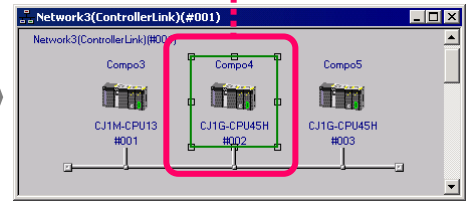
Select a remote PLC on the Controller Link network configuration screen (a PLC without a square symbol) to switch the connection destination to the PLC.

Destination PLC communication device configuration is displayed in the online connection information window.

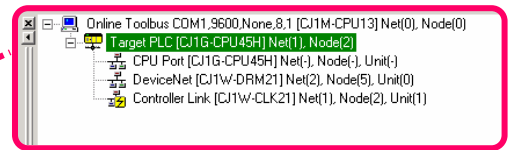


Select [Change connection to this PLC]

A Green frame is displayed on the specified remote PLC.

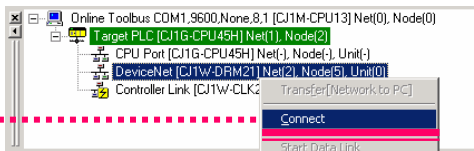


All communications Units and ports are also displayed in the online connection information window.

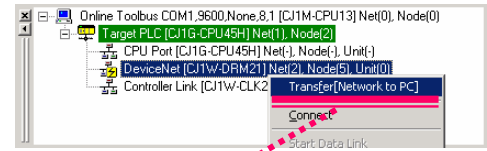


(6) Send the DeviceNet network configuration on the remote PLC.

Connect to DeviceNet from the online connection information window and send the network configuration to the personal computer.



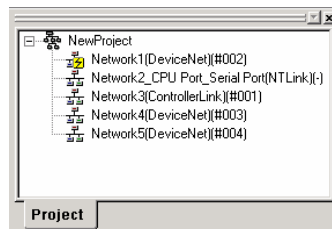
Select [Connect]



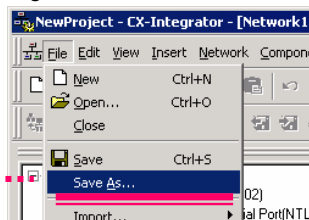
Select [Transfer [Network to PC]]

(7) Send the DeviceNet network configuration on another remote PLC.

Repeat the steps from (6) and (7). After transmission, all the networks sent to the workspace are displayed.



(8) Save all the configurations.

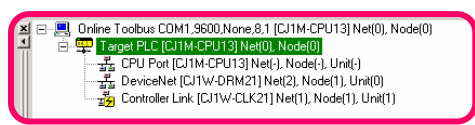


Select [Save As...]

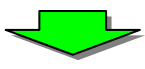
System Configuration Verification (1)

Confirm that the System has the same wiring and settings as before disassembly.
 ⇒ CX-Integrator verification is complete.

- (1) Connect online to a PLC on a network.
 The online connection information window is displayed.

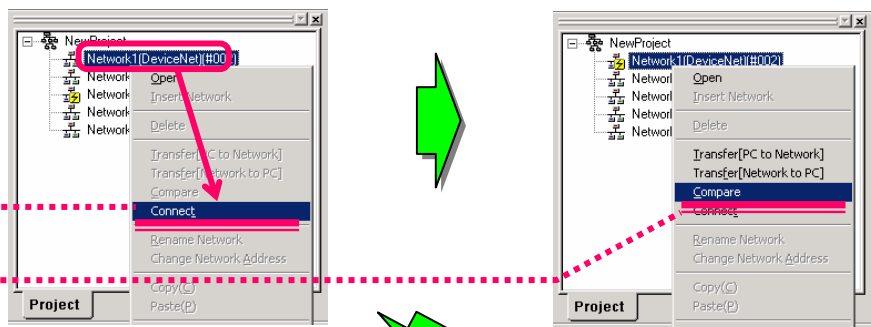


All communications Units and ports of a connected PLC are automatically displayed in the online connection information window.

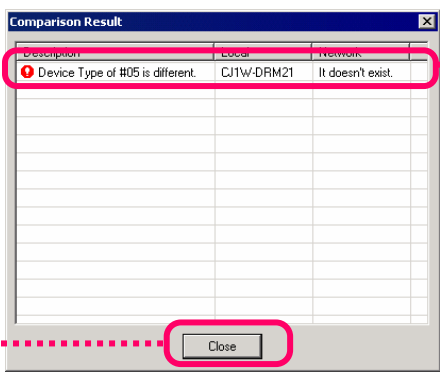


- (2) Verify the DeviceNet network configuration.
 Connect to a target DeviceNet from the workspace and verify the network Structure.

Select [Connect]
 Select [Compare]

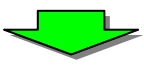


- (3) Any error found in the configuration verification will be displayed in the verification result dialog box.



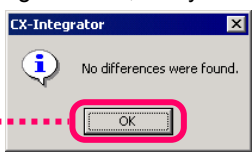
If you find a Slave that is not on the network, you may have incorrect wiring in the network.

Click [Close]



- (4) After solving the error, verify the configuration again.

Click [OK]



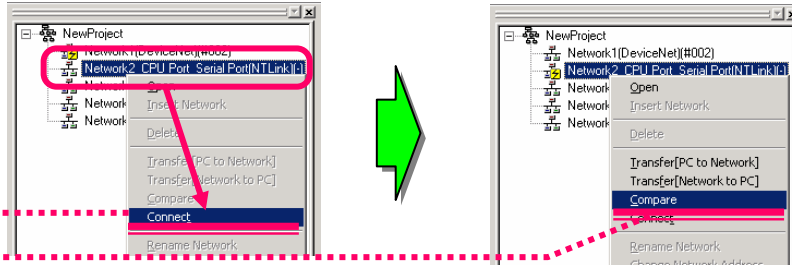
A message is displayed indicating verification matching and now it can be confirmed that the configuration is the same as that before disassembly.

System Configuration Verification (2)

(5) Verify the NT Link network.

Connect to the NT Link from the workspace and verify the network configuration. Confirm that the same verification matching message is displayed as in step (4).

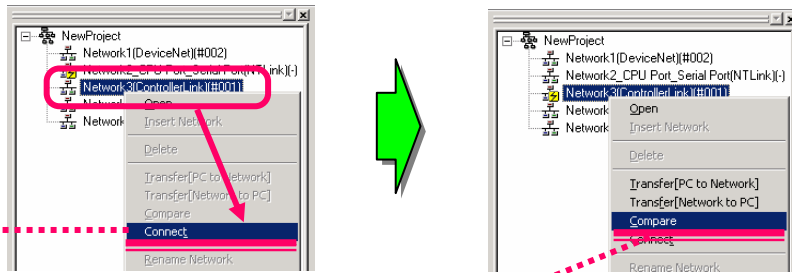
Select [Connect]
Select [Compare]



(6) Verify the Controller Link network.

Connect to DeviceNet from the online connection information window and verify the network Structure. Confirm that the same verification matching message is displayed as in step (4).

Select [Connect]
Select [Compare]

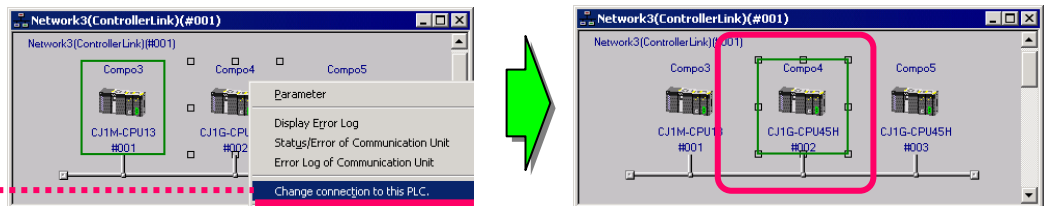


(7) Connect to a PLC on the Controller Link network.

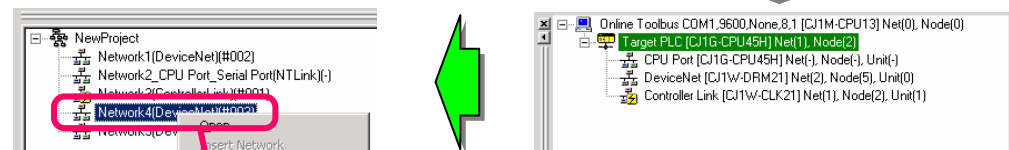
Connect to a remote PLC using the same procedure as the step (5) for saving a System configuration.

Use steps from (2) to (4) to verify the DeviceNet network.

Select [Change connection to this PLC]



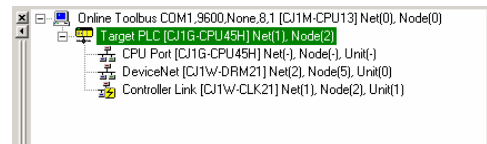
Select [Connect]



Select [Compare]

(8) Verify the DeviceNet configuration on another remote PLC.

Use the same procedure as step (2) for Network "N4" to verify the network Structure.

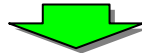
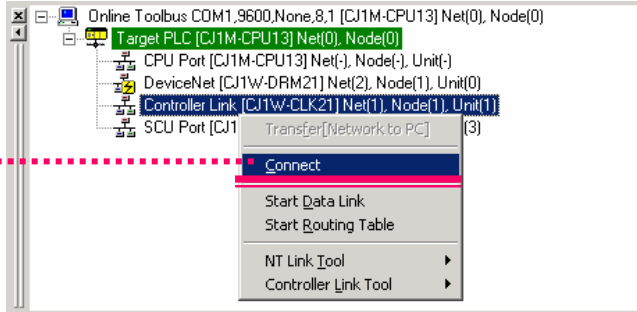


Controller Link Diagnosis

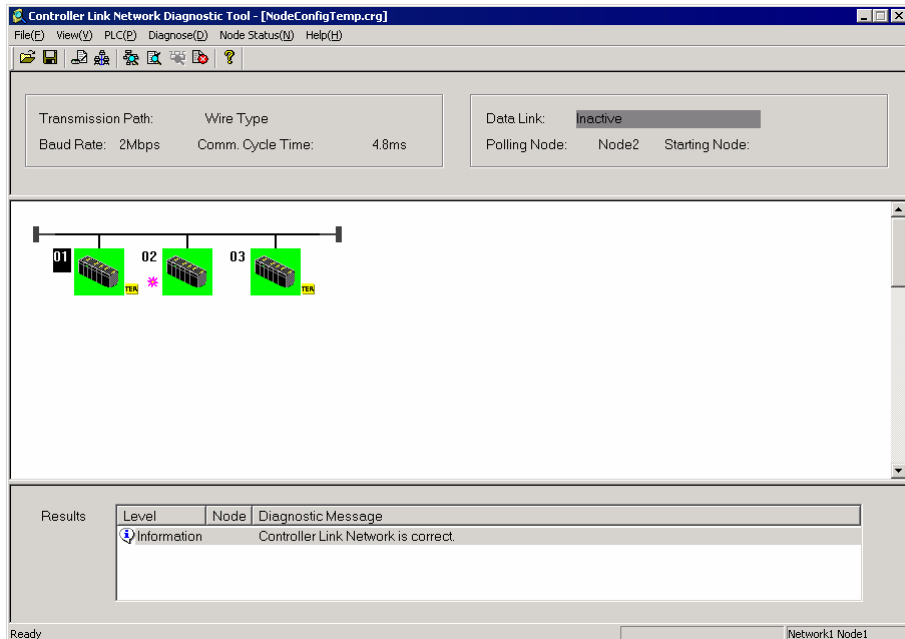
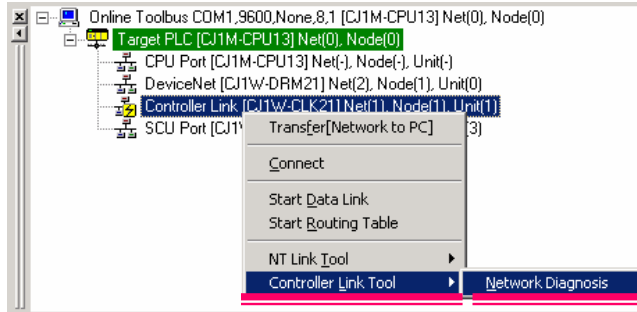
Confirm that the Controller Link connection is correct with an upper level System.
 ⇒ Diagnosis result check OK

- (1) Connect to PLC online, then connect to Controller Link Unit through the online connection information window.

Right-click a DeviceNet Unit under Target Device in the online connection information window, then select [Connect]



- (2) Next, select the Controller Link network tool.

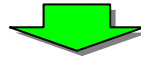
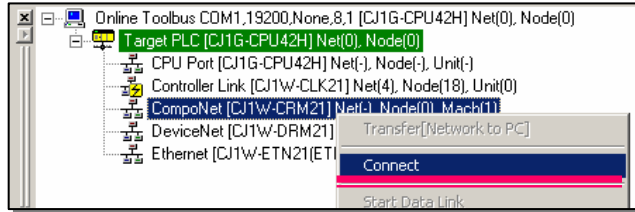


Checking CompoNet Network

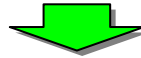
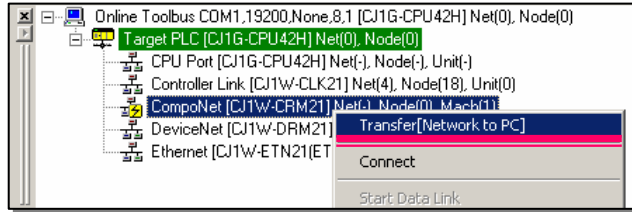
Remove CompoNet communications errors and establish communications.
Check the Slave status monitor from Master Unit.

Right-click a CompoNet Master Unit under a connection target PLC in the online connection information window, then select [Connect]

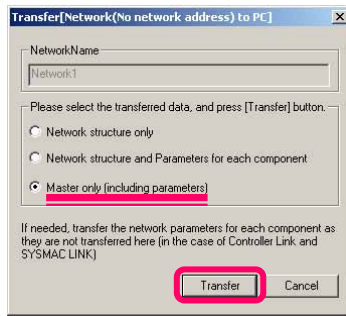
- (1) Connect to PLC online, then connect to a CompoNet through the online connection information window.



- (2) Transfer the CompoNet network configuration to the personal computer.



- (3) Select [Master only (including parameters)], then click [Transfer] button.

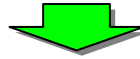
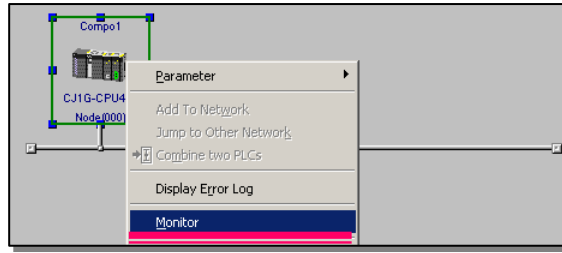


The Master Unit is displayed in the network configuration window.

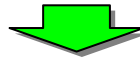
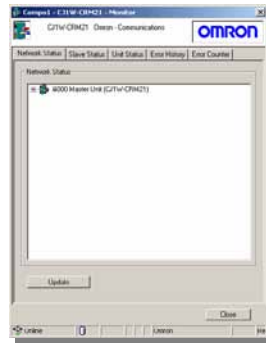


Right-click on the Master Unit icon and select [Monitor] to display the device monitor screen. Select [Status] tab

(4) Monitor a component.

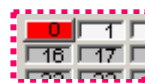


The monitor window is displayed.

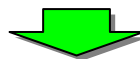
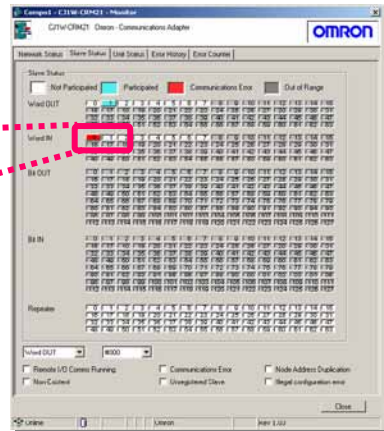


(5) Click [Slave Status] tab to check the status of Slave Units.

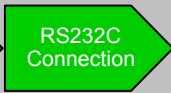
If any unit is missing or communication errors are detected, check the wiring and DIP switch settings of the applicable units to solve the problems.



An error is detected in the Slave Units indicated in red.



(6) Repeat the steps (2) and (3) to confirm that the CompoNet network is functioning properly.



Starting CX-Drive via DeviceNet

Setup Drives on DeviceNet and start CX-Drive on CX-Integrator window.
An example of 3G3MV-PDRT2 is shown below.

When opening a stored data file after starting the dedicated tool, select [Start Only]. If [Start with Setting Inherited] is selected, new data is created.

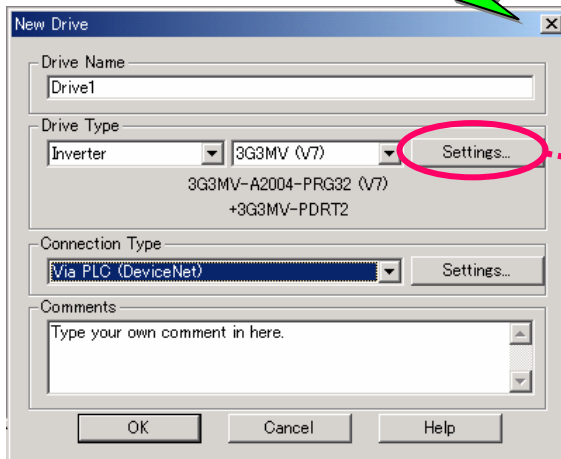
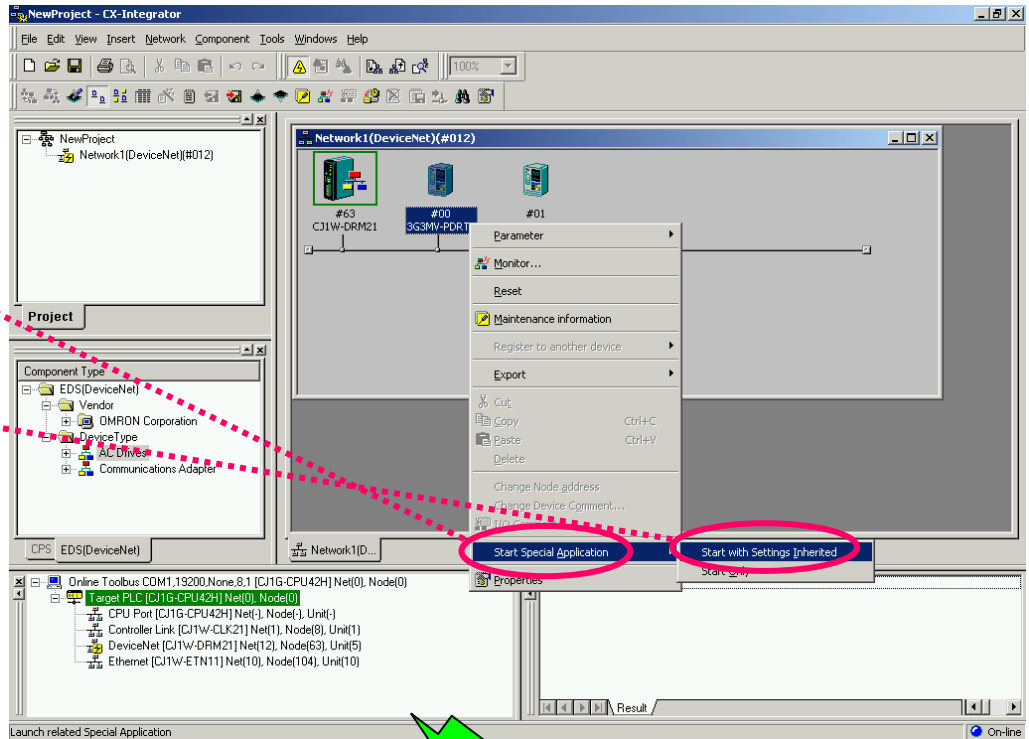
Right-click on 3G3MV-PDRT2 and select [Start Special Application]



Select [Start with Setting Inherited]




CX-Drive starts and Inverter property settings are shown



Select Settings to set detailed Inverter specifications.

Save data

Click  and save the data.

If more than one drive setting data is edited, drive data is saved by drive type and a total overview is saved in a work file.

Connecting a Servo or Inverter to a Personal Computer Serially.

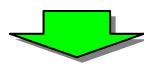
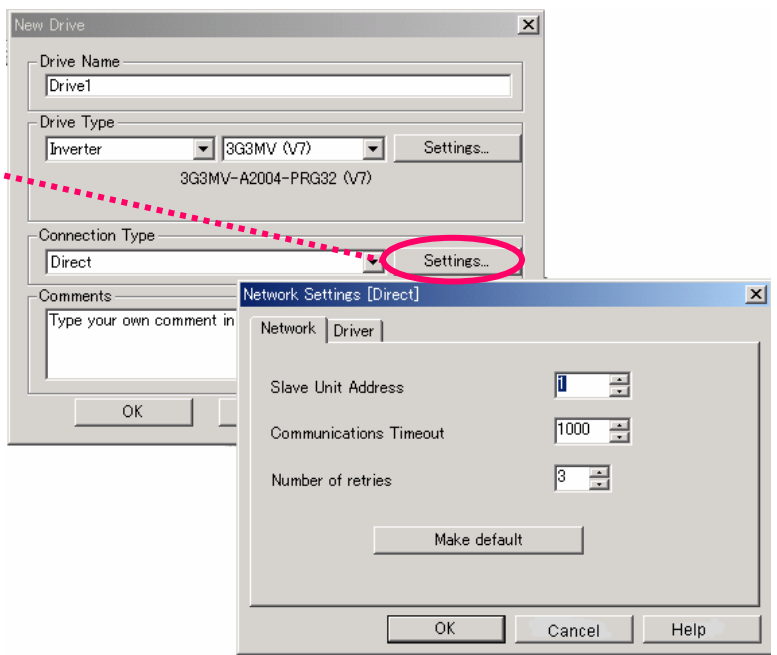
From the [Start] menu, select [Programs] > [OMRON] > [CX-One] > [CX-Drive] > [CX-Drive] to start CX-Drive when you connect Servo or Inverter with serial connection to your computer.

Select [File] > [New] to create new data if the drive specifications are known. If the drive is already connected, select [File] > [Autodetect] to detect the model and specification of this connected drive.

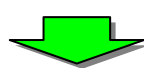
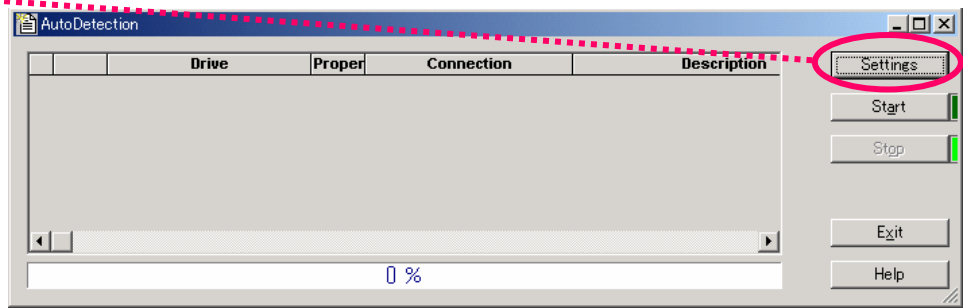
Select [Settings]

Set communication Specifications


To execute Autodetect, select [Settings] and define the search conditions



Or, select [File] > [Autodetect] to detect the connected drive specification.



Save data

Click  and save the data.

Terms and Conditions of Sale

1. **Offer; Acceptance.** These terms and conditions (these "Terms") are deemed part of all quotes, agreements, purchase orders, acknowledgments, price lists, catalogs, manuals, brochures and other documents, whether electronic or in writing, relating to the sale of products or services (collectively, the "Products") by Omron Electronics LLC and its subsidiary companies ("Omron"). Omron objects to any terms or conditions proposed in Buyer's purchase order or other documents which are inconsistent with, or in addition to, these Terms.
2. **Prices; Payment Terms.** All prices stated are current, subject to change without notice by Omron. Omron reserves the right to increase or decrease prices on any unshipped portions of outstanding orders. Payments for Products are due net 30 days unless otherwise stated in the invoice.
3. **Discounts.** Cash discounts, if any, will apply only on the net amount of invoices sent to Buyer after deducting transportation charges, taxes and duties, and will be allowed only if (i) the invoice is paid according to Omron's payment terms and (ii) Buyer has no past due amounts.
4. **Interest.** Omron, at its option, may charge Buyer 1-1/2% interest per month or the maximum legal rate, whichever is less, on any balance not paid within the stated terms.
5. **Orders.** Omron will accept no order less than \$200 net billing.
6. **Governmental Approvals.** Buyer shall be responsible for, and shall bear all costs involved in, obtaining any government approvals required for the importation or sale of the Products.
7. **Taxes.** All taxes, duties and other governmental charges (other than general real property and income taxes), including any interest or penalties thereon, imposed directly or indirectly on Omron or required to be collected directly or indirectly by Omron for the manufacture, production, sale, delivery, importation, consumption or use of the Products sold hereunder (including customs duties and sales, excise, use, turnover and license taxes) shall be charged to and remitted by Buyer to Omron.
8. **Financial.** If the financial position of Buyer at any time becomes unsatisfactory to Omron, Omron reserves the right to stop shipments or require satisfactory security or payment in advance. If Buyer fails to make payment or otherwise comply with these Terms or any related agreement, Omron may (without liability and in addition to other remedies) cancel any unshipped portion of Products sold hereunder and stop any Products in transit until Buyer pays all amounts, including amounts payable hereunder, whether or not then due, which are owing to it by Buyer. Buyer shall in any event remain liable for all unpaid accounts.
9. **Cancellation; Etc.** Orders are not subject to rescheduling or cancellation unless Buyer indemnifies Omron against all related costs or expenses.
10. **Force Majeure.** Omron shall not be liable for any delay or failure in delivery resulting from causes beyond its control, including earthquakes, fires, floods, strikes or other labor disputes, shortage of labor or materials, accidents to machinery, acts of sabotage, riots, delay in or lack of transportation or the requirements of any government authority.
11. **Shipping; Delivery.** Unless otherwise expressly agreed in writing by Omron:
 - a. Shipments shall be by a carrier selected by Omron; Omron will not drop ship except in "break down" situations.
 - b. Such carrier shall act as the agent of Buyer and delivery to such carrier shall constitute delivery to Buyer;
 - c. All sales and shipments of Products shall be FOB shipping point (unless otherwise stated in writing by Omron), at which point title and risk of loss shall pass from Omron to Buyer; provided that Omron shall retain a security interest in the Products until the full purchase price is paid;
 - d. Delivery and shipping dates are estimates only; and
 - e. Omron will package Products as it deems proper for protection against normal handling and extra charges apply to special conditions.
12. **Claims.** Any claim by Buyer against Omron for shortage or damage to the Products occurring before delivery to the carrier must be presented in writing to Omron within 30 days of receipt of shipment and include the original transportation bill signed by the carrier noting that the carrier received the Products from Omron in the condition claimed.
13. **Warranties.** (a) **Exclusive Warranty.** Omron's exclusive warranty is that the Products will be free from defects in materials and workmanship for a period of twelve months from the date of sale by Omron (or such other period expressed in writing by Omron). Omron disclaims all other warranties, express or implied. (b) **Limitations.** OMRON MAKES NO WARRANTY OR REPRESENTATION, EXPRESS OR IMPLIED, ABOUT NON-INFRINGEMENT, MERCHANTABILITY OR FITNESS FOR A PARTICULAR PURPOSE OF THE PRODUCTS. BUYER ACKNOWLEDGES THAT IT ALONE HAS DETERMINED THAT THE PRODUCTS WILL SUITABLY MEET THE REQUIREMENTS OF THEIR INTENDED USE. Omron further disclaims all warranties and responsibility of any type for claims or expenses based on infringement by the Products or otherwise of any intellectual property right. (c) **Buyer Remedy.** Omron's sole obligation hereunder shall be, at Omron's election, to (i) replace (in the form originally shipped with Buyer responsible for labor charges for removal or replacement thereof) the non-complying Product, (ii) repair the non-complying Product, or (iii) repay or credit Buyer an amount equal to the purchase price of the non-complying Product; provided that in no event shall Omron be responsible for warranty, repair, indemnity or any other claims or expenses regarding the Products unless Omron's analysis confirms that the Products were properly handled, stored, installed and maintained and not subject to contamination, abuse, misuse or inappropriate modification. Return of any Products by Buyer must be approved in writing by Omron before shipment. Omron Companies shall not be liable for the suitability or unsuitability or the results from the use of Products in combination with any electrical or electronic components, circuits, system assemblies or any other materials or substances or environments. Any advice, recommendations or information given orally or in writing, are not to be construed as an amendment or addition to the above warranty. See <http://www.omron247.com> or contact your Omron representative for published information.
14. **Limitation on Liability; Etc.** OMRON COMPANIES SHALL NOT BE LIABLE FOR SPECIAL, INDIRECT, INCIDENTAL, OR CONSEQUENTIAL DAMAGES, LOSS OF PROFITS OR PRODUCTION OR COMMERCIAL LOSS IN ANY WAY CONNECTED WITH THE PRODUCTS, WHETHER SUCH CLAIM IS BASED IN CONTRACT, WARRANTY, NEGLIGENCE OR STRICT LIABILITY. Further, in no event shall liability of Omron Companies exceed the individual price of the Product on which liability is asserted.
15. **Indemnities.** Buyer shall indemnify and hold harmless Omron Companies and their employees from and against all liabilities, losses, claims, costs and expenses (including attorney's fees and expenses) related to any claim, investigation, litigation or proceeding (whether or not Omron is a party) which arises or is alleged to arise from Buyer's acts or omissions under these Terms or in any way with respect to the Products. Without limiting the foregoing, Buyer (at its own expense) shall indemnify and hold harmless Omron and defend or settle any action brought against such Companies to the extent based on a claim that any Product made to Buyer specifications infringed intellectual property rights of another party.
16. **Property; Confidentiality.** Any intellectual property in the Products is the exclusive property of Omron Companies and Buyer shall not attempt to duplicate it in any way without the written permission of Omron. Notwithstanding any charges to Buyer for engineering or tooling, all engineering and tooling shall remain the exclusive property of Omron. All information and materials supplied by Omron to Buyer relating to the Products are confidential and proprietary, and Buyer shall limit distribution thereof to its trusted employees and strictly prevent disclosure to any third party.
17. **Export Controls.** Buyer shall comply with all applicable laws, regulations and licenses regarding (i) export of products or information; (ii) sale of products to "forbidden" or other proscribed persons; and (iii) disclosure to non-citizens of regulated technology or information.
18. **Miscellaneous.** (a) **Waiver.** No failure or delay by Omron in exercising any right and no course of dealing between Buyer and Omron shall operate as a waiver of rights by Omron. (b) **Assignment.** Buyer may not assign its rights hereunder without Omron's written consent. (c) **Law.** These Terms are governed by the law of the jurisdiction of the home office of the Omron company from which Buyer is purchasing the Products (without regard to conflict of law principles). (d) **Amendment.** These Terms constitute the entire agreement between Buyer and Omron relating to the Products, and no provision may be changed or waived unless in writing signed by the parties. (e) **Severability.** If any provision hereof is rendered ineffective or invalid, such provision shall not invalidate any other provision. (f) **Setoff.** Buyer shall have no right to set off any amounts against the amount owing in respect of this invoice. (g) **Definitions.** As used herein, "including" means "including without limitation"; and "Omron Companies" (or similar words) mean Omron Corporation and any direct or indirect subsidiary or affiliate thereof.

Certain Precautions on Specifications and Use

1. **Suitability of Use.** Omron Companies shall not be responsible for conformity with any standards, codes or regulations which apply to the combination of the Product in the Buyer's application or use of the Product. At Buyer's request, Omron will provide applicable third party certification documents identifying ratings and limitations of use which apply to the Product. This information by itself is not sufficient for a complete determination of the suitability of the Product in combination with the end product, machine, system, or other application or use. Buyer shall be solely responsible for determining appropriateness of the particular Product with respect to Buyer's application, product or system. Buyer shall take application responsibility in all cases but the following is a non-exhaustive list of applications for which particular attention must be given:
 - (i) Outdoor use, uses involving potential chemical contamination or electrical interference, or conditions or uses not described in this document.
 - (ii) Use in consumer products or any use in significant quantities.
 - (iii) Energy control systems, combustion systems, railroad systems, aviation systems, medical equipment, amusement machines, vehicles, safety equipment, and installations subject to separate industry or government regulations.
 - (iv) Systems, machines and equipment that could present a risk to life or property. Please know and observe all prohibitions of use applicable to this Product.

NEVER USE THE PRODUCT FOR AN APPLICATION INVOLVING SERIOUS RISK TO LIFE OR PROPERTY OR IN LARGE QUANTITIES WITHOUT ENSURING THAT THE SYSTEM AS A WHOLE HAS BEEN DESIGNED TO ADDRESS THE RISKS, AND THAT THE OMRON'S PRODUCT IS PROPERLY RATED AND INSTALLED FOR THE INTENDED USE WITHIN THE OVERALL EQUIPMENT OR SYSTEM.
2. **Programmable Products.** Omron Companies shall not be responsible for the user's programming of a programmable Product, or any consequence thereof.
3. **Performance Data.** Data presented in Omron Company websites, catalogs and other materials is provided as a guide for the user in determining suitability and does not constitute a warranty. It may represent the result of Omron's test conditions, and the user must correlate it to actual application requirements. Actual performance is subject to the Omron's Warranty and Limitations of Liability.
4. **Change in Specifications.** Product specifications and accessories may be changed at any time based on improvements and other reasons. It is our practice to change part numbers when published ratings or features are changed, or when significant construction changes are made. However, some specifications of the Product may be changed without any notice. When in doubt, special part numbers may be assigned to fix or establish key specifications for your application. Please consult with your Omron's representative at any time to confirm actual specifications of purchased Product.
5. **Errors and Omissions.** Information presented by Omron Companies has been checked and is believed to be accurate; however, no responsibility is assumed for clerical, typographical or proofreading errors or omissions.

OMRON

Automation...simple...powerful.

OMRON ELECTRONICS LLC • THE AMERICAS HEADQUARTERS

Schaumburg, IL USA • 847.843.7900 • 800.556.6766 • www.omron247.com

OMRON CANADA, INC. • HEAD OFFICE

Toronto, ON, Canada • 416.286.6465 • 866.986.6766 • www.omron.ca

OMRON ELETRÔNICA DO BRASIL LTDA • HEAD OFFICE

São Paulo, SP, Brasil • 55.11.2101.6300 • www.omron.com.br

OMRON ELECTRONICS MEXICO SA DE CV • HEAD OFFICE

Apodaca, N.L. • 52.811.156.99.10 • mela@omron.com

R145-E1-03

Note: Specifications are subject to change.

OMRON ARGENTINA • SALES OFFICE

Cono Sur • 54.11.4787.1129

OMRON CHILE • SALES OFFICE

Santiago 56.2206.4592

OTHER OMRON LATIN AMERICA SALES

56.2206.4592

© 2008 Omron Electronics LLC

Printed in U.S.A.