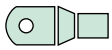
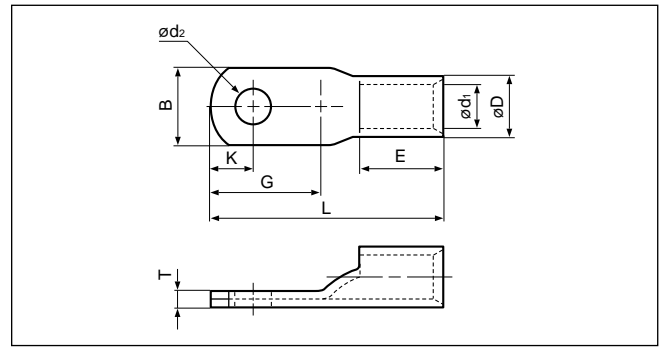
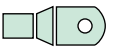


Solderless terminals



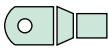
COPPER TUBULAR LUGS (One-hole)



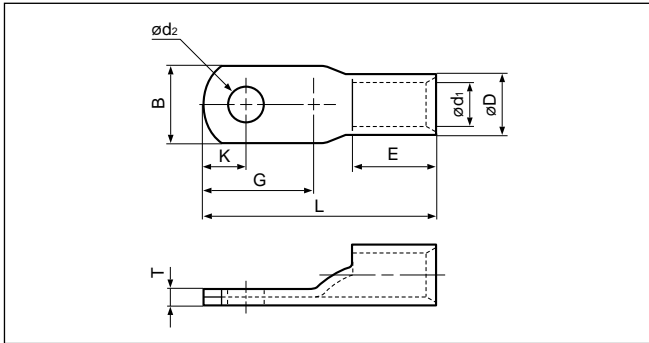
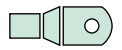
Applicable Wire AWG#(mm ²)	Stud size		Part No.	Standard	Dimensions mm (in.)									Tool No.										Qty/box				
	American	Metric			ød ₂	B	L	E	G	K	øD	ød ₁	T	YHT-2210	YHT-8S	YA-1	YA-2	YA-4	YA-5	YPT-60N	YPT-160-1	YET-60-1	YET-150-2		YET-300-1	YET-300N		
16 to 14 (1.04 to 2.63)	8	4	TU2-4		4.3 (.169)	7.0 (.276)	20.0 (.787)	7.0 (.276)	9.5 (.374)	4.0(.157)	4.0 (.157)	2.3 (.091)	1.3 (.051)	0	0	0	0											2,000
12 to 10 (2.63 to 6.64)	8	4	TU5.5-4		4.3 (.169)	9.0 (.354)	21.5 (.847)	8.5 (.335)	9.5 (.374)	4.0(.157)	5.5 (.217)	3.4 (.134)	1.7 (.067)	0	0	0	0											1,000
8 (6.64 to 10.52)	8	4	TU8-4		4.3 (.169)	10.0 (.394)	28.5(1.122)	11.0 (.433)	12.5 (.492)	5.8(.228)	7.1 (.280)	4.5 (.177)	2.4 (.095)	0			0	0	0	0	0	0	0	0	0	0	500	
	10	5	TU8-5		5.3 (.209)																							
6 (10.52 to 16.78)	10	5	TU14-5		5.3 (.209)	13.0 (.512)	34.0(1.339)	14.0 (.551)	14.5 (.571)	6.5(.256)	9.0 (.354)	5.8 (.228)	3.0 (.118)				0	0	0	0	0	0	0	0	0	0	250	
	1/4	6	TU14-6		6.4 (.252)																							
	5/16	8	TU14-8		9.0 (.354)																							
4 (16.78 to 26.66)	10	5	TU22-5		5.3 (.209)	16.0 (.630)	37.5(1.476)	15.0 (.591)	17.0 (.669)	7.0(.276)	11.4 (.449)	7.7 (.303)	3.6 (.142)				0	0	0	0	0	0	0	0	0	0	200	
	1/4	6	TU22-6		6.4 (.252)																							
	5/16	8	TU22L-8		9.0 (.354)		39.5(1.555)		19.0 (.748)	8.5(.335)																		
2 (26.66 to 42.42)	10	5	TU38-5		5.3 (.209)	19.0 (.748)	44.0(1.732)	18.0 (.709)	19.0 (.748)	8.5(.335)	13.3 (.524)	9.4 (.370)	3.8 (.150)				0	0	0	0	0	0	0	0	0	0	100	
	1/4	6	TU38-6		6.4 (.252)																							
	5/16	8	TU38L-8		9.0 (.354)																							
	3/8	10	TU38L-10		11.0 (.433)																							
	1/2	12	TU38L-12		14.0 (.551)																							
1/0 (42.42 to 60.57)	1/4	6	TU60-6		6.4 (.252)	22.0 (.866)	55.5(2.185)	20.0 (.787)	26.0(1.024)	10.5(.413)	15.4 (.606)	11.4 (.449)	4.0 (.157)				0	0	0	0	0	0	0	0	0	0	50	
	5/16	8	TU60-8		9.0 (.354)																							
	3/8	10	TU60-10		11.0 (.433)																							
	3/8	10	TU60L-10		11.0 (.433)																							
	7/16	11	TU60L-11		12.0 (.472)		58.0(2.284)		28.5(1.122)	13.0(.512)																		
2/0 (60.57 to 76.28)	1/4	6	TU70-6		6.4 (.252)	25.0 (.984)	58.5(2.303)	22.0 (.866)	26.0(1.024)	10.5(.413)	17.5 (.689)	13.3 (.524)	4.3 (.169)				0	0	0	0	0	0	0	0	0	0	50	
	5/16	8	TU70-8		9.0 (.354)																							
	3/8	10	TU70L-10		11.0 (.433)		62.0(2.441)		29.5(1.161)	13.5(.532)																		
	1/2	12	TU70L-12		14.0 (.551)																							
3/0 (76.28 to 96.3)	1/4	6	TU80-6		6.4 (.252)	27.5 (1.083)	65.0(2.559)	24.5 (.965)	28.5(1.122)	11.5(.453)	19.4 (.764)	14.5 (.571)	5.1 (.201)				0	0	0	0	0	0	0	0	0	0	25	
	5/16	8	TU80-8		9.0 (.354)																							
	3/8	10	TU80-10		11.0 (.433)																							
	3/8	10	TU80L-10		11.0 (.433)																							
	7/16	11	TU80L-11		12.0 (.472)		69.0(2.717)		32.3(1.272)	13.5(.532)																		
4/0 (96.3 to 117.2)	1/2	12	TU80L-12		14.0 (.551)																							
	5/16	8	TU100-8		9.0 (.354)	31.5 (1.240)	71.0(2.795)	25.5 (1.004)	31.3(1.232)	14.5(.571)	22.0 (.866)	16.4 (.646)	5.7 (.224)				0	0	0	0	0	0	0	0	0	0	25	
	3/8	10	TU100-10		11.0 (.433)																							
	7/16	11	TU100M-11		12.0 (.472)		75.0(2.953)		35.3(1.390)																			
	7/16	11	TU100L-11		12.0 (.472)		78.5(3.091)		38.8(1.528)																			
	1/2	12	TU100M-12		14.0 (.551)		75.0(2.953)		35.3(1.390)	16.5(.650)																		
	1/2	12	TU100L-12		14.0 (.551)		78.5(3.091)		38.8(1.528)																			
	5/8	16	TU100M-16		18.0 (.709)		75.0(2.953)		35.3(1.390)																			
5/8	16	TU100L-16		18.0 (.709)		78.5(3.091)		38.8(1.528)																				

Note:1) Delivery lead times may vary depending on the product. Contact JST for details.

Solderless terminals



COPPER TUBULAR LUGS (One-hole)

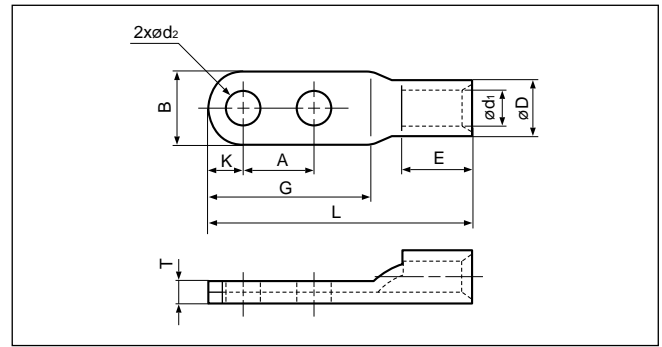
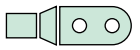
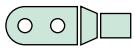


Applicable Wire AWG# (mm²)	Stud size		Part No.	Standard	Dimensions mm (in.)									Tool No.									Qty/box																													
	American	Metric			Ød ₂	B	L	E	G	K	ØD	Ød ₁	T	YHT-2210	YHT-8S	YA-1	YA-2	YA-4	YA-5	YPT-60N	YPT-150-1	YPT-60-1		YPT-150-2	YPT-300-1	YPT-300N																										
250/300 (117.2 to 152.05)	3/8	10	TU150-10		11.0 (.433)	38.0 (1.496)	88.0(3.465)	34.5 (1.358)	36.3(1.429)	16.5 (.650)	ØD	Ød ₁	T																																							
	7/16	11	TU150-11		12.0 (.472)									95.5(3.760)	43.8(1.724)	26.5 (1.043)	19.5 (.768)	7.0 (.276)																																		
	1/2	12	TU150-12		14.0 (.551)														98.0(3.858)	46.3(1.823)	20.0 (.787)	ØD	Ød ₁	T																												
	5/8	16	TU150M-16		18.0 (.709)																				95.5(3.760)	43.8(1.724)	ØD	Ød ₁	T												0	0	0	0								
	5/8	16	TU150L-16		18.0 (.709)																									98.0(3.858)	46.3(1.823)	ØD	Ød ₁	T																		
	3/4	20	TU150M-20		22.0 (.866)																														ØD	Ød ₁	T															
3/4	20	TU150L-20		22.0 (.866)																																																
350 (152.05 to 192.60)	3/8	10	TU180-10		11.0 (.433)	41.0 (1.614)	92.0(3.622)	36.5 (1.437)	38.3(1.508)	16.5 (.650)	ØD	Ød ₁	T																																							
	7/16	11	TU180-11		12.0 (.472)									104.0(4.095)	50.0(1.969)	22.5 (.886)	28.5 (1.122)	21.0 (.827)	7.7 (.303)																																	
	1/2	12	TU180-12		14.0 (.551)															109.0(4.291)	37.0 (1.457)	46.3(1.823)	21.0 (.827)	32.5 (1.280)	24.0 (.945)	8.5 (.335)																					0	0				
	5/8	16	TU180M-16		18.0 (.709)																						113.0(4.449)	58.0(2.284)	26.0(1.024)	ØD	Ød ₁	T																				
400 (192.60 to 242.27)	1/2	12	TU200-12		14.0 (.551)	46.0 (1.811)	101.0(3.976)	37.0 (1.457)	46.3(1.823)	21.0 (.827)	32.5 (1.280)	24.0 (.945)	8.5 (.335)																															0	0							
	5/8	16	TU200M-16		18.0 (.709)									121.0(4.764)	60.0(2.362)	29.0(1.142)	ØD	Ød ₁	T																																	
	3/4	20	TU200L-20		22.0 (.866)															127.0(5.000)	66.0(2.598)	ØD	Ød ₁	T																												
600/650 (242.27 to 325)	3/8	10	TU325-10		11.0 (.433)	53.0 (2.087)	112.5(4.429)	42.0 (1.654)	51.8(2.039)	23.0 (.906)	ØD	Ød ₁	T																																							
	7/16	11	TU325-11		12.0 (.472)									121.0(4.764)	60.0(2.362)	29.0(1.142)	ØD	Ød ₁	T																																	
	1/2	12	TU325-12		14.0 (.551)															127.0(5.000)	66.0(2.598)	ØD	Ød ₁	T																												
	5/8	16	TU325M-16		18.0 (.709)																				ØD	Ød ₁	T																									
	5/8	16	TU325L-16		18.0 (.709)																																															

Note:1) Delivery lead times may vary depending on the product. Contact JST for details.

Solderless terminals

COPPER TUBULAR LUGS (Two-holes)



Applicable Wire AWG#(mm ²)	Stud size		Part No.	Standard	Dimensions mm (in.)										Tool No.							Qty/box		
	American	Metric			ød ₂	B	L	E	G	K	A	øD	ød ₁	T	YHT-8S	YA-4	YA-5	YPT-60N	YPT-150-1	YET-60-1	YET-150-2		YET-300-1	YET-300N
8 (6.64 to 10.52)	8	4	TU8A-4	4.3(.169)	10.0 (.394)	40.5(1.595)	11.0 (.433)	25.0 (.984)	5.8(.228)	12.0 (.472)	7.1 (.280)	4.5 (.177)	2.4 (.095)	0	0	0	0	0	0	0	0	0	0	250
	10	5	TU8A-5	5.3(.209)																				
	1/4	6	TU8A-6	6.4(.252)																				
6 (10.52 to 16.78)	8	4	TU14A-4	4.3(.169)	13.0 (.512)	45.5(1.791)	14.0 (.551)	26.5(1.043)	6.5(.256)	12.0 (.472)	9.0 (.354)	5.8 (.228)	3.0 (.118)	0	0	0	0	0	0	0	0	0	0	250
	10	5	TU14A-5	5.3(.209)																				
	1/4	6	TU14A-6	6.4(.252)																				
4 (16.7 to 26.66)	10	5	TU22A-5	5.3(.209)	16.0 (.630)	53.0(2.087)	15.0 (.591)	33.0(1.299)	7.0(.276)	16.0 (.630)	11.4 (.449)	7.7 (.303)	3.6 (.142)	0	0	0	0	0	0	0	0	0	0	100
	1/4	6	TU22A-6	6.4(.252)																				
	5/16	8	TU22A-8	9.0(.354)																				
2 (26.66 to 42.42)	1/4	6	TU38A-6	6.4(.252)	19.0 (.748)	62.0(2.441)	18.0 (.709)	37.5(1.476)	8.5(.335)	16.0 (.630)	13.3 (.524)	9.4 (.370)	3.8 (.150)	0	0	0	0	0	0	0	0	0	0	50
	5/16	8	TU38A-8	9.0(.354)																				
1/0 (42.42 to 60.57)	3/8	10	TU60A-10	11.0(.433)	22.0 (.866)	86.0(3.386)	20.0 (.787)	56.0(2.205)	13.0(.512)	28.0(1.102)	15.4 (.606)	11.4 (.449)	4.0 (.157)	0	0	0	0	0	0	0	0	0	0	50
	3/8	10	TU60B-10	11.0(.433)																				
2/0 (60.57 to 76.28)	3/8	10	TU70A-10	11.0(.433)	25.0 (.984)	90.0(3.543)	22.0 (.866)	57.0(2.244)	13.5(.532)	28.0(1.102)	17.5 (.689)	13.3 (.524)	4.3 (.169)	0	0	0	0	0	0	0	0	0	0	50
	3/8	10	TU70B-10	11.0(.433)																				
3/0 (76.28 to 96.3)	3/8	10	TU80A-10	11.0(.433)	27.5 (1.083)	95.0(3.740)	24.5 (.965)	58.0(2.284)	13.5(.532)	28.0(1.102)	19.4 (.764)	14.5 (.571)	5.1 (.201)	0	0	0	0	0	0	0	0	0	0	25
	3/8	10	TU80B-10	11.0(.433)																				
4/0 (96.3 to 117.2)	3/8	10	TU100A-10	11.0(.433)	31.5 (1.240)	99.0(3.898)	25.5 (1.004)	59.0(2.323)	14.5(.571)	28.0(1.102)	22.0 (.866)	16.4 (.646)	5.7 (.224)	0	0	0	0	0	0	0	0	0	0	25
	3/8	10	TU100B-10	11.0(.433)																				
250/300MCM (117.2 to 152.05)	7/16	12	TU150A-12	14.0(.551)	38.0 (1.496)	128.0(5.039)	34.5 (1.358)	76.0(2.992)	16.5(.650)	40.0(1.575)	26.5 (1.043)	19.5 (.768)	7.0 (.276)	0	0	0	0	0	0	0	0	0	0	10
	7/16	12	TU150B-12	14.0(.551)																				
350MCM (152.05 to 192.6)	7/16	12	TU180A-12	14.0(.551)	41.0 (1.614)	132.0(5.197)	36.5 (1.437)	78.0(3.071)	16.5(.650)	40.0(1.575)	28.5 (1.122)	21.0 (.827)	7.7 (.303)	0	0	0	0	0	0	0	0	0	0	10
	7/16	12	TU180B-12	14.0(.551)																				
400MCM (192.6 to 242.27)	7/16	12	TU200A-12	14.0(.551)	46.0 (1.811)	141.0(5.551)	37.0 (1.457)	86.0(3.386)	21.0(.827)	40.0(1.575)	32.5 (1.280)	24.0 (.945)	8.5 (.335)	0	0	0	0	0	0	0	0	0	0	5
	7/16	12	TU200B-12	14.0(.551)																				
600/650MCM (242.27 to 325.0)	7/16	12	TU325A-12	14.0(.551)	53.0 (2.087)	152.5(6.004)	42.0 (1.654)	91.5(3.602)	23.5(.925)	40.0(1.575)	37.0 (1.457)	28.0 (1.102)	9.0 (.354)	0	0	0	0	0	0	0	0	0	0	5
	7/16	12	TU325B-12	14.0(.551)																				

Note:1) Delivery lead times may vary depending on the product. Contact JST for details.