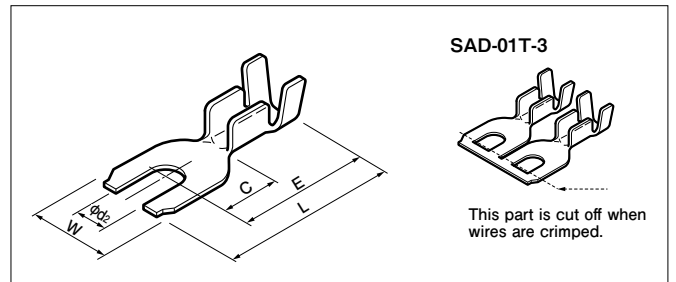


FORK TONGUE TERMINAL

With insulation grip



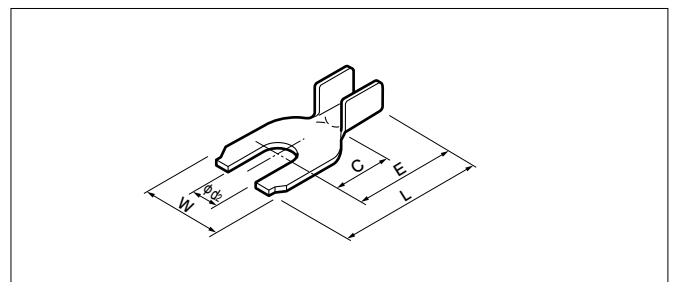
UL LISTED E42024 Certified LR20812

| Model No. | Standard | Applicable wire | | | Material | Surface finish | Dimensions (mm) | | | | | Q'ty/reel | | |
|-------------|------------------------|-----------------|----------|----------------------|----------|----------------|-----------------------|------|------|-----|-----|-----------|--------------------|-----|
| | | mm ² | AWG # | Insulation Q.D. (mm) | | | d ₂ (dia.) | E | L | C | W | | Material thickness | |
| SAA-51-3 | UL LISTED Certified | 0.5 to 2.0 | 20 to 14 | 2.6 to 3.8 | Brass | — | 3.2 | 13.0 | 16.8 | 5.8 | 7.2 | 0.5 | 7,500 | |
| SAA-51T-3 | | | | | | Tin-plated | | | | | | | | |
| SAA-51-3.7 | | | | | | — | | | | | | | | |
| SAA-51T-3.7 | | | | | | Tin-plated | | | | | | | | |
| SAA-51T-4 | | | | | | Tin-plated | 4.3 | | | | | | | |
| SAB-51-5 | | | | | | — | | | | | | | | |
| SAB-51T-5 | | | | | | Tin-plated | 5.3 | | | | | | | 8.2 |
| *SAD-01T-3 | | | | | | Tin-plated | 3.2 | | | | | | | |

RoHS2 compliance SAD-01T-3 displays (SN) on a label.

Note: The terminal denoted by * is a twin lead fork terminal and is used for crimping 2 piece terminals simultaneously onto 2 parallel wires like the TV feeder wires.

Without insulation grip



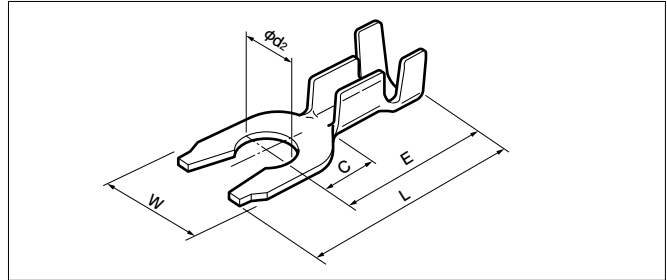
UL LISTED E42024 Certified LR20812

| Model No. | Standard | Applicable wire | | Material | Surface finish | Dimensions (mm) | | | | | Q'ty/reel | |
|-------------|------------------------|-----------------|----------|----------|----------------|-----------------------|------|------|-----|-----|-----------|--------------------|
| | | mm ² | AWG # | | | d ₂ (dia.) | E | L | C | W | | Material thickness |
| SAA-50-3 | UL LISTED Certified | 0.5 to 2.0 | 20 to 14 | Brass | — | 3.2 | 10.0 | 13.8 | 6.0 | 7.2 | 0.5 | 10,000 |
| SAA-50T-3.7 | | | | | Tin-plated | 3.7 | | | | | | |
| SAA-50-4 | | | | | — | 4.3 | | | | | | |
| SAA-50T-4 | | | | | Tin-plated | | | | | | | |

RoHS2 compliance

FORK TONGUE TERMINAL

Locking type (With insulation grip)



UL LISTED E42024

CS Certified LR20812

| Model No. | Standard | Applicable wire | | | Material | Surface finish | Dimensions (mm) | | | | | Q'ty/reel | |
|--------------|--------------|-----------------|----------|----------------------|----------|----------------|-----------------------|------|------|-----|-----|-----------|--------------------|
| | | mm ² | AWG # | Insulation Q.D. (mm) | | | d ₂ (dia.) | E | L | C | W | | Material thickness |
| SAA-21-3L | UL LISTED CS | 0.3 to 0.75 | 22 to 18 | 1.5 to 2.8 | Brass | — | 3.2 | 13.0 | 16.8 | 5.8 | 7.2 | 0.5 | 7,500 |
| SAA-21T-3L | | | | | | Tin-plated | | | | | | | |
| SAA-21-3.5L | | | | | | — | 3.7 | | | | | | |
| SAA-21T-3.5L | | | | | | Tin-plated | | | | | | | |
| SAA-21-4L | | | | | | — | 4.3 | | | | | | |
| SAA-21T-4L | | | | | | Tin-plated | | | | | | | |

RoHS2 compliance

Crimping machine, Applicator

| Contact | Crimping machine | Applicator | Crimp applicator with dies |
|--------------|------------------|------------|----------------------------|
| SAA-21(T)-** | AP-K2N | MK-L | APLMK SAA21 |
| SAA-50(T)-** | | | APLMK SAA50 |
| SAA-51(T)-** | | | APLMK SAA51 |
| SAB-51(T)-** | | | APLMK SAB51 |
| SAD-01(T)-** | | | APLMK SAD01 |

Note: Contact JST for fully automatic crimping applicator.

* In using the products, refer to "Handling Precautions for Terminals and Connectors" described on our website (Technical documents of Product information page).

- * RoHS2 compliance
- * Dimensional unit: mm
- * Contact JST for details.