



# PS CONNECTOR

## ■ Features

- Secure locking mechanism and Low insertion force
- Stable contacting performance
- Misinsertion (reverse insertion) prevention structure for the contact
- Misinsertion prevention structure for the tab (Short type housing)
- Glow wire compatible products are also available for short type housings

\* Contact JST for the glow wire compatible products.

## ■ Standards

Ⓜ: Recognized E 60389

Ⓢ: Certified LR 20812

Ⓡ: R9850196

## ■ Specifications

- Current rating: 25 A AC/DC (#250 Tab /AWG #10)
- Voltage rating: 250 V AC/DC
- Temperature range: -40°C to +105°C (including temperature rise in applying electrical current)
- Contact resistance: Initial value/ 3 mΩ max.  
After environmental tests/ 6 mΩ max.
- Insulation resistance: 1,000 MΩ min.
- Withstanding voltage: 2,000 VAC/minute
- Applicable wire: #110 Series...AWG #24 to #16  
#187 Series...AWG #26 to #14  
#205 Series...AWG #22 to #14  
#250/#250S Series...AWG #22 to #10
- Applicable Tab: #110 Series...0.5 mm thick  
#187 Series...0.5 mm/ 0.8 mm thick  
#205 Series...0.5 mm/ 0.8 mm thick  
#250/#250S Series...0.8 mm thick

\* In using the products, refer to "Handling Precautions for Terminals and Connectors" described on our website (Technical documents of Product information page).

\* RoHS2 compliance

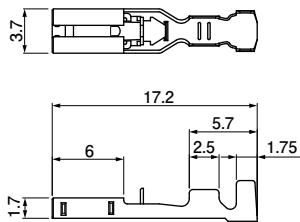
\* Dimensional unit: mm

\* Contact JST for details.

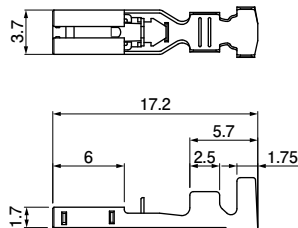
## Contact

### #110 Series

#### SPS-01T-110



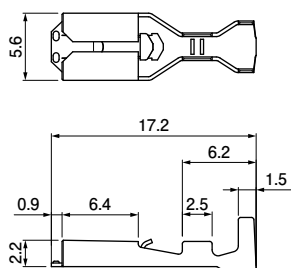
#### SPS-41T-110



### #187 Series

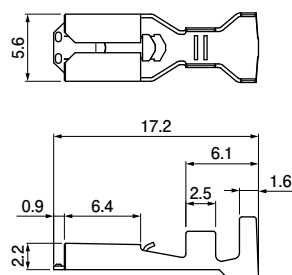
#### SPS-01T-187

(for 0.5 mm thick tabs)



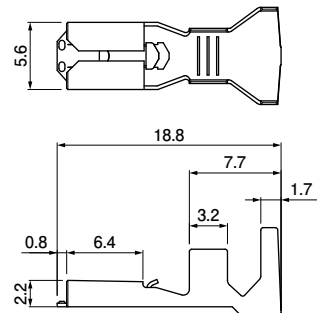
#### SPS-51T-187

(for 0.5 mm thick tabs)



#### SPS-82T-187

(for 0.5 mm thick tabs)



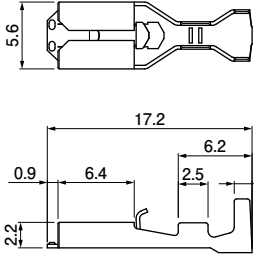
Note: The 187 series has two types of contacts that are applicable to each 0.5 mm and 0.8 mm thick tab.

# PS CONNECTOR

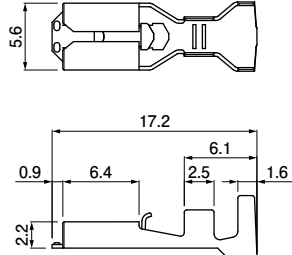
## Contact

### #187 Series

**SPS-01T-187-8**  
(for 0.8 mm thick tabs)

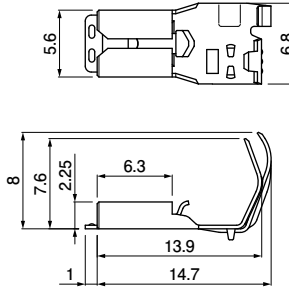


**SPS-51T-187-8**  
(for 0.8 mm thick tabs)

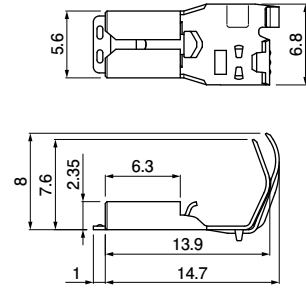


• Flag type

**SFPS-41T-187**  
(for 0.5 mm thick tabs)



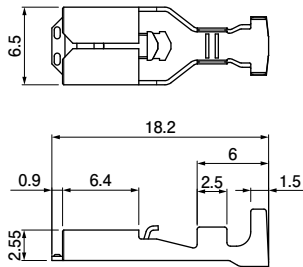
**SFPS-41T-187-8**  
(for 0.8 mm thick tabs)



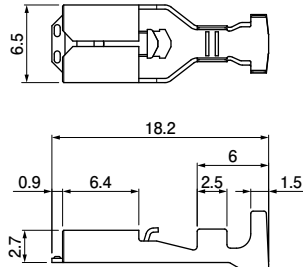
Note: The 187 series has two types of contacts that are applicable to each 0.5 mm and 0.8 mm thick tab.

### #205 Series

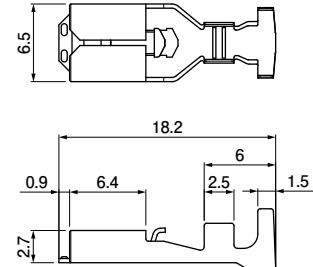
**SPS-21T-205-5**  
(for 0.5 mm thick tabs)



**SPS-21T-205**  
(for 0.8 mm thick tabs)



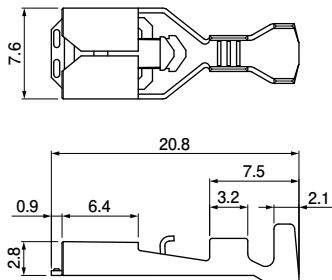
**SPS-51T-205**  
(for 0.8 mm thick tabs)



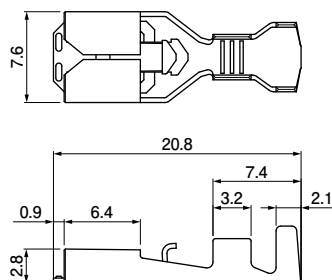
Note: The 205 series has two types of contacts that are applicable to each 0.5 mm and 0.8 mm thick tab.

### #250 Series

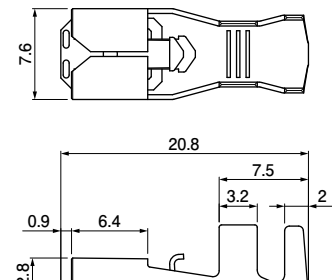
**SPS-21T-250**



**SPS-61T-250**

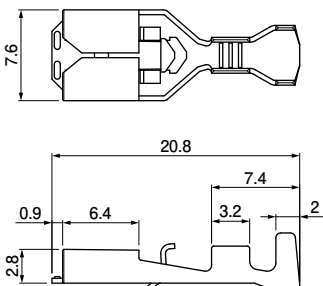


**SPS-91T-250**

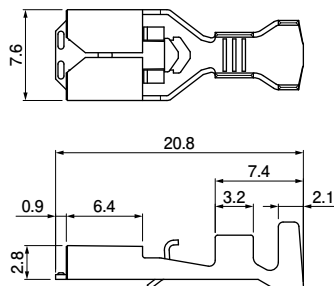


• For short type housing

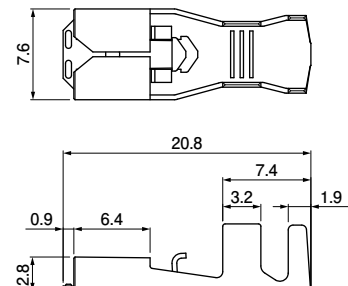
**SPS-21T-250R**



**SPS-61T-250R**



**SPS-91T-250R**

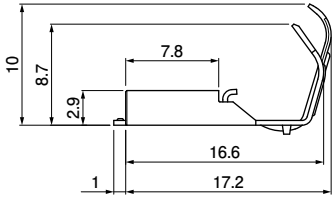
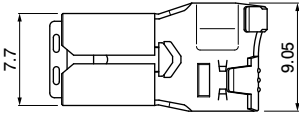


## Contact

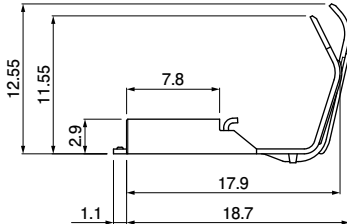
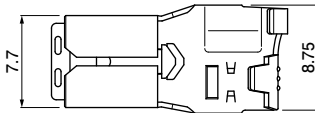
### #250 Series

- Flag type

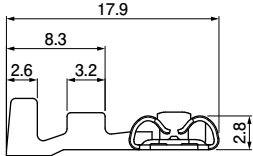
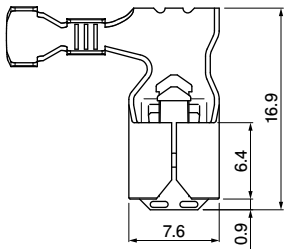
SFPS-61T-250



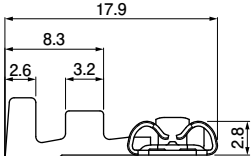
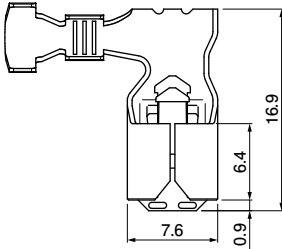
SFPS-91T-250



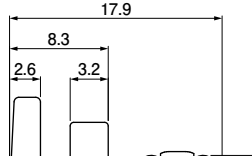
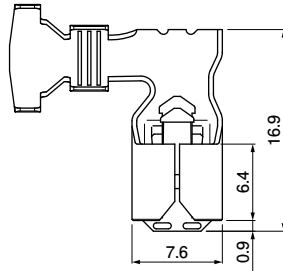
SFPS-21T-250H



SFPS-61T-250H

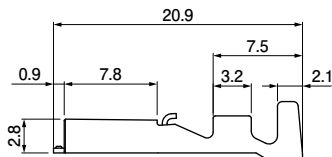
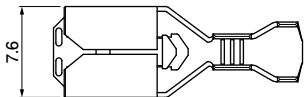


SFPS-91T-250H

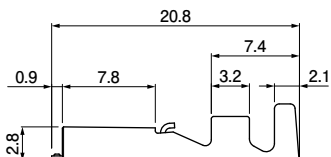
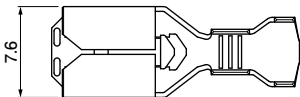


### #250S Series

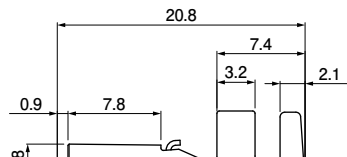
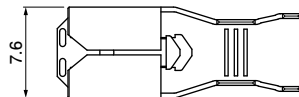
SPS-21T-250S



SPS-61T-250S



SPS-91T-250S



# PS CONNECTOR

## Contact

| Series |                        | Model No.             | Applicable wire        |                | Insulation O.D. (mm) | Q'ty/reel      |                      |
|--------|------------------------|-----------------------|------------------------|----------------|----------------------|----------------|----------------------|
|        |                        |                       | mm <sup>2</sup>        | AWG #          |                      |                |                      |
| #110   |                        | SPS-01T-110           | 0.21 to 0.5            | 24 to 20       | 1.0 to 2.5           | 10,000         |                      |
|        |                        | SPS-41T-110           | 0.5 to 1.31            | 20 to 16       | 1.9 to 3.4           | 10,000         |                      |
| #187   | for 0.5 mm thick tabs  | SPS-01T-187           | 0.13 to 0.5            | 26 to 20       | 1.3 to 3.4           | 10,000         |                      |
|        |                        | SPS-51T-187           | 0.5 to 2.0             | 20 to 14       | 1.9 to 3.6           | 7,500          |                      |
|        |                        | * SPS-82T-187         | 0.75+0.75 to 1.25+1.25 | 18+18 to 16+16 | 2.1+2.1 to 2.9+2.9   | 3,500          |                      |
|        | for 0.8 mm thick tabs  | SPS-01T-187-8         | 0.13 to 0.5            | 26 to 20       | 1.3 to 3.4           | 10,000         |                      |
|        |                        | SPS-51T-187-8         | 0.5 to 2.0             | 20 to 14       | 1.9 to 3.6           | 7,500          |                      |
|        | Flag type              | for 0.5 mm thick tabs | SFPS-41T-187           | 0.3 to 1.25    | 22 to 16             | 1.7 to 3.4     | 5,000                |
|        | for 0.8 mm thick tabs  | SFPS-41T-187-8        | 0.3 to 1.31            | 22 to 16       | 1.7 to 3.4           | 5,000          |                      |
| #205   | for 0.5 mm thick tabs  | SPS-21T-205-5         | 0.3 to 0.75            | 22 to 18       | 1.5 to 3.1           | 5,000          |                      |
|        | for 0.8 mm thick tabs  | SPS-21T-205           | 0.3 to 0.75            | 22 to 18       | 1.5 to 3.1           | 5,000          |                      |
|        |                        | SPS-51T-205           | 0.5 to 2.0             | 20 to 14       | 1.9 to 3.6           | 5,000          |                      |
| #250   | for short type housing | SPS-21T-250           | 0.3 to 0.75            | 22 to 18       | 1.5 to 3.1           | 5,000          |                      |
|        |                        | SPS-61T-250           | 0.75 to 2.0            | 18 to 14       | 2.1 to 3.9           | 5,000          |                      |
|        |                        | SPS-91T-250           | 2.0 to 5.5             | 14 to 10       | 3.0 to 4.7           | 4,000          |                      |
|        |                        | SPS-21T-250R          | 0.3 to 0.75            | 22 to 18       | 1.5 to 3.1           | 3,500          |                      |
|        |                        | SPS-61T-250R          | 0.75 to 2.0            | 18 to 14       | 2.1 to 3.9           | 3,500          |                      |
|        |                        | SPS-91T-250R          | 2.0 to 5.5             | 14 to 10       | 3.0 to 4.7           | 3,500          |                      |
|        | Flag type              | H type                | SFPS-61T-250           | 0.75 to 2.0    | 18 to 14             | 2.1 to 3.9     | 3,000                |
|        |                        |                       | SFPS-91T-250           | 3.5 to 5.5     | 12 to 10             | 4.0 to 5.2     | 2,000                |
|        |                        |                       | SFPS-21T-250H          | 0.3 to 0.75    | 22 to 18             | 1.5 to 3.1     | 2,400                |
|        |                        | SFPS-61T-250H         | 0.75 to 2.0            | 18 to 14       | 2.1 to 3.9           | 2,000          |                      |
|        |                        | SFPS-91T-250H         | 2.0 to 5.5             | 14 to 10       | 3.5 to 7.2           | 1,300          |                      |
|        |                        |                       |                        |                | 1.25+1.25 to 2.0+2.0 | 16+16 to 14+14 | 1.75+1.75 to 3.6+3.6 |
| #250S  |                        | SPS-21T-250S          | 0.3 to 0.75            | 22 to 18       | 1.5 to 3.1           | 5,000          |                      |
|        |                        | SPS-61T-250S          | 0.75 to 2.0            | 18 to 14       | 2.1 to 3.9           | 5,000          |                      |
|        |                        | SPS-91T-250S          | 2.0 to 5.5             | 14 to 10       | 3.0 to 4.7           | 4,000          |                      |

### Material and Finish

Brass, tin-plated

RoHS2 compliance

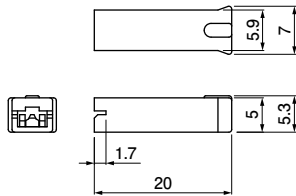
Note: \*Marked product is unlisted in CSA/TÜV.

| Contact           | Crimping machine | Applicator       |                 |                            |
|-------------------|------------------|------------------|-----------------|----------------------------|
|                   |                  | Crimp applicator | Dies            | Crimp applicator with dies |
| SPS-01T-110       | AP-K2N           | MK-L-SPS         | MK/SPS-01-110   | APLMK SPS01-110            |
| SPS-41T-110       |                  |                  | MK/SPS-41-110   | APLMK SPS41-110            |
| SPS-01T-187 (-8)  |                  |                  | MK/SPS-01-187   | APLMK SPS01-187            |
| SPS-51T-187 (-8)  |                  |                  | MK/SPS-51-187   | APLMK SPS51-187            |
| SPS-82T-187       |                  |                  | MK/SPS-82-187   | APLMK SPS82-187            |
| SFPS-41T-187 (-8) |                  |                  | MK/SFPS-41-187  | APL SFPS41-187             |
| SPS-21T-205 (-5)  |                  | MK-L-PS187       | MK/SPS-21-205   | APLMK SPS21-205            |
| SPS-51T-205       |                  |                  | MK/SPS-51-205   | APLMK SPS51-205            |
| SPS-21T-250 (S)   |                  |                  | MK/SPS-21-250   | APLMK SPS21-250            |
| SPS-21T-250R      |                  |                  | MK/SPS-21-250R  | APLMK SPS21-250R           |
| SPS-61T-250 (S)   |                  |                  | MK/SPS-61-250   | APLMK SPS61-250            |
| SPS-61T-250R      |                  |                  | MK/SPS-61-250R  | APLMK SPS61-250R           |
| SPS-91T-250 (S)   |                  | MK-L-PS250       | MK/SPS-91-250   | APLMK SPS91-250            |
| SPS-91T-250R      |                  |                  | MK/SPS-91-250R  | APLMK SPS91-250R           |
| SFPS-61T-250      |                  |                  | MK/SFPS-61-250  | APL SFPS61-250             |
| SFPS-91T-250      |                  |                  | MK/SFPS-91-250  | APL SFPS91-250             |
| SFPS-21T-250H     |                  |                  | MK/SFPS-21-250H | APLMK SFPS21-250H          |
| SFPS-61T-250H     |                  |                  | MK/SFPS-61-250H | APLMK SFPS61-250H          |
| SFPS-91T-250H     |                  | MKS-L-RASRSF     | MK/SFPS-91-250H | APLMK SFPS91-250H          |
|                   |                  |                  |                 |                            |

Note: Contact JST for fully automatic crimping applicator.

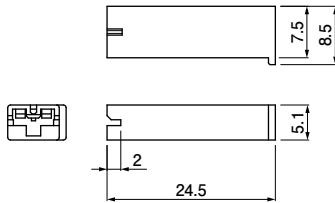
## Housing

### #110 Series PS-110

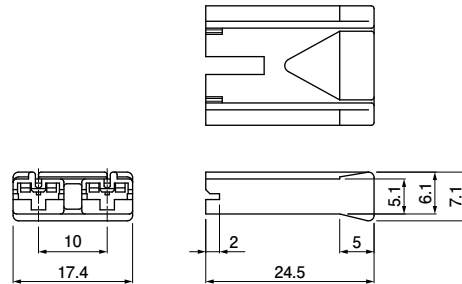


### #187 Series • for 0.5 mm thick tabs

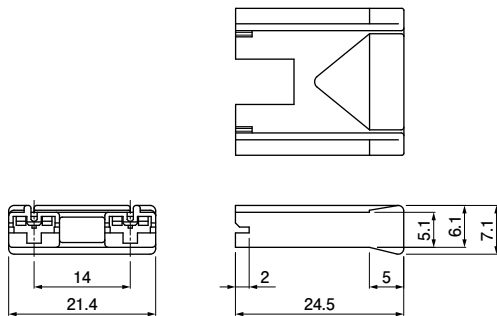
#### PS-187



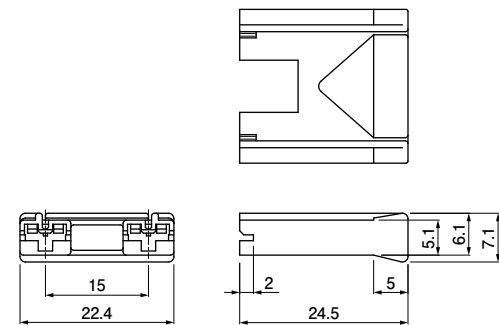
#### PS-187-2A-10



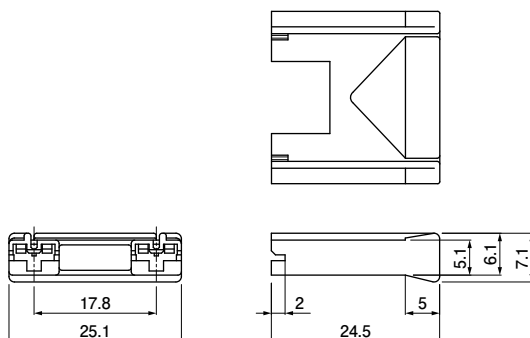
#### PS-187-2A-14



#### PS-187-2A-15



#### PS-187-2A-17.8



Note: The 187 series has two types of housings that are applicable to each 0.5 mm and 0.8 mm thick tab.

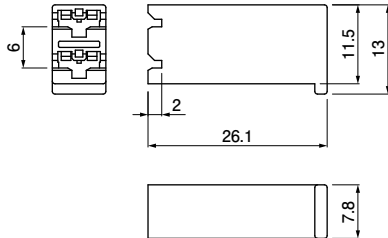
# PS CONNECTOR

## Housing

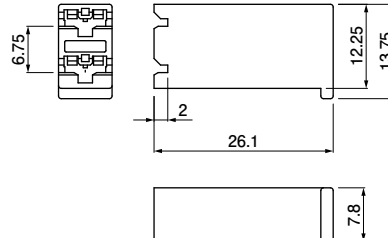
### #187 Series

- for 0.5 mm thick tabs

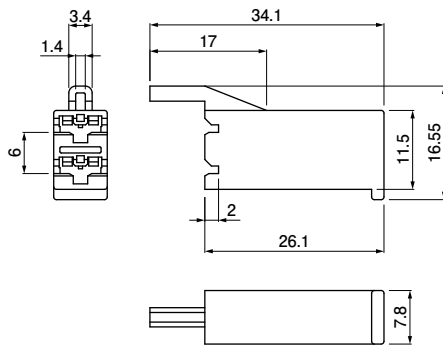
PS-187-2B



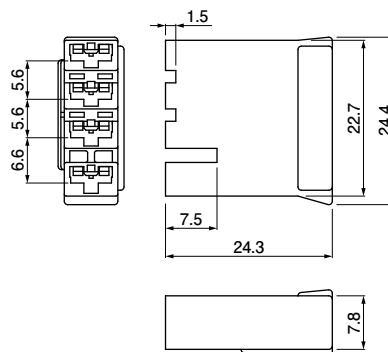
PS-187-2B-6.75



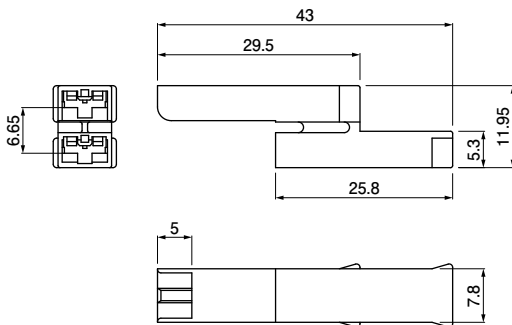
PS-187-2B1



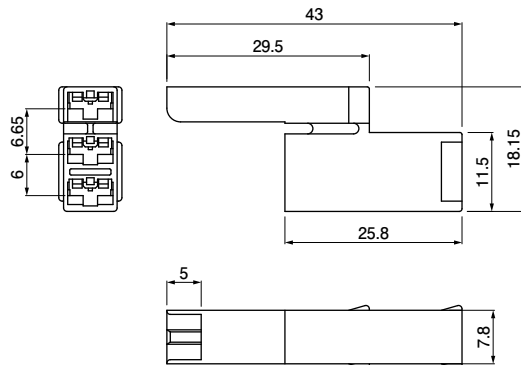
PS-187-4B



PS-187-2V

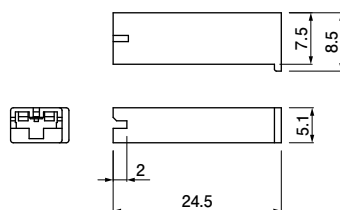


PS-187-3V

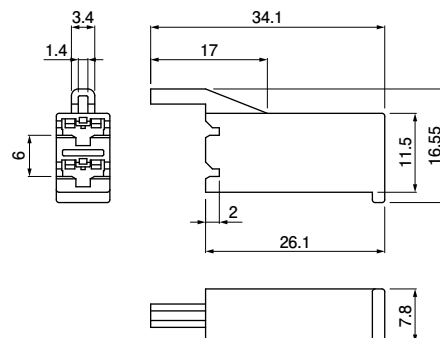


- for 0.8 mm thick tabs

PS-187-8-H



PS-187-2B1-8-H

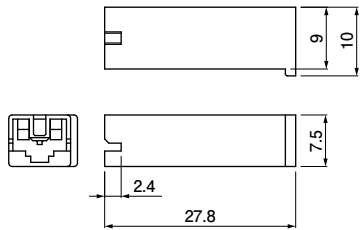


Note: The 187 series has two types of housings that are applicable to each 0.5 mm and 0.8 mm thick tab.

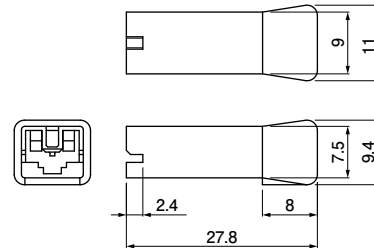
## Housing

### #250 Series

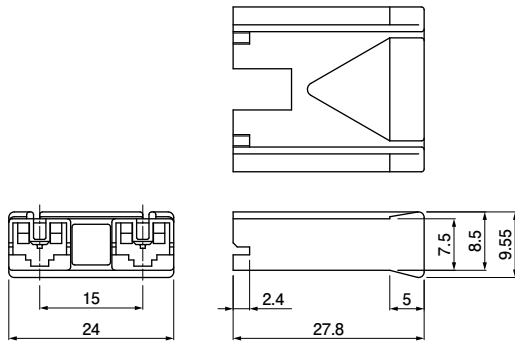
#### PS-250



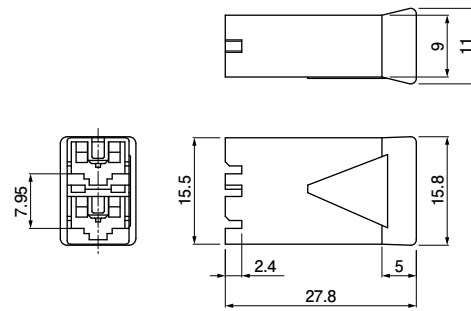
#### PS-250-A



#### PS-250-2A-15

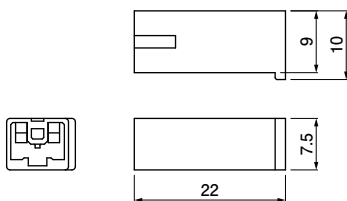


#### PS-250-2B

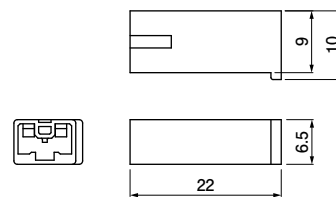


#### • Short type

- PS-250-G
- PS-250-G-WGJ2  
(Glow wire compatible products)

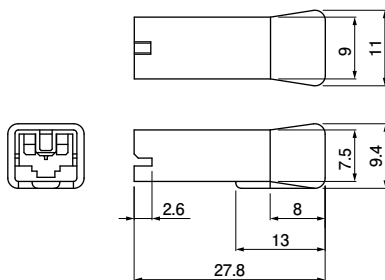


#### PS-250-GL (Thin type)



### #250S Series

#### NPS-250-A

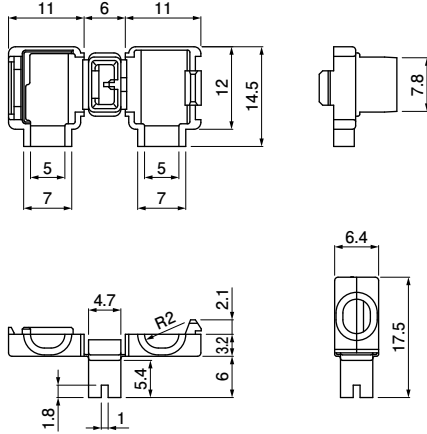


# PS CONNECTOR

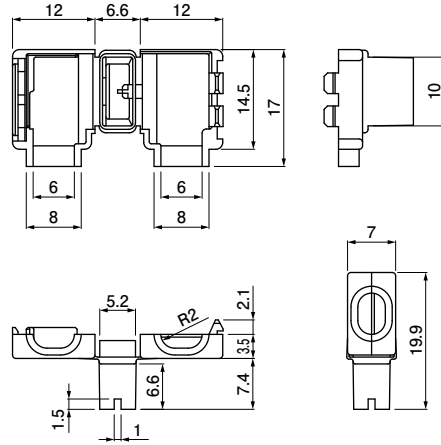
## Housing

### One-touch sleeve

FPS-187



FPS-250



| Series                | Model No.              | Q'ty/bag  | Applicable contact                           |       |               |
|-----------------------|------------------------|---|--|-------|---------------|
| #110                  | PS-110                 | 1,000   | SPS-01T-110<br>SPS-41T-110                   |       |               |
| #187                  | PS-187                 | 1,000   | SPS-01T-187<br>SPS-51T-187<br>SPS-82T-187    |       |               |
|                       | PS-187-2A-10           | 500   |  |       |               |
|                       | PS-187-2A-14           | 500   |  |       |               |
|                       | PS-187-2A-15           | 500   |  |       |               |
|                       | PS-187-2A-17.8         | 500   |  |       |               |
|                       | PS-187-2B              | 500   |  |       |               |
|                       | PS-187-2B-6.75         | 500   |  |       |               |
|                       | PS-187-2B1             | 500   |  |       |               |
|                       | PS-187-4B              | 500   |  |       |               |
|                       | PS-187-2V              | 500   |  |       |               |
|                       | PS-187-3V              | 500   |  |       |               |
|                       |                        | PS-187-8-H (Note1)                                |  | 1,000 | SPS-01T-187-8 |
|                       | PS-187-2B1-8-H (Note1) | 500   | SPS-51T-187-8                                |       |               |
| #250                  | PS-250                 | 1,000   | SPS-21T-250<br>SPS-61T-250<br>SPS-91T-250    |       |               |
|                       | PS-250-A               | 500   |  |       |               |
|                       | PS-250-2A-15           | 500   |  |       |               |
|                       | PS-250-2B              | 500   |  |       |               |
|                       | Short type             | PS-250-G  |  | 1,400 | SPS-21T-250R  |
|                       |                        | PS-250-G-WGJ2 (Compatible with glow wire) (Note2) |  | 1,400 | SPS-61T-250R  |
| PS-250-GL (Thin type) |                        | 1,400   | SPS-91T-250R                                 |       |               |
| #250S                 | NPS-250-A              | 1,000   | SPS-21T-250S<br>SPS-61T-250S<br>SPS-91T-250S |       |               |
| One-touch sleeve      | * FPS-187              | 500   | SFPS-41T-187                                 |       |               |
|                       | * FPS-250              | 500   | SFPS-61T-250                                 |       |               |

#### Material and Finish

PA 66, UL94V-0, natural (white)  
 (Note1) PA 66, UL94V-0, gray  
 (Note2) PA 6, UL94V-2, natural (white)

RoHS2 compliance

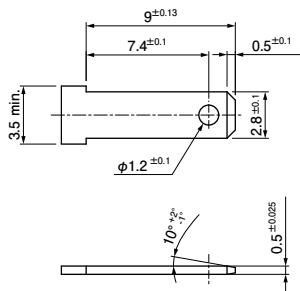
Note: \*Marked products are unlisted in UL/CSA/TÜV.



## Tab

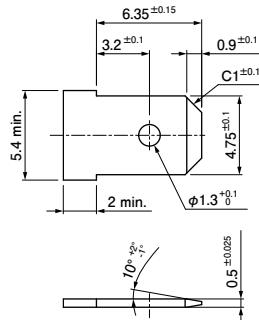
### #110

0.5 mm thick tabs

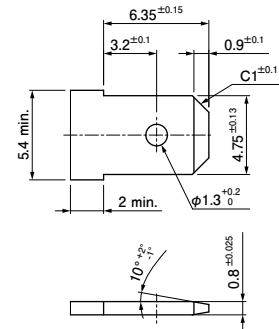


### #187

0.5 mm thick tabs

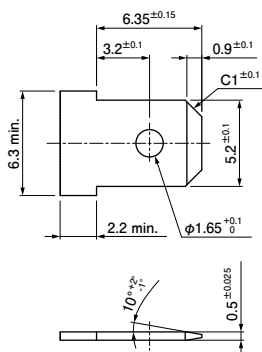


0.8 mm thick tabs

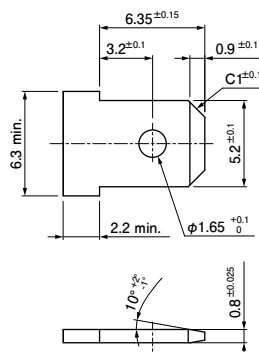


### #205

0.5 mm thick tabs

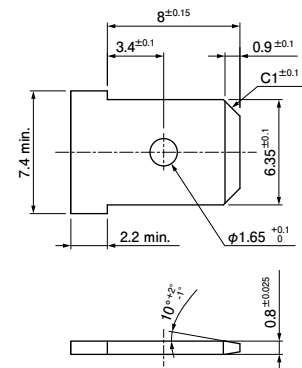


0.8 mm thick tabs



### #250

0.8 mm thick tabs



- Note: 1. Use the brass materials for the tabs.  
 2. No ribs or slits shall be provided on the tab surface.  
 3. Contact JST when using the PS connector for Micro-switch.  
 4. Contact JST when using PS-187-4B.