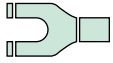
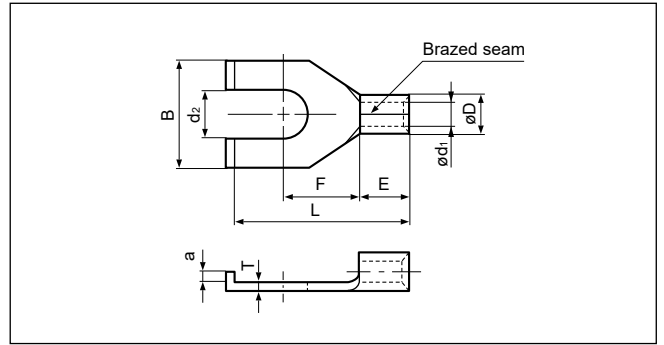
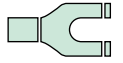


Solderless terminals



**FLANGED SPADE TONGUE (B type) Non-insulated**

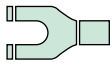


Certificate No.: E42024 LR20812

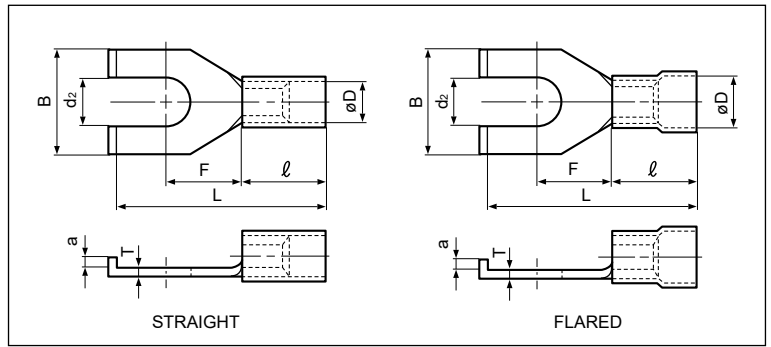
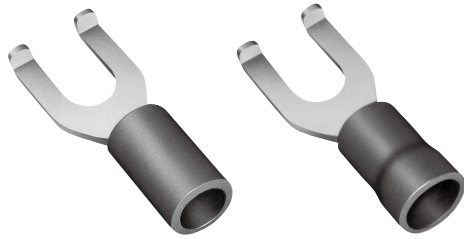
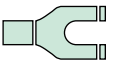
| Applicable Wire<br>AWG#(mm <sup>2</sup> ) | Stud size |        | Part No.  | Standard | Dimensions mm (in.) |             |             |             |               |               |               |               | Tool No.      | Qty/box                                       |       |  |
|---|-----------|--------|-----------|----------|---------------------|-------------|-------------|-------------|---------------|---------------|---------------|---------------|---------------|---|-------|--|
|   | American  | Metric |           |          | dz                  | B           | L           | F           | E             | øD            | ød1           | a             |               |   | T     |  |
| 22 to 16<br>(0.25 to 1.65)                | 5-6       | 3.5    | 1.25-YS3B |          | 3.7 (.146)          | 6.4 (.252)  | 14.2 (.559) | 6.3 (.248)  | 4.8<br>(.189) | 3.4<br>(.134) | 1.7<br>(.067) | 0.8<br>(.031) | 0.8<br>(.031) | YHT-2210<br>YA-1<br>YA-2<br>YA-4<br>BCT-0514L | 1,000 |  |
|   | 5-6       | 3.5    | 1.25-S3B  |          | 3.7 (.146)          | 7.5 (.295)  | 13.1 (.516) | 5.1 (.201)  |               |               |               | 1.5<br>(.059) |               |   |       |  |
|   | 8         | 4      | 1.25-YS4B |          | 4.3 (.169)          | 6.4 (.252)  | 14.2 (.559) | 6.3 (.248)  |               |               |               | 0.8<br>(.031) |               |   |       |  |
|   | 8         | 4      | 1.25-S4B  |          | 4.3 (.169)          | 7.5 (.295)  | 13.1 (.516) | 5.1 (.201)  |               |               |               | 1.5<br>(.059) |               |   |       |  |
|   | 8         | 4      | 1.25-4B   |          | 4.3 (.169)          | 8.5 (.335)  | 18.5 (.728) | 7.2 (.284)  |               |               |               |               |               |   |       |  |
|   | 10        | 5      | 1.25-5B   |          | 5.3 (.209)          | 8.5 (.335)  | 18.5 (.728) | 7.2 (.284)  |               |               |               |               |               |   |       |  |
| 16 to 14<br>(1.04 to 2.63)                | 5-6       | 3.5    | 2-T3B     |          | 3.7 (.146)          | 7.5 (.295)  | 13.5 (.532) | 5.2 (.205)  | 4.8<br>(.189) | 4.1<br>(.161) | 2.3<br>(.091) | 1.5<br>(.059) | 0.8<br>(.031) | YHT-2210<br>YA-1<br>YA-2<br>YA-4<br>BCT-0514L | 1,000 |  |
|   | 5-6       | 3.5    | 2-3B      |          | 3.7 (.146)          | 8.5 (.335)  | 17.0 (.670) | 7.2 (.283)  |               |               |               | 1.5<br>(.059) |               |   |       |  |
|   | 8         | 4      | 2-T4B     |          | 4.3 (.169)          | 7.5 (.295)  | 13.5 (.532) | 5.2 (.205)  |               |               |               |               |               |   |       |  |
|   | 8         | 4      | 2-4B      |          | 4.3 (.169)          | 8.5 (.335)  | 17.0 (.670) | 7.3 (.287)  |               |               |               | 1.5<br>(.059) |               |   |       |  |
|   | 10        | 5      | 2-5B      |          | 5.3 (.209)          | 8.5 (.335)  | 17.0 (.670) | 7.3 (.287)  |               |               |               |               |               |   |       |  |
|   | 1/4       | 6      | 2-6B      |          | 6.4 (.252)          | 13.5 (.532) | 24.0 (.945) | 11.7 (.461) |               |               |               |               |               |   |       |  |
| 12 to 10<br>(2.63 to 6.64)                | 5-6       | 3.5    | 5.5-S3B   |          | 3.7 (.146)          | 7.6 (.299)  | 18.0 (.709) | 6.2 (.244)  | 6.8<br>(.268) | 5.6<br>(.221) | 3.4<br>(.134) | 1.5<br>(.059) | 1.0<br>(.039) | YHT-2210<br>YA-1<br>YA-2<br>YA-4<br>BCT-0514L | 500   |  |
|   | 5-6       | 3.5    | 5.5-3B    |          | 3.7 (.146)          | 8.5 (.335)  | 19.5 (.768) | 7.5 (.295)  |               |               |               |               |               |   |       |  |
|   | 8         | 4      | 5.5-S4B   |          | 4.3 (.169)          | 7.6 (.299)  | 18.0 (.709) | 6.2 (.244)  |               |               |               |               |               |   |       |  |
|   | 8         | 4      | 5.5-4B    |          | 4.3 (.169)          | 8.5 (.335)  | 19.5 (.768) | 7.5 (.295)  |               |               |               |               |               |   |       |  |
|   | 10        | 5      | 5.5-5B    |          | 5.3 (.209)          | 8.5 (.335)  | 19.5 (.768) | 7.5 (.295)  |               |               |               |               |               |   |       |  |
|   | 1/4       | 6      | 5.5-6B    |          | 6.4 (.252)          | 13.5 (.532) | 26.5(1.043) | 12.2 (.480) |               |               |               |               |               |   |       |  |

Note:1) The part numbers indicated in the above table are for products with a brazed seam.  
 When ordering products with a butted seam, add the prefix "WS" to the part number (ex. 2-4B --> **WS2-4B**).  
 2) Delivery lead times may vary depending on the product. Contact JST for details.

Solderless terminals



# FLANGED SPADE TONGUE (B type) Vinyl-insulated



Certificate No.: E42024 LR20812

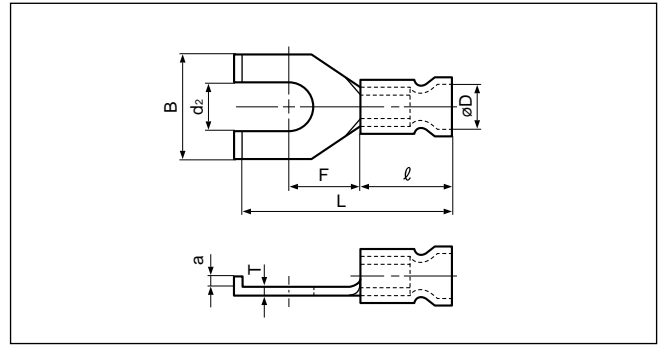
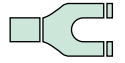
| Applicable Wire<br>AWG#(mm <sup>2</sup> ) | Stud size |          | Part No.   |            | Standard    | Dimensions mm (in.) |             |             |             |            |             |            |            |            |        | Color   | Tool No. | Qty/box |
|---|-----------|----------|------------|------------|-------------|---------------------|-------------|-------------|-------------|------------|-------------|------------|------------|------------|--------|---|----------|---------|
|   | American  | Metric   | Straight   | Flared     |             | d <sub>2</sub>      | B           | L           | F           | a          | ℓ           | ø D        |            | T          |        |   |          |         |
|   |           |          |            |            |             |                     |             |             |             |            |             | Str.       | Fid.       |            |        |   |          |         |
| 26 to 22<br>(0.2 to 0.5)                  | 1-2       | 2        | V0.5-2B    | FV0.5-2B   |             | 2.2 (.087)          | 4.6 (.181)  | 15.6 (.614) | 4.5 (.177)  | 1.0 (.039) | 8.0 (.315)  | 1.9 (.075) | 2.9 (.114) | 0.5 (.020) | Yellow | YNT-2622<br>YA-1,YA-2<br>BCT-0514L            | 1,000    |         |
| 22 to 16<br>*(0.25 to 1.65)               | 5-6       | 3.5      | V1.25-S3B  | FV1.25-S3B |             | 3.7 (.146)          | 7.5 (.295)  | 17.3 (.681) | 5.1 (.201)  | 1.5 (.059) | 9.0 (.354)  | 3.2 (.126) | 4.0 (.157) | 0.8 (.031) | Red    | YNT-2216<br>YA-1<br>YA-2<br>YA-4<br>BCT-0514L | 1,000    |         |
|   | 5-6       | 3.5      | V1.25-3B   | FV1.25-3B  |             | 3.7 (.146)          | 8.5 (.335)  | 21.7 (.854) | 7.2 (.284)  |            |             |            |            |            |        |   |          |         |
|   | 8         | 4        | V1.25-YS4B | -          |             | 4.3 (.169)          | 6.4 (.252)  | 18.4 (.724) | 6.3 (.248)  |            |             |            |            |            |        |   |          |         |
|   | 8         | 4        | V1.25-S4B  | FV1.25-S4B |             | 4.3 (.169)          | 7.5 (.295)  | 17.3 (.681) | 5.1 (.201)  |            |             |            |            |            |        |   |          |         |
|   | 8         | 4        | V1.25-4B   | FV1.25-4B  |             | 4.3 (.169)          | 8.5 (.335)  | 22.7 (.894) | 7.2 (.284)  |            |             |            |            |            |        |   |          |         |
|   | 10        | 5        | V1.25-5B   | FV1.25-5B  |             | 5.3 (.209)          | 8.5 (.335)  | 22.7 (.894) | 7.2 (.284)  |            |             |            |            |            |        |   |          |         |
| 1/4                                       | 6         | V1.25-6B | FV1.25-6B  | 6.4 (.252) | 13.5 (.532) | 28.2(1.110)         | 11.7 (.461) | 1.5 (.059)  | 500         |            |             |            |            |            |        |   |          |         |
| 16 to 14<br>(1.04 to 2.63)                | 5-6       | 3.5      | V2-YS3B    | -          |             | 3.7 (.146)          | 6.4 (.252)  | 18.6 (.732) | 6.3 (.248)  | 1.5 (.059) | 9.0 (.354)  | 3.9 (.154) | 4.5 (.177) | 0.8 (.031) | Blue   | YNT-1614<br>YA-1<br>YA-2<br>YA-4<br>BCT-0514L | 1,000    |         |
|   | 5-6       | 3.5      | V2-T3B     | FV2-T3B    |             | 3.7 (.146)          | 7.5 (.295)  | 17.7 (.697) | 5.2 (.205)  |            |             |            |            |            |        |   |          |         |
|   | 5-6       | 3.5      | V2-S3B     | -          |             | 3.7 (.146)          | 8.5 (.335)  | 19.0 (.748) | 7.2 (.284)  |            |             |            |            |            |        |   |          |         |
|   | 8         | 4        | V2-T4B     | FV2-T4B    |             | 4.3 (.169)          | 7.5 (.295)  | 17.7 (.696) | 5.2 (.205)  |            |             |            |            |            |        |   |          |         |
|   | 8         | 4        | V2-S4B     | -          |             | 4.3 (.169)          | 8.5 (.335)  | 19.0 (.748) | 7.2 (.284)  |            |             |            |            |            |        |   |          |         |
|   | 8         | 4        | V2-E4B     | FV2-E4B    |             | 4.3 (.169)          | 8.5 (.335)  | 19.4 (.764) | 7.3 (.287)  |            |             |            |            |            |        |   |          |         |
|   | 8         | 4        | V2-4B      | FV2-4B     |             | 4.3 (.169)          | 8.5 (.335)  | 21.2 (.835) | 7.3 (.287)  |            |             |            |            |            |        |   |          |         |
|   | 10        | 5        | V2-5B      | FV2-5B     |             | 5.3 (.209)          | 8.5 (.335)  | 21.2 (.835) | 7.3 (.287)  |            |             |            |            |            |        |   |          |         |
| 1/4                                       | 6         | V2-6B    | FV2-6B     | 6.4 (.252) | 13.5 (.532) | 28.2(1.110)         | 11.7 (.461) | 1.5 (.059)  | 500         |            |             |            |            |            |        |   |          |         |
| 12 to 10<br>(2.63 to 6.64)                | 5-6       | 3.5      | V5.5-S3B   | FV5.5-S3B  |             | 3.7 (.146)          | 7.6 (.299)  | 24.7 (.972) | 6.2 (.244)  | 1.5 (.059) | 13.5 (.531) | 5.4 (.213) | 6.8 (.268) | 1.0 (.039) | Yellow | YNT-1210S<br>YA-4<br>BCT-0514L                | 500      |         |
|   | 5-6       | 3.5      | V5.5-3B    | -          |             | 3.7 (.146)          | 8.5 (.335)  | 26.2(1.032) | 7.5 (.295)  |            |             |            |            |            |        |   |          |         |
|   | 8         | 4        | V5.5-S4B   | FV5.5-S4B  |             | 4.3 (.169)          | 7.6 (.299)  | 24.7 (.972) | 6.2 (.244)  |            |             |            |            |            |        |   |          |         |
|   | 8         | 4        | V5.5-4B    | FV5.5-4B   |             | 4.3 (.169)          | 8.5 (.335)  | 26.2(1.032) | 7.5 (.295)  |            |             |            |            |            |        |   |          |         |
|   | 10        | 5        | V5.5-S5B   | FV5.5-S5B  |             | 5.3 (.209)          | 7.6 (.299)  | 24.7 (.972) | 6.2 (.244)  |            |             |            |            |            |        |   |          |         |
|   | 10        | 5        | V5.5-5B    | FV5.5-5B   |             | 5.3 (.209)          | 8.5 (.335)  | 26.2(1.032) | 7.5 (.295)  |            |             |            |            |            |        |   |          |         |
|   | 10        | 5        | V5.5-E5B   | FV5.5-E5B  |             | 5.3 (.209)          | 9.5 (.374)  | 24.2 (.953) | 7.5 (.295)  |            |             |            |            |            |        |   |          |         |
|   | 1/4       | 6        | -          | FV5.5-6B   |             | 6.4 (.252)          | 13.5 (.532) | 33.2(1.307) | 12.2 (.480) | 1.5 (.059) |             |            |            |            |        |   |          | 250     |

- Note: 1) \*The crimping will be more secure if the total cross-sectional area of the wire is at least 0.5 mm<sup>2</sup>.  
 Examples : If the cross-sectional area of the wire is 0.3 mm<sup>2</sup>, fold the wire in two when crimping the terminal.  
 If the cross-sectional area of the wire is 0.5 mm<sup>2</sup>, crimp the terminal onto the wire as it is.
- 2) The part numbers indicated in the above table are for products with a brazed seam.  
 When ordering products with a butted seam, add the prefix "WS" to the part number (ex. V2-4B → **VWS2-4B**).
- 3) To order products with nylon insulation, change the "V" in the part number prefix to "N" (ex. V2-T4B → **N2-T4B**).  
 Because nylon absorbs moisture, care must be taken concerning storage.
- 4) Delivery lead times may vary depending on the product. Contact JST for details.

Solderless terminals



**FLANGED SPADE TONGUE (B type) Vinyl-insulated (funnel-entry)**

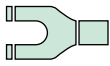


Certificate No.: E42024 LR20812

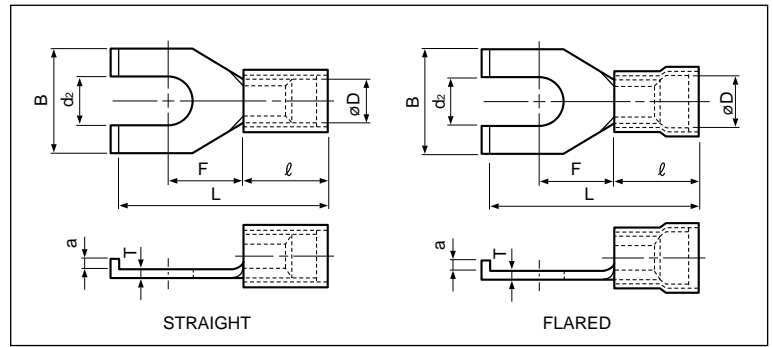
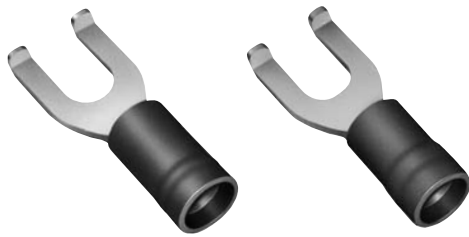
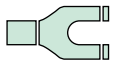
| Applicable Wire<br>AWG#(mm²) | Stud size |        | Part No.   | Standard | Dimensions mm (in.) |             |             |             |            |             |            |            | Color  | Tool No.                                      | Qty/box |
|------------------------------|-----------|--------|------------|----------|---------------------|-------------|-------------|-------------|------------|-------------|------------|------------|--------|---|---------|
|                              | American  | Metric |            |          | d <sub>2</sub>      | B           | L           | F           | a          | ℓ           | ø D        | T          |        |   |         |
| 22 to 16<br>*(0.25 to 1.65)  | 1/4       | 6      | FVX1.25-6B |          | 6.4 (.252)          | 13.5 (.531) | 30.0(1.181) | 11.7 (.461) | 1.5 (.059) | 10.8 (.425) | 4.0 (.157) | 0.8 (.031) | Red    | YNT-2216<br>YA-1<br>YA-2<br>YA-4<br>BCT-0514L | —       |
| 16 to 14<br>(1.04 to 2.63)   | 5-6       | 3.5    | FVX2-T3B   |          | 3.7 (.146)          | 7.5 (.295)  | 19.5 (.768) | 5.2 (.205)  | 1.5 (.059) | 10.8 (.425) | 4.6 (.181) | 0.8 (.031) | Blue   | YNT-1614<br>YA-1<br>YA-2<br>YA-4<br>BCT-0514L | 1,000   |
|                              | 8         | 4      | FVX2-T4B   |          | 4.3 (.169)          | 7.5 (.295)  | 19.5 (.768) | 5.2 (.205)  | 1.0 (.039) |             |            |            |        |   |         |
|                              | 8         | 4      | FVX2-E4B   |          | 4.3 (.169)          | 8.5 (.335)  | 21.2 (.835) | 7.3 (.287)  | 1.5 (.059) |             |            |            |        |   |         |
|                              | 1/4       | 6      | FVX2-6B    |          | 6.4 (.252)          | 13.5 (.531) | 30.0(1.181) | 11.7 (.461) | 1.5 (.059) |             |            |            |        |   |         |
| 12 to 10<br>(2.63 to 6.64)   | 10        | 5      | FVX5.5-E5B |          | 5.3 (.209)          | 9.6 (.378)  | 24.7 (.972) | 7.5 (.295)  | 1.5 (.059) | 14.0 (.551) | 6.8 (.268) | 1.0 (.039) | Yellow | YNT-1210S<br>YA-4<br>BCT-0514L                | 500     |

- Note:1) The part numbers indicated in the above table are for products with a brazed seam.  
When ordering products with a butted seam, add the prefix "WS" to the part number (ex. FVX2-4B → **FVXWS2-4B**).
- 2) \*The crimping will be more secure if the total cross-sectional area of the wire is at least 0.5 mm<sup>2</sup>.  
Examples: If the cross-sectional area of the wire is 0.3 mm<sup>2</sup>, fold the wire in two when crimping the terminal.  
If the cross-sectional area of the wire is 0.5 mm<sup>2</sup>, crimp the terminal onto the wire as it is.
- 3) Delivery lead times may vary depending on the product. Contact JST for details.

Solderless terminals



# FLANGED SPADE TONGUE (B type) Vinyl-insulated with copper sleeve



Certificate No.: E42024 LR20812

| Applicable Wire<br>AWG#(mm <sup>2</sup> ) | Stud size |           | Part No.    |             | Standard    | Dimensions mm (in.) |             |             |             |            |             |            |            |            |        | Color   | Tool No.   | Qty/box |
|---|-----------|-----------|-------------|-------------|-------------|---------------------|-------------|-------------|-------------|------------|-------------|------------|------------|------------|--------|---|------------|---------|
|   | American  | Metric    | Straight    | Flared      |             | d <sub>2</sub>      | B           | L           | F           | a          | ℓ           | ø D        |            | T          |        |   |            |         |
|   |           |           |             |             |             |                     |             |             |             |            |             | Str.       | Fld.       |            |        |   |            |         |
| 26 to 22<br>(0.2 to 0.5)                  | 1-2       | 2         | VD0.5-2B    | –           |             | 2.2 (.087)          | 4.6 (.181)  | 15.6 (.614) | 4.5 (.177)  | 1.0 (.039) | 8.0 (.315)  | 2.2 (.087) | 2.5 (.098) | 0.5 (.020) | Yellow | YNT-2622<br>YA-1, YA-2<br>BCT-0514L           | 1,000      |         |
| 22 to 16<br>*(0.25 to 1.65)               | 5-6       | 3.5       | VD1.25-YS3B | –           |             | 3.7 (.146)          | 6.4 (.252)  | 19.0 (.748) | 6.3 (.248)  | 0.8 (.031) | 9.6 (.378)  | 3.5 (.138) | 4.0 (.157) | 0.8 (.031) | Red    | YNT-2216<br>YA-1<br>YA-2<br>YA-4<br>BCT-0514L | 1,000      |         |
|   | 5-6       | 3.5       | VD1.25-S3B  | FVD1.25-S3B |             | 3.7 (.146)          | 7.5 (.295)  | 17.9 (.705) | 5.1 (.201)  | 1.5 (.059) |             |            |            |            |        |   |            |         |
|   | 5-6       | 3.5       | VD1.25-3B   | FVD1.25-3B  |             | 3.7 (.146)          | 8.5 (.335)  | 22.3 (.878) | 7.2 (.283)  | 0.8 (.031) |             |            |            |            |        |   |            |         |
|   | 8         | 4         | VD1.25-YS4B | –           |             | 4.3 (.169)          | 6.4 (.252)  | 19.0 (.748) | 6.3 (.248)  | 0.8 (.031) |             |            |            |            |        |   |            |         |
|   | 8         | 4         | VD1.25-S4B  | FVD1.25-S4B |             | 4.3 (.169)          | 7.5 (.295)  | 17.9 (.705) | 5.1 (.201)  | 1.5 (.059) |             |            |            |            |        |   |            |         |
|   | 8         | 4         | VD1.25-4B   | FVD1.25-4B  |             | 4.3 (.169)          | 8.5 (.335)  | 23.3 (.917) | 7.2 (.283)  | 0.8 (.031) |             |            |            |            |        |   |            |         |
|   | 10        | 5         | VD1.25-5B   | FVD1.25-5B  |             | 5.3 (.209)          | 8.5 (.335)  | 23.3 (.917) | 7.2 (.283)  | 1.5 (.059) |             |            |            |            |        |   |            |         |
| 1/4                                       | 6         | VD1.25-6B | FVD1.25-6B  | 6.4 (.252)  | 13.5 (.531) | 28.8(1.134)         | 11.7 (.461) | 1.5 (.059)  | 500         |            |             |            |            |            |        |   |            |         |
| 16 to 14<br>(1.04 to 2.63)                | 5-6       | 3.5       | VD2-YS3B    | –           |             | 3.7 (.146)          | 6.4 (.252)  | 19.2 (.756) | 6.3 (.248)  | 0.8 (.031) | 9.6 (.378)  | 4.1 (.161) | 4.7 (.185) | 0.8 (.031) | Blue   | YNT-1614<br>YA-1<br>YA-2<br>YA-4<br>BCT-0514L | 1,000      |         |
|   | 5-6       | 3.5       | VD2-T3B     | FVD2-T3B    |             | 3.7 (.146)          | 7.5 (.295)  | 18.3 (.720) | 5.2 (.205)  | 1.5 (.059) |             |            |            |            |        |   |            |         |
|   | 5-6       | 3.5       | VD2-S3B     | –           |             | 3.7 (.146)          | 8.5 (.335)  | 19.6 (.772) | 7.2 (.283)  | 0.8 (.031) |             |            |            |            |        |   |            |         |
|   | 5-6       | 3.5       | VD2-3B      | FVD2-3B     |             | 3.7 (.146)          | 8.5 (.335)  | 21.8 (.858) | 7.2 (.283)  | 1.5 (.059) |             |            |            |            |        |   |            |         |
|   | 8         | 4         | VD2-T4B     | –           |             | 4.3 (.169)          | 7.5 (.295)  | 18.3 (.720) | 5.2 (.205)  | 0.8 (.031) |             |            |            |            |        |   |            |         |
|   | 8         | 4         | VD2-S4B     | –           |             | 4.3 (.169)          | 8.5 (.335)  | 19.6 (.772) | 7.2 (.283)  | 1.5 (.059) |             |            |            |            |        |   |            |         |
|   | 8         | 4         | VD2-E4B     | –           |             | 4.3 (.169)          | 8.5 (.335)  | 20.0 (.787) | 7.3 (.287)  | 1.0 (.039) |             |            |            |            |        |   |            |         |
|   | 8         | 4         | VD2-4B      | FVD2-4B     |             | 4.3 (.169)          | 8.5 (.335)  | 21.8 (.858) | 7.3 (.287)  | 1.5 (.059) |             |            |            |            |        |   |            |         |
| 10  | 5         | VD2-5B    | FVD2-5B     | 5.3 (.209)  | 8.5 (.335)  | 21.8 (.858)         | 7.3 (.287)  | 1.5 (.059)  | 500         |            |             |            |            |            |        |   |            |         |
| 1/4                                       | 6         | VD2-6B    | FVD2-6B     | 6.4 (.252)  | 13.5 (.531) | 28.8(1.134)         | 11.7 (.461) | 1.5 (.059)  | 500         |            |             |            |            |            |        |   |            |         |
| 12 to 10<br>(2.63 to 6.64)                | 5-6       | 3.5       | VD5.5-S3B   | FVD5.5-S3B  |             | 3.7 (.146)          | 7.6 (.299)  | 25.2 (.992) | 6.2 (.244)  | 1.5 (.059) | 14.0 (.551) | 5.7 (.224) | 6.5 (.256) | 1.0 (.039) | Yellow | YNT-1210S<br>YA-4<br>BCT-0514L                | 500        |         |
|   | 5-6       | 3.5       | VD5.5-3B    | FVD5.5-3B   |             | 3.7 (.146)          | 8.5 (.335)  | 26.7(1.051) | 7.5 (.295)  |            |             |            |            |            |        |   |            |         |
|   | 8         | 4         | VD5.5-S4B   | FVD5.5-S4B  |             | 4.3 (.169)          | 7.6 (.299)  | 25.2 (.992) | 6.2 (.244)  |            |             |            |            |            |        |   |            |         |
|   | 8         | 4         | VD5.5-4B    | –           |             | 4.3 (.169)          | 8.5 (.335)  | 26.7(1.051) | 7.5 (.295)  |            |             |            |            |            |        |   |            |         |
|   | 10        | 5         | VD5.5-5B    | FVD5.5-5B   |             | 5.3 (.209)          | 8.5 (.335)  | 26.7(1.051) | 7.5 (.295)  |            |             |            |            |            |        |   |            |         |
|   | 10        | 5         | VD5.5-E5B   | FVD5.5-E5B  |             | 5.3 (.209)          | 9.5 (.374)  | 24.7 (.972) | 7.5 (.295)  |            |             |            |            |            |        |   |            |         |
|   | 1/4       | 6         | VD5.5-6B    | FVD5.5-6B   |             | 6.4 (.252)          | 13.5 (.531) | 33.7(1.367) | 12.2 (.480) |            |             |            |            |            |        |   | 1.5 (.059) | 250     |

Note: 1) The part numbers indicated in the above table are for products with a brazed seam.

When ordering products with a butted seam, add the prefix "WS" to the part number (ex. FVD2-4B → **FVDWS2-4B**).

2) To order products with nylon insulation, change the "V" in the part number prefix to "N" (ex. VD2-4B → **ND2-4B**).

Because nylon absorbs moisture, care must be taken concerning storage.

3) Delivery lead times may vary depending on the product. Contact JST for details.