

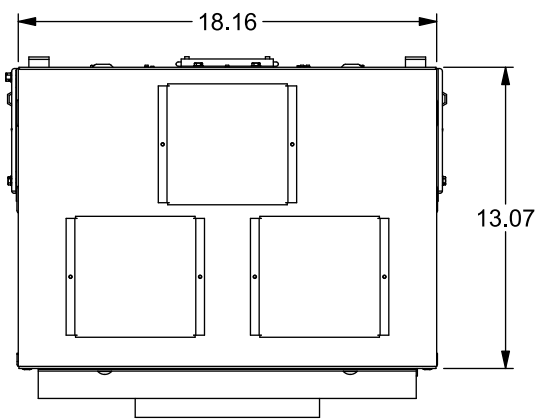
Features

- Type 3R Outdoor Enclosure
- Main Bus Rating: 1200A Max.
- 208Y/120 Volts~, 3 Phase, 4 Wire
240/120 Volts~, 3 Phase, 4 Wire
- (1) QuickConnect™ included
- Electronic Breaker with Maintenance Mode DAS®

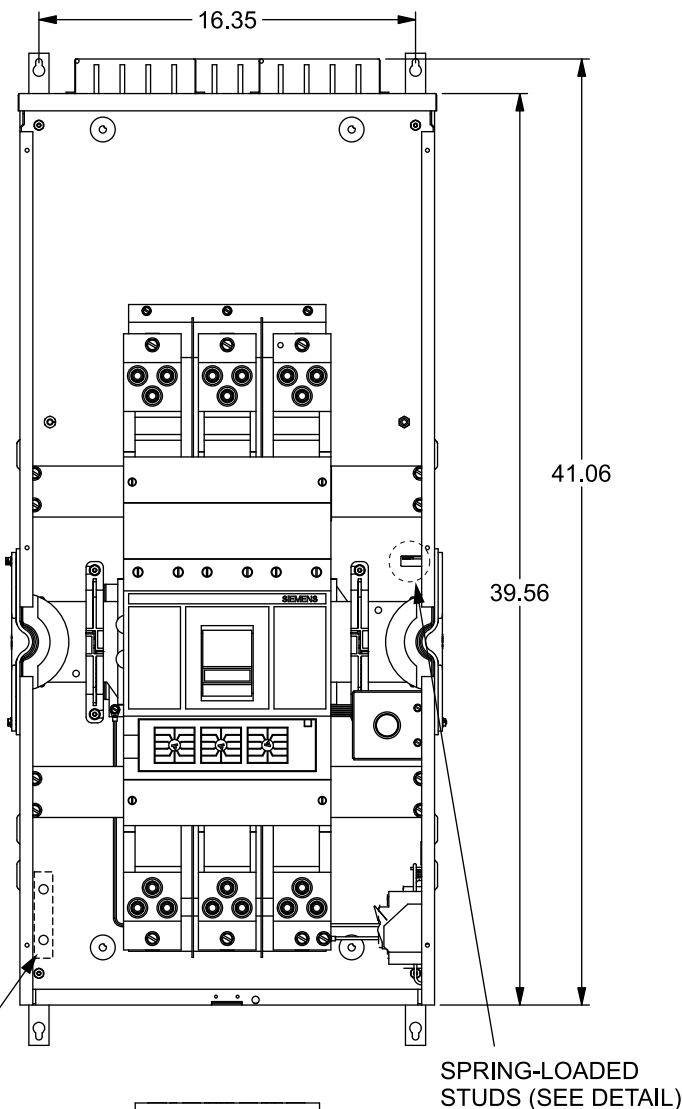


Catalog Numbers

Catalog No.	Phase	Amperage Rating, Max.	Maximum Interrupting Rating
WXBM31200N	3	1200	65,000
WXBM31200NU	3	1200	100,000

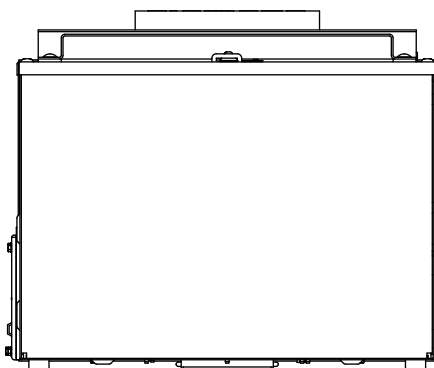


View Shown with Cover Removed



GROUND BAR PROVISION

SPRING-LOADED STUDS (SEE DETAIL)



Accessories

Ground Bar Kit: Catalog No. ECGB10

Terminal	Wire Size	Torque
Equipment	#10 - #14 CU	20 lb-in
Ground Bar	#10 - #12 AL	20 lb-in
	#8 CU/AL	25 lb-in
	#6 - #4 CU/AL	35 lb-in

USE ONLY NON-INTERCHANGEABLE TRIP BREAKER TYPES

Breaker Type	Rating
SND6	65k AIC
SHND6	100k AIC

Accessory Description . Catalog No.

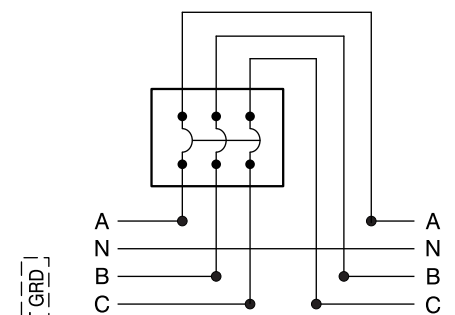
Breaker Cover Repl. ECMMBCL
 Cover Screws ECMFCS
 Loose Parts Kit ECMFPK
 Mounting Tabs (2) ECMFTAB
 QuickRoll Wheel Clip ECMFWLCLIP
 End Closure Plate WMEP
 Mounting Clip MMCLIP
 Wall Mounting Rail (60") MMZR60
 Mounting Rail MMRAIL

Additional Modules

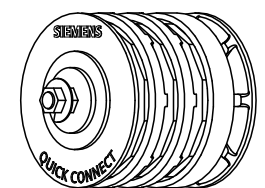
FOR USE WITH: Module Description	Siemens Series#
Main Breakers	WB(M), WEB(M), WXB(M), BFT(M)
Switches	WMP, WS, WES, WXS
Tap/Terminal Boxes	WTB, WET, WT_PU, WTBN, WBT(M)
Pull Boxes	WMMB
Meter Module	(W)MM, (W)MT, (W)ML, (W)MK, (W)MLZ(F), (W)MN
Meter Combinations	WC, WCL, WCT
Extension Box	WSP, WSPD
Bussed Elbow	BE, WELB

Connect Modules Using:	Catalog Number / Torque
QuickConnect, 3 Phase	QC4, Torque 400-440 lb-in (35-36 ft.-lb.)

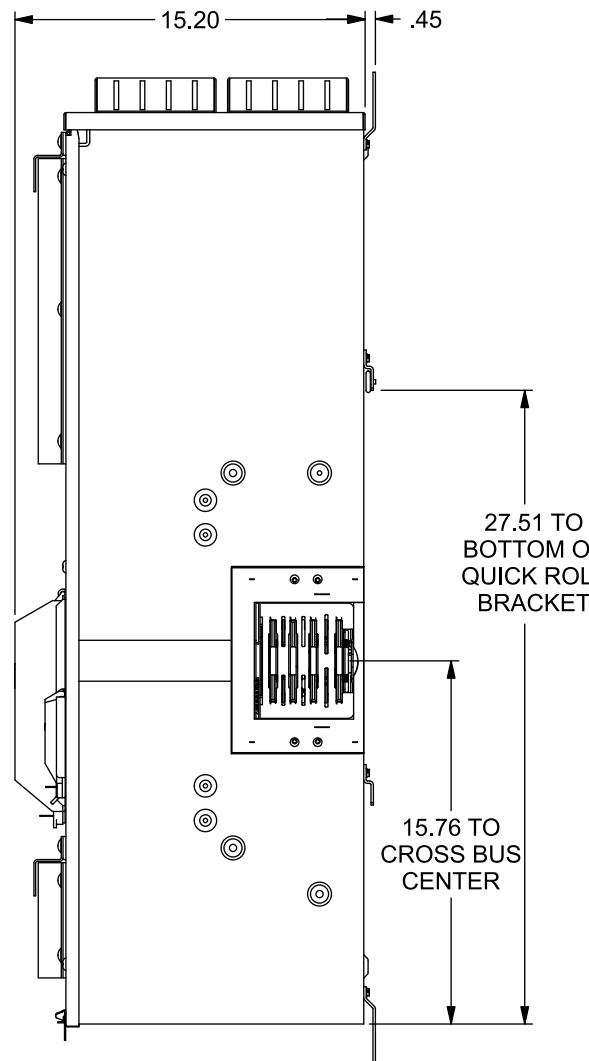
Schematic



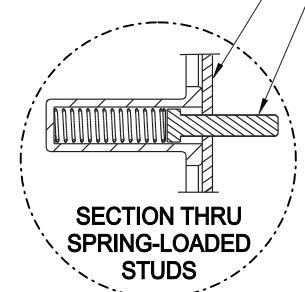
When this module is used as a Service Disconnect, apply "Service Disconnect" label near the breaker handle cover. In all other applications, apply the "Feeder Breaker" label near the breaker handle cover.



QuickConnect™ Included



#10-32 x 7/8 SCREWS ENCLOSURE WALL



© 2019 Copyright Siemens Industry, Inc.

SIEMENS
Siemens Industry, Inc.

PowerMod™ Cross Bus Main

Description: **3 Phase, 1200A, 65k-100kAIC, DAS Modules**

KAM 2/26/19 DO NOT SCALE DRAWING Dwg No. **WXBM31200N-NU**