

Catalog Numbers

Catalog No.	Amperage Rating	Max. Interrupting Rating
3 PHASE, 4 WIRE, 240V AC MAX		
WBV3450T	450	85,000
WBV3450TU	450	100,000
WBV3500T	500	85,000
WBV3500TU	500	100,000
WBV3600T	600	85,000
WBV3600TU	600	100,000



- TYPE 3R OUTDOOR ENCLOSURE
- MAIN BUS RATING: 1200A MAX., 240V AC Max.
- 3 PHASE
- FOR OVERHEAD SERVICE ONLY
- 3VA BREAKER TECHNOLOGY
- MOUNTING RAILS AND ADJUSTABLE BRACKETS FOR SECURE MOUNTING

Accessories

Ground Bar Kit ECLX069M
 Ground Lug Kit (3 Position) ECGLK3300, (3) #6-300kcmil,
 Torque 250 lb-in
 Ground Lug Kit (6 Position) ECGLK6300, (6) #6-300kcmil,
 Torque 250 lb-in
 Breaker Lug Kit (factory installed) LK32500 (kit includes 4 lugs)

Equip Ground Acc'y Cat. No. ECLX069M

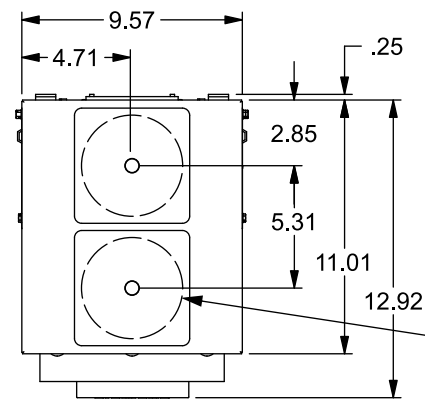
Small Terminals	Large Terminals
Wire Range / Torque	Wire Range / Torque
10-14 AWG 20 lb-in	10-14 AWG 35 lb-in
8 AWG 25 lb-in	8 AWG 40 lb-in
6 AWG 35 lb-in	1/0-6 AWG . 45 lb-in

HD Type Hubs	Catalog No.
Hub Cover Plate	EC56933S
Type HD Hub 2"	EC56854
Type HD Hub 2-1/2"	EC56855
Type HD Hub 3"	EC56856
Type HD Hub 3-1/2"	EC56857
Type HD Hub 4"	EC56858

Additional Modules

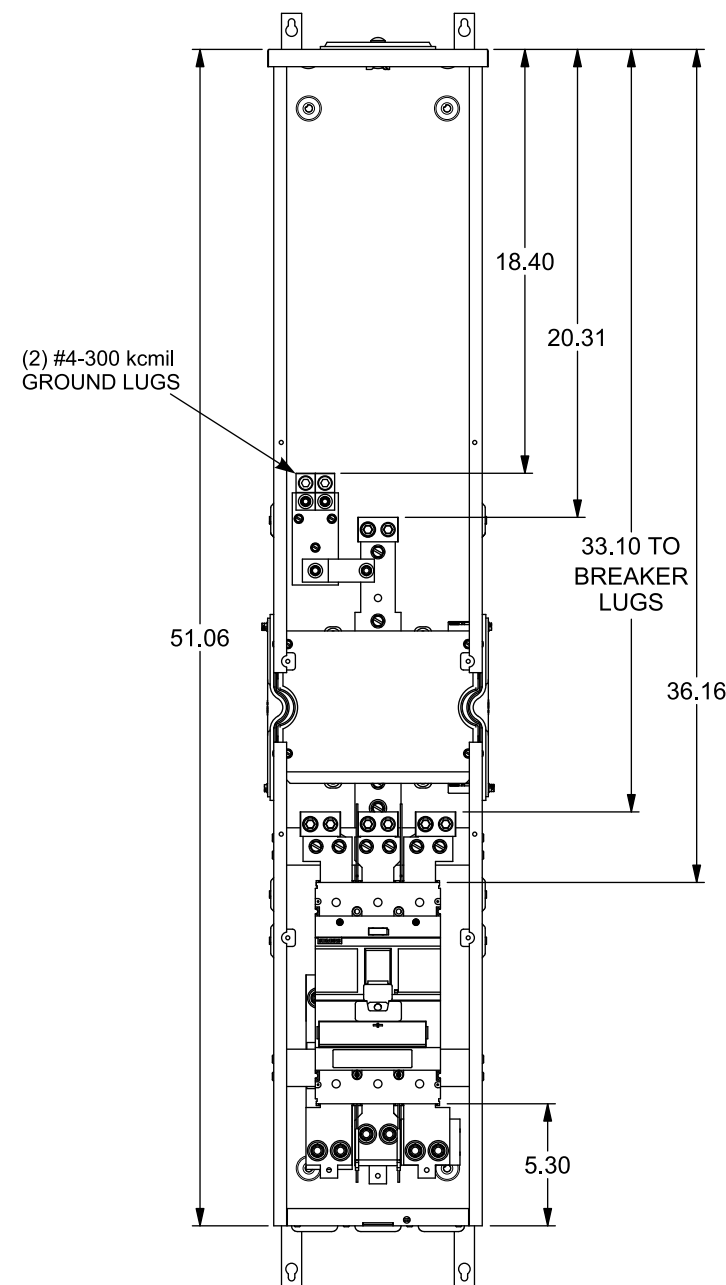
Module Description	Series#
Main Breakers	WB(M), WEB(M), WBV, WXB(M), BFT(M)
Switches	WMP, WS, WES, WXS
Tap/Terminal Boxes	WTB, WET, WT_PU, WTBN, WBT(M)
Pull Boxes	WMMB
Meter Module	(W)MM, (W)MT, (W)ML, (W)MK, (W)MLZ(F), (W)MN
Meter Combinations	WC, WCL, WCT,
Extension Box	WSP, WSPD, SPT
Bussed Elbow	BE, WELB, ELBT

Connect Modules Using:	Catalog Number / Torque
QuickConnect	QC4, Torque 400-440 lb-in (35-36 ft.-lb.)

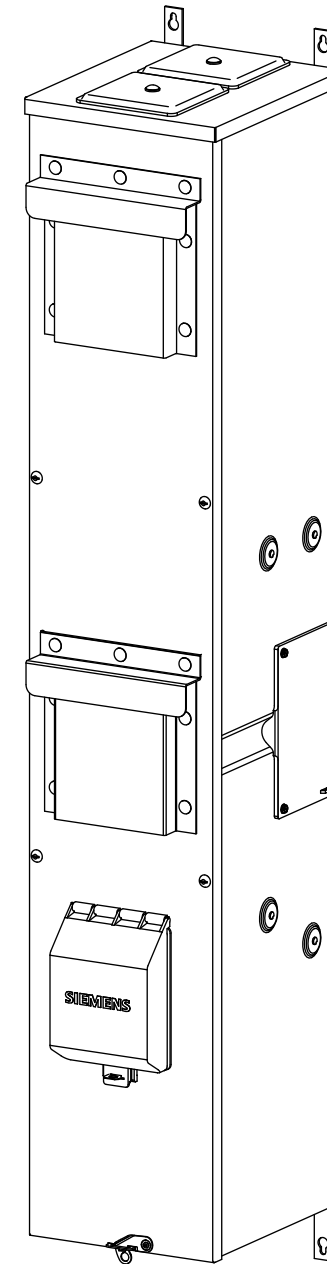
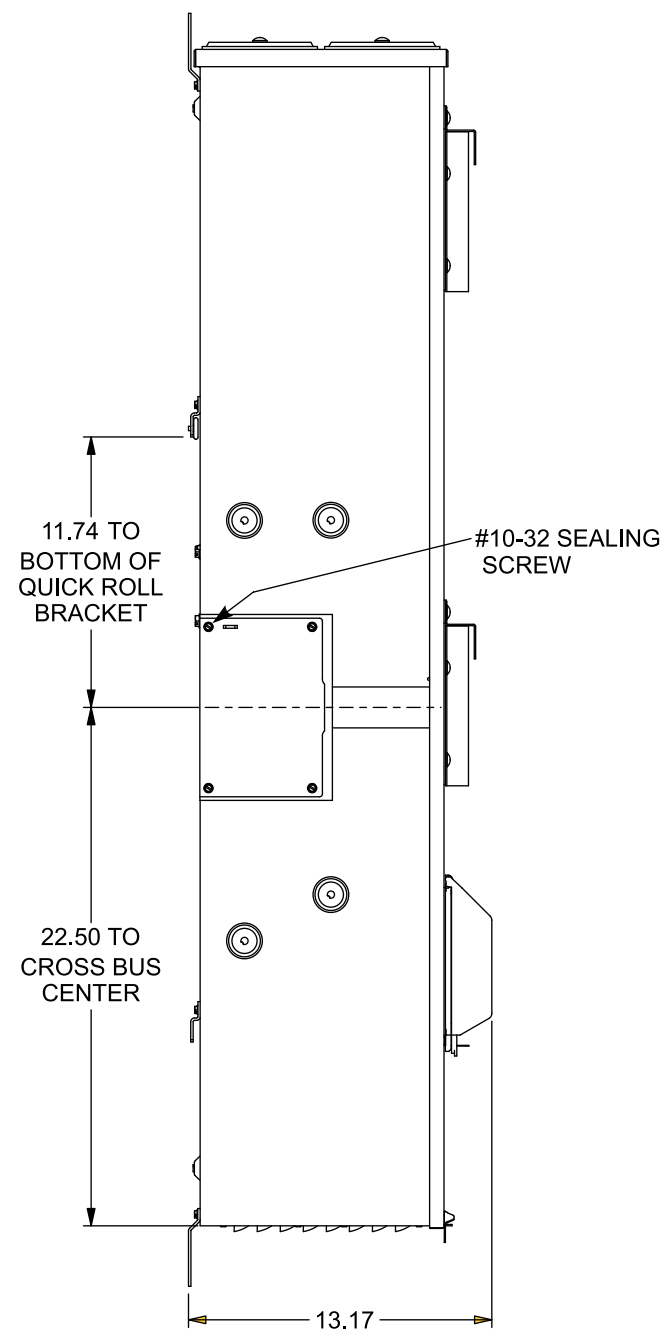


(2) TYPE "HD" 4" MAX HUB OPENINGS,
 FACTORY INSTALLED COVER PLATES

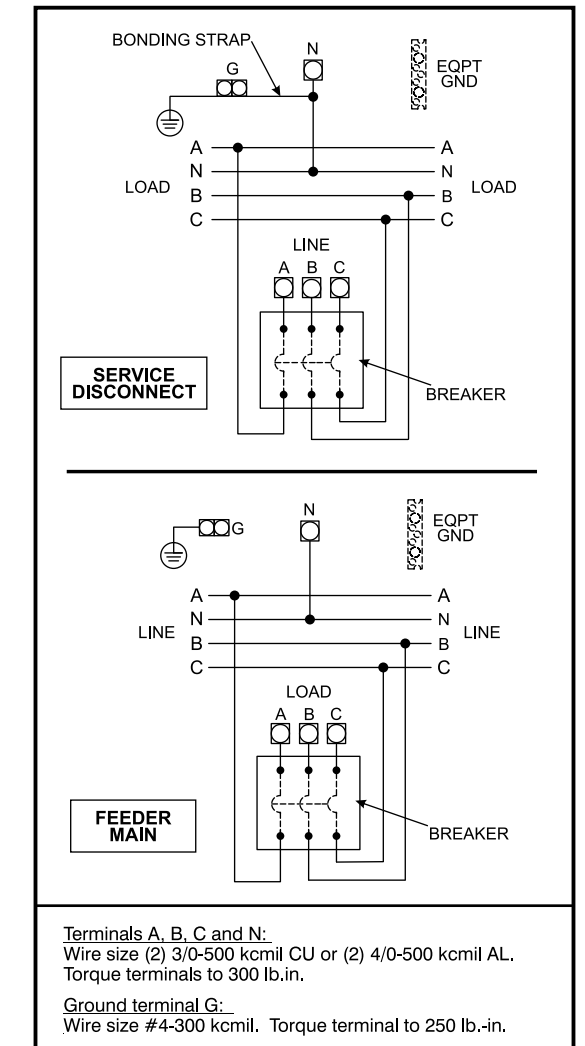
FRONT VIEW SHOWN WITH COVER AND SHIELDS REMOVED



(2) #4-300 kcmil
 GROUND LUGS



Schematic



© 2022 Copyright Siemens Industry, Inc.

SIEMENS
 Siemens Industry, Inc.

PowerMod™ Breaker Mains

Description: **WBV 450-600A, 3 Phase,
 Top Feed Skinny Mains (3VA)**

KAM 9/28/22 DO NOT SCALE DRAWING Dwg. No. **WBV3450T-WBV3600TU**