

1

Mounting the HMI device 安装 HMI 设备

1.1 Important information – 重要信息

This document provides simple installation instructions. Complete installation, commissioning and safety instructions are described in the operating instructions manual.



本文档仅仅是安装说明。完整的安装、调试以及安全指南，可参考操作说明手册。



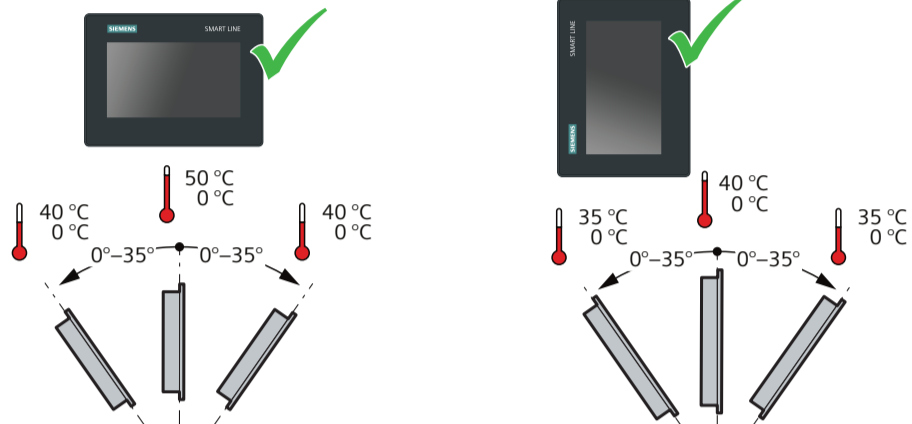
<https://new.siemens.com/cn/zh/products/automation/simatic-hmi/panels/smart-line.html>



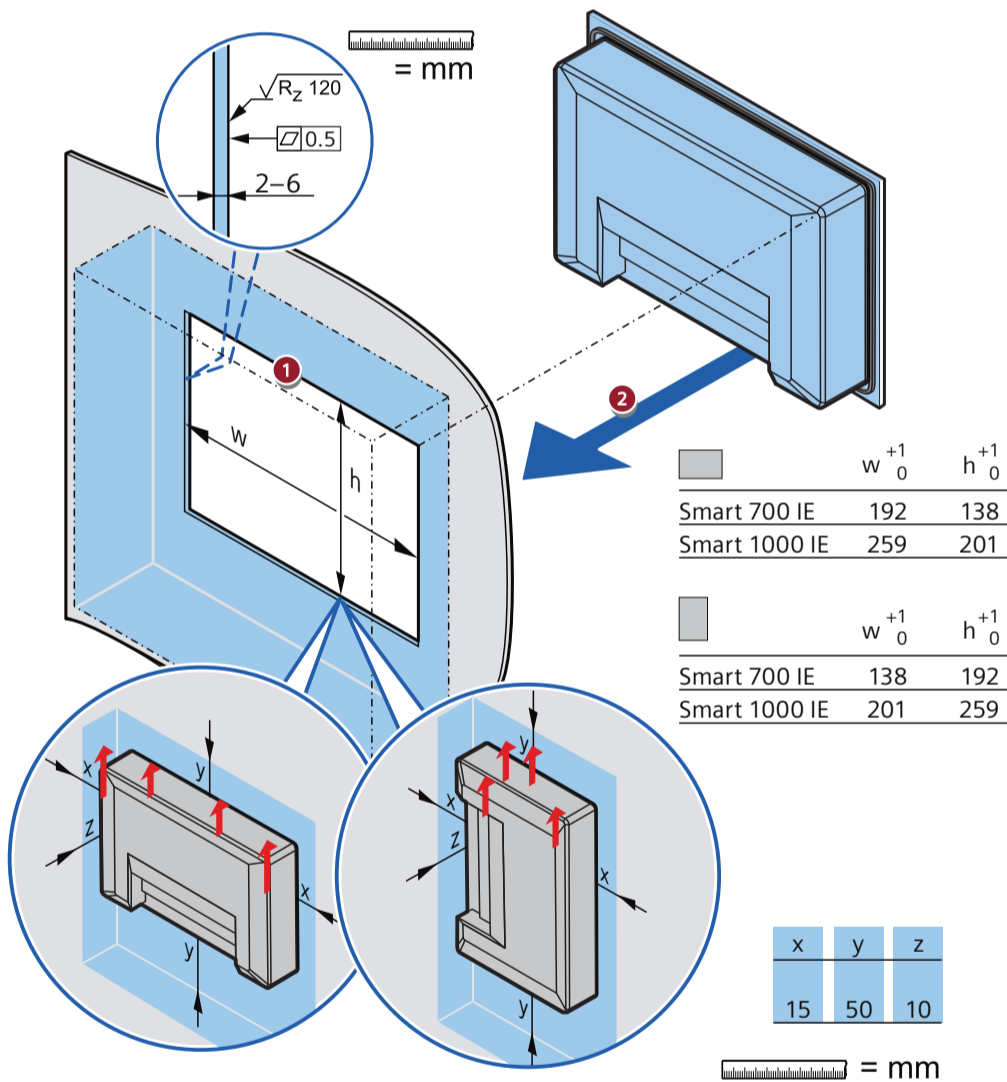
1.2 Valid Mounting positions – 有效的安装位置

Horizontal mounting 水平安装

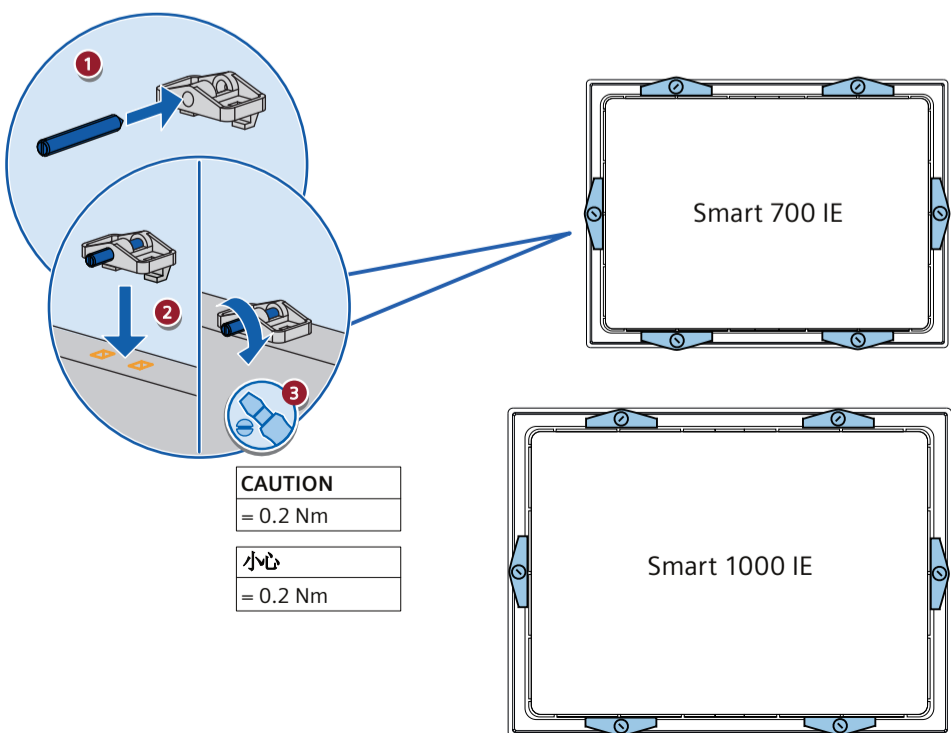
Vertical mounting 垂直安装



1.3 Installing the HMI device – 安装 HMI 设备



1.4 Mounting the HMI device – 安装 HMI 设备



2

Connecting the HMI device 连接 HMI 设备

2.1 Important information – 重要信息

CAUTION

Ensure that you install sufficient strain relief for all connection cables on the outside of the HMI device.

小心

请确保在 HMI 设备外部为所有连接电缆安装足够的张力消除装置。

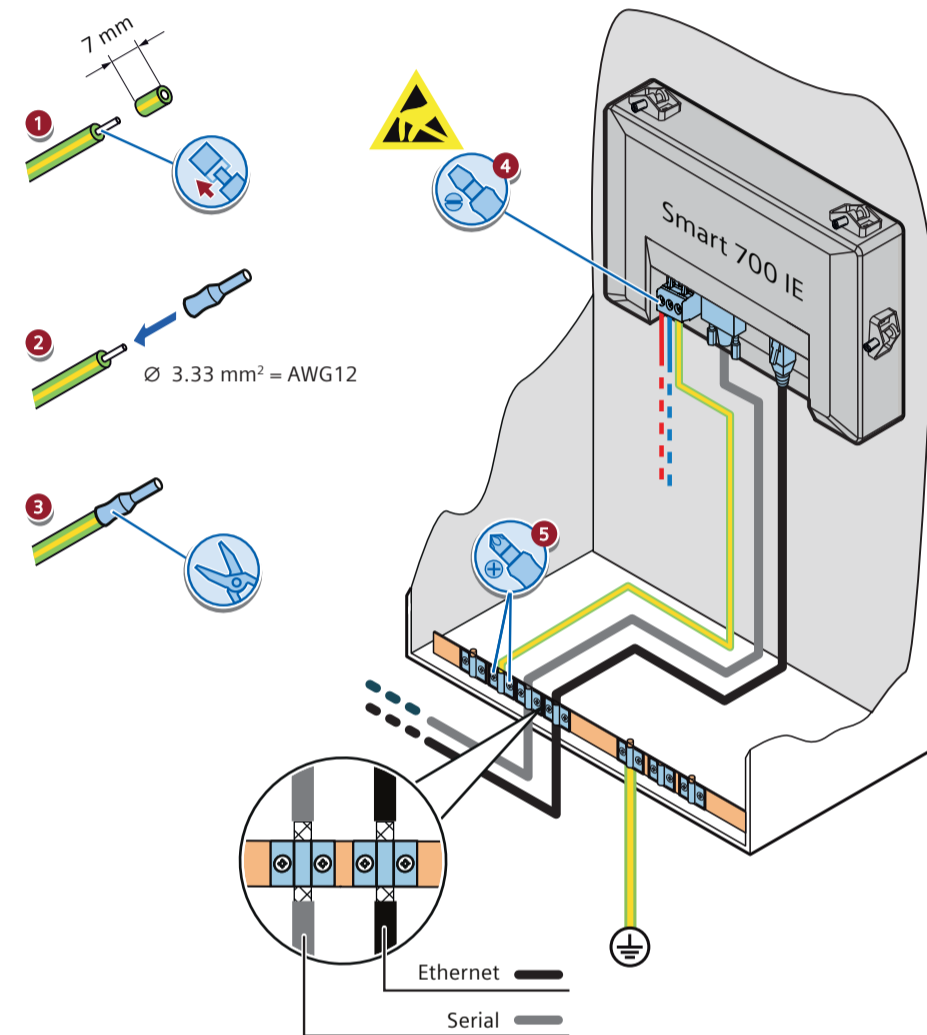
2.2 Connecting the function earth – 接地保护

CAUTION

ESD – Electrostatic Sensitive Device
When mounting the HMI device, make sure that the person, the workplace and the packaging are properly grounded.

小心

ESD – 静电敏感设备
安装 HMI 设备时，请确保人员、工作台和整体设备正确接地。



CAUTION

Route the grounding cable and data cables in parallel with minimum clearance.

小心

以最小间距，平行敷设接地线和数据电缆。

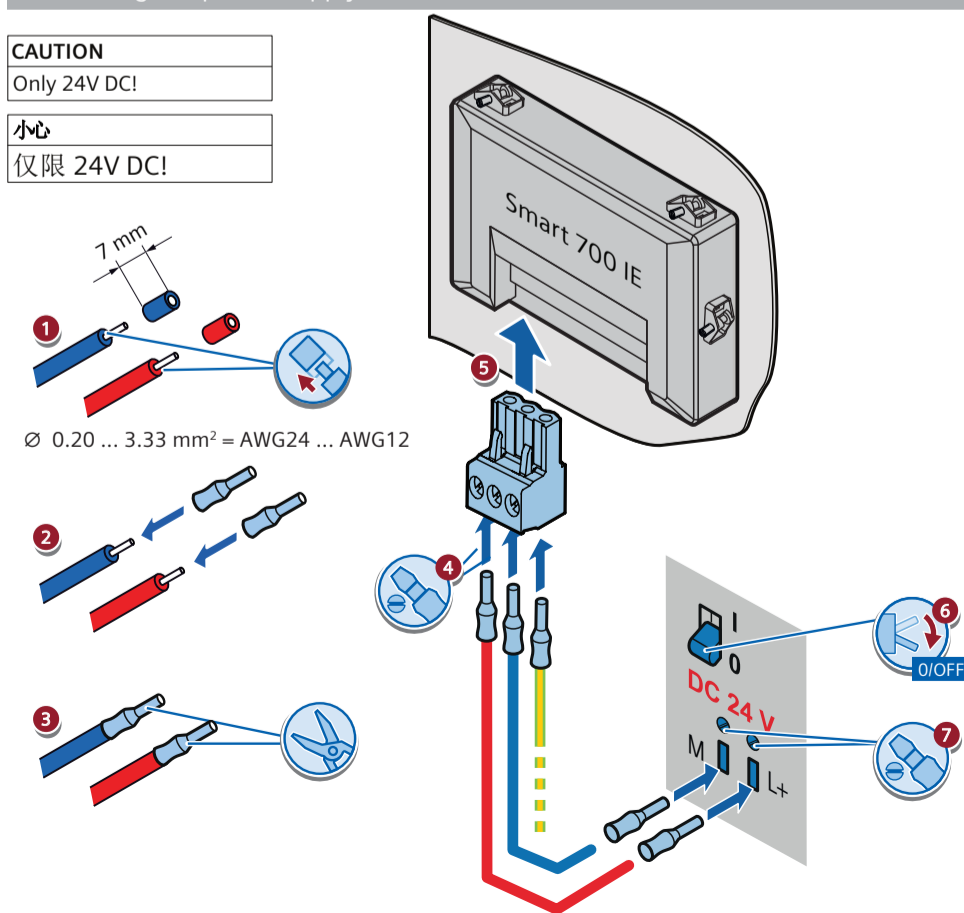
2.3 Connecting the power supply – 连接电源

CAUTION

Only 24V DC!

小心

仅限 24V DC!



3

Downloading a project 下载项目

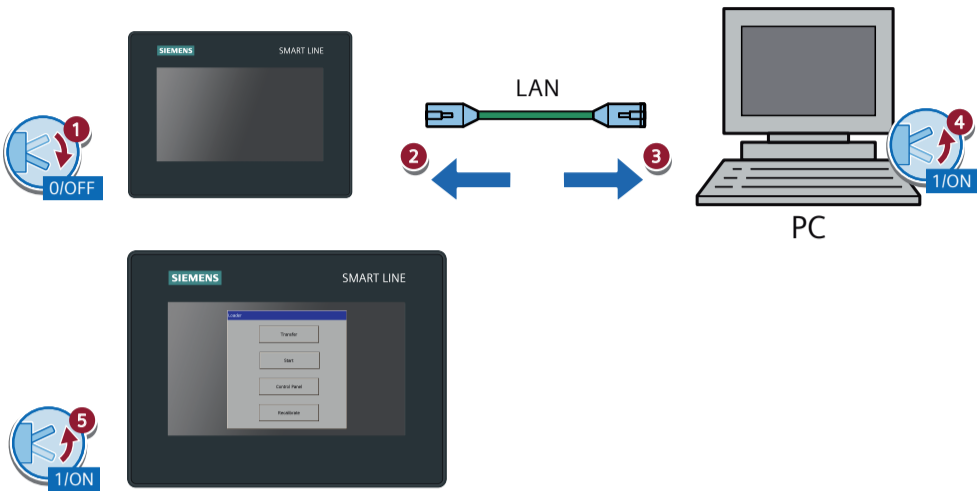
3.1 Connecting a configuring PC – 连接组态 PC

CAUTION

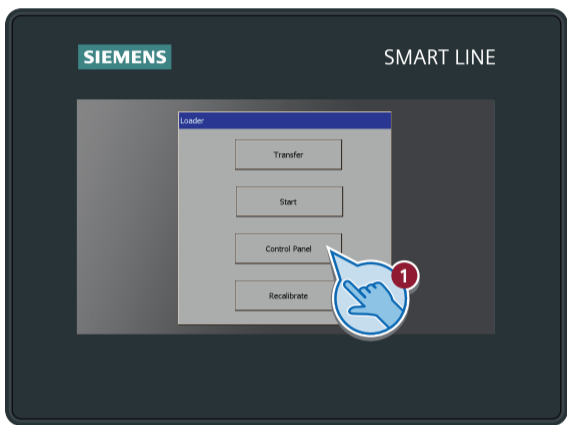
Downloading a project will overwrite the current project on your HMI device.
If required, save existing data before the download.

小心

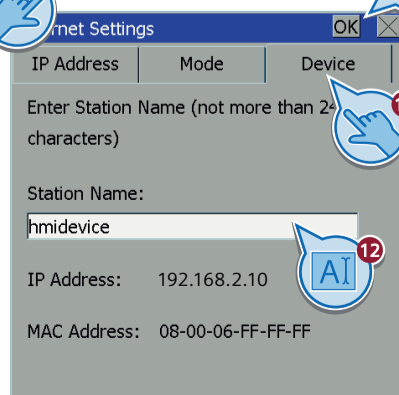
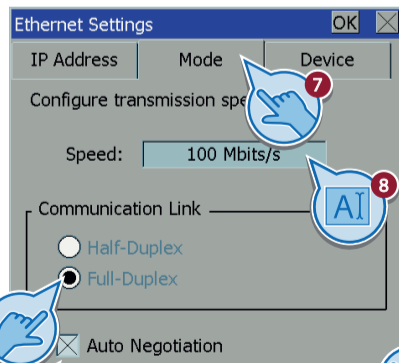
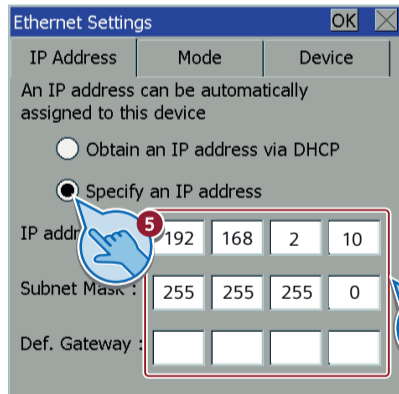
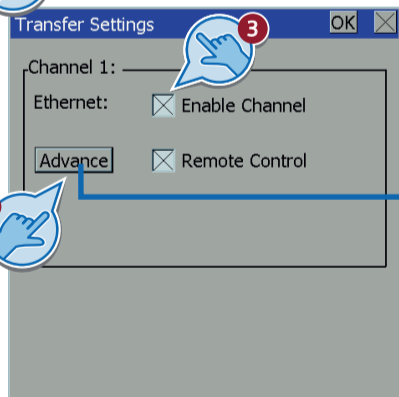
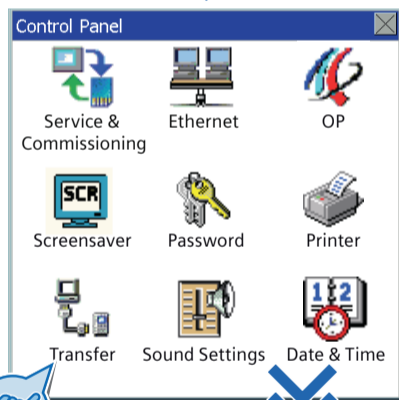
下载项目时，HMI 设备中的当前项目将被覆盖。
根据需要，在下载前保存现有数据。



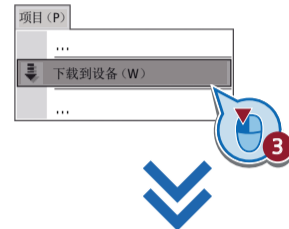
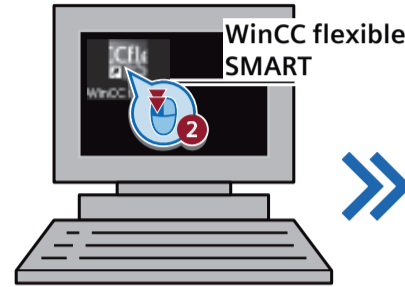
3.2 Configuring the data channel – 组态数据通道



<https://new.siemens.com/cn/zh/products/automation/simatic-hmi/panels/smart-line.html>



3.3 Starting transfer – 启动传送



4

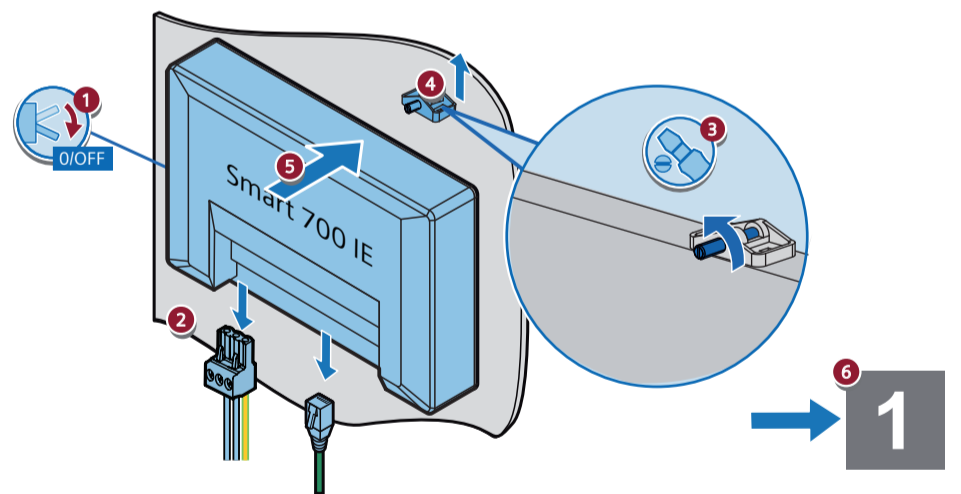
Replacing the HMI device 更换 HMI 设备

CAUTION

If required, save existing data before replacing the HMI device.

小心

根据需要，在更换 HMI 设备前保存现有数据。



SIEMENS

SIMATIC HMI
Smart 700 IE V4
Smart 1000 IE V4

Technical Support
技术支持

<https://support.industry.siemens.com>



Service and spare parts
维修和备件

<https://support.industry.siemens.com/cs/ww/en/sc/2110>



01/2023
A5E51508115-AB



Mounting the HMI device
安装 HMI 设备

1

Connecting the HMI device
连接 HMI 设备

2

Downloading a project
下载项目

3

Replacing the HMI device
更换 HMI 设备

4