

SIEMENS

Indoor Meter Module

Catalog Number
ML42125RJ

Enclosure
Type 1

Ratings: Main Bus Rating: 1200 Amps.
208Y/120 Volts AC, 3 Phase, 4 Wire
See adjacent label for Short Circuit Current Rating.
Meter Socket Rating: 200 Amps. Continuous
Branch Rating: 125 Amps. Max. See Breaker Ratings

WARNING: This meter module may be used on a 240/120 Volts AC, 3 Phase, 4 Wire Delta system when none of the meter sockets in this module are connected to B Phase. B Phase will be high leg on 3 Phase 4 Wire Delta systems.

Suitable For Use As Service Equipment when used in combination with Siemens Modular Terminal Box Series WMTB, WTB, WET, or WT_PU and no more than six main disconnecting means are provided.

For installation by a qualified person, in accordance with all electrical codes and/or the National Electrical Code ®.

Terminals:
Use Copper or Aluminum Wire at all panel terminals. Suitable for 60°/75°C Conductors.
See breaker markings for wire size and torque requirements.

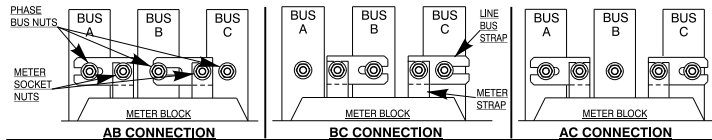
Neutral Terminal and Ground Terminal :
Wire Size #4-2/0 AWG, Torque to 110 lb.-ins.

General Information: See enclosed instruction sheet for information on mounting units. Circuit breaker overload trip position is indicated by handle position midway between ON and OFF. To reset, move handle to OFF position then turn ON.

Rephasing Instructions Instrucciones para reajuste de fase

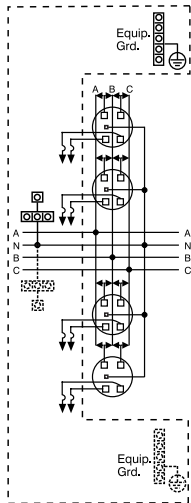
Factory installed phasing is AB, BC, AC and AB top to bottom. Each meter socket can be rephased AB, BC, or AC by repositioning line bus straps. If a different phase arrangement is needed, loosen hex nuts and reconnect one or both line bus straps, then retighten the hex nuts to 60-65 lb.-in. Tighten hex nut at meter socket first, then tighten hex nut on vertical phase bus.

Las fases AB, BC, AC y AB instaladas en fábrica de arriba hacia abajo. Cada receptáculo del medidor puede colocarse en fase AB, BC o AC reposicionando las correas del bus de la línea. Si se necesita una disposición de fase distinta, afloje las tuercas hexagonales y reconecte una o ambas correas del bus de la línea, luego vuelva a apretar las tuercas hexagonales a 60-65 libras-pulgada. Apriete primero la tuerca hexagonal en el receptáculo del medidor, luego apriete la tuerca hexagonal en el bus de fase vertical.



Siemens Industry, Inc. Norcross, Georgia U.S.A. **DH1** 40901038 0101 Rev.A

© The National Electrical Code is a registered trademark of the National Fire Protection Association.
© 2014 Copyright Siemens Industry, Inc.



SIEMENS

Short Circuit Current Rating: (Watt-hour meter not included in short circuit current rating). This panelboard has a maximum short circuit current rating of 65,000 Amps RMS symmetrical, 120/240 V~ maximum. The actual rating is dependent on the branch breakers installed in this panelboard and the main disconnect, if any, installed ahead of this panelboard. The correct branch breakers and main/branch breaker series combinations to be used for various short circuit current levels are listed in the tabulation below. Any circuit breaker installed, replaced, or added in this panelboard must be manufactured by Siemens and must be of the correct Type as indicated in the tabulation below.

| MAIN DISCONNECT | BRANCH BREAKER | Then the maximum short circuit current rating in RMS symmetrical Amperes, 120/240 V~ maximum is |
|---|--|---|
| When the main protecting the system is a | And the branch breakers installed are Siemens type | |
| NONE USED or Siemens Breaker Types JXD2(-A), JD6(-A), JXD6(-A), HJD6(-A), HJXD6(-A), LD6(-A), LXD6(-A), HLD6(-A), HLXD6(-A), MD6, MXD6, HMD6, HMXD6, ND6, NXD6, HND6, HNXD6, NJJA, NJGA, NJGA, NLGA, HLGA, NLGB, HLGB, NMG, HMG, NNG, HNG, NPG, HPG, PD6, PXD6, HPD6, HPXD6, RD6, RXD6, HRD6, HRXD6, or Class J, T, R, or L Fuses | QP, MP-T | 10,000 |
| NONE USED | QPH, MP-HT | |
| Siemens Breaker Types MD6, MXD6, HMD6, HMXD6, ND6, NXD6, HND6, HNXD6, NJJA, NJGA, HJGA, NLGA, HLGA, NLGB, HLGB, NMG, HMG, NNG, HNG, NPG, HPG, PD6, PXD6, HPD6, HPXD6, RD6, RXD6, HRD6, HRXD6, or Class J, T, R, or L Fuses | MP-HT | 22,000 |
| NONE USED | HQP, MP-MT | |
| Siemens Breaker Types JXD2(-A), JD6(-A), JXD6(-A), HJD6(-A), HJXD6(-A), LD6(-A), LXD6(-A), HLD6(-A), HLXD6(-A) | QPH, HQP, MP-HT, MP-MT | 65,000 |
| Siemens Breaker Types MD6, MXD6, HMD6, HMXD6, ND6, NXD6, HND6, HNXD6, NJJA, NJGA, HJGA, NLGA, HLGA, NLGB, HLGB, NMG, HMG, NNG, HNG, NPG, HPG, PD6, PXD6, HPD6, HPXD6, RD6, RXD6, HRD6, HRXD6, or Class J, T, R, or L Fuses | QPH, HQP, MP-MT | |

Warning: This equipment has been designed for use only with circuit breakers listed above. Use of other circuit breakers in this equipment could result in personal injury or property damage and may void the warranty.

IMPORTANT: Module For Use With Siemens Series#
Main Breakers (W)MC, WB, WEB, WXB
Switches WMP, WMS, WS, WES
Tap/Terminal Boxes WMTB, WTB, WET, WT_PU
Pull Boxes WMMB
Meter Module (W)MM, WxMM, (W)MT, (W)ML, (W)MK
Meter Combinations WC, WCL, WCT
Extension Box WMEX, WSP, WSPD
Bussed Elbow BE

Important: Do not allow petroleum based (hydrocarbon) sprays, chemicals, solvents or any paint to contact interior components. Petroleum based chemicals can cause degradation of electrical insulating materials.

Siemens Industry, Inc. Norcross, Georgia U.S.A. **DH1** 4749931 Rev.D

© 2013 Copyright Siemens Industry, Inc.

| Connect Modules Using: | | Catalog Number / Torque |
|------------------------|------------------------|--------------------------------------|
| QuickConnect | QC1 (1ph) or QC4 (3ph) | 400-440 lb-in (35-36 ft.-lb.) Torque |

Accessories:

| | |
|-------------------------------------|-------------|
| Description | Catalog No. |
| Meter Cover Plate | ECCP3 |
| End Closure Plate | WMEP |
| 125A Breaker Mounting | ECMFBM1 |
| Breaker Cover Repl | ECBC |
| Breaker HoldDown | ECMBR2 |
| Meter Cover, Ringless 10" | ECWML10 |
| Bottom Pull Cover | ECWMLC |
| Line/Phase Strap | ECWMLPS |
| Load Cover Screws | ECMFCS |
| Parts Kit | ECMPFK |
| Ground/Ntl Bar Kit | ECMFGN125 |
| KO Plate with Knockouts | ECMMKOP |
| KO Plate w/o Knockouts | ECMMNKOP |
| Mounting Tabs (2) | ECMFTAB |
| QuickRoll Wheel Clip | ECMFWLCLIP |
| Mounting Clip | MMCLIP |
| Wall Mounting Rail (60") | MMZR60 |
| Mounting Rail | MMRAIL |

47400017 0101 Rev.A