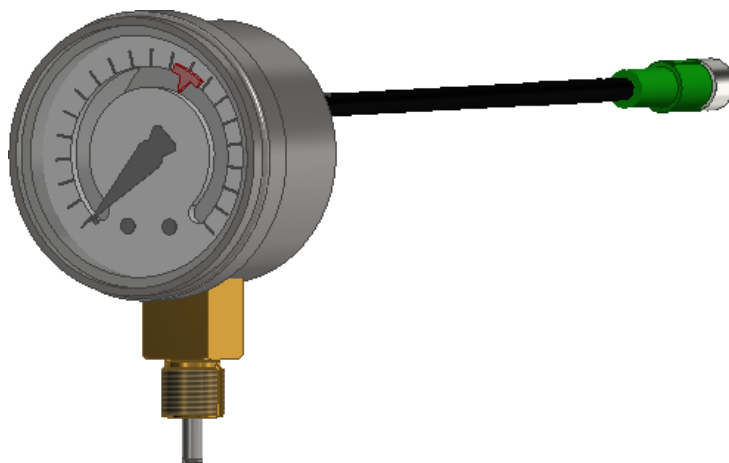


Sinorix™

## MANOF230-180, MANOF230-270

IG-01, IG-55, IG-100, IG-541



### Pressure gauge with electrical contacts for F230 cylinder valves

- Visual check of the cylinder pressure
- Transmission of "Extinguishant loss" information to the extinguishing control panel (ECP)
- Removable pressure gauge when the cylinder is pressurized

Product codes:

MANOF230-180 - S54476-F540-A3

MANOF230-270 - S54476-F540-A11

## Use

This product must only be used with Sinorix™ fixed automatic extinguishing systems.

## Functions

The contact pressure gauge allows the pressure in the cylinder on which it is mounted to be checked visually.

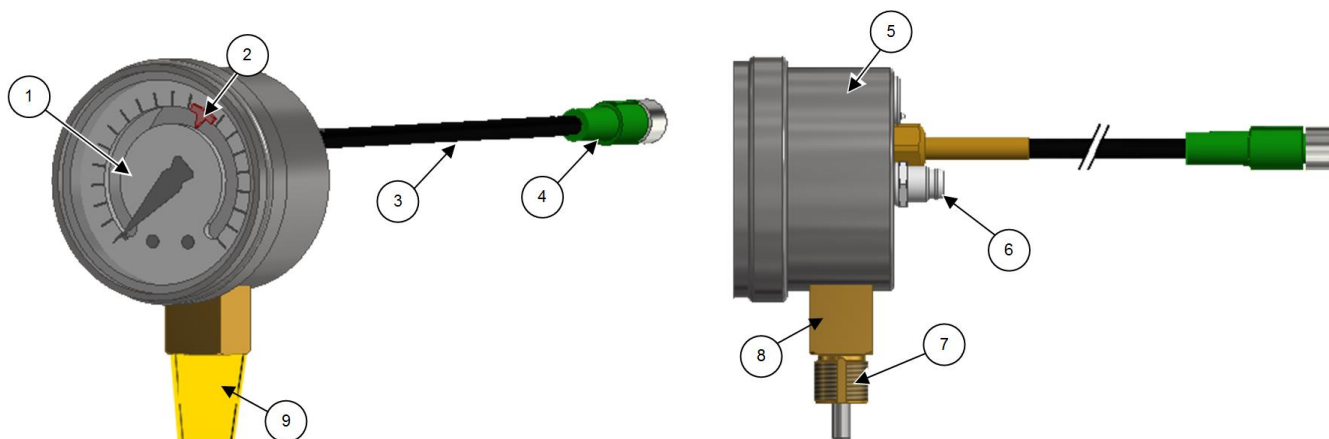
The built-in switch is electrically connected to the extinguishing control panel (ECP).

The pressure gauge contact is open when the pressure is equal to the nominal pressure of the cylinder. The contact closes when the pressure falls below the switchover point.

The contact pressure gauge is designed to be mounted on vibration-free units.

The contact pressure gauge is designed to be fitted and removed safely when the cylinder is pressurized.

## Type summary



Item	Description	Item	Description
1	Dial	6	Male M8 connector, 3 poles
2	Threshold marker	7	M12 x 1 connector for F230 cylinder valve
3	Connection cable	8	Tightening nut for an open-end wrench
4	Female M8 connector, 3 poles	9	End cap for M12 x 1 connector
5	Pressure gauge unit	-	-

## Product documentation

Type	Title	Document ref.
Mounting , Maintenance	Mounting and maintenance instructions MANOF230, MANOEOL	A6V11281595

## Safety

This product may only be installed by Siemens-authorized specialized installers, with experience in the design, installation and maintenance of automatic extinguishing systems. During installation, it must be ensured that:

- this product is installed in compliance with the accident prevention regulations and national regulations in force,
- this product is used as intended,
- any danger is avoided,
- Siemens requirements are met (assembly instructions, technical instructions, commissioning, and operating instructions),
- the operators have received and understood the information related to this product.

At commissioning, ensure compliance with the legislation in force, technical regulations and safety instructions.

Failure to comply with Siemens' instructions may result in serious bodily injury or significant property damage, for which Siemens cannot be held liable.

Siemens reserves the right to make technical modifications and/or improvements at any time.

## Mounting



Refer to the mounting and maintenance instructions to obtain the detailed procedure.



### **⚠ WARNING**

#### **Fragile precision instrument, handle with care**

Never use the unit to screw the pressure gauge on.

Always use the tightening nut under the unit and a 14 mm open-end wrench to screw the pressure gauge on.

Replace any pressure gauge after an impact, e.g. if dropped.

## Maintenance

### Storage

- Store in its original packaging, protected from shocks.
- Keep in a dry, dust-free location.

### Inspection



The frequency of the product inspection is subject to applicable local regulations. For more information, refer to the maintenance documentation.

- Check the good condition of the product.
- Check that all fittings have been properly tightened, using a 14 mm open-end wrench. Re-tighten using the wrench if necessary.
- Clean the pressure gauge glass with a lint-free cloth.

### Dissassembling the pressure gauge

The contact pressure gauge is designed to be fitted and removed safely when the cylinder is pressurized.



#### **WARNING**

A small "plopp" noise is heard when removing the pressure gauge attached to a pressurized cylinder

Remove the manometer carefully.



Refer to the mounting and maintenance instructions to obtain the detailed procedure.

## Technical data

### MANOF230-180

Technical information	
Nominal dimension	50 mm
Nominal pressure	200 bar
Measurement range	0 to 315 bar
Switchover point	The contact closes when the pressure drops below 180 ±6.5 bar
Accuracy class	1.6
Switching voltage	4.5 – 24 VDC/VAC
Switching current	5 – 100 mA
Contact load	max 2.4 W
Thread	M12x1 for F230 cylinder valve
Tightening connector	Open-end wrench, 14 mm
Ingress protection	IP65 (when "mounted on the cylinder valve")
Gaseous agent	IG-01, IG-55, IG-100, IG-541
Connection cable	Female M8 connector, 3 poles Length: 0.80 m
Connector at the back of the pressure gauge	Male M8 connector, 3 poles
Materials	Stainless steel, brass, aluminium, plastic, polycarbonate
Operating temperature	-20 °C to +50 °C, non-condensing
Transport and storage temperature	-40 °C to +70 °C, non-condensing
Weight	0.15 kg

Marking / OEM type	
	(Wika) PGS21.050

## MANOF230-270

Technical information	
Nominal dimension	50 mm
Nominal pressure	300 bar
Measurement range	0 to 400 bar
Switchover point	The contact closes when the pressure drops below 270 ±9.0 bar
Accuracy class	1.6
Switching voltage	4.5 – 24 VDC/VAC
Switching current	5 – 100 mA
Contact load	max 2.4 W
Thread	M12x1 for F230 cylinder valve
Tightening connector	Open-end wrench, 14 mm
Ingress protection	IP65 (when "mounted on the cylinder valve")
Gaseous agent	IG-01, IG-55, IG-100, IG-541
Connection cable	Female M8 connector, 3 poles Length: 0.80 m
Connector at the back of the pressure gauge	Male M8 connector, 3 poles
Materials	Stainless steel, brass, aluminium, plastic, polycarbonate
Operating temperature	-20 °C to +50 °C, non-condensing
Transport and storage temperature	-40 °C to +70 °C, non-condensing
Weight	0.15 kg

Marking / OEM type	
	(Wika) PGS21.050

Certifications and compliances	
VdS	G309005
RoHS	Compliant

<b>CE</b>	
305/2011/EU (CPR) EN 12094-10	0786-CPR-30095
The declared performance and conformity can be seen in the Declaration of Performance (DoP) and/or the EU Declaration of Conformity (DoC), which are obtainable via the Customer Support Center: Tel. +49 89 9221-8000 or <a href="https://siemens.com/bt/download">https://siemens.com/bt/download</a> .	

## Dimensions

Dimensions in mm

