

PART NUMBER : 12-A-1085-01

REASON FOR USE : CUSTOMER SERVICE

MATERIAL : 8.5 X 11 PAPER

TYPE STYLE : PER ARTWORK SUPPLIED

PRINTING : BLACK INK ON WHITE STOCK

NOTES : SHEET 2 IS ARTWORK OF INSTRUCTIONS

ARTWORK MAINTAINED BY DIVISION ENGINEERING.
 ANY ISSUES REGARDING ARTWORK OR VENDOR
 APPROVAL MUST BE DIRECTED TO DIVISION ENGINEERING.

Revisions:
 0:~406P 8-29-03



Tolerances: .XX ± .030 .XXX ± .015 Angular ± 2° Units are in inches.	Confidential - property of Siemens Energy & Automation, Inc. Distribution Products Division	AUXILIARY NEUTRAL LUG KIT INSTR. P2 PANELBOARDS				Dwg No 12-A-1085-01	Rev 0
		Dwn: MJT	8-18-03	Chk: RR	8-27-03	Apvd: JJ	8-29-03

SIEMENS

P2 Panelboard Kit BNK2 For Mounting an Auxiliary Branch Neutral Lug

Installation Instructions

The following instructions are for installation of a 3-tier branch neutral lug in the place of an existing 2-tier branch neutral lug in a Type P2 panelboard. The parts provided in this kit mount a 3-tier lug in any P2 panelboard neutral, except in a panelboard with a 125A main breaker. Those panels have insufficient space to fit the lug within the terminal compartment.



1. Lock off power supplying this equipment before working on it.

2. Remove the panelboard front cover and dead front.

3. Figure 1 shows two typical neutral branch lug arrangements for reference. Other arrangements are possible. Identify the 2-tier branch neutral lug to be replaced.

THIS KIT CONTAINS THE FOLLOWING ITEMS

ITEM NO.	DESCRIPTION	QTY.
1	3-Tier Branch Neutral Lug	1
2	10-24 X 1/2" Self Threading Screw	2

4. Remove all branch neutral wires terminated at the existing lug. Remove any lug mounted on the upper surface of the 2-tier lug. Note the locations of the two screws that fasten the existing lug to the neutral. The new lug will use the same fastening sites. Remove the two screws fastening the existing lug to the neutral and remove the lug from the panelboard.

5. Place the new 3-tier lug in the place of the removed lug. Fasten the new lug to the neutral bus with two 10-24 X 1/2" screws (item 2), using the same holes in the neutral bus as the removed lug. Tighten the screws to the torque value specified on the back of the dead front.

6. Replace any lug that was mounted on the upper surface of the removed lug, positioning it the same way on the new lug. Re-terminate all neutral branch wires that were disconnected from the removed lug.

7. Tighten all hardware to the values specified on the back of the dead front.

8. Replace the dead front and the panelboard front cover, using the hardware removed during disassembly.

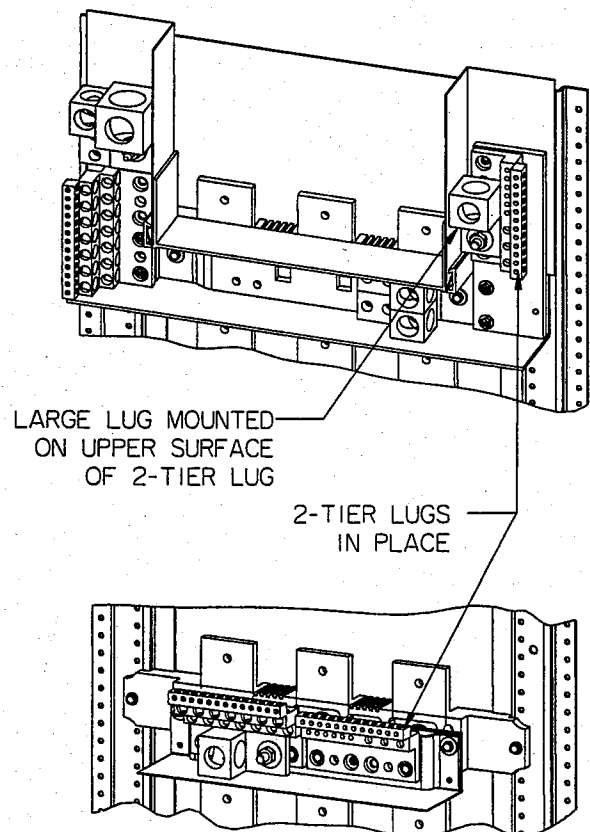


Figure 1