

**Content**

**1 Device - Revision Record - What is new? ..... 1**

1.1 Hardware ..... 1

1.2 Software ..... 1

1.3 Firmware ..... 1

**2 DTM - Device Type Manager ..... 1**

2.1 Supported devices ..... 1

2.2 DTM bundle Version record - What is new? ..... 1

**3 Requirements ..... 2**

3.1.1 PC-Hardware, Operating system ..... 2

3.1.2 Frame application / compatibility ..... 2

3.1.3 DTM400 Software package content: ..... 2

**4 Installation and configuration ..... 2**

4.1.1 Installation ..... 2

4.1.2 Uninstall instructions ..... 2

4.2 Update- / Upgrade instructions ..... 3

4.3 Known problems and limitations ..... 3

4.4 Getting help / further information ..... 4

4.5 How to get the latest info & software? ..... 4

4.6 Licensing the DTM ..... 4

\*) The individual device driver Supplement Info & Software is available on the data medium or latest in [www.abb.com/fieldbus](http://www.abb.com/fieldbus):  
 → latest information [*Field device protocol dependent*]  
 → latest info (download) [*device type dependent*]  
 - Driver description  
 - Software [*driver type dependent*]

**1 Device - Revision Record - What is new?**

**1.1 Hardware**

See the respective device driver Supplement-Info\*)

**1.2 Software**

See the respective device driver Supplement-Info\*)

**1.3 Firmware**

See the respective device driver Supplement-Info\*)

**2 DTM - Device Type Manager**

**2.1 Supported devices**

“ABB DTM400” is the name of an ABB DTM Bundle for HART, PROFIBUS, FOUNDATION Fieldbus and MODBUS field devices. The following supplementary information refers to all DTMs / DMAs of this package.

The number and type of the DTMs in this package are shown chapter 3.1.3.

**2.2 DTM bundle Version record - What is new?**

Released bundle Version	Released Date	Released DTM400 Library Version	Remarks
--	Dec. 2005	2.00.36 Patch 5	New hints in chapter 4.3
--	May 2008	2.00.36 Patch 10	- Bug fix - Updated device DTM's - New device DTM's
02.00.01	Jan 2009	2.00.36 Patch 10	First release of the DTM400 bundle setup
02.01.00	May 2009	2.00.36 Patch 10	Updated device DTM's - FSM4000-HART - Contrac-DPV1
02.01.01	Sep. 2009	2.00.36 Patch 11	New features - Import functionality Updated device DTM's - MV2600-PA - TO2600-PA
02.01.02	Oct. 2009	2.00.36 Patch 11	- Setup Bug fix
02.02.00	Nov. 2009	2.00.36 Patch 11	Deleted device DTM's (now part of the DTM500 Bundle) - HI2600 (264xx) HART - TTX300 HART - TZIDC HART
02.03.00	Jun. 2010	2.00.36 Patch 11	- Setup Bug fix - Updated device DTM's - SA2600-HART
02.04.00	Jun. 2011	2.00.36 Patch 11	Deleted device DTM's (now part of the DTM500 Bundle) - TTX200 HART
02.05.00	Aug. 2011	2.00.36 Patch 11	- Setup Bug fix - Updated device DTM's - DTM ST2600-HART (261)
02.06.00	July 2014	2.00.36 Patch 11	- Rearrange bundle - Updated bundle content

### 3 Requirements

#### 3.1.1 PC-Hardware, Operating system

Minimum requirement

- Intel Pentium III Processor 450 MHz or compatible
- 256 MB RAM memory
- 300 MB free hard disk space  
1024 x 768 screen resolution
- Windows 7 / 32 Bit
- Internet Explorer 6.0
- Adobe Reader latest version
- Member of the "Administrators" group

The ABB DTMs of the DTM400 Bundle are released for Windows 7 Enterprise as PC / Notebook installation.

ABB recommends that a virus scanner is used on all PCs/Notebooks, where Asset Vision and/or DTMs are installed.

McAfee VirusScan® Enterprise has been tested and qualified for this purpose.

#### 3.1.2 Frame application / compatibility

See the respective device driver Supplement-Info\*

#### 3.1.3 DTM400 Software package content:

1\*=Bundle(13), 2\*=Single ZIP(13), 3\*=Classic(3)

#### DTM for HART devices:

for electrical actuators

- DTMCNTRAC-HART for CNTRAC family 1\*

for flow transmitter

- DTMFAM5400-HART for FAM5400(AM54) 1\*
- DTMFCM2000-HART for FCM2000(CoriolisMaster) 2\*
- DTMFMT500-HART for FMT500-IG(Sensyflow iG) 1\*
- DTMFSM4000-HART for FSM4000 2\*
- DTMFVS4000-HART for FV4000, FS4000(TRIO WIRL) 1\*
- DTMFXE4000-HART for FXE4000(COPA-XE/MAG-XE) 3\*

for pressure and level transmitters

- DTM600T-HART for 600T(61xx, 62xx) 3\*
- DTMST2600-HART for 2600T(261xx) 2\*
- DTMTO2600-HART for 2600T(265xx), 2010Tx, 2020Tx 2\*
- DTMVM2600-HART for 2600T(267xx, 269xx), MV2010TC 2\*
- DTMSA2600-HART for 2600T(268xx) 2\*
- DTM364-HART for 2600T(364xx) 2\*

for temperature transmitters

- DTMTHX02-HART for TH02, TH102, TH202 1\*

#### DTM for PROFIBUS devices:

for electrical actuators

- DTMCNTRAC-DPV1 for CNTRAC DP-V1 family 2\*  
PNO-ID: 0x09EC

for analyzers

- DTMTB82EC-PA for TB82EC23xx 1\* PNO-ID: 0x5102
- DTMTB82TC-PA for TB82TC23xx 1\* PNO-ID: 0x5104
- DTMTB82TE-PA for TB82TE23xx 1\* PNO-ID: 0x5103
- DTMTB82PH-PA for TB82PH23xx 1\* PNO-ID: 0x5101

for flowmeters

- DTMFCM2000-PA for FCM2000(CoriolisMaster) 2\*  
PNO-ID: 0x0849
- DTMFMT500-DP for FMT500-IG(Sensyflow iG) 1\*  
PNO-ID: 0x05CA
- DTMFSM4000-PA for FSM4000 1\* PNO-ID: 0x078C
- DTMFVS4000-PA for FV4000, FS4000(TRIO WIRL) 1\*  
PNO-ID: 0x05DC

- DTMFXE4000-PA for FXE4000(COPA-XE/MAG-XE) 3\*  
PNO-ID: 0x0691

for pressure and level transmitters

- DTMHI2600-PA for 2600T(264xx) 2\* PNO-ID: 0x052B
- DTMTO2600-PA for 2600T(265xx), 2010Tx, 2020Tx 2\*  
PNO-ID: 0x04c2
- DTMVM2600-PA for 2600T(267xx, 269xx), MV2010TC 2\*  
PNO-ID: 0x062D

for positioners

- DTMZIDC-PA for TZIDC-110, TZIDC-210 2\*  
PNO-ID: 0x0639

for temperature transmitters

- DTMTFX12-PA for TF12, TF212 1\* PNO-ID: 0x04c4

#### DTM for MODBUS devices:

for pressure and level transmitters

- DTMVM2600-MODBUS<sup>1,2</sup> for 2600T(267xx, 269xx), MV2010TC

#### DMA for FOUNDATION Fieldbus devices:

for pressure and level transmitters

- DMAMV2600-H1<sup>1,2</sup> for 2600T(267xx, 269xx), MV2010TC

<sup>1</sup>) Available only on the „DTM400 & DSV401 (SMART VISION)“ CD-ROM [Documentation-ID: 08/FB-01 XA].

<sup>2</sup>) Available only in [www.abb.com/fieldbus](http://www.abb.com/fieldbus):

→ latest information [*Field device protocol dependent*]

→ latest info (download) [*device type dependent*]

- Software [*driver type*]

## 4 Installation and configuration

### 4.1.1 Installation

- Make sure that the minimum hardware requirements are met.
- Start Windows (login with administrator rights!).
- Cancel all running programs.
- Insert data medium or unpack the DTM zip file available as download from [www.abb.com/Instrumentation](http://www.abb.com/Instrumentation).

- \*for WIN7 – if exist, close Microsoft Lync 2013

- Start the installation Wizard as follows:

Data medium <drive>\Setup.exe

or

DTM zip file \Revxx.yy.zz\_yyyy.mm\Setup.exe

- Follow the instructions.

### 4.1.2 Uninstall instructions

- For individual DTM un-installation see the respective device driver Supplement-Info\*)

- For Bundle un-installing start in the operating system:

Start -> Settings -> Control Panel -> Software -> Install/Uninstall

1. First un-install ALL DTMs/DMA's.

(but **NOT** "DTM Library Patch", "ABB DTM LIBRARY", "ABB DTM500" and "ABB DTM Contrac-LCI...")

That are the DTMs starting with:

600T, ABB Engineer IT DTM\*, Engineer IT DTM\*, ABB Engineer IT DMA\*, ABB DTM\* and DTM\*.

2. Finally un-install first "DTM Library Patch" and then "ABB DTM LIBRARY".

3. Reboot your computer!

## 4.2 Update- / Upgrade instructions

See the respective device driver Supplement-Info\*)

## 4.3 Known problems and limitations

In addition to the specific hints in the respective field device 3K\*R3901\_Supplement-Info-Driver\*.pdf the general hints are attached.

Valid for FDT frame applications only:

- TAG cannot be set via a DTM.  
In DSV401 Rx (SMART VISION) this limit does not apply.
- DTM cannot switch to Offline mode if working with Online Application.  
Device has to be disconnected first and then the DTM can be switched to Offline mode only.  
In DSV401 Rx (SMART VISION) this limit does not apply.
- It could happen that the list of available functions for a DTM in the frame application does not get updated. If that happens, click on "New project" in the frame and when prompted to save click on "Cancel".  
The DTM menu with all functions in the frame will be available again.  
In DSV401 Rx (SMART VISION) this limit does not apply.
- The individual ABB DTM400 Bundle DTMs must be closed before the FDT frame application.  
In DSV401 Rx (SMART VISION) this limit does not apply.
- The individual ABB DTM400 Bundle DTMs must be closed before the ABB DTM400 DTM could be disconnected (Offline) in the project tree of the FDT frame application.  
In DSV401 Rx (SMART VISION) this limit does not apply.
- It is only possible to use „Save as...“ and „Open“ (parameter data Export / Import) in the individual ABB DTM400 Bundle DTMs via an FDT frame application.

### Workaround for Windows XP:

1. Start "Export" of Parameter data
    - + Open DTM400 DTM via the Frame Tool
    - + Change Parameter inside the DTM400 DTM by upload from the device or manual input
    - + 1. Click "Save" in the Menu / Icon bar of the DTM400 DTMs
    - 2. Click "Save" afterwards also in the Menu / Icon bar of the Frame Tool.
    - + Click on the DTM400 DTM node in the Frame Tool project tree.  
Right mouse click ->Additional functions ->Export  
Stored the parameter data on your medium.
  2. Start "Import" of Parameter data
    - + Open DTM400 DTM via the Frame Tool
    - + Click on the DTM400 DTM node in the Frame Tool project tree.  
Right mouse click ->Additional functions ->Import  
! No other way starts the "Import" functionality !
    - + Download of the imported Parameter into a device is now possible
    - + If you want to store the imported Parameter afterwards also in the Instance Data (Project) go ahead as following:
      - Click "Save" also in the Menu / Icon bar of the Frame Tool.
- In DSV401 Rx (SMART VISION) this limit does not apply.

### Workaround 1 for Windows 7 32/64Bit:

#### 1. Export preparation "Prototype record"

Open frame application in expert mode

1. Create a project with  
Comm DTM  
device DTM

2. Move the cursor to line device DTM  
right mouse button to build connection

**Note:** Only online can be stored the right data format

3. Double- click device DTM

opening device DTM Software

4. change to the device DTM window

Entry/change your values

**Note:** Description remains unaffected

5. Click file / save - quick response with rotating circle (windows)

#### 2. Export

1. Change to frame application

Click file / save with project name (==> name.fdt file) In the DTM disconnect/close the DTM.

Move the cursor to line device DTM

2. Click right mouse button

select Import/Export > Export > save with file name (==> Name.xml file is saved) disconnect DTM

3. Close frame application and save project

#### 3. Import

1. Creating a new project

CommDTM Add

cursor position on CommDTM

2. Click right mouse button

Selection function Import/Export> Import (==> name.xml file)

- Quick response with rotating circle (Windows)

**Note:** Sometimes the small file selection window disappears behind the frame application and you would think the program stops. Then (" bring it to front") looking down on the taskbar icon and open it

Select file name - device DTM is added

3. Move the cursor to line device DTM

right mouse button to build connection (without loading data from device)

Double- click device DTM

opening device DTM software

4. change to the device DTM window

Check the Imported values

#### 4. Save new device

1. download data to device

2. finished

In DSV401 Rx (SMART VISION) this limit does not apply.

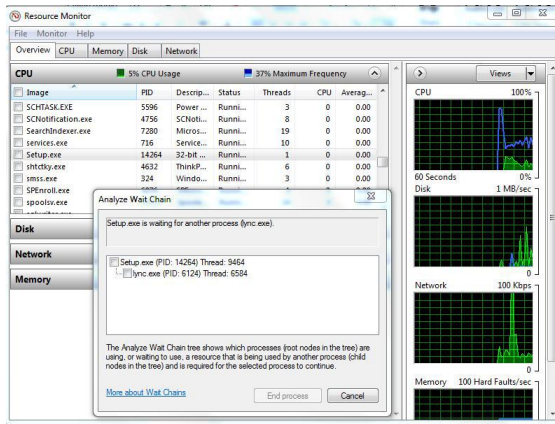
### Workaround 2 for Windows 7 64Bit:

**Case:** DTM400 Bundle Installer stops

- In certain Win 7 64 bit OS installation, the DTM400 setup does not continue to install, though observed as an active process in the task manager. Further, no installation of DTM400 drivers possible.

#### Workaround:

- In Win 7 64 bit OS and above,
  - a) Start -> Resmon.exe (in search programs and file)
  - b) From Overview tab, select the process "setup.exe".
  - c) Right click and select "Analyze wait chain..." from the context menu. It will list one or more process that are to be completed so as to continue with DTM400 "setup.exe"
- (see image below)



- d) Terminate the processes that are listed. In order to ensure that it does not impact any other critical operations, initiate the DTM400 setup on restart of the system.
- e) Immediately after all the blocking process are terminated, the DTM400 setup continues without issues.

**Case:** PROFIBUS devices with address 126 are not possible to configure with the driver of the DTM400 Bundle.

**Workaround:**

- + Change the PROFIBUS address to a not in use address < 126.
- + Start the device configuration again.
- Individual DTMs available with the ABB DTM400 bundle might not fully support the ABB Asset Vision Basic (DAT200) Point-to-Point Wizard. Error messages might come up (e.g. "Failed to open ActiveX Control of ...") or the DTM's Parameter window is not opened at the end of the wizard execution.  
Please preferably use the ABB Asset Vision Basic (DAT200) Expert Mode with DTM400 DTMs.

#### 4.4 Getting help / further information

See the respective device driver Supplement-Info\*)

#### 4.5 How to get the latest info & software?

- The latest DTM400 Bundle Supplement Info is available on [www.abb.com/fieldbus](http://www.abb.com/fieldbus):  
Enter here in the search field following No. "3KXD801400R3901".

The latest DTM400 Bundle software is available on

[www.abb.com/fieldbus](http://www.abb.com/fieldbus):

Enter here in the search field following No. "3KXD800400S0030".

- For the single device driver see the respective Supplement Info & Software\*)

#### 4.6 Licensing the DTM

- The ABB DTM400 Bundle is usable without any license in any frame application.
- After the installation the ABB DTM400 Bundle runs 90-days in demo mode (full functionality) and needs to be purchased within this period, when the storage of data being requested.
- By purchasing the DSV401 (SMART VISION) single PC license the ABB DTM400 Bundle is also operable without restriction and does not have to be ordered separately!

**ABB provides expert and comprehensive consulting services in more than 100 countries worldwide.**

<http://www.abb.com/instrumentation>

ABB is continually improving its products. As a result, technical information in this document is subject to change.

Printed in the Fed. Rep. of Germany (02.2016)

© ABB 2016



**Germany**

**ABB Automation Products GmbH**  
Borsigstr. 2  
63755 Alzenau

Tel: +49 (0)180-5222580  
Fax: +49 (0) 621-381-933129031  
[vertrieb.instrumentation@de.abb.com](mailto:vertrieb.instrumentation@de.abb.com)

**USA**

**ABB Inc.**  
125 E. County Line Road  
Warminster, PA  
18974-4995

Tel: +1 (0)215 674 6000  
Fax: +1 (0)215 674 7183  
[instrumentation@us.abb.com](mailto:instrumentation@us.abb.com)

**Italy**

**ABB S.p.A.**  
Via Statale 113  
22016 Lenno (CO)

Tel: +39 0344 58111  
Fax: +39 0344 56278  
[abb.instrumentation@it.abb.com](mailto:abb.instrumentation@it.abb.com)

**UK**

**ABB Limited**  
Oldends Lane  
Stonehouse  
Gloucestershire GL10 3TA

Tel: +44 (0)1453 826 661  
Fax: +44 (0)1453 829 671  
[instrumentation@gb.abb.com](mailto:instrumentation@gb.abb.com)

**P.R. China**

**ABB Engineering (Shanghai) Ltd.**  
32 Industrial Area  
Kangqiao Town, Nanhui District  
Shanghai, 201319

Tel: +86 (0) 21 6105 6666  
Fax: +86 (0) 21 6105 6677  
[china.instrumentation@cn.abb.com](mailto:china.instrumentation@cn.abb.com)