

QUICK REFERENCE GUIDE

Compression connectors and accessories



- Aluminum cable lugs
- Copper cable lugs
- Mechanical connectors
- Grounding system - Compression connectors
- Tools and dies





Table of contents

Aluminum cable lugs	4
Copper cable lugs	5
Mechanical connectors	7
Grounding system - Compression connectors	9
Tools and dies	16

Aluminum cable lugs



						Tools			
				TBM6PCR-LI TBM6UNICR-LI TBM62PCR-LI TBM62C-LI	TBM5 TBM5S	TBM6, TBM6S Two dies are needed, upper and lower	TBM8 TBM8S	TBM14M TBM14MC TBM14CR-LI *TBM15I *TBM15CR-LI	
Code cable Al	Bolt size (in.)	One-hole - long barrel	Two-holes - long barrel			Dies			Colour code
8 AWG	1/4	60102-TB	—	6TON24SS		13475/13477		15522SS	Blue
6 AWG	1/4	60107-TB	—	6TON29SS	13454	13472/13476	13461	15527SS	Grey
4 AWG	1/4	60112-TB	—	6TON37SS	13455	13474/13477	13462	15513SS	Green
	5/16	60113-TB	—						
2 AWG	3/8	60114-TB	—	6TON42SS	13455	13475/13477	13462	15508SS	Pink
	1/4	60116-TB	—						
	5/16	60117-TB	—						
1 AWG	3/8	60124	—	6TON45SS		13474/13477		15526SS	Gold
	5/16	60129	—	6TON50SS	13457	13474/13477	13464	15530SS	Tan
1/0 AWG	3/8	60130	60230						
2/0 AWG	1/2	60132	—	6TON54SS	13457	13475/13477	13464	15511SS	Olive
	3/8	60136	—						
3/0 AWG	1/2	60138	60238	6TON60SS	13458	13473/13476	13465	15532SS	Ruby
	3/8	60142	60242						
4/0 AWG	1/2	60144	60244	6TON66SS	13458	13473/13476	13465	15534SS	White
	3/8	60148	60248						
250 kcmil	1/2	60150	60250	6TON71SS	13458	13473/13476	13465	15534SS	White
	3/8	—	60254						
300 kcmil	1/2	60156	60256	6TON76SS	13458	13472/13476	13466	15514SS	Red
	3/8	60160	60260						
350 kcmil	1/2	60162	60262	6TON87SS	13458	13478/13478	13468	15506SS	Brown
	3/8	—	60265						
400 kcmil	1/2	60165	60267	6TON94SS	13458	13478/13478	13468	15506SS	Brown
	3/8	—	60268						
500 kcmil	1/2	60171	60271	6TON94SS	13458	13478/13478	13468	15505SS	Pink
	5/8	60172	60273						
600 kcmil	1/2	—	60274	6TON94SS	13458	13478/13478	13468	15515SS	Black
	3/8	—	60275						
750 kcmil	1/2	—	60278	6TON94SS	13458	13478/13478	13468	15504SS	Yellow
	1/2	—	—						
	5/8	60178	—						

* Always use the 15500-TB adapter with the TBM15CRLI tool.




Copper cable lugs



					Tools				
					TBM5 TBM5S	TBM6,TBM6S Two dies are needed, upper and lower	TBM8 TBM8S	TBM6PCR-LI TBM6UNICR-LI TBM62PCR-LI TBM62CR-LI	TBM14M TBM14MC TBM14CR-LI *TBM15CR-LI *TBM15I
Code Copper	Bolt size (in.)	One-hole	Two-holes	One-hole - long barrel	Dies			Colour code	
8 AWG	#10	54104	54204	54929BE	13475/13477	13461	6TON21SS	15520SS	Red 21
	1/4	54130	542040410	54930BE					
	5/16	54131	—	54930BE05					
	3/8	54132	256-30695-251	54930BE06					
	1/2	—	—	—					
6 AWG	#10	54134	256-30695-1183	54904BE	13454	13461	6TON24SS	15522SS	Blue 24
	1/4	54105	54205	54905BE					
	5/16	54135	—	54905BE05					
	3/8	54136	256-30695-253	54905BE06					
	1/2	256-30695-422	—	—					
4 AWG	#10	54138	—	54908BE	13472/13476	13462	6TON29SS	15527SS	Grey 29
	1/4	54106	54206	54906BE					
	5/16	54139	256-30695-1184	—					
	3/8	54140	256-30695-255	—					
	1/2	256-30695-264	—	—					
2 AWG	1/4	54107	54207	54910BE04	13474/13477	13462	6TON33SS	15528SS	Brown 33
	5/16	54142TB	—	54910BE05					
	3/8	54143TB	256-30695-257	54910BE					
	1/2	54145TB	256-30695-1049	54915BE					
	1/4	54108	256-30695-329	54947BE04					
1 AWG	5/16	54147	54255	54947BE	13475/13477	13463	6TON37SS	15513SS	Green 37
	3/8	54148	256-30695-1236	54947BE06					
	1/2	54150	—	54947BE08					
	1/4	54152-TB	—	—					
	5/16	54153TB	54255	54949BE					
1/0 AWG	3/8	54109	54209	54909BE	13475/13477	13462	6TON42SS	15508SS	Pink 42
	1/2	54155TB	256-30695-886	54950BE					
	5/16	54158	—	—					
	3/8	54110	54210	54910BE					
	1/2	54160	54260	54951BE					
2/0 AWG	5/16	54163-TB	—	—	13474/13477	13468	6TON45SS	15526SS	Black 45
	3/8	54111	54211	54965BE06					
	1/2	54165TB	54265	54965BE					
	5/16	54168	—	—					
	3/8	54112	54212	54970BE06					
3/0 AWG	1/2	54170	54270	256-30695-1253	13475/13477	13463	6TON54SS	15511SS	Purple 54
	3/8	54174	54213	—					
	1/2	54113	54275	54913BE					
	1/2	54114	54280	54914BE					
	5/8	54181	54280-1028	—					
250 kcmil	1/2	54115	54282	54915BE	13473/13476	13465	6TON62SS	15510SS	Yellow 62
	5/8	54183	54282-1028	—					
	1/2	54116	54283-0828	54916BE					
	5/8	54185	54283-1028	54917BE					
	1/2	54118	54286	54918BE					
300 kcmil	5/8	54187	54286-1028	54919BE	13472/13476	13467	6TON66SS	15534SS	White 66H
	1/2	—	54289	54921BE					
	5/8	54120	54289-1028	54920BE					
	1/2	—	54223	54922BE					
	5/8	54123TB	54223-1028	54923BE					
350 kcmil	1/2	—	54224	—	13468/13468	13468	6TON71SS	15514SS	Red 71H
	5/8	54124-TB	54224-1028	—					
	1/2	—	54226	—					
	5/8	54125	54226-1028	54926BE					
	1/2	—	54228	—					
400 kcmil	5/8	54126	54226-1028	54926BE	13468/13468	13468	6TON76SS	15512SS	Blue 76H
	1/2	—	54228	—					
	5/8	54128	256-30695-844	54928BE					
	1/2	—	54228	—					
	5/8	54128	256-30695-844	54928BE					
500 kcmil	1/2	—	54228	—	13468/13468	13468	6TON87SS	15506SS	Brown 87H
	5/8	—	54289	54921BE					
	1/2	—	54289	54921BE					
	5/8	54120	54289-1028	54920BE					
	1/2	—	54223	54922BE					
600 kcmil	5/8	54122-TB	—	—	13468/13468	13468	6TON94SS	15536SS	Green 94H
	1/2	—	54223	54922BE					
	5/8	54123TB	54223-1028	54923BE					
	1/2	—	54224	—					
	5/8	54124-TB	54224-1028	—					
700 kcmil	1/2	—	54224	—	13468/13468	13468	6TON99SS	15505SS	Pink 99H
	5/8	54124-TB	54224-1028	—					
	1/2	—	54226	—					
	5/8	54126	54226-1028	54926BE					
	1/2	—	54228	—					
750 kcmil	5/8	54126	54226-1028	54926BE	13468/13468	13468	6TON106SS	15504SS	Black 106H
	1/2	—	54228	—					
	5/8	54128	256-30695-844	54928BE					
	1/2	—	54228	—					
	5/8	54128	256-30695-844	54928BE					
800 kcmil	1/2	—	54228	—	13468/13468	13468	6TON107SS	15504SS	Red 107H
	5/8	—	54228	—					
	1/2	—	54228	—					
	5/8	—	54228	—					
	1/2	—	54228	—					
900 kcmil	5/8	—	54228	—	13468/13468	13468	6TON115SS	15504SS	Yellow 115H
	1/2	—	54228	—					
	5/8	—	54228	—					
	1/2	—	54228	—					
	5/8	—	54228	—					
1000 kcmil	1/2	—	54228	—	13468/13468	13468	6TON125H	15504SS	125H
	5/8	—	54228	—					
	1/2	—	54228	—					
	5/8	—	54228	—					
	1/2	—	54228	—					

* Always use the 15500-TB adapter with the TBM15CRLI tool.

Compression lugs and splices for copper cables

		Lugs	Compression splices		Tools			
					TBM6PCR-LI TBM6UNICR-LI TBM62PCR-LI TBM62CR-LI	TBM14M TBM14MC TBM14CR-LI *TBM15CR-LI *TBM15I		
Code Copper	Bolt size (in.)	Two-holes - long barrel	Standard	Long	Thick-walled heat shrink tubing of HS type	Dies		Colour code
8 AWG	#10	—	54504	54804	HS16-12	6TON21SS	15520SS	Red 21
	1/4	54851BE						
	5/16	—						
	3/8	256-30695-1157						
6 AWG	1/2	—	54505	54805	HS12-6	6TON24SS	15522SS	Blue 24
	#10	—						
	1/4	54852BE						
	5/16	—						
4 AWG	3/8	256-30695-1158	54506	54806	HS12-6L HS6-1	6TON29SS	15527SS	Grey 29
	1/2	256-30695-868						
	#10	—						
	1/4	54854BE						
2 AWG	5/16	—	54507	54807	HS6-1L HS6-1-4	6TON33SS	15528SS	Brown 33
	3/8	256-30695-733						
	1/2	54855BE						
	1/4	54856BE						
1 AWG	3/8	54810BE	54508	54808	HS4-30L HS4-30-4	6TON37SS	15513SS	Green 37
	1/2	54811BE						
	1/4	54812BE						
	5/16	54858BE						
1/0 AWG	3/8	256-30695-1161	54509	54809	HS4-400L HS4-400-4	6TON42SS	15508SS	Pink 42
	1/2	54857BE						
	5/16	54860BE						
	3/8	256-30695-1162						
2/0 AWG	1/2	256-30695-593	54510	54810	HS4-30L HS4-30-4	6TON45SS	15526SS	Black 45
	5/16	—						
	3/8	256-30695-1116						
	1/2	54862BE						
3/0 AWG	5/16	—	54511	54811	HS4-30L HS4-30-4	6TON50SS	15530SS	Orange 50
	3/8	54816BE						
	1/2	54864BE						
	5/16	—						
4/0 AWG	3/8	54818BE	54512	54812	HS4-30L HS4-30-4	6TON54SS	15511SS	Purple 54
	1/2	54866BE						
	3/8	—						
	1/2	54868BE						
250 kcmil	1/2	54870BE	54513	54813	HS4-30L HS4-30-4	6TON62SS	15510SS	Yellow 62
300 kcmil	5/8	—						
350 kcmil	1/2	54872BE						
400 kcmil	5/8	—						
500 kcmil	1/2	54874BE	54514	54814	HS4-30L HS4-30-4	6TON66SS	15534SS	White 66H
	5/8	—						
	1/2	54876BE						
	5/8	—						
600 kcmil	1/2	54878BE	54515	54815	HS4-30L HS4-30-4	6TON71SS	15514SS	Red 71H
	5/8	—						
	1/2	54874BE						
	5/8	—						
700 kcmil	1/2	54876BE	54516	54816	HS4-30L HS4-30-4	6TON76SS	15512SS	Blue 76H
	5/8	—						
	1/2	54878BE						
	5/8	—						
750 kcmil	1/2	54878BE	54518	54818	HS4-30L HS4-30-4	6TON87SS	15506SS	Brown 87H
	5/8	—						
	1/2	54879BE						
	5/8	—						
800 kcmil	1/2	54880BE	54520	54820	HS4-30L HS4-30-4	—	15536SS	Green 94H
	5/8	—						
	1/2	54879BE						
	5/8	—						
900 kcmil	1/2	54880BE	54522TB	—	HS4-30L HS4-30-4	—	15505SS	Pink 99H
	5/8	—						
	1/2	54882BE						
	5/8	—						
1000 kcmil	1/2	—	54523-TB	54823	HS4-30L HS4-30-4	—	15515SS	Black 106H
	5/8	—						
	1/2	—						
	5/8	—						
900 kcmil	1/2	58826BE	—	—	—	—	15504SS	Yellow 115H
	5/8	—						
	1/2	—						
	5/8	—						
1000 kcmil	1/2	54882BE	54528	54828	HS500-1000	—	15603	125H
	5/8	—						

* Always use the 15500-TB adapter with the TBM15CR-LI tool.

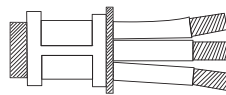
Mechanical connectors - Compression wire joints for copper conductors



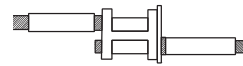
		Tools					
		TBM8 TBM8S	TBM5 TBM5S	TBM6 TBM6S			
Circular mil area		Dies		Upper	Lower	Colour code	Cat. no.
Min.	Max.						
19.59	27.29	13461	13454	13475	13477	Blue	54610
31.14	43.40			13472	13476	Grey	54615
49.53	65.56			13474	13477	Brown	54620
66.04	87.13	13462	13455	13474	13477	Green	54625-TB
83.48	99.99			13475	13477	Pink	54630
99.06	124.22			13474	13477	Black	54635
125.22	166.12			13474	13477	Orange	54640
166.96	193.63	13463	13456	13475	13477	Purple	54645-TB
189.19	244.02			13473	13476	Yellow	54650

AWG Size	Circular Mil Area
#14	4.107
#12	6.530
#10	10.380
#8	16.510
#6	26.250
#4	41.740
#3	52.633
#2	66.370
#1	83.690
#1/0	105.500
#2/0	133.100
#3/0	167.800
#4/0	211.600

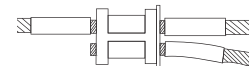
Types of installations



Pigtail



Two-way connector



Three-way connector

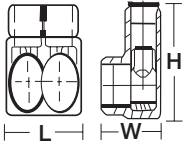
Mechanical connectors

Mechanical connectors for 600V 90°C - Certified by CSA - Type AMT



Wire range	No. of ports	Length (in.)	Width (in.)	Height (in.)	Bolt size	Cat. no.
6 Str. to 3/0 Str.	2	1.89	1.58	1.86	3/16	AMTS3062

Diagrams

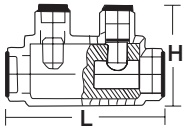


Mechanical connectors for 600V 90°C - Certified by CSA - Type AMT



Wire range	No. of ports	Length (in.)	Width (in.)	Height (in.)	Bolt size	Cat. no.
6 Str. to 250 Kcmil	1	3.96	1.19	2.17	5/16	AMTSR250

Diagram



PVC Insulated street and highway lighting mechanical connectors - BY Series



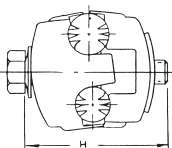
Wire range	No. of ports	Cat. no.
#14 AWG to 2/0 Str.	3	BY320

Mechanical insulation piercing connectors / copper-to-copper / copper-to-aluminum / aluminum-to-aluminum - Type IPC



Conductor range Al / Cu		Length (in.)	Width (in.)	Height (in.)	Voltage applications	Cat. no.
Main	Tap					
1/0 AWG to 8 AWG 50 to 6 Kcmil	2AWG to 8 AWG 35 to 6 Kcmil	1-17/32	2-9/16	2	600 V	IPC1102
350Kcmil to 4/0AWG 185 to 95 Kcmil	4/0AWG to 1/0 AWG 95 to 6 Kcmil	2-5/8	2-3/4	3	300 V	IPC3541

Diagram



Grounding system - Compression connectors

Compression ground tap connectors IEEE - Figure 6



Application		Manual hydraulic crimp Tool (TBM14M)	Hydraulic tools (13100A) *(TBM15I)	Battery tools (TBM14CR-LI) *(TBM15CR-LI)	Cat. no.
Main	Tap				
1/0 Str.- 250 kcmil to 1/2-5/8 in. rod	#4 Sol.- #2 Str.	Die #15G86A with (1) compression			54855
	1/0 Str. - 2/0 Str.				54860
	3/0 Str.- 250 kcmil				54865CK
#6 Sol.-#2 Str.	#6 Sol.-#2 Str.	Die #15501A with (1) compression			54875
250 kcmil – 500 kcmil to 5/8-3/4 in. rod	#4 Sol.-#2 Str.	Die #15G126R with (1) compression			54885
	1/0 Str.-2/0 Str.				54890
	3/0 Str.-250 kcmil				54895
	350 kcmil-500 kcmil				54900

* Always use the 15500-TB adapter with the TBM15CRLI tool.

* Always make a crimping connection using a grounding rod and the 15508 die with 14 and 15-ton tools

Compression ground rod tap connectors IEEE - Figure 8



*Ground rod (in.)	Cable range	Manual hydraulic crimp tool (TBM14M)	Hydraulic tools (13100A) *(TBM15I)	Battery tools (TBM14CR-LI) *(TBM15CR-LI)	Cat. no.			
1/2	2 AWG – 2/0 AWG	Die #15G121R with (2) compressions			GR12-202			
5/8					GR58-202			
3/4					GR34-202			
1	GR1-202							
1/2	3/0 AWG – 250 kcmil							GR12-40250
5/8								GR58-40250
3/4								GR34-40250
1								GR1-40250
5/8	300-500 kcmil							GR58-300500
3/4		GR34-300500						
1		GR1-300500*						

* Always use the 15500-TB adapter with the TBM15CRLI tool.

* Always make a crimping connection using a grounding rod and the 15508 die with 14 and 15-ton tools

Grid tap connectors IEEE - Type C

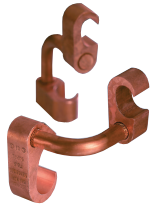


Application		Crimp tool (TBM14M)	Hydraulic tools (13100A) *(TBM15I)	Battery tools (TBM14CR-LI) *(TBM15CR-LI)	Cat. no.
Main	Tap				
#6 Sol.- #2 Str.	#6 Sol. - #2 Str.	Die #HBKC with (1) compression			CTP22
#1 Str.- 2/0 Str.	#6 Sol. - #2 Str.	Die #15501A with (1) compression			CTP202
#1 Str.- 2/0 Str.	#1 Str. - 2/0 Str.				CTP2020
3/0 Str. - 250 kcmil	#6 Sol. - 2/0 AWG	Die #15G86R with (1) compression			CTP25020
3/0 Str. - 250 kcmil	3/0 Str.- 250 kcmil				CTP250250
300 - 500 kcmil	#6 Sol. - 2/0 AWG	Die #15G121R with (2) compressions			CTP50020
300 - 500 kcmil	3/0 Str. - 250 kcmil				CTP500250
300 - 500 kcmil	300 - 500 kcmil	Die #15G121R with (3) compressions			CTP500500

* Always use the 15500-TB adapter with the TBM15CRLI tool.

Grounding system - Compression connectors

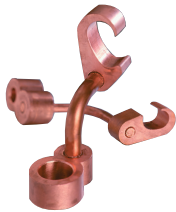
Compression grid and ground rod connectors IEEE - Figure 6



Cable to cable		Element A to ground rod (in.)	*Element B to rebar (in.)	Manual hydraulic tool : TBM14M , Hydraulic tools : 13100A , *TBM15I , Battery tools : TBM14CR-LI , *TBM15CR-LI		Cat. no.
Element A	Element B			Element A	Element B	
#6 Sol. - #2 Str.	#6 Sol. - #2 Str.	—	—	Die #15501A with (1) compression	Die #15501A with (1) compression	54855L
#1 Str. - 250 kcmil	#6 Sol. - #2 Str.	1/2 – 5/8	#3 rebar 3/8, thru 1/2 in. #4 rebar	Die #15501A with (1) compression	Die #15G86R with (1) compression	54865L
#2 Str. - 250 kcmil	#2 Str. - 250 kcmil			Die #15G86R with (1) compression		54875L
250 kcmil - 500 kcmil	#6 Sol. - #2 Str.	5/8 – 3/4	#5 rebar 5/8, thru 3/4 in. #6 rebar	Die #15501A with (1) compression	Die #15G126R with (1) compression	54885L
	#2 Str. - 250 kcmil			Die #15G86R with (1) compression		54895L
	250 kcmil - 500 kcmil			Die #15G121R with (3) compressions		Die #15G121R with (3) compressions

* Always use the 15500-TB adapter with the TBM15CR-LI tool.
* Always make a crimping connection using a grounding rod and the 15508 die with 14 and 15-ton tools

Compression ground rod to grid connectors IEEE - Figures 6 to 8



Ground rod in. (mm)	Cable range	Manual hydraulic tool : TBM14M Hydraulic tools : 13100A , *TBM15I Battery tools : TBM14CR-LI , * TBM15CR-LI		Cat. no.
		Element A	Element B	
1/2 (12.7)	2 AWG–250 kcmil	Die 15G121R with (2) compressions	Die 15G121R	54855LR12*
	250 kcmil–500 kcmil		Die 15G126R with (1) compression	54885LR12*
5/8 (16.0)	2 AWG–250 kcmil		Die 15G86R with (1) compression	54865LR58*
	250 kcmil–500 kcmil		Die 15G126R with (1) compression	54895LR58*
3/4 (19.1)	2 AWG–250 kcmil		Die 15G86R with (1) compression	54875LR34*
	250 kcmil–500 kcmil		Die 15G126R with (1) compression	54900LR34*
1 (25.4)	2 AWG–250 kcmil	Die 15G86R with (1) compression	54910LR100	
	250 kcmil–500 kcmil	Die 15G126R with (1) compression	54920LR100	

* Always use the 15500-TB adapter with the TBM15CR-LI tool.
* Always make a crimping connection using a grounding rod and the 15508 die with 14 and 15-ton tools

Structural Grounding Studs - Type TBGS



Ground rod in. (mm)	Cat. no.
1/2 (12.7)	54855LR12*
	54885LR12*
5/8 (16.0)	54865LR58*
	54895LR58*
3/4 (19.1)	54875LR34*
	54900LR34*
1 (25.4)	54910LR100
	54920LR100

Hex compression intimately bonds directly to copper-clad ground rod IEEE - Figure 8



Application		Manual hydraulic tool : TBM14M , Hydraulic tools : 13100A , TBM15I , Battery tools : TBM14CR-LI , TBM15CR-LI	
Cable range	Copper-coated grounding rod (in.)	Element A	Cat. no.
One cable: 3/0 to #6 Two cables: #2 to #6	2 AWG–250 kcmil	Die #15506SS with (2) compressions	GR58-406

* Always use the 15500-TB adapter with the TBM15CR-LI tool.

Grounding system - Compression connectors

Copper compression tap connectors - Type H



Application		Mechanical tool and dies (OD58)	Hydraulic tool and dies (JB12B)	Hydraulic tool and dies (TBM15)	Battery tool TBM15CR-LI	Cat. no.
Main A	Tap B					
ACSR : 4,6 AWG str. : 6 AWG	Sol. : 4,6,8 AWG str. : 8 AWG	BY49 , BY45, BY31	HBKT	HBKT	HBKT	CF44-1
ACSR: 2, 4 AWG str. : 4 AWG	Sol. : 2,4 AWG str. : 4 AWG	BY47	—			CF22-1
Str. : 1/0,1,2 AWG	Sol. : 2,4 ,6 AWG str. : 4 AWG	—	HO	HO, 15501-A	HO, 15501-A	CF102-1
Str. : 1/0,1,2 AWG	Str. : 1,2,1/0 AWG	—	HO			CF1010-1
Str. : 1/0,2/0 AWG	Str. : 1,2, 1/0,2/0 AWG	—	HBKT,HBKC	HBKT,HBKC	HBKT,HBKC	CF202-1
Str. : 1/0,2/0 AWG	Str. : 1,2, 1/0,2/0 AWG	—	HBKT,HBKC			CF2020-1
Str. : 2/0,3/0,4/0 AWG	Sol. : 2,4 AWG TOR : 4 AWG	—	HD,15502	HD,15502	HD,15502	CF402-1
Str. : 2/0,3/0,4/0 AWG	Str. : 1,2,1/0 AWG	—	HD,15502			CF4010-1
Str. : 2/0,3/0,4/0 AWG	Str. : 2/0,3/0,4/0 AWG	—	HD,15502			CF4040-1

Tower ground clamps - Type GTC



Conductor range		Channel thickness (in.)	Cat. no.
Max.	Min.		
2/0 str.	4 sol.	1/4	GTC13
250 Kcmil	2/0 str.		GTC14
2/0 str.	4 sol.		GTC23
250 Kcmil	2/0 str.		GTC24

Ground rod clamps - Type JAB



Wire range		Nominal rod dia. (in.)	Cat. no.
Max.	Min.		
2 AWG	10 AWG	1/2	*JAB12
1/0 AWG	8 AWG	5/8	JAB58H
1/0 AWG	8 AWG	3/4	JAB34H
3/0 AWG	8 AWG	3/4 and 5/8	JAB34C

* CSA not applicable.

Wide range tower ground clamp - Type CTG



Wire range		Depth (in.)	Cat. no.
Max.	Min.		
250 Kcmil	2 sol.	1.13	CTG250

Grounding system - Compression connectors

C-Taps



Application		Manual tools (TBM5/5S)	Manual tools (TBM6/6S)	Manual tools (TBM8/S)	Hydraulic and battery tools (TBM6H) (TBM6PCR-LI) (TBM6PCR-LI) (TBM62CR-LI) (TBM62PCR-LI) (TBM6UNICRLI)	Battery tool (BPLT62BSCR)	Battery tools (TBM12PCR-LI) (TBM14CR-LI) *(TBM15CR-LI)	Colour code	Thick-walled heat-shrinkable tube of HS type	Cat. no.	
Main	Branch	Dies									
6 AWG	10,12 AWG	TBM45S TBM45BB TBM41E	13454	13472/ 13476	13461	6TON29SS	TBM6229	15527-CK	Grey	HS12-6	54715
8 AWG 4 or 5 AWG	8,10, 12 AWG					6TON33SS	TBM6233	15528SS	Brown		54720
6 AWG	6, 8 AWG					6TON37SS	TBM6237	15513-CK	Green	HS6-1	54725
3 AWG 4 or 5 AWG	6,8,10 and 12***AWG 6, 5 AWG					6TON42SS	TBM6242	15508SS	Pink		54730
2 AWG	6,8,,10 and AWG	—	13455	13474/ 13477	13462	6TON45SS	TBM6245	15526SS	Black		54735
3 AWG	5 AWG	—				6TON50SS	TBM6250	15530SS	Orange		54740
4 AWG	3 AWG	—				6TON54SS	TBM6254	15511SS	Purple	HS4-30	54745
1 AWG	4,5,6,8,10 and 12 AWG	—				6TON62SS	TBM6262	15510-CK	Yellow		54750
2 AWG	4,5 AWG	—	13456	13473/ 13478	13463						
3 AWG	3,4 AWG	—									
1/0 AWG	4,5,6,8,10 and 12 AWG	—									
1 AWG	3,4 AWG	—									
2 AWG	2,3 AWG	—									
2/0 AWG	3,4,5,6,8,10 and 12 AWG	—									
1/0 AWG	2,3 AWG	—									
1 AWG	1,3 AWG	—									
3/0 AWG	2,3,4,5, 6,8,10 and 12 AWG	—									
2/0 AWG	1,2 AWG	—									
1/0 AWG	1/0,1 AWG	—									

Type H and C



Aluminum Compression H-Tap

63110
63118
63125
63140

Grounding system - Compression connectors

C-Taps



Application		Manual and hydraulic tools TBM14M	Battery tools TBM12PCR-LI TBM14CR-LI *TBM15CR-LI	Hydraulic and battery tools TBM6H TBM6PCR-LI TBM6PCR-LI TBM62CR-LI TBM62PCR-LI TBM6UNICRLI	Hydraulic tools TBM12	Hydraulic tools 13100A	Hydraulic tools *TBM15I	No. of crimps	Die code	Colour code	Cat. no.
Main	Branch	Dies									
1 AWG	1 AWG	—	—	—	—	—	—			—	
1/0 AWG	1/0 - 2 AWG	15512SS	15512SS	6TON76SS	TBM12D-4	15512SS	*15512SS	1	76	Blue	54755
2/0 AWG	2/0 - 4 AWG								76H		
3/0 AWG	1/0 - 6 AWG								76		
4/0 AWG	1 - 8 AWG										
2/0 AWG	2/0 - 1 AWG	15506SS	15506SS	6TON87SS	TBM12D-3	15512SS	*15506SS	2	87H	Brown	54760
3/0 AWG	3/0 - 3 AWG								87H		
4/0 AWG	4/0 - 4 AWG								87H		
250 AWG	1/0 - 8 AWG								87H		
2/0 AWG	2/0 - 1 AWG	15505SS	15505SS	—	TBM12D-2	15505SS	*15505SS	2	99H	Pink	54765
3/0 AWG	3/0 - 2 AWG								99H		
4/0 AWG	4/0 - 4 AWG								99H		
250 AWG	3/0 - 6 AWG								99H		
300 AWG	2/0 - 8 AWG	15515SS	15515-CK	—	TBM12D-2	15515SS	*15515SS	2	106H	Black	54770
4/0 AWG	4/0 - 2/0 AWG								106H		
250 AWG	250 - 1 AWG								106H		
300 AWG	4/0 - 4 AWG								106H		
350AWG	3/0 - 6 AWG	15504SS	15504SS	—	TBM12D-1	15504SS	*15504SS	2	115H	Yellow	54775
250 AWG	250 AWG								115H		
300 AWG	300 - 1/0 AWG								115H		
350AWG	350 - 1/0 AWG								115H		
400 AWG	300 - 2 AWG								115H		
450 AWG	250 - 4 AWG								115H		
500 AWG	250 - 6 AWG										

Interlocking insulating covers for compression taps - Type H and C



For H-taps		For C-taps		
H-taps aluminum	H-taps copper	Type C	Colour code	Cat. no.
—	—	54755	Blue	HTC40
—	—	54760	Brown	
63148	CHT50010 5 CHT50040-4 CHT75010-3 CHT750350-2	54765	Pink	HTC500
63160		54770	Black	
		54775	Yellow	

Grounding system - Compression connectors

Clamps - Type GUV



Conductor range (Cu)		Nominal rod size (in.)		IPS pipe size (in.)		Cat. no.
Max.	Min.	Max.	Min.	Max.	Min.	
250kcmil	2/0 AWG	1	7/8	3/4	1/2	GUV7825
2/0 AWG	4 AWG	1-1/2	1-3/8	1-1/4		GUV13821
4 AWG	8 AWG					
250kcmil	2/0 AWG	1-7/8	1-5/8	1-1/2		GUV15825
250kcmil	2/0 AWG	2-3/8	2	2		GUV2025
2/0 AWG	4 AWG					
250kcmil	2/0 AWG	3-1/2	3	3		GUV2021
2/0 AWG	4 AWG					
2/0 AWG	4 AWG	3/4	5/8	3/8		GUV3025
4 AWG	8 AWG					
						GUV3021
						GUV5821

Waterpipe ground clamps



Conductor range (Cu)		Water pipe size (in.)		Cat. no.
Max.	Min.	Max.	Min.	
4/0 AWG	4 AWG	1	1/2	3902BU
		2	1 1/4	3903BU
		3 1/2	2 1/2	3904BU
		5	4	3905BU
		6	—	3906BU
		8	—	3907BU

Copper Lay-In Lug - Type DB



Conductor range (Cu)		Sizes of studs (in.)		Cat. no.
Max.	Min.			
4 AWG	14 AWG	0.22		CULL4-14
4 AWG	14 AWG	0.22		CULL4-14TP (Tinned connectors)

High Strength Split-Bolt Connector - Type H



Main cable and branch cable of the same gauge	Cat. no.
10 Str.-12 Sol.	9H
8 Str.-10 Sol.	8H
6 Sol.-8 Sol.	6H
4 Sol.-8 Sol.	4H
3 Sol.-8 Sol.	3H
2 Sol.-6 Sol.	2H
2 Str.-6 Sol.	1H
1/0 Str.-4 Sol.	10H
2/0 Str.-2 Sol.	20H
250 kcmil-1 Str.	40H
350 kcmil-250 kcmil	350M
500 kcmil-400 kcmil	500M
750 kcmil-600 kcmil	750M
1000 kcmil-800 kcmil	1000M

Mechanical connectors for conductors - Al and Cu - Type ADR



Conductor range		Bolt size	Cat. no.
max.	min.		
6 Str.	14 AWG	1/4	ADR6
2 Str.	14 AWG		ADR2
1/0 Str.	14 AWG		ADR11
2/0 Str.	14 AWG	5/16	ADR21
250 kcmil	6 Str.		ADR25
300 kcmil	6 Str.		ADR30
350 kcmil	6 Str.		ADR35
500 Kcmil	4 Str.	3/8	ADR50
600 kcmil	2 Str.		ADR60
800 kcmil	300 kcmil		ADR80
1000 kcmil	500 kcmil		ADR99

Mechanical connectors for conductors - Al and Cu - Type ADR



Conductor range		Bolt size	Cat. no.
max.	min.		
1/0 Str.	14 AWG	1/4	ADR11-21
2/0 Str.	14 AWG		ADR21-21
250 Kcmil	6 Str.	3/8	ADR25-21
350 Kcmil	6 Str.		ADR35-21
600 Kcmil	2 Str.	1/2	ADR60-21
800 Kcmil	300 Kcmil		ADR80-21
1000 Kcmil	500 Kcmil	5/8	ADR99-21

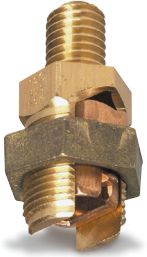
Split-bolt connectors for connections Cu to Cu - Type H



Main cable and branch cable of the same gauge	Cat. no.
1 Str. to 8 Sol.	1HPS
6 Str. to 12 Sol.	6HPS

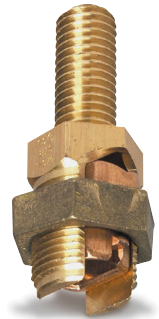
Grounding system - Compression connectors

Service post connectors, short stud application, copper to copper - Type DS



Conductor range stranded AWG (mm ²)		Single conductor	Double conductor
max.	min.	Cat. no.	Cat. no.
8 AWG/6 mm ²	12 AWG/4 mm ²	SPOSS	SPODS
7 AWG/10 mm ²	10 AWG/6 mm ²	SP1SS	SP1DS
5 AWG/16 mm ²	10 AWG/6 mm ²	SP2SS	SP2DS
3 AWG/25 mm ²	10 AWG/6 mm ²	SP3SS	SP3DS
1 AWG/35 mm ²	8 AWG/6 mm ²	SP4SS	SP4DS
1/0 AWG/50 mm ²	2 AWG/35 mm ²	SP5SS	SP5DS
2/0 AWG/70 mm ²	2 AWG/35 mm ²	SP6SS	SP6DS
4/0 AWG/95 mm ²	1 AWG/35 mm ²	SP8SS	SP8DS
350 AWG/150 mm ²	1/0 AWG/70 mm ²	SP9SS	SP9DS
500 AWG/240 mm ²	3/0 AWG/95 mm ²	SP10SS	SP10DS

Service post connectors, long stud application, copper to copper - Type SP



Conductor range stranded AWG (mm ²)		Single conductor	Double conductor
max.	min.	Cat. no.	Cat. no.
8 AWG/6 mm ²	12 AWG/4 mm ²	SPOSL	SPODL
7 AWG/10 mm ²	10 AWG/6 mm ²	SP1SL	SP1DL
5 AWG/16 mm ²	10 AWG/6 mm ²	SP2SL	SP2DL
3 AWG/25 mm ²	10 AWG/6 mm ²	SP3SL	SP3DL
1 AWG/35 mm ²	8 AWG/6 mm ²	SP4SL	SP4DL
1/0 AWG/50 mm ²	2 AWG/35 mm ²	SP5SL	SP5DL
2/0 AWG/70 mm ²	2 AWG/35 mm ²	SP6SL	SP6DL
4/0 AWG/95 mm ²	1 AWG/35 mm ²	SP8SL	SP8DL
350 AWG/150 mm ²	1/0 AWG/70 mm ²	SP9SL	SP9DL
500 AWG/240 mm ²	3/0 AWG/95 mm ²	SP10SL	SP10DL

Copper single conductor, one-hole mount - Type BTC



Conductor range		Bolt size	Cat. no.
max.	min.		
10 AWG	14 AWG	5/32	BTC1014*
6 Str.	14 AWG	13/64	BTC0614
2 Str.	8 Str.	17/64	BTC0208
1/0 Str.	2 Str.	13/32	BTC1102
3/0 Str.	4 Str.	11/32	BTC3104
4/0 Str.	2 Str.	11/32	BTC4102
350 kcmil	1/0 Str.	13/32	BTC3511
500 kcmil	1/0 Str.	13/32	BTC5011
1000 kcmil	600 kcmil	17/32	BTC9960

Flexible braids



Nominal range (A)	Circular mils	Descriptions	Cat. no.
190 -1000 A	76,800	12-inch flat flexible braid with a 7/16-inch bolt hole	FBD12-1
190 - 1000 A		18-inch flat flexible braid with a 7/16-inch bolt hole	FBD18-1
400 - 2000 A	153,600	12-inch flat flexible braid with a 7/16-inch bolt hole	FB2D12
400 - 2000 A		18-inch flat flexible braid with a 7/16-inch bolt hole	FB2D18

* CSA not applicable.

EZ-CK SS DIEKIT



Die Cat. no.	Copper	Aluminum	Colour code
15528SS	2 AWG	—	Brown
15513SS	1 AWG	4 AWG	Green
15508SS	1/0 AWG	2 AWG	Pink
15526SS	2/0 AWG	1 AWG (Gold)	Black
15530SS	3/0 AWG	1/0 AWG (Tan)	Orange
15511SS	4/0 AWG	2/0 AWG (Olive)	Purple
15510SS	250 kcmil	—	Yellow
15534SS	300 kcmil	4/0 AWG	White
15514SS	350 kcmil	250 kcmil	Red
15506SS	500 kcmil	350 kcmil	Brown
15515SS	750 kcmil	650 kcmil	Black
15G121R	250-500 kcmil • #2-250 kcmil	—	—
15G86R	#2-250 kcmil	—	—
15501A	#6 - #2 AWG	—	—
15G126R	250-500 kcmil	—	—

Tools and dies

The ABB compression method is used with harmonized tools and dies to form the connector and conductor into a homogeneous mass, ensuring an optimal connection between the two.

The ABB installation method for compression connectors on power cables allows for highly reliable electrical wiring. This method enables electricians to perform simple and quick installations. The advantage, of course, is a high-quality connection at a low installation cost.

A complete range for a solid and homogeneous connection

ABB offers a complete range of CEI & UL/CSA certified compression lugs in metric dimensions (Color-Keyed and Spec-Kon) as well as imperial/American Wire Gauge (AWG) sizes (Color-Keyed). All systems use compression tools with corresponding dies to form the connector and wire, providing an optimal electrical connection between the lug and the conductor.



TBM45S crimp tool



Creates diamond-style crimp

- Wide range of #8 to #2 for copper lugs and #10 to #6 for aluminum lugs
- Each die has die code embossing
- Shure Stake mechanism ensures a properly completed crimp each time
- Colour-coded die wheel rotates into position for proper die nest adjustment
- Also installs up to green colour-coded C-Taps and MD2 series motor disconnects
- Requires two crimps per connector



Cat no.	Description	Pkg. qty.
TBM45S	Crimp tool with Shure Stake mechanism for #8–#2 copper and #10–#6 aluminum lugs	1



Crimp-Assist™ foot provides stability when work surface leverage is needed to crimp larger connectors.

Cat no.	Conductor size					
	#10 Red	#8 Red	#6 Blue	#4 Grey	#2 Brown	#1 Green
Copper connectors						
One hole, short	-	54104	54134	54138	54107	-
One hole, short	-	54130	54105	54106	54142	-
One hole, short	-	54131	54135	54139	54143	-
One hole, short	-	54132	54136	54140	54145	-
One hole, short	-	54104	54205	54206	54207	-
Splice, short	-	54504	54505	54506	54507	-
One hole, long	-	54930BE	54905BE	54906BE	54942BE	-
Two hole, long	-	54850BE	54852BE	54854BE	54856BE	-
Splice, long	-	54804	54805	54806	54807	-
Cable joints	-	-	54610	54615	54620	-
Narrow tongue	-	-	-	55112	55116	-
C-taps	-	54705	54710	54715	54720	54725
Motor disconnects	-	MD8 series	MD6 series	MD4 series	MD2 series	-
Aluminum connectors						
Bi-pins	-	61905A	61910A	-	-	-
Equipment lugs	-	61102	61107	-	-	-

TBM6 and TBM6S* crimp tools



- Wide range of #8 thru 500 kcmil for copper lugs, splices and taps and #10 thru 350 kcmil for aluminum lugs and splices
- Also install 63105 through 63140 orange, green and blue H-Taps
- Shure Stake mechanism ensures a properly completed crimp each time (only in TBM6S)
- Complete with plastic carrying case and wire brush
- No dies included

Die type



Creates diamond-style crimp



Cat no.	Colour code	Al	Cu	Upper die Cat. no.	Lower die Cat. no.	Pkg. qty.
TBM6 or TBM6S*	Red	10	8	13475	13477	1
	Blue	8	6	13475	13477	1
	Grey	6	4	13472	13476	1
	Brown	-	2	13474	13477	1
	Green	4	1	13474	13477	1
	Pink	2	1/0	13475	13477	1
	Black	-	2/0	13474	13477	1
	Orange	-	3/0	13474	13477	1
	Violet	-	4/0	13475	13477	1
	Yellow	-	250	13473	13476	1
	Or	1	-	13474	13477	1
	Tan	1/0	-	13474	13477	1
	Olive	2/0	-	13475	13477	1
	Ruby	3/0	-	13473	13476	1
	White	4/0	-	13473	13476	1
	Red	250	350	13472	13476	1
	Blue	300	400	13472	13476	1
	Brown	-	500	13478	13478	1

* TBM6S includes shure stake mechanism; TBM6 does not.

Carrying cases for TBM6 and TBM6S

Cat no.	Description	Pkg. qty.
295-31365M	Steel carrying case for TBM5, TBM5S, TBM6 and TBM6S	1
295-31365	Plastic carrying case for TBM5, TBM5S, TBM6 and TBM6S	1

OD series manual compression tool



Die type



Dies for:
OD58
OD581
OD583

- Integral self-gauging system in tool head assures proper adjustment before each crimp
- Improved design reduces force to crimp by as much as 20%
- Teflon® over bronze bearings greatly reduces wear at linkage and pins; far superior to steel bearing surfaces
- All standard insert dies available for OD58 tool (“O” and “D”, 840, etc.), 5/8 in. fixed die in nose
- ODF tool has fixed “O” and “D” dies
- ODB tool has fixed “O” and “D” dies; accepts standard insert dies designed for MD6 tool
- Distribution of weight over tool length gives better balance, results in easier handling and positioning
- Optional fiberglass handles for greater strength, lighter weight, better insulating properties and lower moisture absorption rate
- ODF and ODB tools with insulated heads available as an option
- Lever action tool with hot stick handles of Glastrux Fiberglass, rated and tested for 100kV/ft./5 minutes
- Lever action results in minimum applied force to crimp

Fixed 5/8 dies on:

- OD58 wooden handles
- OD581 fiberglass handles
- OD583 curved wooden handles

O,D,T,K etc. dies



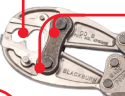
Fixed O and D dies.
ODF1 straight fiberglass handles

Suitable for Burndy MD6 removable dies.



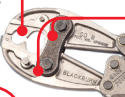
Fixed O and D dies.
ODB wooden handles

Suitable for Burndy MD6 removable dies.



Fixed O and D dies.
ODB1 fiberglass handles

Suitable for Burndy MD6 removable dies.



Fixed O and D dies.
ODB3 curved wooden handles

Suitable for Burndy MD6 removable dies.



Insulating head cover :
• ODB
• ODH1



Removable dies – TBM6H hydraulic press and OD-type tools

Cat no.	Description or colour code	Cat no.	Description or colour code
OJB	0	BY37	840 (EEI 11A)
DBL	D	BY55	Wire cutter (2/0 max.)
BY39	510 Hex (Unbent)	BY63	Orange (Nicopress)
BY41	635 Hex (Unbent)	BY65	Purple
BY43	747 Hex (Unbent)	BY15C*	7/32 Red
BY45	T	BY17C*	1/4 Blue
BY47	K	BY19C*	5/16 Grey
BY49	B	BY21C*	3/8 Brown
BY51	J	BY23C*	1/2 Pink
BY53	P	BY24C*	1/2-1 Gold
BY13	3/16	BY25C*	9/16 Tan/orange
BY15*	7/32 (EEI-1 index 236)	BY27C*	11/16 Yellow
BY17	1/4	BY31C*	5/8-1 Olive/Purple
BY19	5/16 (index 161.242)	BY32C*	Ruby
BY21	3/8	BY35C*	781 White
BY23	1/2 (index 163)	BY37C*	840 Red
BY25	9/16	BY28C*	17/32 Black
BY27	11/16	BY53C*	P Green
BY29	19/32		
BY31	5/8-1 (index 165)	BG-1-BB	Canvas bag for OD58 tool
BY33	737		
BY35	781	ODH1	Insulating cover for tool head

TBM8 and TBM8S* crimp tools



- Install coded copper lugs and connectors #8 through 500 kcmil
- Install aluminum lugs and connectors #10 through 350 kcmil
- Shure Stake mechanism ensures positive compression (only in TBM8S)
- Included dies are colour-coded and provide die-code embossing for easy installation and inspection
- Install all coded copper compression joints and a selection of small C-Taps
- Complete with installing dies and wire brush in plastic carrying case

Die type



Creates diamond-style crimp



Cat no.	Colour code	Al	Cu	Lower die Cat. no.	Pkg. qty.
TBM8 or TBM8S*	Red	10	8	13461	1
	Blue	8	6	13461	1
	Grey	6	4	13461	1
	Brown	–	2	13461	1
	Green	4	1	13462	1
	Pink	2	1/0	13462	1
	Black	–	2/0	13462	1
	Orange	–	3/0	13462	1
	Violet	–	4/0	13463	1
	Yellow	–	250	13463	1
	Or	1	–	13464	1
	Tan	1/0	–	13464	1
	Olive	2/0	–	13464	1
	Ruby	3/0	–	13464	1
	White	4/0	300	13465	1
	Red	250	350	13466	1
Blue	300	400	13467	1	
Brown	350	500	13468	1	

* TBM8S includes shure steak mechanism; TBM8 does not.

TBM840 crimp tool



- Wide range of #8 to 4/0 for copper connectors and splices
- Installs lugs and splices series 54000 and 58000
- 8-position colour-coded rotatable die
- Comfort hand grip
- Die index embossed for permanent inspectability
- Overall length: 233/4 in.
- Handle length: 161/2 in.
- Weight: 8.8 lb



Cat no.	Description	Pkg. qty.
TBM840	Crimp tool for #8 to 4/0 copper lugs with rotating colour-coded die wheel	1

Wire range (AWG or kcmil)		
Copper	Al / Cu	Colour code
#8	#10	Red
#6	#8	Blue
#4	#6	Grey
#2	-	Brown
#1	#4	Green
1/2	#2	Pink
2/0	-	Black
3/0	-	Orange
4/0	--	Violet

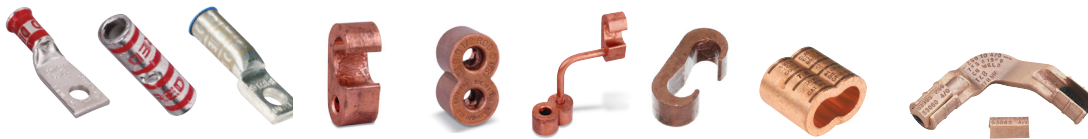
TBM14M 14-ton manual hydraulic crimp tool



Die type



Creates hex-style crimp



- Features fiberglass handles for insulation and ease of use in tight spaces
- Two-stage pump provides rapid advance for fast installation
- Uses standard ABB Color-Keyed 15500 series dies

Specifications

- Installing range:
 - Up to 900 kcmil copper lugs and splices
 - Up to 750 kcmil aluminum lugs and splices
 - CHT814-10 to CHT2502-6 copper H-taps
 - 63105 to 63148 aluminum H-taps
 - 54755 to 54775 C-taps
- Output force: 14 tons
- Length: 24 in.
- Weight without dies: 15.4 lb

Conductor range

Copper code (AWG or kcmil)	Flex/24	Al/Cu (AWG or kcmil)	Colour code die	Die Cat. no.	Die code
8	37/24	#10	Red	15520XSS	21X
6	61/24	#8	Blue	15522XSS	24X
4	91/24	#6	Grey	15527XSS	29X
2	125/24	-	Brown	15528XSS	33X
1	150/24	#4	Green	15513XSS	37X
1/0	225/24	#2	Pink	15508XSS	42X
2/0	275/24	-	Black	15526XSS	45X
3/0	325/24	-	Orange	15530XSS	50X
4/0	450/24	-	Violet	15511XSS	54X
250	550/24	-	Yellow	15110XSS	62X
-	-	#1	Or	-	-
-	-	1/0	Tan	-	-
-	-	2/0	Olive	-	-
-	-	3/0	Ruby	-	-
300	-	4/0	White	15534XSS	66X
350	775/24 (Short)	250	Red	15514XSS	71X
400	775/24 (Long)	300	Blue	15512XSS	76X
-	925/24*	-	-	15517XSS	80X
-	-	-	-	-	-
500	-	350	Brown	15506XSS	87X
600	1100/24	400	Green	15536XSS	84X
-	1325/24**	-	Pink	-	-
700	-	500	Pink	-	-
750	-	650	Black	-	-
800	-	-	Orange	-	-
-	-	700	Violet	-	-
900	195/24	750	Yellow	-	-
1000	-	800	-	-	-
1250	-	1000	-	-	-
1500	-	-	-	-	-

TBM6PCR-LI – Li 6-ton open crimp tool



Die type



- Designed for one-handed control ram advancement and retraction
- Open yoke design with rotating head allows for maximum crimping flexibility
- Protective rubber insulated boot on head
- Rapid advance feature decreases crimp time
- Approx. 350 crimps per full battery charge (based on 3/0 AWG cable)

Specifications

- Capacity: Cu #8–600 kcmil, Al #8–400 kcmil
- Output force: 6 tons
- Dimensions (L x W x H): 13 in. x 2.5 in. x 12 in.
- Battery: 14.4 V DC
- Weight with battery: 8.75 lb



Conductor range				TBM6PCR-LI / TBM6H	
Copper code (AWG or kcmil)	Flex/24	Al/Cu (AWG or kcmil)	Colour code die	Die Cat. no.	Die code
#8	37/24	#10	Red	6TON21SS	21
#6	61/24	#8	Blue	6TON24SS	24
#4	91/24	#6	Grey	6TON29SS	29
#2	125/24	-	Brown	6TON33SS	33
#1	150/24	#4	Green	6TON37SS	37
1/0	225/24	#2	Pink	6TON42SS	42
2/0	275/24	-	Black	6TON45SS	45
3/0	325/24	-	Orange	6TON50SS	50H
4/0	450/24	-	Violet	6TON54SS	54H
250	550/24	-	Yellow	6TON62SS	62H
-	-	#1	Or	6TON45SS	45
-	-	1/0	Tan	6TON50SS	50H
-	-	2/0	Olive	6TON54SS	54H
-	-	3/0	Ruby	6TON60SS	60H
300	-	4/0	White	6TON66SS	66H
350	775/24 (Short)	250	Red	6TON71SS	71H
400	775/24 (Long)	300	Blue	6TON76SS	76H
-	925/24*	-	-	6TON80SS	80H
-	-	-	-	-	-
500	-	350	Brown	6TON87SS	87H
600	1100/24	400	Green	6TON94SS	94H

TBM6PCR-LI – Li 6-ton closed crimp tool



- Designed for one-handed control ram advancement and retraction
- Rotating head allows maximum flexibility for crimping
- Rapid advance feature decreases crimp time
- Approx. 350 crimps per full battery charge (based on 3/0 AWG cable)

Specifications

- Capacity: Cu #8–600 kcmil, Al #10–400 kcmil
- Output force: 6 tons
- Dimensions (L x W x H): 13 in. x 2.5 in. x 12 in.
- Battery: 14.4 VDC
- Weight with battery: 8.5 lb

Die type



Conductor range					TBM6PCR-LI	
Copper code (AWG or kcmil)	Flex/24	Al/Cu (AWG or kcmil)	Colour code die	Hex-Flex die Cat. no.	Hex-Flex die code	
8	37/24	#10	Red	6TON21XSS	21X	
6	61/24	#8	Blue	6TON24XSS	24X	
4	91/24	#6	Grey	6TON29XSS	29X	
2	125/24	–	Brown	6TON33XSS	33X	
1	150/24	#4	Green	6TON37XSS	37X	
1/0	225/24	#2	Pink	6TON42XSS	42X	
2/0	275/24	–	Black	6TON45XSS	45X	
3/0	325/24	–	Orange	6TON50XSS	50X	
4/0	450/24	–	Violet	6TON54XSS	54X	
250	550/24	–	Yellow	6TON62XSS	62X	

TBM12PCR-LI – Li inline 12-ton open crimp tool



- Designed for one-handed control ram advancement and retraction
- Rotating head allows maximum flexibility for crimping and a protective rubber boot on “C” head
- Rapid advance feature decreases crimp time
- Approx. 150 crimps per full battery charge (based on 3/0 AWG cable)

Specifications

- Capacity: Cu #8–750 kcmil, Al #8–750 kcmil
- Output force: 12-ton
- Dimensions (L x W x H): 16.5 in. x 3.3 in. x 12.6 in.
- Battery: 14.4 V DC
- Weight with battery: 16.8 lb

Conductor range					TBM12PCR-LI
Copper code (AWG or kcmil)	Flex/24	Al/Cu (AWG or kcmil)	Colour code die	Die Cat. no.	Die code
8	37/24	#10	Red	15520SS	21
6	61/24	#8	Blue	15522SS	24
4	91/24	#6	Grey	15527SS	29
2	125/24	–	Brown	15528SS	33
1	150/24	#4	Green	15513SS	37
1/0	225/24	#2	Pink	15508SS	42
2/0	275/24	–	Black	15526SS	45
3/0	325/24	–	Orange	15530SS	50
4/0	450/24	–	Violet	15511SS	54
250	550/24	–	Yellow	15510SS	62
–	–	#1	Or	15526SS	45
–	–	1/0	Tan	15530SS	50
–	–	2/0	Olive	15511SS	54
–	–	3/0	Ruby	15532SS	60
300	–	4/0	White	15534SS	66
350	775/24 (Short)	250	Red	15514SS	71
400	775/24 (Long)	300	Blue	15512SS	76
–	925/24*	–	–	15517SS	80H
–	–	–	–	–	–
500	–	350	Brown	15506SS	87H
600	1100/24	400	Green	15536SS	94H
–	1325/24**	–	Pink	–	–
700	–	500	Pink	15505SS	99H
750	–	650	Black	15515SS	106H
800	–	–	Orange	15540SS	107H
–	–	700	Violet	–	–
900	195/24	750	Yellow	15504SS	115H

TBM14CR-LI – Li 14-ton open crimp tool



Die type



- Rotating head allows maximum flexibility for crimping
- Protective rubber boot on “C” head
- Rapid advance feature decreases crimp time
- Approx. 150 crimps per full battery charge (based on 3/0 AWG cable)

Specifications

- Installing range :
 - Up to 900 kcmil copper lugs and splices
 - Up to 750 kcmil aluminum lugs and splices
- Capacity: Cu #8–900 kcmil, Al #10–750 kcmil
- Output force: 14 tons
- Dimensions (L x W x H): 19 in. x 3.5 in. x 10.5 in.
- Battery: 14.4 V DC
- Weight with battery: 20 lb



Conductor range					TBM14CR-LI	
Copper code (AWG or kcmil)	Flex/24	Al/Cu (AWG or kcmil)	Colour code die	Die Cat. no.	Die code	
8	37/24	#10	Red	15520XSS	21X	
6	61/24	#8	Blue	15522XSS	24X	
4	91/24	#6	Grey	15527XSS	29X	
2	125/24	-	Brown	15528XSS	33X	
1	150/24	#4	Green	15513XSS	37X	
1/0	225/24	#2	Pink	15508XSS	42X	
2/0	275/24	-	Black	15526XSS	45X	
3/0	325/24	-	Orange	15530XSS	50X	
4/0	450/24	-	Violet	15511XSS	54X	
250	550/24	-	Yellow	15110XSS	62X	
-	-	#1	Or	-	-	
-	-	1/0	Tan	-	-	
-	-	2/0	Olive	-	-	
-	-	3/0	Ruby	-	-	
300	-	4/0	White	15534XSS	66X	
350	775/24 (Short)	250	Red	15514XSS	71X	
400	775/24 (Long)	300	Blue	15512XSS	76X	
-	925/24*	-	-	15517XSS	80X	
-	-	-	-	-	-	
500	-	350	Brown	15506XSS	87X	
600	1100/24	400	Green	15536XSS	84X	
-	1325/24**	-	Pink	-	-	
700	-	500	Pink	-	-	
750	-	650	Black	-	-	
800	-	-	Orange	-	-	
-	-	700	Violet	-	-	
900	195/24	750	Yellow	-	-	

TBM14CR-LI – Battpac™ TBM15CR-LI hermetically sealed 15-ton battery-powered compression tool



Die type



- Rotating head allows maximum flexibility for crimping
- Protective rubber boot on head
- Rapid advance feature decreases crimp time
- Approx. 150 crimps per full battery charge (based on 3/0 AWG cable)

Specifications

- Installing range:
 - Up to 900 kcmil copper lugs and splices
 - Up to 750 kcmil aluminum lugs and splices
- Capacity: Cu #8–900 kcmil, Al #10–750 kcmil
- Output force: 14 tons
- Dimensions (L x W x H): 19 in. x 3.5 in. x 10.5 in.
- Battery: 14.4 V DC
- Weight with battery: 24 lb



Conductor range					TBM15CR-LI	
Copper code (AWG or kcmil)	Flex/24	Al/Cu (AWG or kcmil)	Colour code die	Die Cat. no.	Die code	
8	37/24	#10	Red	15520SS	21	
6	61/24	#8	Blue	15522SS	24	
4	91/24	#6	Grey	15527SS	29	
2	125/24	-	Brown	15528SS	33	
1	150/24	#4	Green	15513SS	37	
1/0	225/24	#2	Pink	15508SS	42	
2/0	275/24	-	Black	15526SS	45	
3/0	325/24	-	Orange	15530SS	50H	
4/0	450/24	-	Violet	15511SS	54H	
250	550/24	-	Yellow	15510SS	62H	
-	-	#1	Or	15526SS	45	
-	-	1/0	Tan	15530SS	50H	
-	-	2/0	Olive	15511SS	54H	
-	-	3/0	Ruby	15532SS	60H	
300	-	4/0	White	15534SS	66H	
350	775/24 (Short)	250	Red	15514SS	71H	
400	775/24 (Long)	300	Blue	15512SS	76H	
-	925/24*	-	-	15517SS	80H	
-	-	-	-	-	-	
500	-	350	Brown	15506SS	87H	
600	1100/24	400	Green	15536SS	94H	
-	1325/24**	-	Pink	-	-	
700	-	500	Pink	15505SS	99H	
750	-	650	Black	15515SS	106H	
800	-	-	Orange	-	-	
-	-	700	Violet	-	-	
900	195/24	750	Yellow	15504SS	115H	



ABB Electrification Canada Inc.

Electrification Business

700 Thomas avenue,

Saint-Jean-sur-Richelieu, QC J2X 2M9

tnb.ca.abb.com

We reserve the right to make technical changes or modify the contents of this document without prior notice. With regard to purchase orders, the agreed particulars shall prevail. ABB Installation Products Inc. does not accept any responsibility whatsoever for potential errors or possible lack of information in this document.

We reserve all rights in this document and in the subject matter and illustrations contained therein. Any reproduction or utilization of its contents – in whole or in parts – is forbidden without prior written consent of ABB Installation Products Inc. Copyright © 2023 ABB Installation Products Inc. All rights reserved