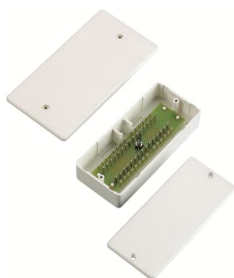




PRODUCT-DETAILS

SUDD28L**SUDD28 Junction Box, 28 x 2-pole, Flush Mounted****General Information**

Extended Product Type	SUDD28L
Product ID	GHQ3050005R0001
EAN	4016779533102
Catalog Description	SUDD28 Junction Box, 28 x 2-pole, Flush Mounted
Long Description	Label carrier

Technical

Power Loss	0 W
Number of Batteries	0

Dimensions

Product Net Width	25 mm
Product Net Height	60 mm
Product Net Depth / Length	140 mm

Product Net Weight 0.082 kg

Ordering

Package Level 1 Units carton 1 piece
 Package Level 1 Gross Weight 0.1 kg

Popular Downloads

Data Sheet, Technical Information 9AKK2017-108988

Classifications

ETIM 8 EC001488 - Distributor for intrusion detection system
 ETIM 9 EC001488 - Distributor for danger detection system
 WEEE Category 5. Small Equipment (No External Dimension More Than 50 cm)
 WEEE B2C / B2B Business To Consumer
 CN8 8537 10 98
 eClass V11.0 : 27390310
 Object Classification Code A

Categories

Low Voltage Products and Systems → Building and Home Automation Solutions → Intrusion Alarm Systems → Other → Distribution Boxes

