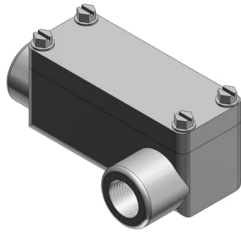




 PRODUCT-DETAILS

OET1-TB

1/2 IN C- BODY IRON OE-T-STYLE XP



General Information

Extended Product Type	OET1-TB
Product ID	7TAD013530R0005
Catalog Description	1/2 IN C- BODY IRON OE-T-STYLE XP
Long Description	1-1/2 Inch GUAB Hazardous Location Conduit Outlet Box, Box Ductile Iron Zinc Plated, Cover Die Cast Aluminum, 73.6 Cubic Inch

Additional Information

Application	OE Series are Installed In Conduit Systems Within Hazardous Areas To: (1) Protect Conductors In Threaded Rigid Conduit, (2) Act As Pulling and Splice Fittings, (3) Interconnect Lengths of Conduit, (4) Change Direction of Conduit, (5) Provide Access for Maintenance and Future System Changes.
Product Type	Conduit Outlet Bodies-Explosionproof

Ordering

UPC	786210912370
-----	--------------

Technical

Number of Batteries	0
Material	Ductile Iron

Environmental

WEEE Category	Product Not in WEEE Scope
RoHS Status	Following EU Directive 2011/65/EU and Amendment 2015/863 July 22, 2019

Container Information

Package Level 1 Units	2 EA
Package Level 1 Height	123.698 mm 4.87 in
Package Level 1 Depth / Length	273.05 mm 10.75 in
Package Level 1 Width	171.45 mm 6.75 in

Certificates and Declarations

Data Sheet, Technical Information	OET1-TB
Instructions and Manuals	OET1-TB

Classifications

ETIM 8	EC003618 - Form part for installation tubes
UNSPSC	39131708

Categories

Low Voltage Products and Systems → Installation Products → Cable Protection, Explosion Proof and Lighting → Rigid Cable Protection Systems

