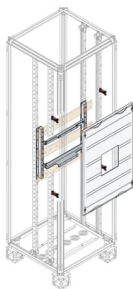




 PRODUCT-DETAILS

MBA211751

Main Distribution Board



General Information

Extended Product Type	MBA211751
Product ID	2CPX043005R9999
EAN	4011617430056
Catalog Description	Main Distribution Board
Long Description	MBA211751 Set Breaker 2PW incom T7/E1: Tmax T7, Emax E1.2 - In up to 1600A

Technical

Software Category	M
Suitable For	Modular boards - System pro E Power
Suitable for Product Class	Main Distribution Board
Number of Poles	2
Remarks	ETIM

Material Compliance

RoHS Information	20090129
RoHS Status	No declaration needed

Environmental

Environmental Information	1STC803009D0103 9AKK108467A6707
---------------------------	------------------------------------

Dimensions

Product Net Width	505 mm
Product Net Height	750 mm
Product Net Depth / Length	55 mm
Product Net Weight	5.21 kg

Ordering

Package Level 1 Units	1 piece
Package Level 1 Gross Weight	5.4 kg

Certificates and Declarations

Declaration of Conformity - CE	No declaration needed
--------------------------------	-----------------------

Installation

Instructions and Manuals	1STS100183R0001
--------------------------	-----------------

Popular Downloads

Data Sheet, Technical Information	1STC803009D0103
-----------------------------------	-----------------

Classifications

ETIM 8	EC001897 - Distributor assembly switch
ETIM 9	EC001897 - Distributor assembly switch
WEEE Category	5. Small Equipment (No External Dimension More Than 50 cm)
WEEE B2C / B2B	Business To Business
CN8	85381000
eClass	V11.1 : 27400611

Categories

Low Voltage Products and Systems → Enclosures → Main Distribution Boards → System pro E power 185mm

