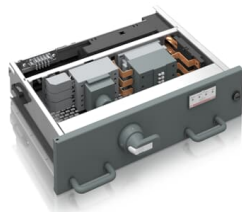




PRODUCT-DETAILS

MStart

Withdrawable Energy Distribution for MNSiS



General Information	
Extended Product Type	MStart
Product ID	1TGE262031C5100
ABB Type Designation	-
Catalog Description	Withdrawable Energy Distribution for MNSiS
Long Description	Withdrawable Energy Distribution for MNSiS (6E, Circuit Breaker), Rated Voltage [V]= 500, Short-Circuit Current [kA]= 65, Rated Power [kW]= -, Rated Current[A]= 100

Technical	
Part Type	New
Product Type	Undefined
Frame Size	Undefined

Dimensions	
Product Net Weight	0 kg

Certificates and Declarations

Declaration of Conformity
- CE

1TGE097001

Popular Downloads

Data Sheet, Technical
Information

1TGC910001B0204
1TGC910809M0202

Classifications

WEEE Category

Product Not in WEEE Scope

Additional Information

Product Main Type

MFeed (3-pole)

Categories

Low Voltage Products and Systems → Low Voltage Systems → IEC - Low Voltage Motor Control Centers → MNS iS

Low Voltage Products and Systems → Low Voltage Systems → IEC - Low Voltage Motor Control Centers → MNS iS

Low Voltage Products and Systems → Service → Spares and Consumables → Parts

