

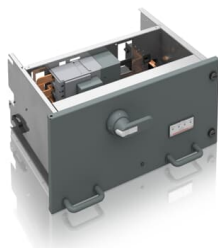



---

 PRODUCT-DETAILS

# MStart

## Withdrawable Motor Starter for MNSiS




---

**General Information**

Extended Product Type	MStart
Product ID	1TGE232012P6160
ABB Type Designation	-
Catalog Description	Withdrawable Motor Starter for MNSiS
Long Description	Withdrawable Motor Starter for MNSiS (12E, Circuit Breaker), Rated Voltage [V]= 690, Short-Circuit Current [kA]= 50, Rated Power [kW]= 90, Rated Current[A]= 93

---

**Technical**

Part Type	New
Product Type	Undefined
Frame Size	Undefined

---

**Dimensions**

Product Net Weight	0 kg
--------------------	------

---

## Certificates and Declarations

---

Declaration of  
Conformity - CE

1TGE097001

---

---

## Popular Downloads

---

Data Sheet, Technical  
Information

1TGC910001B0204  
1TGC910809M0202

---

---

## Classifications

---

WEEE Category

Product Not in WEEE Scope

---

---

## Additional Information

---

Product Main Type

RDOL (3-pole)

---

---

## Categories

---

[Low Voltage Products and Systems](#) → [Low Voltage Systems](#) → [IEC - Low Voltage Motor Control Centers](#) → [MNS iS](#)

[Low Voltage Products and Systems](#) → [Low Voltage Systems](#) → [IEC - Low Voltage Motor Control Centers](#) → [MNS iS](#)

[Low Voltage Products and Systems](#) → [Service](#) → [Spares and Consumables](#) → [Parts](#)

