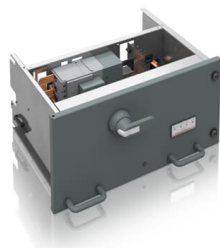




PRODUCT-DETAILS

MStart

Withdrawable Motor Starter for MNSiS



General Information

Extended Product Type	MStart
Product ID	1TGE232012L4100
ABB Type Designation	-
Catalog Description	Withdrawable Motor Starter for MNSiS
Long Description	Withdrawable Motor Starter for MNSiS (12E, Circuit Breaker), Rated Voltage [V]= 400, Short-Circuit Current [kA]= 50, Rated Power [kW]= 45, Rated Current[A]= 80

Technical

Part Type	New
Product Type	Undefined
Frame Size	Undefined

Dimensions

Product Net Weight	0 kg
--------------------	------

Certificates and Declarations

Declaration of
Conformity - CE

1TGE097001

Popular Downloads

Data Sheet, Technical
Information

1TGC910001B0204
1TGC910809M0202

Classifications

WEEE Category

Product Not in WEEE Scope

Additional Information

Product Main Type

RDOL (3-pole)

Categories

[Low Voltage Products and Systems](#) → [Low Voltage Systems](#) → [IEC - Low Voltage Motor Control Centers](#) → [MNS iS](#)

[Low Voltage Products and Systems](#) → [Low Voltage Systems](#) → [IEC - Low Voltage Motor Control Centers](#) → [MNS iS](#)

[Low Voltage Products and Systems](#) → [Service](#) → [Spares and Consumables](#) → [Parts](#)

