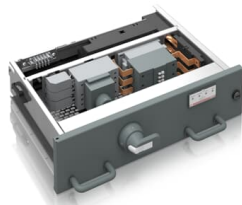




PRODUCT-DETAILS

MStart

W DOL XT2-AF116 6E 55kW 65kA ATEX RF



General Information

Extended Product Type	MStart
Product ID	1TGE107212K4100
ABB Type Designation	-
Catalog Description	W DOL XT2-AF116 6E 55kW 65kA ATEX RF
Long Description	Withdrawable Motor Starter for MNSiS (6E, Circuit Breaker), Rated Voltage [V]= 400, Short-Circuit Current [kA]= 65, Rated Power [kW]= 45, Rated Current[A]= 80

Technical

Product Type	Undefined
Frame Size	Undefined

Certificates and Declarations

Declaration of Conformity - CE	1TGE097001
--------------------------------	------------

Popular Downloads

Data Sheet, Technical
Information

1TGC910001B0204
1TGC910809M0202

Classifications

WEEE Category

Product Not in WEEE Scope

Additional Information

Product Main Type

DOL (3-pole)

Categories

Low Voltage Products and Systems → Low Voltage Systems → IEC - Low Voltage Motor Control Centers → MNS iS
Low Voltage Products and Systems → Service → Spares and Consumables → Parts

