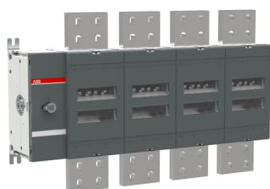




## PRODUCT-DETAILS

**OT3200E04****OT3200E04 SWITCH-DISCONNECTOR****General Information**

Extended Product Type	OT3200E04
Product ID	1SCA128479R1001
EAN	6417019582658
Catalog Description	OT3200E04 SWITCH-DISCONNECTOR
Long Description	4-pole, front operated, base mounted switch-diconductor, handle and shaft are not included, terminal bolt kit included

**Circular Value**

End of Life Instructions	1SCC301124M0201
--------------------------	-----------------

**Eco Transparency**

Environmental Product Declaration - EPD	1SCC301308D0201
---	-----------------

## Environmental

Environmental Information	1SCC301269D0201
---------------------------	-----------------

## Material Compliance

Conflict Minerals Reporting Template (CMRT)	9AKK108467A5658
REACH Declaration	1SCC011021D0201
RoHS Information	1SCC011020D0201
RoHS Status	Following EU Directive 2011/65/EU and Amendment 2015/863 July 22, 2019
Toxic Substances Control Act - TSCA	1SCC011025D0201

## Ordering

Minimum Order Quantity	1 piece
Customs Tariff Number	85365080
Country of Origin	Finland (FI)

## Popular Downloads

Data Sheet, Technical Information	1SCC301020C0201
Instructions and Manuals	1SCC301082M0206
Mechanical Drawings	OT3200E04 Z14-OT3200E04.dwg Z14-OT3200E04.dxf
Environmental Product Declaration - EPD	1SCC301308D0201
End of Life Instructions	1SCC301124M0201

## Dimensions

Product Net Width	654 mm
Product Net Height	410 mm
Product Net Depth / Length	146 mm
Product Net Weight	41.5 kg

## Technical

Rated Operational Current AC-21B (I <sub>e</sub> )	(380 ... 415 V) 3200 A
Rated Operational Current AC-22B (I <sub>e</sub> )	(380 ... 415 V) 3200 A
Conventional Free-air Thermal Current (I <sub>th</sub> )	Θ = 40 °C 3200 A
Rated Impulse Withstand Voltage (U <sub>imp</sub> )	8 kV
Rated Insulation Voltage (U <sub>i</sub> )	acc. to IEC/EN 60664-1 1000 V

Rated Operational Voltage	Main Circuit 1000 V
Rated Short-Circuit Making Capacity ( $I_{cm}$ )	(690 V) 176 kA
Rated Short-time Withstand Current Low Voltage ( $I_{cw}$ )	for 1 s 65 kA
Power Loss	at Rated Operating Conditions per Pole 95 W
Pollution Degree	3
Handle Type	Handle and shaft not included
Fourth Pole Position	Right Side
Fourth Pole Type	Switched - Simultaneous Function
Switches Operating Mechanism	Mechanism at the End of the Switch 04 (Left Side)
Distance Between Phases	Standard
Position of Line Terminals	Top In - Bottom Out Bottom In - Top Out
Operating Mode	Front operated
Standards	IEC 60947-3
Special Functions	No
Mounting Type	Base mounting
Number of Poles	4
Degree of Protection	Front IP00
Terminal Type	Lug terminals
Tightening Torque	acc. IEC 60947-1 50 ... 75 N·m
Mechanical Durability	5000
Lock Type	No

## Technical UL/CSA

Tightening Torque	acc. IEC 60947-1 50 ... 75 N·m
-------------------	--------------------------------

## Certificates and Declarations

ATEX Certificate	No certification needed
Declaration of Conformity - CE	1SCC301211D2701
DNV GL Certificate	1SCC301184D0203
UL Certificate	No certification needed
VDE Certificate	No certification needed

## Container Information

Package Level 1 Units	box 1 piece
Package Level 1 Width	435 mm
Package Level 1 Depth / Length	673 mm
Package Level 1 Height	215 mm
Package Level 1 Gross Weight	43.9 kg
Package Level 1 EAN	6417019582658

---

## Classifications

---

Object Classification Code	Q
ETIM 8	EC000216 - Switch disconnecter
ETIM 9	EC000216 - Switch disconnecter (low voltage)
eClass	V11.1 : 27371403
WEEE Category	4. Large Equipment (Any External Dimension More Than 50 cm)

---

---

## Categories

---

Low Voltage Products and Systems → Switches → Switch Disconnectors

