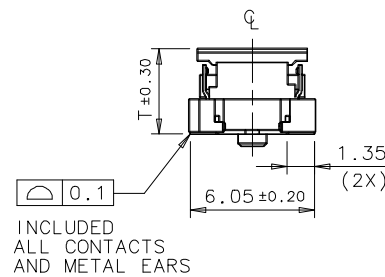
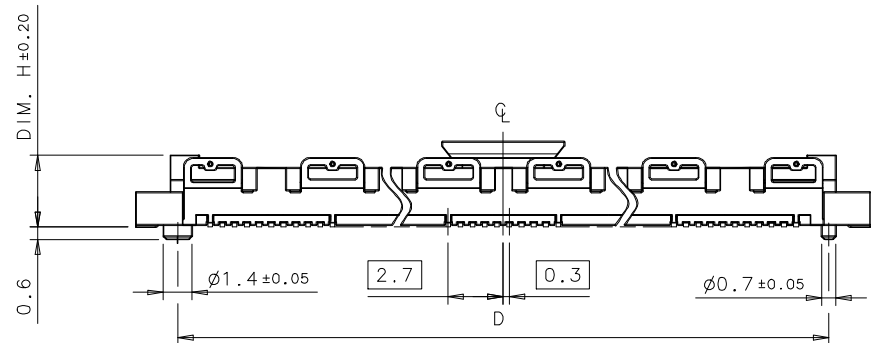
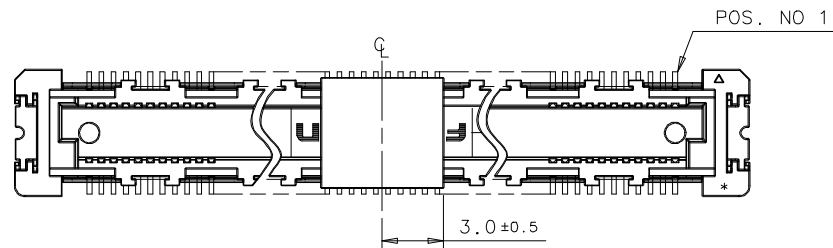


IDEAS GENERATED DRAWING, DON'T CHANGE BY HAND.

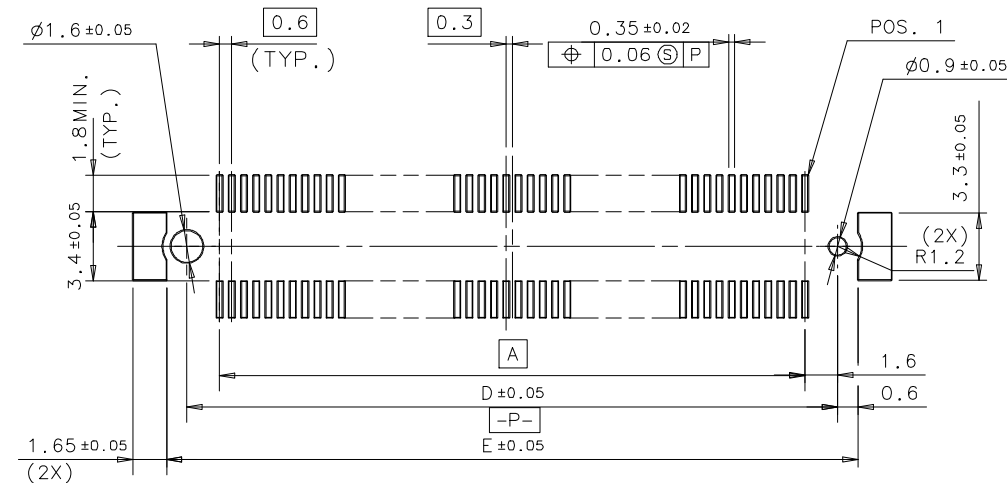
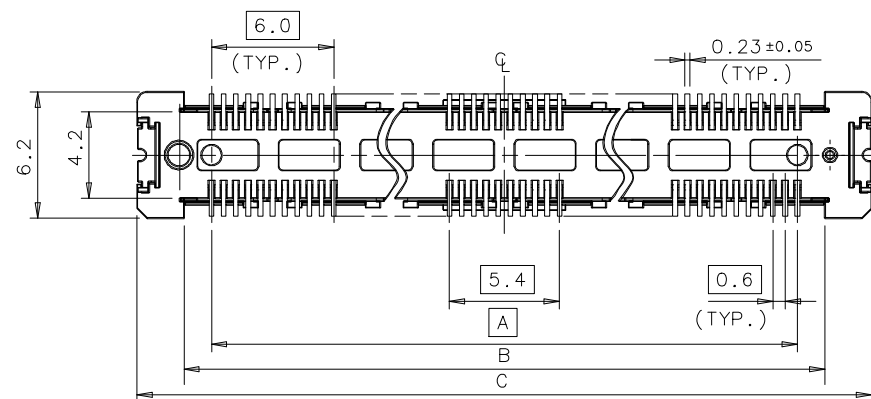
REV.	ECN. NO.	APPD.
A	HC055129	Paul Huang

NOTES:

- DIMENSIONS SHALL BE INTERPRETED PER ANSI Y14.5M-1994.
- PHYSICAL CHARACTERISTICS:
 - 2-1 MATING FORCE: 100g MAX. PER CONTACT
 - 2-2 UNMATING FORCE: 10g MIN. PER CONTACT
 - 2-3 DURABILITY (MATING CYCLES): 50 CYCLES.
 - 2-4 VIBRATION: PASSED MIL-STD-202F, METHOD 201.
 - 2-5 SHOCK: PASSED MIL-STD-202F, CONDITION A.
- ELECTRICAL CHARACTERISTICS:
 - 3-1 CONTACT CURRENT RATING: 0.5 AMPERE D.C. MAX. CONTINUOUSLY.
 - 3-2 DIELECTRIC WITHSTANDING VOLTAGE: 500 VAC FOR 1 MINUTE.
 - 3-3 INSULATION RESISTANCE: 500 MEGAOHMS MIN. (INITIAL), 100 MEGAOHMS MIN. (AFTER).



MATED HEIGHT	DIM. H
4.0, 8.0	3.52
5.0, 9.0	4.52
6.0, 10.0	5.52
7.0, 11.0	6.52
8.0, 12.0	7.52



RECOMMENDED P.C. BOARD LAYOUT

POS.	A	B	C	D	E
160	47.4	50.1	54.7	50.6	51.8
140	41.4	44.1	48.7	44.6	45.8
120	35.4	38.1	42.7	38.6	39.8
100	29.4	32.1	36.7	32.6	33.8
80	23.4	26.1	30.7	26.6	27.8
60	17.4	20.1	24.7	20.6	21.8
40	11.4	14.1	18.7	14.6	15.8

QTSO***A-*121-*F

POS. NO.
 040: 40POS
 060: 60POS
 080: 80POS
 100: 100POS
 120: 120POS
 140: 140POS
 160: 160POS

F: LEAD FREE

PACKAGE
 7: TAPE & REEL
 9: TAPE & REEL W/ CAP

METAL EAR
 1: W/METAL EAR
 1: W/ SHIELDING PLATE

PLATING
 A: 4 u" MIN Au

PROFILE HEIGHT
 1: H=3.52mm, T=4.2mm
 2: H=4.52mm, T=5.2mm
 3: H=5.52mm, T=6.2mm
 4: H=6.52mm, T=7.2mm
 5: H=7.52mm, T=8.2mm

ITEM	DESCRIPTION	Q'TY	MATERIAL	TREATMENT
⑤	CAP	1	THERMOPLASTIC UL 94V-0	MOLD WHITE. (SELECTIVE)
④	SHIELDING PLATE	2	COPPER ALLOY	30 u" MIN NICKEL PLATING OVER ALL.
③	METAL EAR	2	COPPER ALLOY	30 u" MIN TIN PLATING OVER 30 u" MIN NICKEL.
②	CONTACT	***	COPPER ALLOY	NICKEL UNDER PLATING OVER ALL 50 u" MIN TIN PLATING ON TAIL AREA 4u" MIN GOLD PLATING OVER 80u" MIN NICKEL ON CONTACT AREA.
①	HOUSING	1	THERMOPLASTIC UL 94V-0	MOLD WHITE

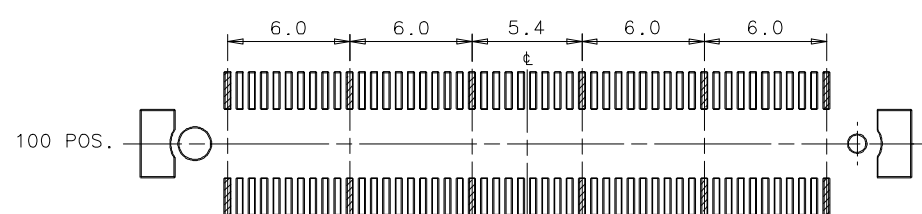
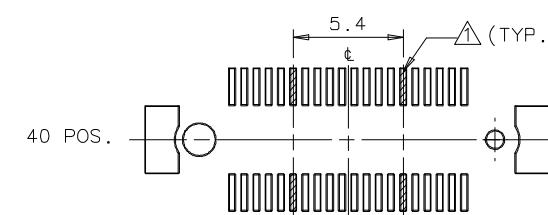
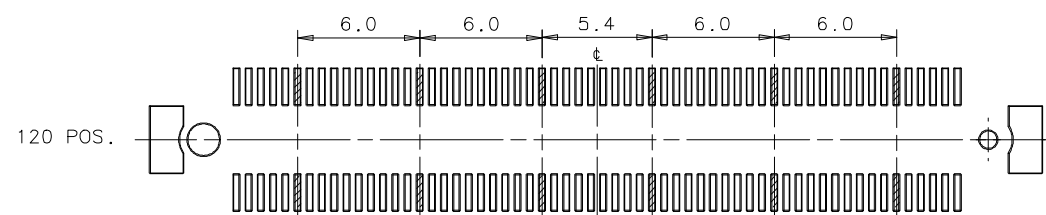
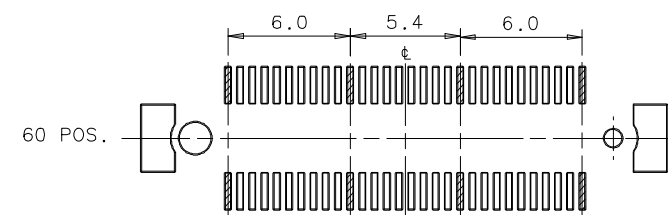
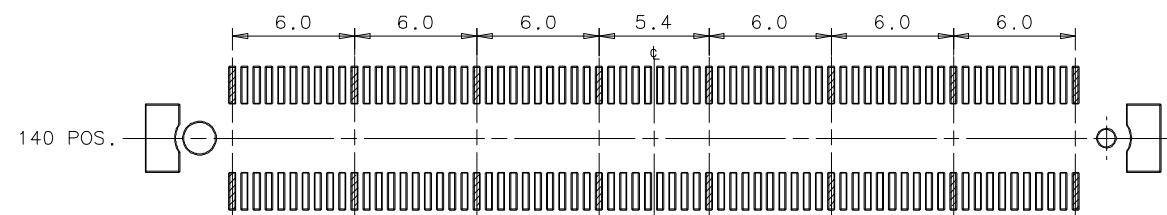
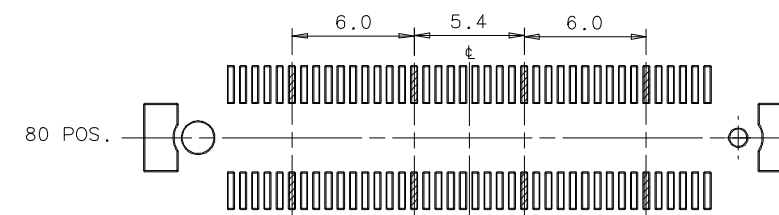
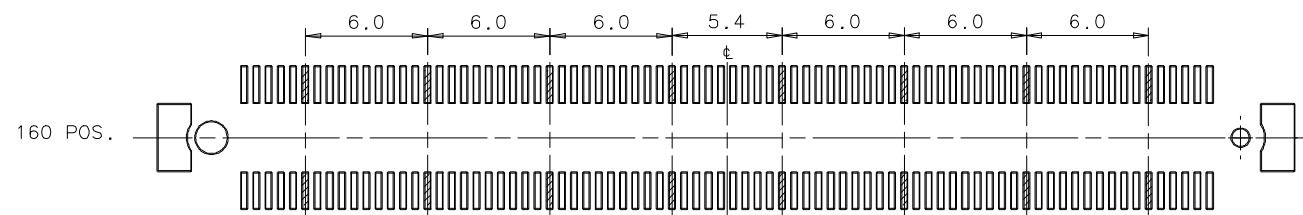
UNITS	mm	NAME (INTENDED USE)	FOXCONN
X. ± 0.50	X. ±	Board to Board Connector	HON HAI PRECISION IND. CO., LTD.
.X ± 0.30	.X ±	0.6mm Pitch Standard Type	TAIPEI, TAIWAN, R.O.C.
.XX ± 0.20	.XX ±	PART NO. (INTENDED USE)	TITLE: CUSTOMER DRAWING (PLUG)
.XXX ±	.XXX ±	QTSO***A-*121-*F	DWG NO.: 323-0000-1121
APPD: Paul Huang 5/29'05		CHKD: Colin Pan 5/28'05	SCALE SHEET REV.
DR: J.H. Shen 5/26'05		N/A	1/2 A

THESE DRAWINGS AND SPECIFICATIONS ARE THE PROPERTY OF HON HAI PRECISION IND. CO., LTD. AND SHALL NOT BE REPRODUCED, COPIED OR USED IN ANY MANNER WITHOUT THE PRIOR WRITTEN CONSENT OF HON HAI PRECISION IND. CO., LTD.

IDEAS GENERATED DRAWING, DON'T CHANGE BY HAND.

REV.	ECN. NO.	APPD.

NOTE:
 THE CROSSHATCH AREA REPRESENTS THE POSITION OF GROUND CIRCUIT.



X. ± 0.50	X. ° ±	UNITS mm	NAME (INTENDED USE) Board to Board Connector 0.6mm Pitch Standard Type	FOXCONN HON HAI PRECISION IND. CO., LTD. TAIPEI, TAIWAN, R.O.C.
.X ± 0.30	.X ° ±	MAT'L	PART NO. (INTENDED USE) QTS0***A-*121-*F	
.XX ± 0.20	.XX ° ±	FINISH	APPD: Paul Huang 5/29'05	TITLE: CUSTOMER DRAWING (RECEPTACLE)
.XXX ±	.XXX ° ±		Q'TY	CHKD: Colin Pan 5/28'05
THESE DRAWINGS AND SPECIFICATIONS ARE THE PROPERTY OF HON HAI PRECISION IND. CO., LTD. AND SHALL NOT BE REPRODUCED, COPIED OR USED IN ANY MANNER WITHOUT THE PRIOR WRITTEN CONSENT OF HON HAI PRECISION IND. CO., LTD.			DR: J.H.Shen 5/26'05	SCALE SHEET REV. N/A 2/2 A