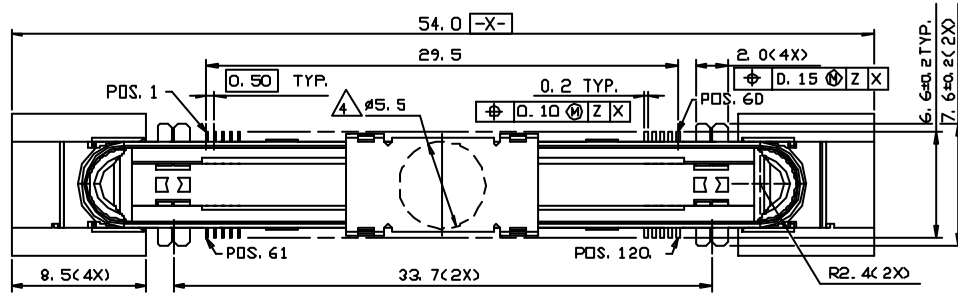


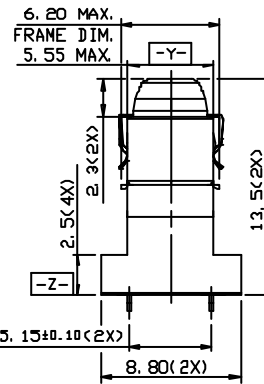
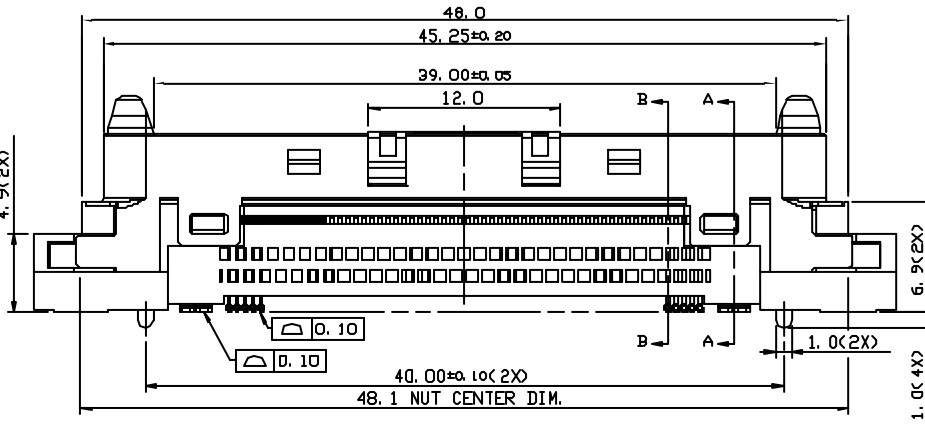
IDEAS GENERATED DRAWING, DON'T CHANGE BY HAND

REV.	ECN. NO.	APPD.
A	HC-02-0832	Max Wu
B	HC-02-2585	Max Wu
C	HC-02-3613	Max Wu
D	HC-02-4400	Max Wu
E	HC-03-2458	Bruce Wu
F	HC-04-4280	Bruce Wu



NOTES:

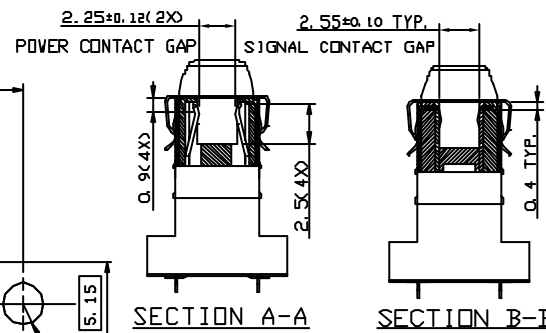
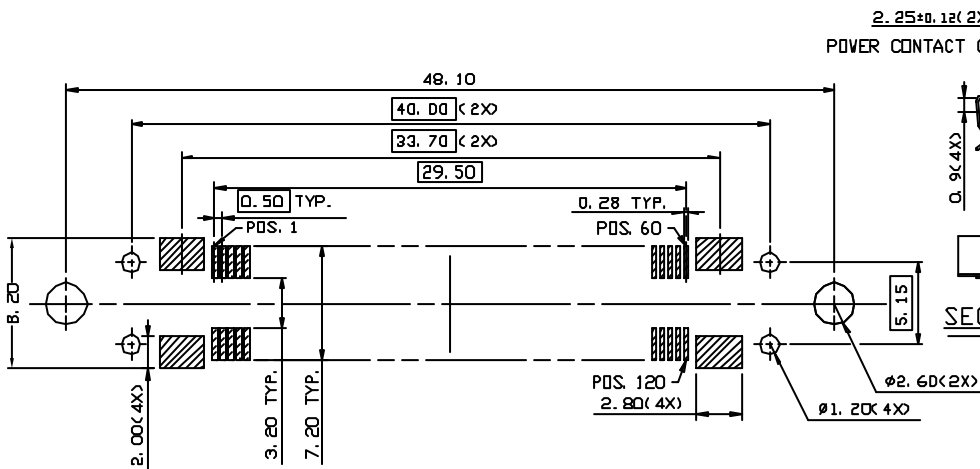
1. SHORT CONTACT POS.: 2,59,62,119.
2. RECOMMENDED SCREW TORQUE FASTENING: 2.00 Kg/cm MAX.
3. CONNECTOR SEATING PLANE: DATUM Z.
4. FLAT SURFACE FOR VACUUM PICK-UP.
5. MATING FORCE: 3.6kgf MAX., UNMATING FORCE: 0.6~3.0kgf .



PART LIST

QLO0603-D603(-6F)

DOCKING CONN. N/A: SOFT TRAY CAP  
 α: VERTICAL TYPE 6F: SOFT TRAY CAP & LEAD FREE  
 ○: PLUG CONTACT  
 60: 60 POS./ROW  
 3: 30u" MIN. GOLD  
 D: 0.5mm PITCH  
 6: PARALLEL 2 ROWS  
 EXTENSION CODE



ITEM	DESCRIPTION	QTY	MATERIAL	FINISH
6	SUCTION PAD	1	STAINLESS STEEL	
5	NUT	2	BRASS	50u" MIN. NICKEL UNDER PLATING OVER ALL.
4	SHELL	1	COPPER ALLOY	50u" MIN. NICKEL UNDER PLATING OVER ALL. 50u" MIN. TIN/LEAD PLATING ON SOLDER TAIL FDR QLO0603-D803; 50u" MIN. TIN PLATING ON SOLDER TAIL FDR QLO0603-D603-6F.
3	HOUSING	1	LCP, BLACK, UL 94V-0	
2	POWER CONTACT	4	COPPER ALLOY	50u" MIN. NICKEL UNDERPLATING OVERALL. 50u" MIN. TIN/LEAD PLATING ON SOLDER AREA FDR QLO0603-D803; 50u" MIN. TIN PLATING ON SOLDER AREA FDR QLO0603-D803-6F.
1	SIGNAL CONTACT	120	PHOSPHOR BRONZE	30u" MIN. GOLD PLATING ON CONTACT AREA.

X.	±N/A	X*	±N/A	UNITS	mm	NAME (INTENDED USE)	FOXCONN
.X	±0.20	.X*	±N/A	MAT'L		SHORT GUIDE LOW DOCKING 120 POS. 0.50 PITCH PLUG CONNECTOR	HON HAI PRECISION IND. CO., LTD. TAIPEI, TAIWAN, R.O.C.
.XX	±0.10	.XX*	±N/A			PART NO. (INTENDED USE)	TITLE:
.XXX	±N/A	.XXX*	±N/A	FINISH		QLO0603-D603(-6F)	CUSTOMER DRAWING
THESE DRAWINGS AND SPECIFICATIONS ARE THE PROPERTY OF HON HAI PRECISION IND. CO., LTD. AND SHALL NOT BE REPRODUCED COPIED OR USED IN ANY MANNER WITHOUT THE PRIOR WRITTEN CONSENT OF HON HAI PRECISION IND. CO., LTD.						APPD: Bruce Wu 05/11/04	DWG NO.: 353-0100-057
						CHKD: Chun-Sheng Li 05/11/04	SCALE SHEET REV.
						DR: F.Zhu 5/11/04	1/1 F