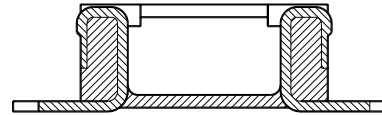
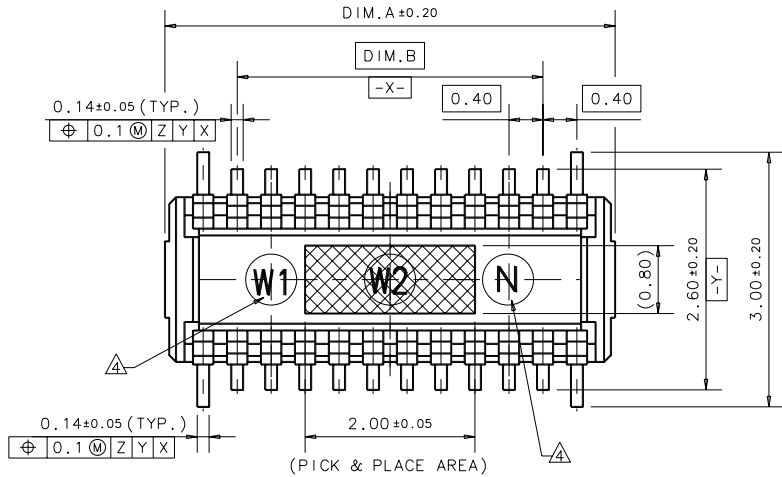


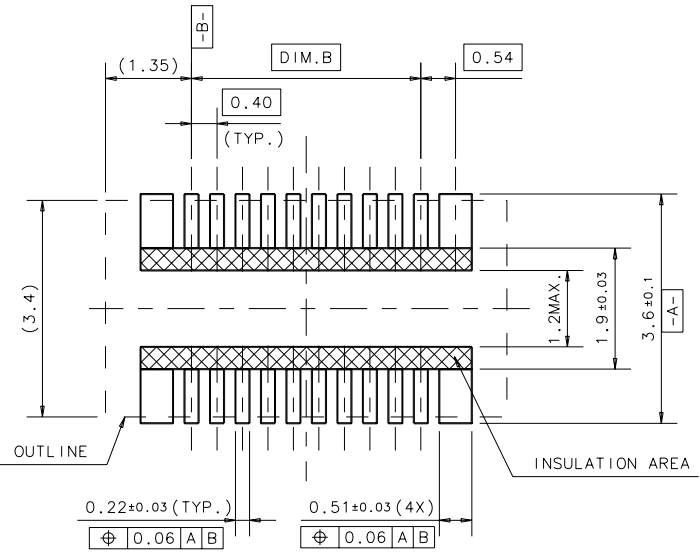
IDEAS GENERATED DRAWING, DON'T CHANGE BY HAND.

REV.	ECN. NO.	APPD.
A	BC-07-7036899	John Chang
AX1		

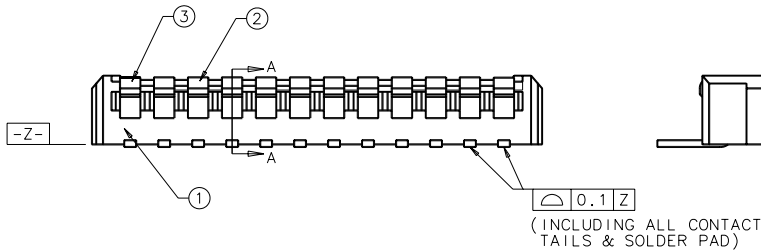
- NOTES:
1. DIMENSION SHOULD BE INTERPRETED PER ASME Y14.5M-1994.
 2. ELECTRICAL CHARACTERISTICS:
 - 2-1. CONTACT CURRENT RATING: 0.4A MAX. PER CONTACTS.
 - 2-2. INSULATION RESISTANCE: 100 MEGAOHMS MIN. AT 500 VDC.
 - 2-3. DIELECTRIC WITHSTANDING VOLTAGE: 250 VAC RMS AT 60HZ FOR 1 MINUTE.
 - 2-4. LOW LEVEL CONTACT RESISTANCE: 85mΩ MAX. (BEFORE & AFTER ENVIRONMENT TEST)
 3. MECHANICAL CHARACTERISTICS:
 - 3-1. CONTACT RETENTION FORCE: 0.03kgf MIN. PER CONTACTS.
 - 3-2. INSERTION FORCE: 2.0kgf MAX.
 - 3-3. EXTRACTION FORCE: 0.15kgf MIN.
 - 3-4. DURABILITY: 50 MATING CYCLES.
 - 3-5. OPERATING TEMPERATURE: 0°C TO +75°C.
 4. THE DATE CODE (W1 & W2: WEEK) AND CAVITY NO. ARE LOCATED APPROXIMATELY.
 5. PLEASE CONTACT FOXCONN SALES REPRESENTATIVE TO VERIFY PRODUCT DETAIL & AVAILABILITY.



SECTION A-A
(SCALE 24:1)



RECOMMENDED PCB LAYOUT
TOLERANCE ±0.05



(INCLUDING ALL CONTACT TAILS & SOLDER PAD)

③	HOLD DOWN	COPPER ALLOY	4	NICKEL UNDER PLATING. TIN PLATING ON THE SOLDER AREA.
②	CONTACT	COPPER ALLOY	N	NICKEL UNDER PLATING. GOLD PLATING ON THE CONTACT AREA. GOLD FLASH ON THE SOLDER AREA.
①	HOUSING	THERMOPLASTIC	1	COLOR: BLACK ,UL94V-0
ITEM	DESCRIPTION	MATERIAL	QT'Y	REMARK

QG1364451Y-X10-7F	64	14.1	12.4
QG1340451Y-X10-7F	40	9.3	7.6
QG1330451Y-X10-7F	30	7.3	5.6
QG1322451Y-X10-7F	22	5.7	4.0
QG1320451Y-X10-7F	20	5.3	3.6
PART NO.	POS. NO.(N)	DIM. A	DIM. B

X. ± 0.30	X. ° ± 3°	UNITS mm	NAME (INTENDED USE) 0.4P MH=1.0MM PLUG BTB CONN.	FOXCONN HON HAI PRECISION IND. CO.,LTD. TAIPEI, TAIWAN, R.O.C. TITLE: CUSTOMER DRAWING OF 64P MH=1.0MM, PLUG BTB CONNECTOR DWG NO.: 357-0000-1159
.X ± 0.25	.X ° ±	MAT'L	PART NO. (INTENDED USE) QG13**451Y-X10-7F	
.XX ± 0.20	.XX ° ±	N/A	APPD: John J. Chang 9/10'07	
.XXX ±	.XXX ° ±	FINISH N/A	CHKD: Arong Chuang 9/10'07	
THESE DRAWINGS AND SPECIFICATIONS ARE THE PROPERTY OF HON HAI PRECISION IND. CO., LTD. AND SHALL NOT BE REPRODUCED, COPIED OR USED IN ANY MANNER WITHOUT THE PRIOR WRITTEN CONSENT OF HON HAI PRECISION IND. CO., LTD.		Q'TY	DR: JAMES LUNG 9/10'07	SCALE SHEET REV. N/A 1/1 AX1