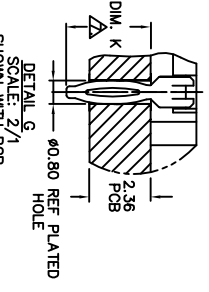
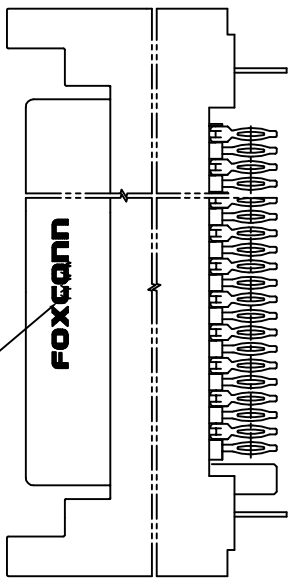
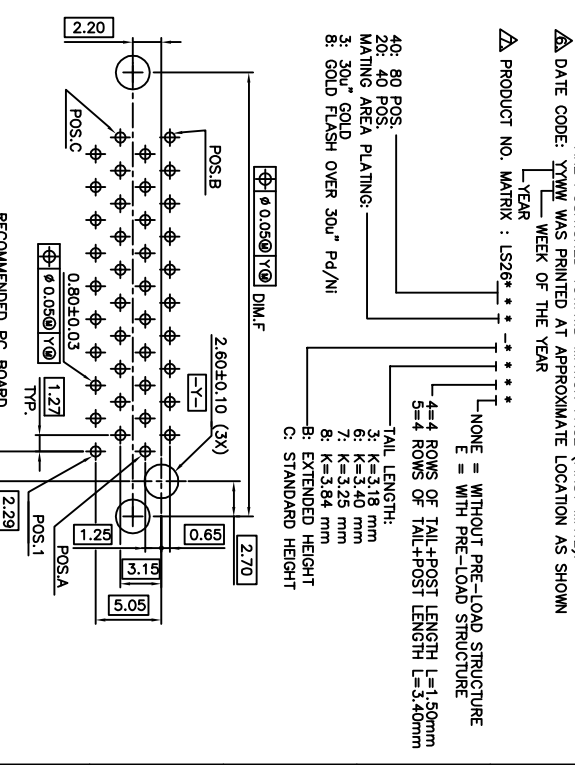
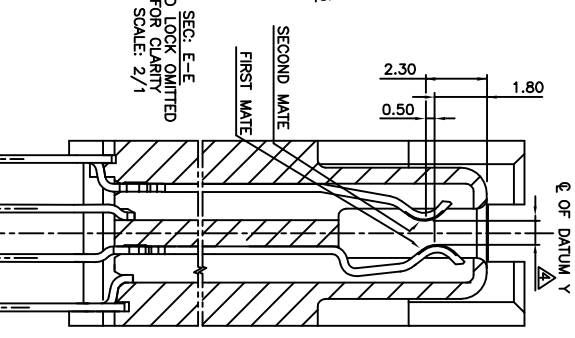
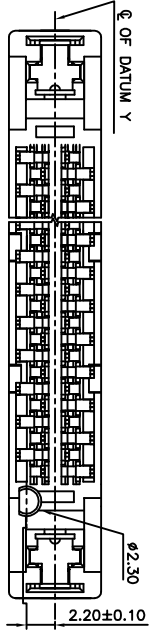
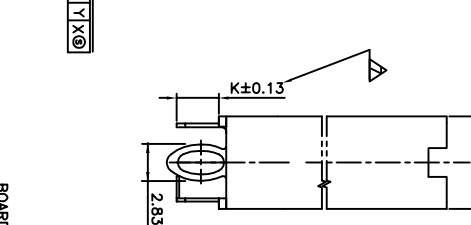
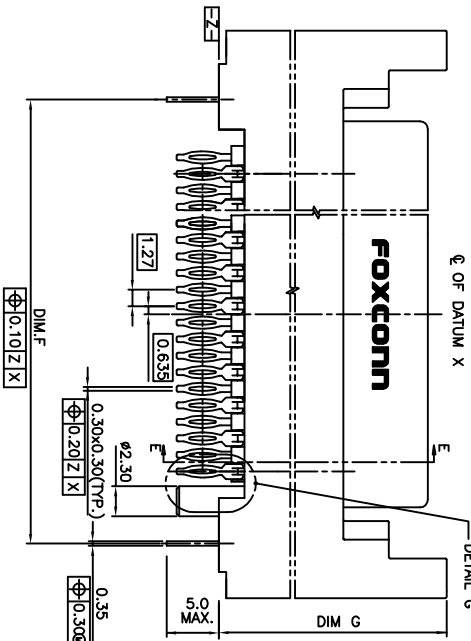
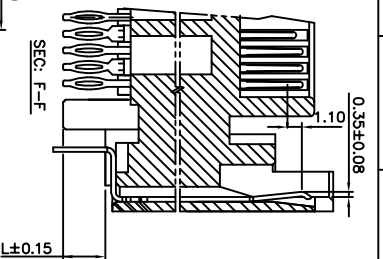
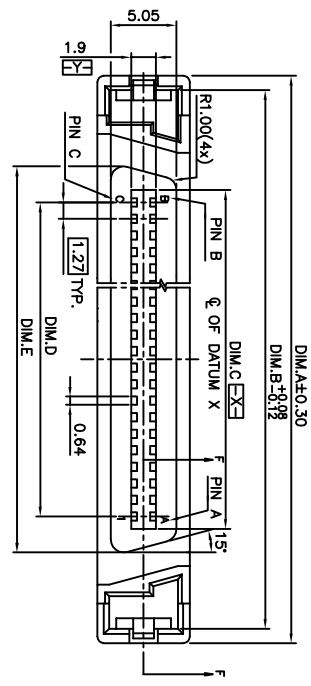


REV.	ECN.	NO.	APPD.
A	IC020147		Yihsin Chen 1/11/02
B	IC0212574		Yihsin Chen 12/21/02
C	BC0368914		Michael Lai 7/11/03

- NOTES:
- DIMENSION SHALL BE INTERPRETED PER ANSI Y14.5M-1994
 - FINISHED PART SHALL MEET THE REQUIREMENT OF PRODUCT SPECIFICATION 303-0000-984
 - MATERIAL: 303-0000-983 :
CONTACT : PHOSPHOR BRONZE, NICKEL PLATING OVER ALL AT 50 TO 90µ. SOLDER AREA PLATING: 100µ MIN. TIN/LEAD MATING AREA PLATING: GOLD PLATING BOARD LOCK: PHOSPHOR BRONZE, 50 TO 90µ NICKEL OVERALL: 100 µ" MIN. TIN/LEAD OVER NICKEL HOUSING : POLYESTER, UL94V-0 RATED, BLACK.
CONNECTOR WILL ACCOMMODATE MATING P.C.B. OF 1.60±0.07 mm THICKNESS AND 34 ARE POSITIONED AWAY FROM MATION FACE (SECOND MATE).
FOR P/N LS2620*-***CONTACTS 1 THROUGH 20, 24, 25, 27, 28, 30, 31, 33 CONTACTS 21, 22, 23, 26, 29, 32 AND 35 THROUGH 40 ARE POSITIONED TOWARD MATION FACE (FIRST MATE).
CONTACTS 1, 36 THRU 43, 45, 46 AND 75 THRU 80 ARE POSITIONED TOWARD MATION FACE (FIRST MATE).



LS26403-C**	80/STANDARD	40	41	80	40	69.00	68.80	51.44	49.53	55.07	59.51	11.50
LS26203-C** <td>40/STANDARD</td> <td>20</td> <td>21</td> <td>40</td> <td>20</td> <td>43.60</td> <td>41.40</td> <td>26.04</td> <td>24.13</td> <td>29.67</td> <td>34.11</td> <td>11.50</td>	40/STANDARD	20	21	40	20	43.60	41.40	26.04	24.13	29.67	34.11	11.50
LS26403-B** <td>80/EXTENDED</td> <td>40</td> <td>41</td> <td>80</td> <td>40</td> <td>69.00</td> <td>68.80</td> <td>51.44</td> <td>49.53</td> <td>55.07</td> <td>59.51</td> <td>17.50</td>	80/EXTENDED	40	41	80	40	69.00	68.80	51.44	49.53	55.07	59.51	17.50
LS26203-B** <td>40/EXTENDED</td> <td>20</td> <td>21</td> <td>40</td> <td>20</td> <td>43.60</td> <td>41.40</td> <td>26.04</td> <td>24.13</td> <td>29.67</td> <td>34.11</td> <td>17.50</td>	40/EXTENDED	20	21	40	20	43.60	41.40	26.04	24.13	29.67	34.11	17.50

PART NO.	POS / HEIGHT	A	B	C	DIM.A	DIM.B	DIM.C	DIM.D	DIM.E	DIM.F	DIM.G
X±	X± 1°										
X±	0.25										
XX±	0.20										
XXX±	0.20										

UNITS	mm
MATL	SCA-2
FINISH	LS26 SERIES
Q'TY	

APPD.	CHKD.	DR.	DWG NO.	SCALE	SHEET	REV.
Yihsin Chen 1/11/02	Wolfe Liu 1/10/02	D. JONES 7/10/00	303-0000-780	N/A	1/2	C

THESE DRAWINGS AND SPECIFICATIONS ARE THE PROPERTY OF HON HAI PRECISION IND. CO., LTD. AND SHALL NOT BE REPRODUCED, COPIED OR USED IN ANY MANNER WITHOUT THE WRITTEN PERMISSION OF HON HAI PRECISION IND. CO., LTD.

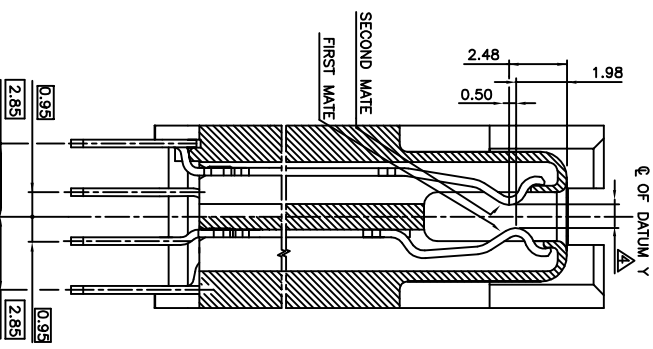
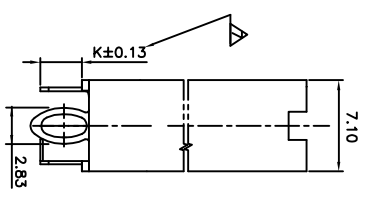
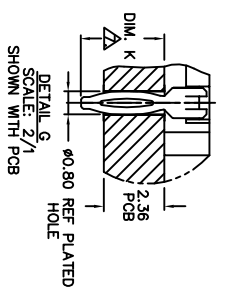
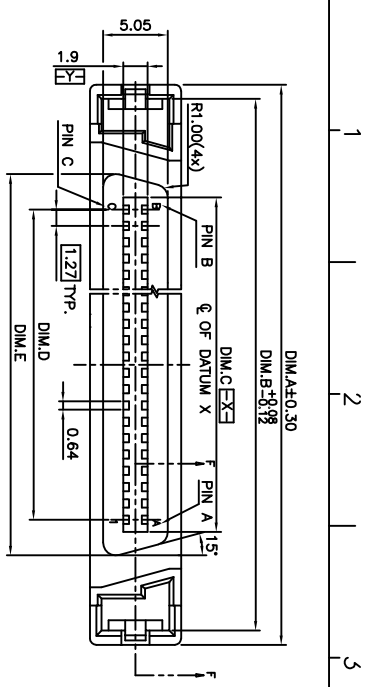
APPD.: Yihsin Chen 1/11/02
CHKD.: Wolfe Liu 1/10/02
DR.: D. JONES 7/10/00

DWG NO.: 303-0000-780
SCALE: N/A
SHEET: 1/2
REV.: C

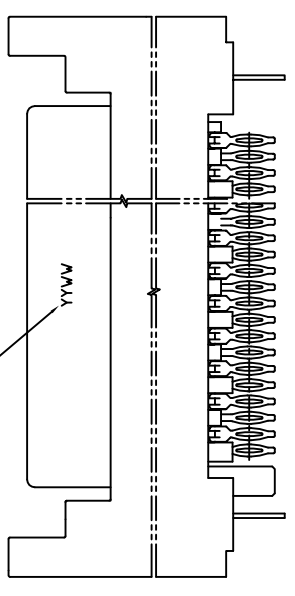
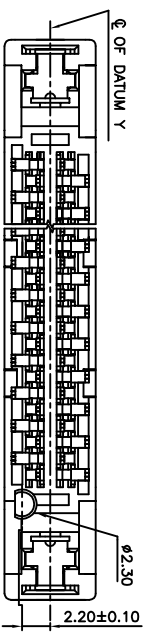
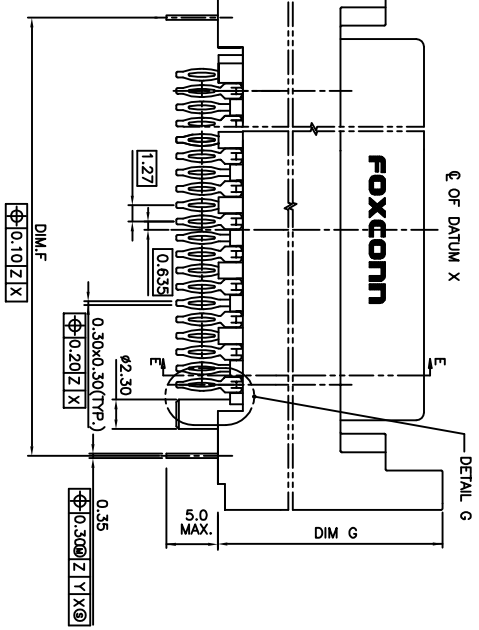
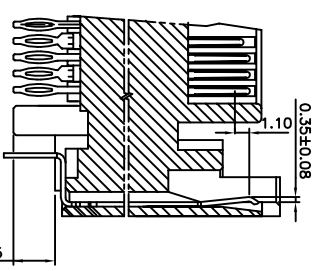
TITLE: CUSTOMER DRAWING

FOXCONN
HON HAI PRECISION IND. CO., LTD.
TAIPEI, TAIWAN, R.O.C.

REV.	ECN.	NO.	APPD.



SEC: F-E
BOARD LOCK OMITTED
FOR CLARITY
SCALE: 2/1



PART NO.	POS	HEIGHT	N	A	B	C	DIM.A	DIM.B	DIM.C	DIM.D	DIM.E	DIM.F	DIM.G
LS26403-C**E	80	STANDARD	40	41	80	40	69.00	66.80	51.44	49.53	55.07	58.51	11.50
LS26203-C**E	40	STANDARD	20	21	40	20	43.80	41.40	26.04	24.13	29.67	34.11	11.50
LS26403-B**E	80	EXTENDED	40	41	80	40	69.00	66.80	51.44	49.53	55.07	58.51	17.50
LS26203-B**E	40	EXTENDED	20	21	40	20	43.80	41.40	26.04	24.13	29.67	34.11	17.50

X±	X± 1°	UNITS	mm
X± 0.25	X±	MATL	
.XX± 0.20	.XX±	FINISH	
.XXX± 0.20	.XXX±	QTY	

THESE DRAWINGS AND SPECIFICATIONS ARE THE PROPERTY OF HON HAI PRECISION IND. CO., LTD. AND SHALL REMAIN THE PROPERTY OF HON HAI PRECISION IND. CO., LTD. IF COPIED OR USED IN ANY MANNER WITHOUT THE PRIOR WRITTEN CONSENT OF HON HAI PRECISION IND. CO., LTD.

NAME (INTENDED USE)	SCA-2	HON HAI PRECISION IND. CO., LTD. TAIPEI, TAIWAN, R.O.C.
PART NO. (INTENDED USE)	LS26 SERIES	CUSTOMER DRAWING
APPD:	Yhsin Chen 1/1/02	DWG NO.: 303-0000-780
CHKD:	Wofe Liu 1/10/02	SCALE SHEET REV.
DR:	D. JONES 7/10/00	N/A 2/2 C

1 2 3 4 5 6 7 8

A B C D E