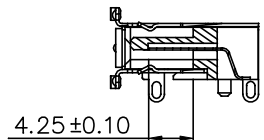
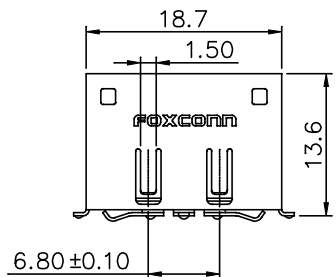


REV.	ECN.	NO.	APPD.
A	HC056955		Yusan7/28'05
B	BC077051360		Yusan
C	BC087004697		Yusan
D	BC-14-0023057		Shi-wei Hsiao

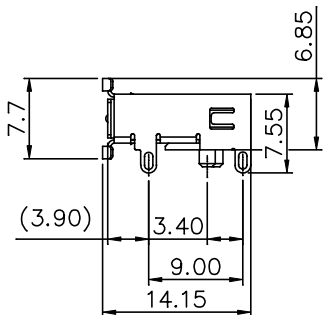
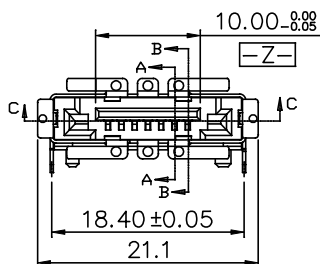
NOTES:

1. DIMENSION SHALL BE INTERPRETED PER ASME Y14.5M-1994
2. SPEC. OF PROD. ARE SHOWN ON DRAWING 303-0300-1380
3. MATERIALS OF PARTS ARE SHOWN ON DRAWING 303-0500-1380
4. DATE CODE: PLEASE REFER TO FOXCONN'S DOC. "SQ-3B0-070"
5. HARMFUL MATERIAL CONTROL PLEASE FOLLOW FOXCONN'S DOC. "EPI12"
6. PRODUCT NO. MATRIX : SEE MATERIAL "303-0500-1380"
7. PLEASE CONTACT FOXCONN SALES REPRESENTATIVE TO VERIFY PRODUCT DETAILS & AVAILABILITY.
8. PRODUCT NO. MATRIX: LD 7 1 07 * - S 7 1 * *

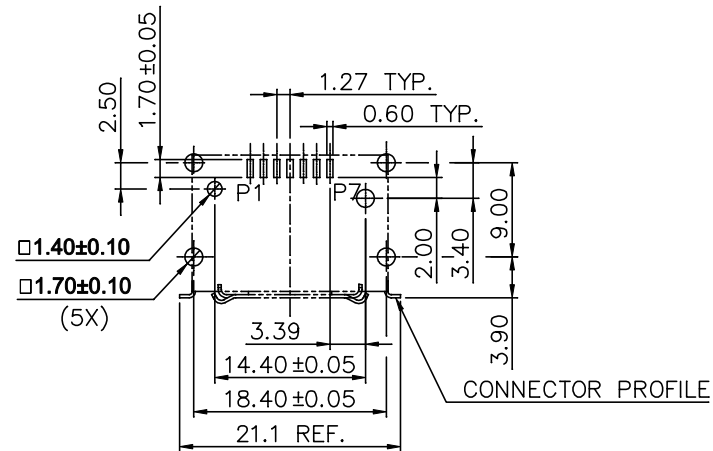
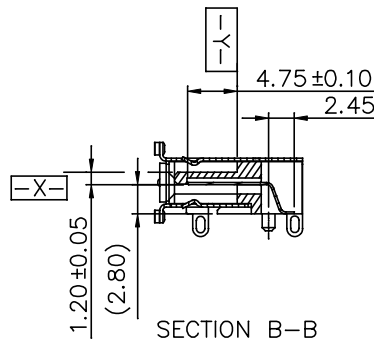
SERIAL ATA _____ LD 7 1 07 * - S 7 1 * * _____ PACKAGE TYPE
 EXTERNAL _____ 1/NONE=TRAY
 R/A SMT _____ 3=TAPE&REEL
 NO. OF POS. _____ HOUSING MATERIAL
 07 = 7 POS. _____ L=LCP, BLACK
 CONTACT AREA PLATING. _____ MODIFY CODE(1,)
 F: GOLD FLASH WITH RoHS COMPLIANCE. _____ OUTER SHAPE
 H: GOLD PLATING 30u" MIN. WITH RoHS COMPLIANCE. _____ 7=SHIELDING&REVERSE
 V: GOLD PLATING 15u" MIN. WITH RoHS COMPLIANCE. _____ S-ATA SERIES



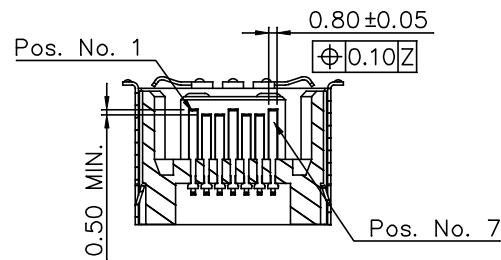
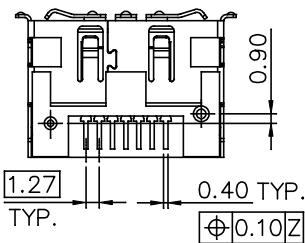
SECTION A-A



SECTION B-B



RECOMMENDED PCB LAYOUT
 PCB THICKNESS 1.60 mm

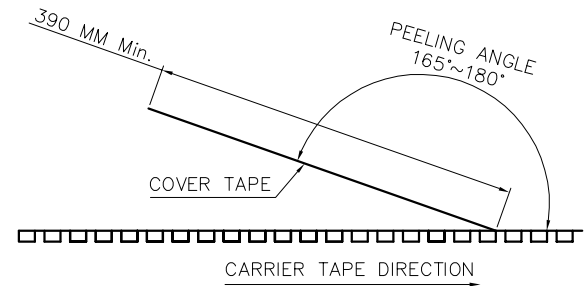
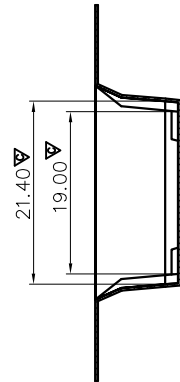
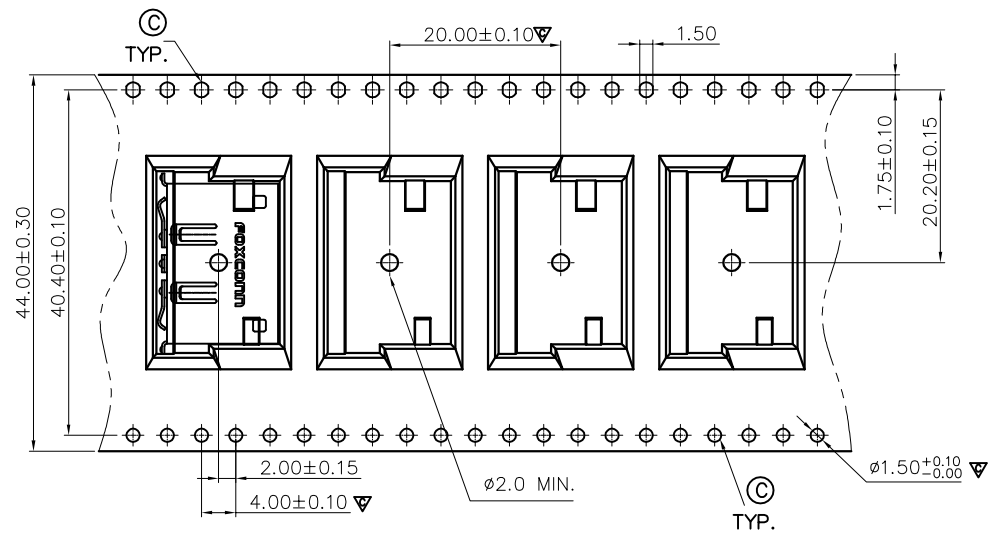


SECTION C-C

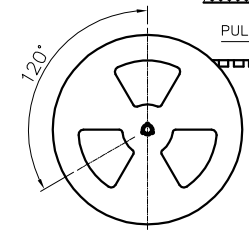
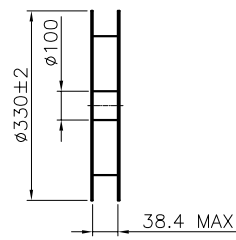
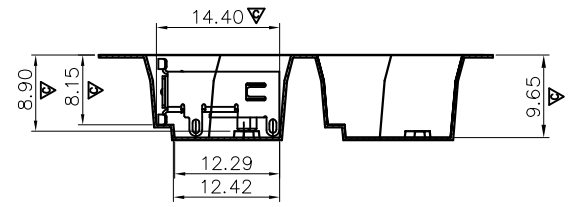
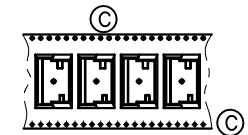
X.±	X°.±	UNITS	mm	NAME(INTENDED USE)	FOXCONN FOXCONN INTERCONNECT TECHNOLOGY LIMITED. CLASS: CONFIDENTIAL SECRET GENERAL
.X± 0.25	.X°.±	MAT'L		SERIAL ATA	
.XX± 0.20	.XX°.±			PART NO.(INTENDED USE)	TITLE: CUSTOMER DRAWING R/A, SMT, 7 POS., PLUG
.XXX±	.XXX°.±	FINISH		LD7107*-S71**	DWG NO.: 303-0000-1380
THESE DRAWINGS AND SPECIFICATIONS ARE THE PROPERTY OF FOXCONN INTERCONNECT TECHNOLOGY LIMITED AND SHALL NOT BE REPRODUCED, COPIED OR USED IN ANY MANNER WITHOUT THE PRIOR WRITTEN CONSENT OF FOXCONN INTERCONNECT TECHNOLOGY LIMITED.				APPD: Shih-Wei Hsiao	CHKD: Yusan Hsiao DR: Lisa.Wang 12/19,14
				Q'TY	
					SCALE SHEET REV. N/A 1/2 DX1

PART NO. LD7107*-S71**

REV.	ECN.	NO.	APPD.
A	BC077056093		Yusan
B	BC087130035		Jake W.Y
C	BC-14-0022934		Shi-wei Hsiao



PEEL FORCE TEST



PAKING DIRECTION BEFORE ASSY

NOTES:

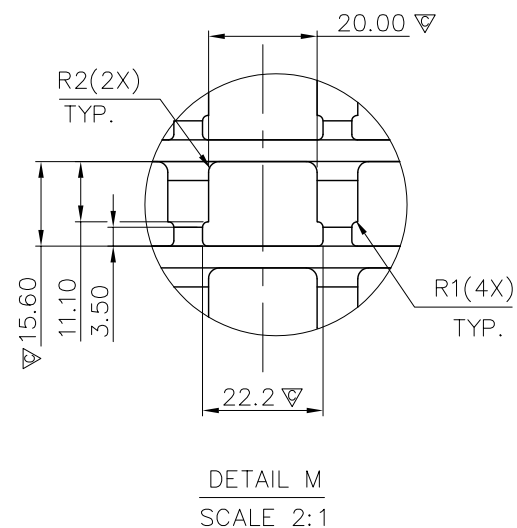
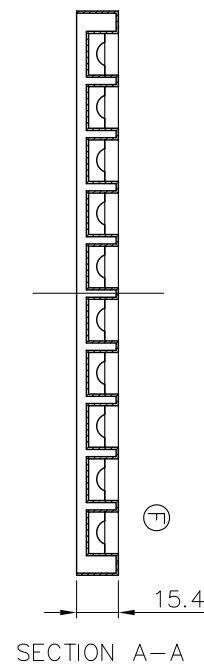
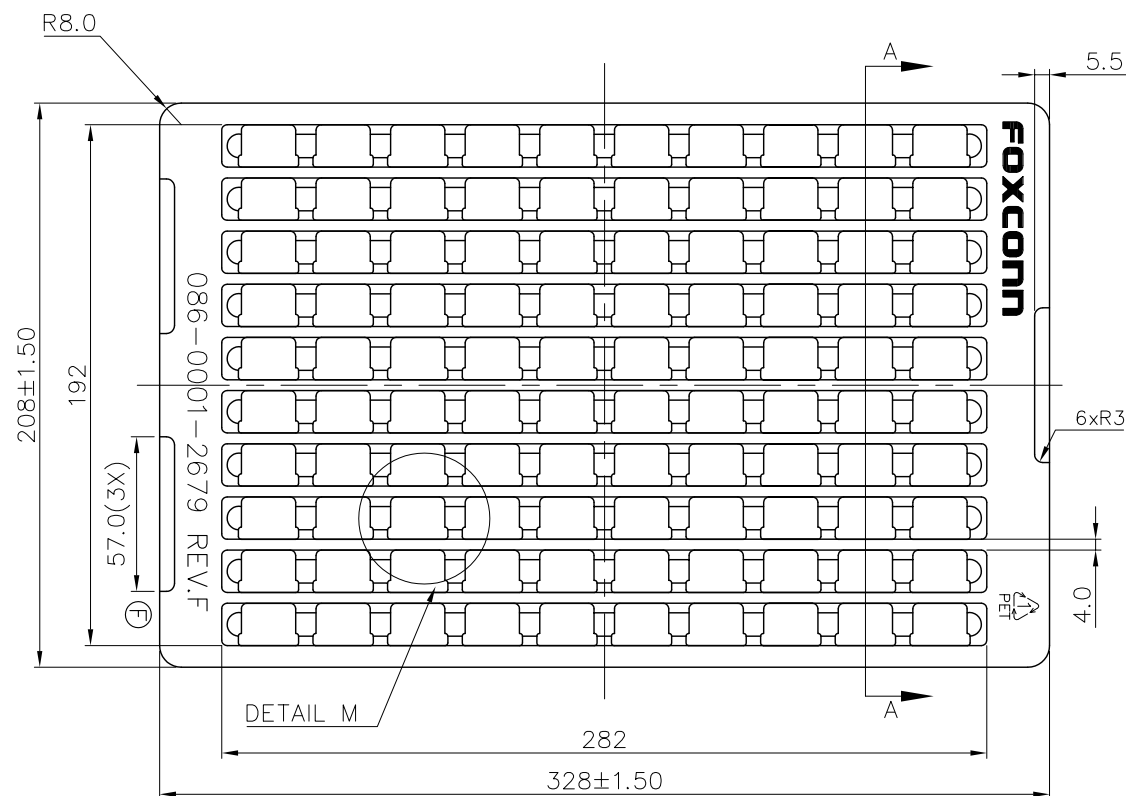
1. DIMENSIONS SHALL BE INTERPRETED PER ASME Y14.5M-1994
2. 10 SPROCKET HOLE PITCH CUMULATIVE TOLERANCE ± 0.20 .
3. CARRIER CAMBER IS WITHIN 1 mm IN 250mm.
4. MATERIAL: BLACK CONDUCTIVE POLYSTYRENE ALLOY
5. ALL DIMENSIONS MEETEIA-481-C REQUIREMENTS.
6. THICKNESS: 0.50 ± 0.05 mm.
7. PACKING LENGTH PER 22" REEL : 17.5 METERS.
8. COMPONENT LOAD PER 13" REEL : 250 Pcs.
9. HARMFUL MATERIAL CONTROL PLEASE FOLLOW DOC. "EPI12".
10. PEEL FORCE : $10 \sim 130$ g / TEST LENGTH 500mm MIN.

PART NO. 086-0001-9066

X.±	X.±	UNITS	mm	NAME(INTENDED USE)	FOXCONN
.X± 0.20	.X±	MAT'L		SERIAL ATA	HON HAI PRECISION IND. CO.,LTD. TAIPEI, TAIWAN, R.O.C.
.XX± 0.10	.XX±			PART NO.(INTENDED USE)	TITLE: TAPE&REEL DRAWING
.XXX±	.XXX±	FINISH		LD7107*-S71**	R/A, SMT, 7 POS., PLUG
THESE DRAWINGS AND SPECIFICATIONS ARE THE PROPERTY OF HON HAI PRECISION IND. CO., LTD. AND SHALL NOT BE REPRODUCED, COPIED OR USED IN ANY MANNER WITHOUT THE PRIOR WRITTEN CONSENT OF HON HAI PRECISION IND. CO., LTD.				APPD: Shi-wei Hsiao	DWG NO.: 086-0000-9066
				CHKD: Yusan Hsiao	
				DR: Lisa Wang 05/09'14	SCALE SHEET REV. N/A 1/1 C

- NOTES : UNLESS OTHERWISE SPECIFIED
1. MATERIAL : PET(TRANSPARENT) , THICKNESS $0.8 \pm 0.05\text{mm}$ ▽
 2. DIMENSIONS SHALL BE INTERPRETED PER ASME Y14.5M-1994
 3. THE TEXT IS APPROXIMATELY LOCATED AS SHOWN , AND THE DEPTH IS ABOUT 2.0mm
 4. THE RECOMMENDED DRAFTING ANGLE IS 5°
 5. DIM. MARKED ▽ TO BE CONTROLLED QC.
 6. THE RADIUS OF INNER CORNER NOT SPECIFIED IS 2mm MAX.
 7. HARMFUL MATERIAL CONTROL PLEASE FOLLOW FOXCONN'S DOC. "EPI12".

REV.	ECN. No.	APPD.
A	HC0411749	Ady Zhou 12/17'04
B	HC059320	YuSan 9/17'05
C	BC07700895	YuSan
D	BC077079015	YuSan
E	BC087152866	Jake W.Y
F	BC097074998	Yihsin Chen



X.± 1.00	X°.±	UNITS mm	NAME(INTENDED USE)	FOXCONN HON HAI PRECISION IND. CO.,LTD. TAIPEI, TAIWAN, R.O.C.	
.X± 0.50	.X°.±	MAT'L	S-ATA SERIES		
.XX± 0.25	.XX°.±	FINISH	PART No.(INTENDED USE)	TITLE:	
.XXX±	.XXX°.±		LD7* SERIES	PACKING TRAY DRAWING	
THESE DRAWINGS AND SPECIFICATIONS ARE THE PROPERTY OF HON HAI PRECISION IND. CO., LTD. AND SHALL NOT BE REPRODUCED, COPIED OR USED IN ANY MANNER WITHOUT THE PRIOR WRITTEN CONSENT OF HON HAI PRECISION IND. CO., LTD.			APPD: Yihsin Chen	DWG No.: 086-0000-2679	
			CHKD: Wolfe Liu		
			DR: Sophea Chen _{7/13'09}		
Q'TY			SCALE	SHEET	REV.
			1:2	1/4	F

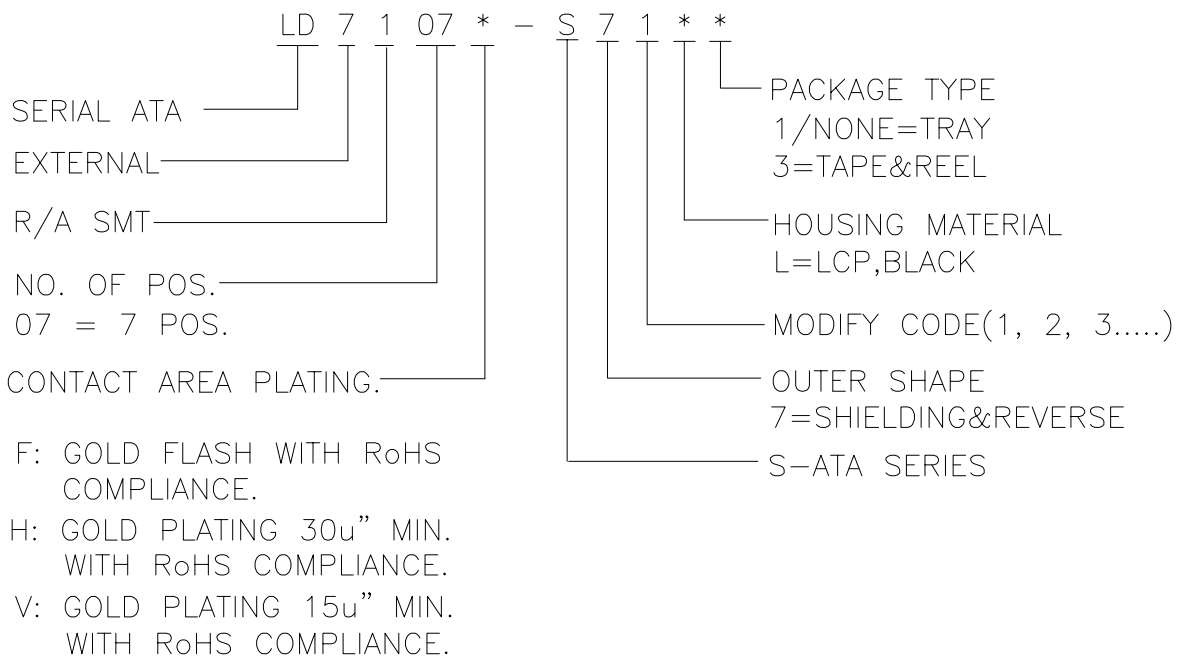
P/N. 086-0001-2679

ITEM	DESC.	Q'TY	MATERIAL	TREATMENT	REMARK
1	HOUSING	1	HIGH TEMP. THERMO-PLASTIC,UL 94V-0		
2	CONTACT	SEE NOTE BELOW	COPPER ALLOY	A) NICKEL PLATING OVER ALL THICKNESS : 50 u" MIN. B) TIN PLATING OVER NICKEL THICKNESS : 100 u" MIN ON SOLDER AREA. C) GOLD PLATING OVER NICKEL ON CONTACT AREA.	
3	SHIELD	1	COPPER ALLOY	A) NICKEL UNDERPLATING THICKNESS: 50 u" MIN. OVER ALL. B) TIN PLATING OVER NICKEL THICKNESS : 80~200 u" ON SOLDER AREA.	

NOTE :

1.HARMFUL MATERIAL CONTROL PLEASE FOLLOW FOXCONN'S DOC. "EPI12".

2.PRODUCT NO. MATRIX:



FOXCONN HON HAI PRECISION IND. CO.,LTD.
TAIPEI, TAIWAN, R.O.C.

APPD. : Yusan	TITLE : MATERIAL SHEET R/A, SMT, REVERSE TYPE, PLUG
CHKD. : Steven	PROD. SERIES : LD7107*-S71**
DR. : Mackel Wu 7/30'07	DWG. NO : 303-0500-1380
	REV. : B SHEET : 1/1

B	BC077051411	Yusan
A	HC056957	Yusan 7/28'05
REV.	ECN NO.	APPD.

SPECIFICATIONS :

1. MATERIAL AND FINISH :

1-1. HOUSING :

HIGH TEMP. THERMOPLASTIC , UL94V-0 .

1-2. CONTACT :

COPPER ALLOY, NICKEL PLATING OVER ALL, THICKNESS 50u" MIN.,
TIN OR TIN/LEAD PLATING OVER NICKEL, THICKNESS 100u"MIN. ON
SOLDER AREA, GOLD PLATING OVER NICKEL ON CONTACT AREA.

1-3. SHIELD:

COPPER ALLOY, NICKEL UNDERPLATING. THICKNESS 50u" MIN.
ON SOLDER AREA. TIN OR TIN/LEAD PLATING OVER NICKLE. THICKNESS
80~200 u" ON SOLDER AREA.

1-4. HARMFUL MATERIAL CONTROL PLEASE FOLLOW FOXCONN'S DOC. NO. "EPI12"

2. PERFORMANCE :

2-1. CURRENT RATING : 1.5 Amps MAX. PER PIN.

2-2. OPERATING TEMPERATURE : -55°C TO +85°C.

3. ELECTRICAL :

3-1. LOW LEVEL CONTACT RESISTANCE(DRY CIRCUIT) : 30 MILLIOHMS MAX. INITIAL.

3-2. DIELECTRIC WITHSTANDING VOLTAGE : 500 VAC. AT SEA LEVEL.

3-3. INSULATION RESISTANCE : 1000 MEGAOHMS MIN. INITIAL.

4. MECHANICAL:

4-1. INSERTION FORCE: EIA-364-13, 40N MAX..

4-2. REMOVAL FORCE: EIA-364-13, 10N MIN..

4-3. DURABILITY: 2500 CYCLES

4-4. RETENTION FORCE: 3N MIN. PER PIN.

5. ENVIRONMENTAL:

5-1. PHYSICAL SHOCK: PASS EIA-364-27, CONDITION H.

5-2. VIBRATION: PASS EIA-364-28, CONDITION V TEST LETTER A.

5-3. HUMIDITY: PASS EIA-364-31, METHOD II TEST CONDITION A.

FOXCONN HON HAI PRECISION IND. CO.,LTD.
TAIPEI, TAIWAN, R.O.C.

APPD. : Yusan7/28'05	TITLE : SPECIFICATION, R/A SMT, PLUG, REVERSED TYPE, SATA II
CHKD. :	PROD. SERIES : LD7107*-S71
DR. : Alex Kee 7/13'05	DWG. NO : 303-0300-1380
	REV. : A SHEET : 1/1

A	HC056956	Yusan7/28'05
REV.	ECN NO.	APPD.