

SPECIFICATIONS

Mechanical

Insertion Force: 20N max.
Withdrawal Force: 4N min.
Durability: 500 Cycles.

Electrical

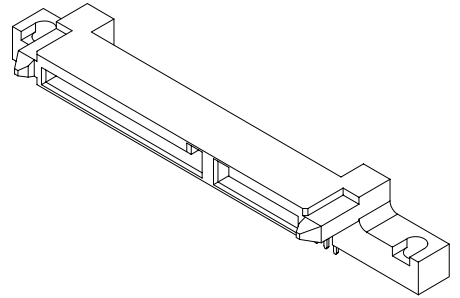
Voltage Rating: 250V.
Current Rating: 1.5A per pin min.
Contact Resistance: 30 mΩ max. Δ15 mΩ max. after stress
Dielectric Withstanding Voltage: 500V AC.
Insulation Resistance: 1000MΩ min.

Physical

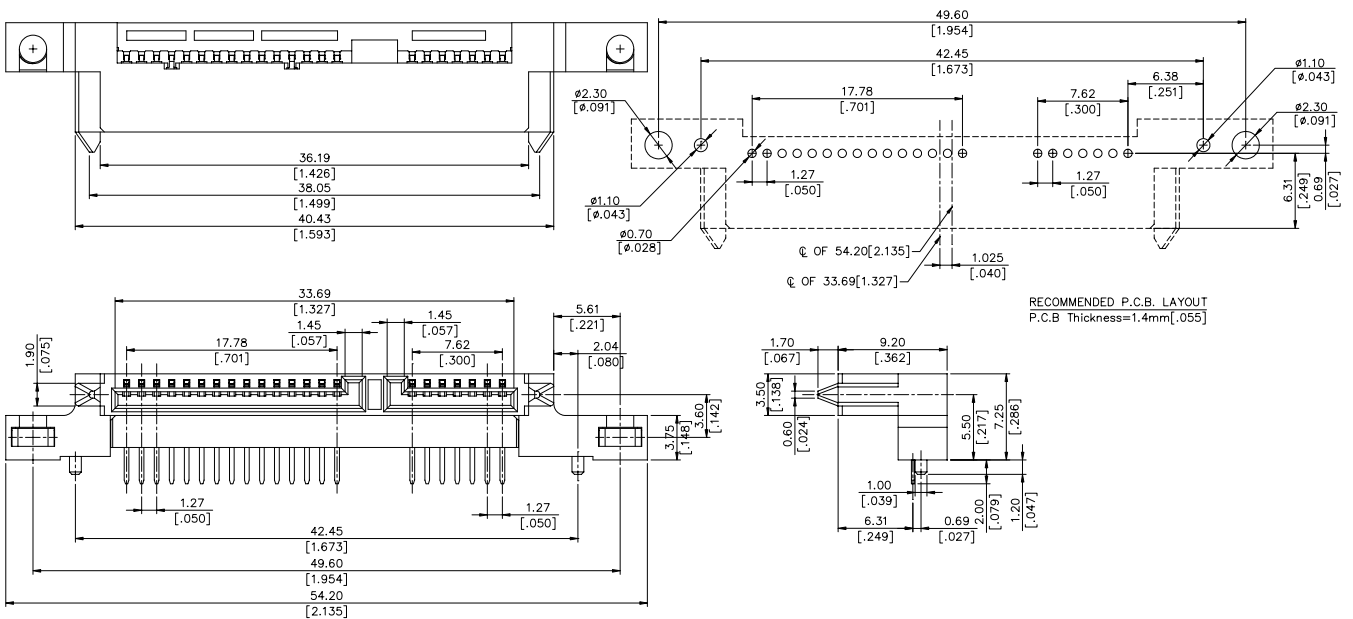
Housing: Thermoplastic, UL 94V-0 rated in Black Color.
Contact: Copper alloy
Plating: See "ORDERING INFORMATION"
Operating Temperature: -55 to +85

S-ATA Connector

LD Series
R/A ,T/H
Receptacle
1.27mm [.050"] Pitch
22 Pos.



DRAWING



ORDERING INFORMATION

PRODUCT NO. : LD 2 7 22 * - S 4 A L 6

