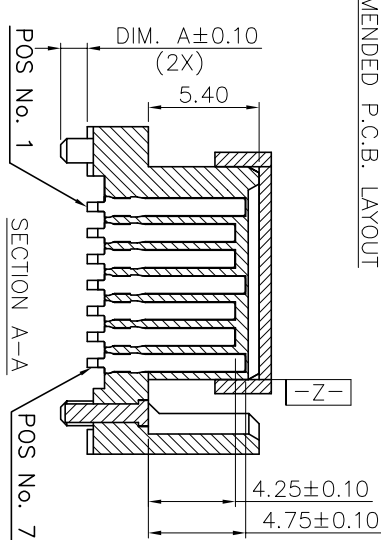
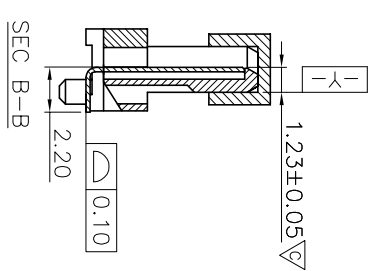
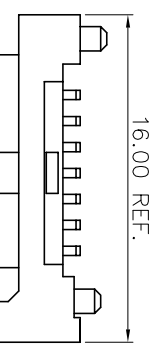
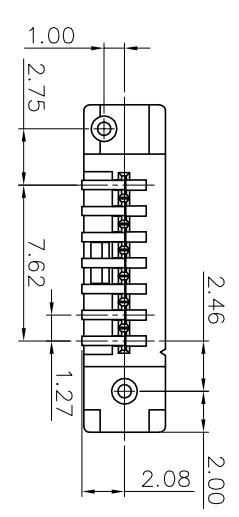
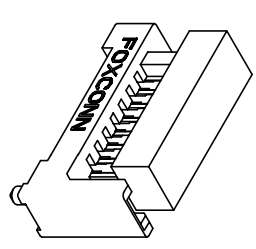
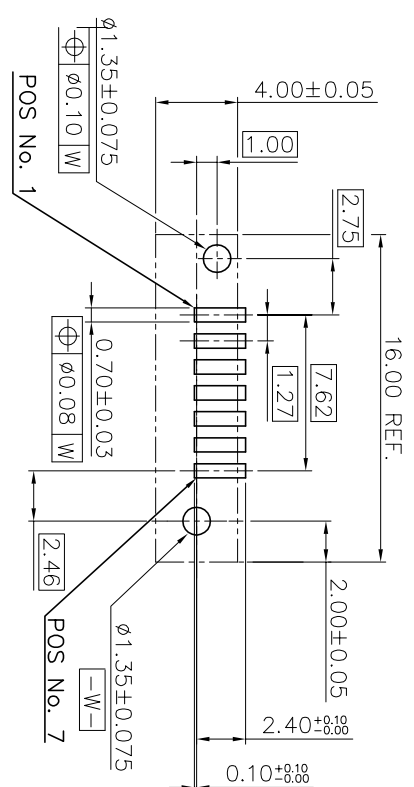
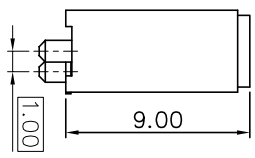
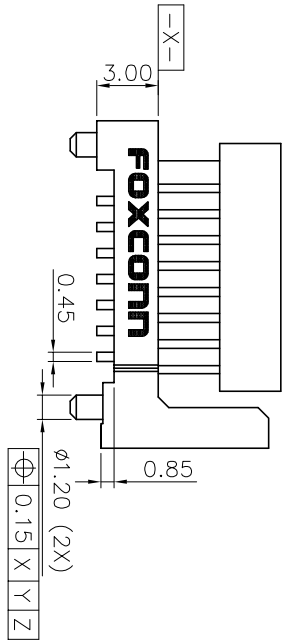
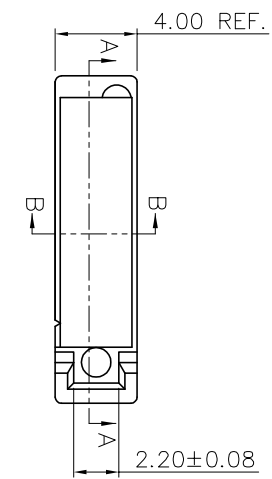


REV.	ECN. NO.	APPD.
A	HC056883	ANDY ZHOU
B	BC077072717	Yuson
C	BC087037733	Jdke W.Y



RECOMMENDED P.C.B. LAYOUT

- NOTES:
1. DIMENSIONS SHALL BE INTERPRETED PER ASME Y14.5M-1994
 2. THE CONCENTRATIONS OF B&C CAN SATISFY THE REQUIREMENTS OF HALOGEN-FREE IN DOCUMENT EP112.
 3. SPEC. OF PRODUCT ARE SHOWN ON DRAWING "303-0300-1828"
 4. MATERIAL OF PARTS ARE SHOWN ON DRAWING "303-0500-1828"
 5. DATE CODE: PLEASE REFER TO FOXCONN'S DOC. "SQ-3B0-070"
 6. HARMFUL MATERIAL CONTROL PLEASE FOLLOW FOXCONN'S DOC. "EP112".
 7. PLEASE CONTACT FOXCONN SALES REPRESENTATIVE TO VERIFY PRODUCT DETAILS & AVAILABILITY.

LD1507*-S06L6	1.50
LD1507*-S05L6	2.80
LD1507*-S04L6	1.30
PART No.	DIM. A

X±	X [±] 1°	UNITS	mm	NAME (INTENDED USE)	FOXCONN
X± 0.25	X [±]	MATL		SERIAL ATA	HON HAI PRECISION IND. CO., LTD.
XX± 0.15	XX [±]	FINISH		PART NO. (INTENDED USE)	TAIPEI, TAIWAN, R.O.C.
XXX± 0.10	XXX [±]			LD1507*-S0***	
THESE DRAWINGS AND SPECIFICATIONS ARE THE PROPERTY OF HON HAI PRECISION IND. CO., LTD. AND SHALL NOT BE REPRODUCED OR TRANSMITTED IN ANY FORM OR BY ANY MEANS WITHOUT THE WRITTEN CONSENT OF HON HAI PRECISION IND. CO., LTD.				QTY	
				CHKD:	
				DR: Jdm Li	4/21'08
				DWG No.:	303-0000-1460
				TITLE: CUSTOMER DRAWING, 7 POS. VERTICAL SMT, HOST PLUG	
				SCALE	SHEET
				N/A	1/1
				REV.	C

SPECIFICATIONS :

1. MATERIAL AND FINISH :

1-1. HOUSING :

HIGH TEMPERATURE THERMOPLASTIC , UL 94V-0

1-2. CONTACT :

COPPER ALLOY, NICKEL PLATING OVER ALL, THICKNESS 50u" MIN.,
TIN OR TIN/LEAD PLATING OVER NICKEL, THICKNESS 100u"MIN. ON SOLDER AREA,
GOLD PLATING OVER NICKEL ON CONTACT AREA,

1-3. RETENTION :

COPPER ALLOY, NICKEL PLATING OVER ALL, THICKNESS 50u" MIN.,
TIN OR TIN/LEAD PLATING OVER ALL, THICKNESS 100u"MIN..

1-4. COVER :

HIGH TEMPERATURE THERMOPLASTIC , UL 94V-0

1-5. HARMFUL MATERIAL CONTROL PLEASE FOLLOW DOC. NO. "EPI12"

2. PERFORMANCE :

2-1. CURRENT RATING : 1.5 Amps MAX. PER PIN.

2-2. OPERATING TEMPERATURE : -55°C TO +85°C.

3. ELECTRICAL :

3-1. LOW LEVEL CONTACT RESISTANCE(DRY CIRCUIT) : 30 MILLIOHMS MAX. INITIAL.

3-2. DIELECTRIC WITHSTANDING VOLTAGE : 500 VAC. AT SEA LEVEL.

3-3. INSULATION RESISTANCE : 1000 MEGAOHMS MIN. INITIAL.

4. MECHANICAL:

4-1. INSERTION FORCE: EIA-364-13, 45N MAX..

4-2. REMOVAL FORCE: EIA-364-13, 10N MIN..

4-3. DURABILITY: 500 CYCLES

4-4. CONTACT RETENTION FORCE: 3N MIN.PER PIN.

5. ENVIRONMENTAL:

5-1. PHYSICAL SHOCK: PASS EIA-364-27, CONDITION H.

5-2. VIBRATION: PASS EIA-364-28, CONDITION V TEST LETTER A.

5-3. HUMIDITY: PASS EIA-364-31, METHOD II TEST CONDITION A.

6. PLEASE CONTACT FOXCONN SALES REPRESENTAIVE TO VERIFY

PRODUCT & AVAILABILITY.

FOXCONN HON HAI PRECISION IND. CO.,LTD.
TAIPEI, TAIWAN, R.O.C.

APPD. : Jake W.Y

TITLE : SPECIFICATION, 7 POS.
VERTICAL SMT, PLUG,S-ATA

CHKD. :

PROD. SERIES : LD1507*-S04/S05/S06**

DR. :
Jam Li 4/21'08

DWG. NO : 303-0300-1460

REV. : B SHEET : 1/1

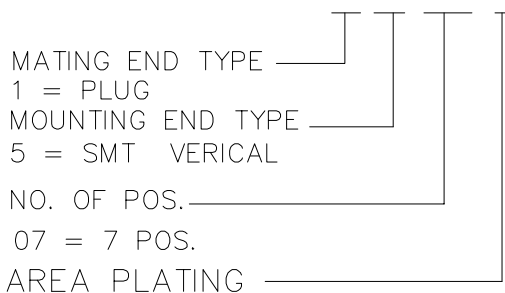
B	BC087037771	Jake W.Y
A	HC056884	Yu Sun 7/15'05
REV.	ECN NO	APPD.

ITEM	DESC.	Q'TY	MATERIAL	TREATMENT	REMARK
1	HOUSING	1	HIGH TEMPERATURE THERMOPLASTIC	UL 94V-0 BLACK	
2	CONTACT	SEE NOTE BELOW	COPPER ALLOY	A) NICKEL PLATING OVER ALL THICKNESS : 50 u" MIN. B) TIN OR TIN/LEAD PLATING OVER NICKEL.THICKNESS : 100 u" MIN ON SOLDER AREA C) GOLD PLATING ON CONTACT AREA	
3	RETENTION PIN	2	COPPER ALLOY	A) NICKEL PLATING OVER ALL THICKNESS : 50 u" MIN. B) TIN OR TIN/LEAD PLATING OVER NICKEL THICKNESS:100 u" MIN	
4	COVER	1	HIGH TEMPERATURE THERMOPLASTIC	UL 94V-0 BLACK	

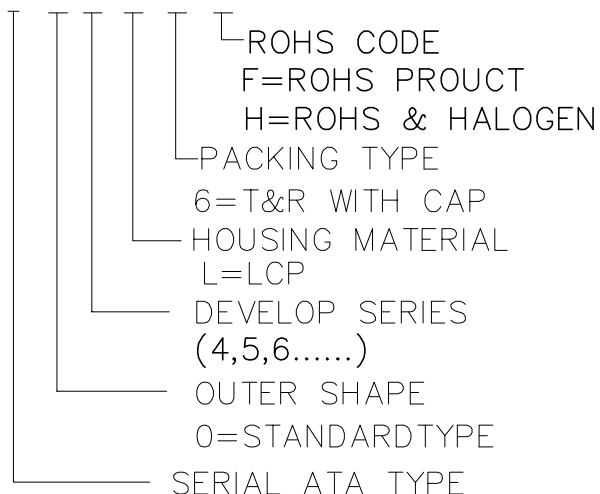
NOTE :

- HARMFUL MATERIAL CONTROL PLEASE FOLLOW DOC. NO. "EPI12"
- PLEASE CONTACT FOXCONN SALES REPRESENTATIVE TO VERIFY PRODUCT DETAILS & AVAILABILITY.
- PRODUCT NO. MATRIX :

L D 1 5 0 7 * - S 0 * L 6 *



F: GOLD FLASH WITH RoHS COMPLIANCE
H: GOLD PLATING 30u" MIN.
WITH RoHS COMPLIANCE
V: GOLD PLATING 15u" MIN.
WITH RoHS COMPLIANCE



FOXCONN		HON HAI PRECISION IND. CO.,LTD. TAIPEI, TAIWAN, R.O.C.	
APPD. :	Jake W.Y	TITLE :	MATERIAL, VERTICAL, SMT,PLUG, S-ATA
CHKD. :		PROD. SERIES :	LD1507*-S04/S05/S06**
DR. :	Jam Li 4/21'08	DWG. NO :	303-0500-1460
		REV. :	B
		SHEET :	1/1

B	BC087037800	Jake W.Y
A	HC056885	Yu Sun 9/15'05
REV.	ECN NO	APPD.