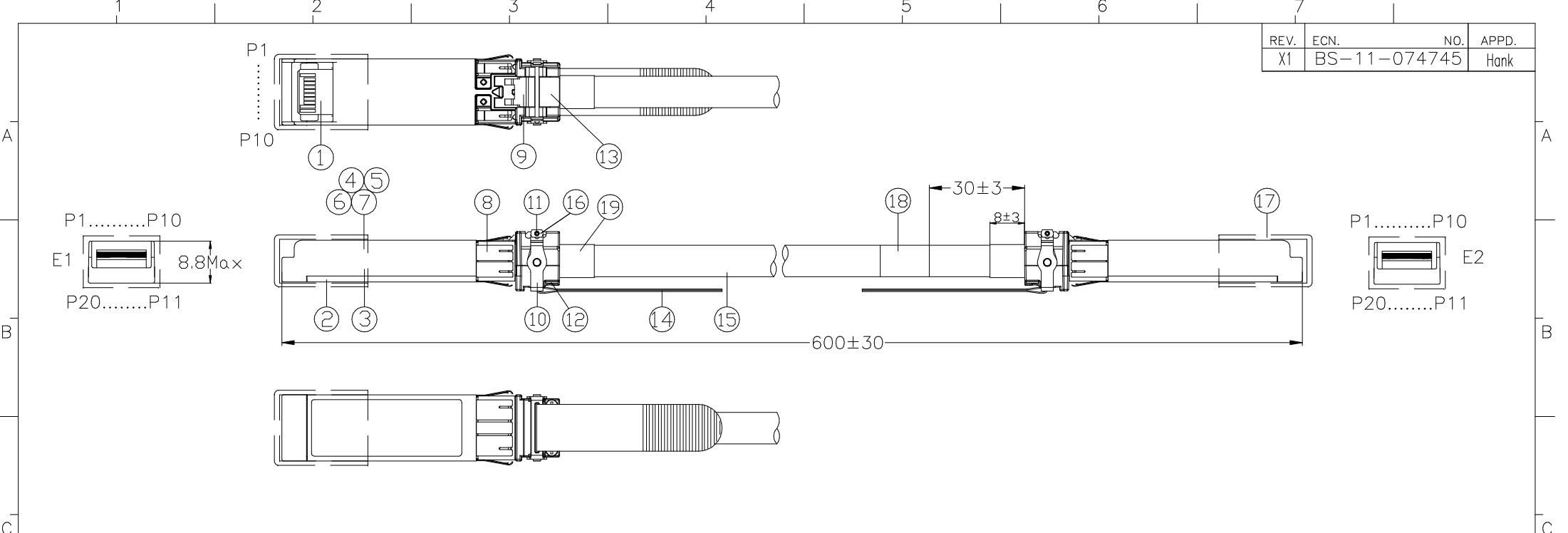


REV.	ECN.	NO.	APPD.
X1	BS-11-074745		Hank



19	H.S TUBE	080-2008-620	FOR 28 AWG	0.4M
18	CABLE LABEL	080-1004-761	CABLE LABEL	1PC
17	ESD HDPE(CAP)	901-0108-008	ESD HDPE RESIN	2PCS
16	WASHER	023-0002-599	WASHER	2PCS
15	RAW CABLE	791-3030-020	2PAIRS, 28AWG, 100 ohms	550MM
14	PULL LOOP	085-0001-4584	T=0.26mm BLACK	2PCS
13	PLASTIC RAMP	013-0004-2697	COLOR:BLACK	2PCS
12	SCREW-5.5mm	060-0001-2184	SCREW-5.5mm	4PCS
11	METAL PIN	023-0001-2167	METAL PIN	2PCS
10	ACTUATOR	023-1001-2149	ACTUATOR	2PCS
9	SPRING	024-0002-1349	SPRING	2PCS
8	EMI SHELL	023-0001-7720	EMI SHELL	2PCS
7	CONDUCTIVE TAPE	081-1105-875	CONDUCTIVE TAPE	0.08m
6	HOT MELT GLUE	086-0001-1087	HOT MELT GLUE	0.008KG
5	OUTER RING	024-0004-2037	OUT RING FOR 28AWG	2PCS
4	INNER RING	024-0002-2037	INNER RING FOR 28AWG	2PCS
3	DIE-CAST BASE	023-3002-2148	DIE-CAST BASE	2PCS
2	DIE-CAST COVER	023-3002-2147	DIE-CAST COVER	2PCS
1	PCBA (PASSIVE)	2Q012AP01-600-G	FOR SFP+ PASSIVE	2PCS
NO.	PART NAME	FOXCONN P/N	DESCRIPTION	QTY

NOTES1:

1. Harmful material control please follow DOC. NO. 'EPI12'.
2. Dimension marked  $\nabla$  should be checked.
3. Cable: 2 individual shielded pairs with double shielded overall, jacket color: black. Differential Impedance 100±5 Ohms.
4. Extraction force: 12.5N MAX. Insertion force: 18N MAX.
5. Insertion/Remove cycles: 50 cycles.
6. Refer to Alcatel Lucent Document#: 010333-00
7. Materials process and product compliant to EU Directive 2002/95/EC(RoHS).
8. Operating Temperature Range: -40°C to +80°C.

X.± 3	X°±	UNITS mm	NAME(INTENDED USE)	<b>FOXCONN</b> HON HAI PRECISION IND. CO.,LTD. TAIPEI, TAIWAN, R.O.C.
.X± 0.3	.X°±	MAT'L	CUSTOMER	
.XX± 0.20	.XX°±	FINISH	PART NO.(INTENDED USE)	TITLE: CABLE ASSEMBLY, SFP+ PASSIVE COPPER
.XXX±	.XXX°±		APPD: Hank Chang 7/12'11	DWG NO.: 315-0000-3346
THESE DRAWINGS AND SPECIFICATIONS ARE THE PROPERTY OF HON HAI PRECISION IND. CO., LTD. AND SHALL NOT BE REPRODUCED, COPIED OR USED IN ANY MANNER WITHOUT THE PRIOR WRITTEN CONSENT OF HON HAI PRECISION IND. CO., LTD.			Q'TY	CHKD: Jerry Zhu 7/12'11
				DR: Xu Yan 7/12'11
				SCALE SHEET REV. 1:1 1/4 X1

REV.	ECN.	NO.	APPD.

EE-PROM SPECIFICATION:

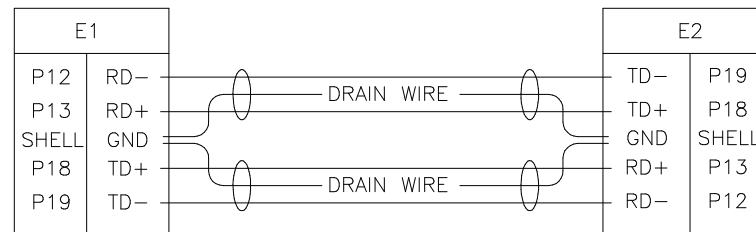
Data Address	Data
0	03
1	04
2	21
3	81
4	00
5	00
6	04
7	41
8	04
9	80
10	D5
11	00
12	67
13	00
14	00
15	00
16	00
17	00
18	01
19	00
20..35	FOXCONN
36	00
37..39	00016C
40..55	2GSPWWX-L4G-EN
56..59	A
60	00
61	00
62	00
63	0-62 CHECKSUM

64	00
65	00
66	00
67	00
68..83	C0908110001
84..91	DATE CODE
92	00
93	00
94	00
95	64-94 CHECKSUM
96..127	00
128...255	00

Notes2:

- Memo: 68-83 C0908110001  
 Serial Number  
 Day  
 Month  
 Year
- Memo: 84-91 090811  
 Day  
 Month  
 Year
- Memo: 18 03  
 Cable Length: 01=0.6m

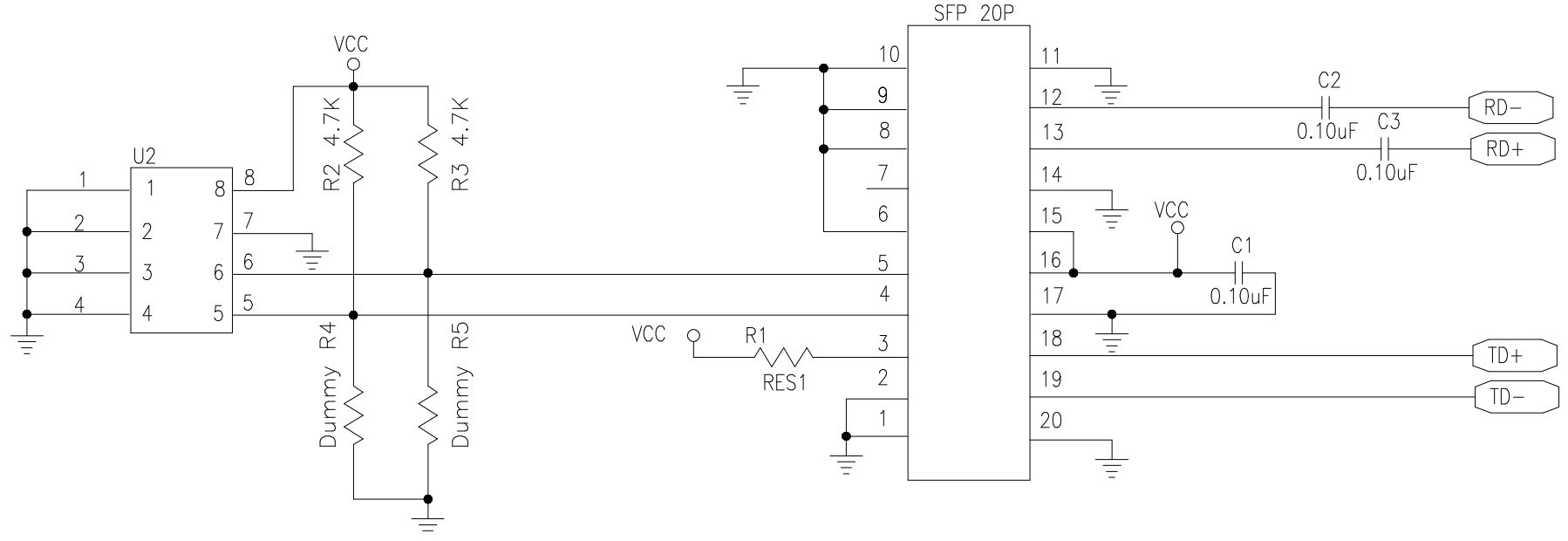
CABLE CONNECTION:



x.± 3	x°.± mm	UNITS	NAME(INTENDED USE)	<b>FOXCONN</b> HON HAI PRECISION IND. CO.,LTD. TAIPEI, TAIWAN, R.O.C.	
.x± 0.3	.x°.±	MAT'L	CUSTOMER		
.xx± 0.20	.xx°.±	FINISH	PART NO.(INTENDED USE)	TITLE:	
.xxx±	.xxx°.±		2GSPWWX-L4G-EN	SFP+ PASSIVE COPPER	
THESE DRAWINGS AND SPECIFICATIONS ARE THE PROPERTY OF HON HAI PRECISION IND. CO., LTD. AND SHALL NOT BE REPRODUCED, COPIED OR USED IN ANY MANNER WITHOUT THE PRIOR WRITTEN CONSENT OF HON HAI PRECISION IND. CO., LTD.			APPD: Hank Chang 7/12'11	DWG NO.:	
			315-0000-3346		
Q'TY			CHKD: Jerry Zhu 7/12'11		
			DR: Xu Yan 7/12'11		SCALE SHEET REV.
			1/1	2/4	X1

REV.	ECN.	NO.	APPD.

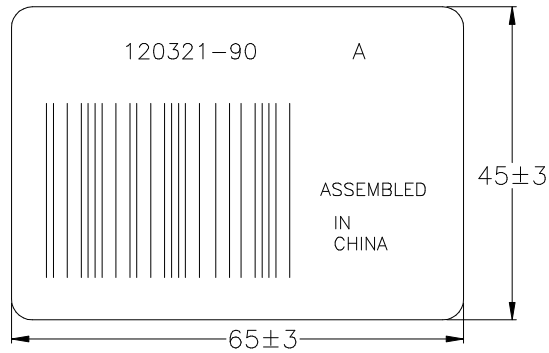
Passive SFP+ PCB SCHEME:



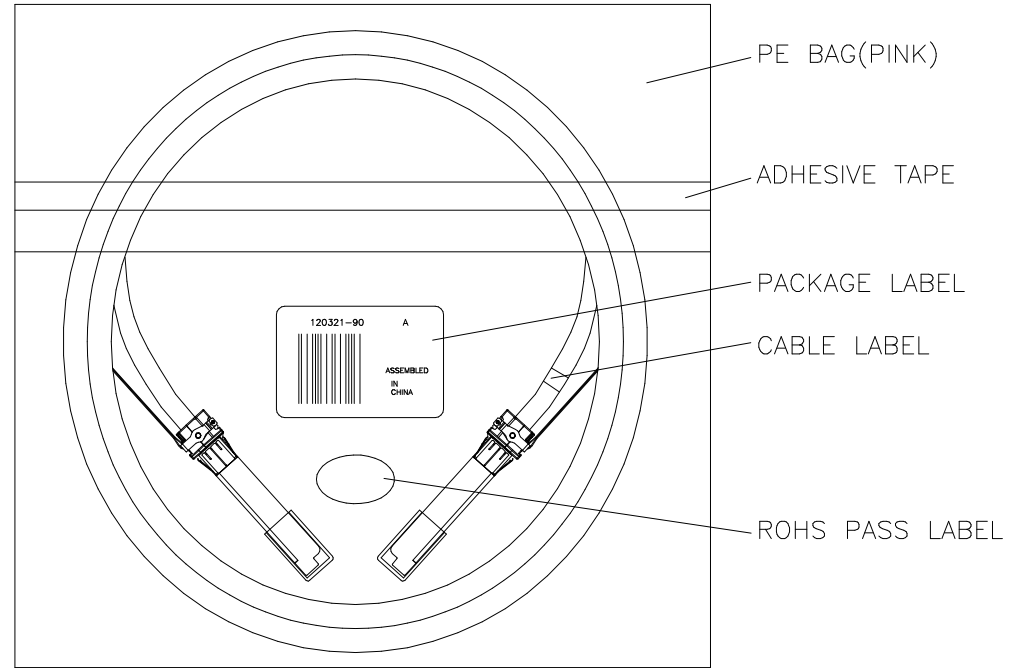
X.± 3	X°± mm	UNITS	NAME(INTENDED USE)	<b>FOXCONN</b> HON HAI PRECISION IND. CO.,LTD. TAIPEI, TAIWAN, R.O.C.						
.X± 0.3	.X°±	MAT'L	CUSTOMER							
.XX± 0.20	.XX°±	FINISH	PART NO.(INTENDED USE)	TITLE: CABLE ASSEMBLY, SFP+ PASSIVE COPPER						
.XXX±	.XXX°±		2GSPWWX-L4G-EN	APPD: Hank Chang 7/12'11	DWG NO.: 315-0000-3346					
THESE DRAWINGS AND SPECIFICATIONS ARE THE PROPERTY OF HON HAI PRECISION IND. CO., LTD. AND SHALL NOT BE REPRODUCED, COPIED OR USED IN ANY MANNER WITHOUT THE PRIOR WRITTEN CONSENT OF HON HAI PRECISION IND. CO., LTD.			Q'TY	 <table border="1"> <tr> <td>SCALE</td> <td>SHEET</td> <td>REV.</td> </tr> <tr> <td>1/1</td> <td>3/4</td> <td>X1</td> </tr> </table>	SCALE	SHEET	REV.	1/1	3/4	X1
			SCALE		SHEET	REV.				
			1/1		3/4	X1				
CHKD: Jerry Zhu 7/12'11										
DR: Xu Yan 7/12'11										

REV.	ECN.	NO.	APPD.

PACKAGE LABEL SPECIFICATION:



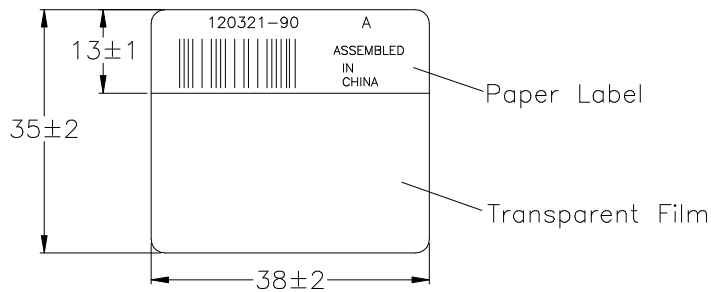
PACKAGE SPECIFICATION:



NOTES3:

1. Bar-code: Code 128, Content: "ALU P/N"
2. Bar-code Height: approximate 25mm  
Bar-code wide bar to narrow bar ratio: 2.0  
small bar minimum width 0.25mm.
3. Font type: Arial  
Font color: Black  
Font size:
  - Mark with Alcatel part number and revision 2.2mm\*1.8mm.
  - "Assembled in China" text: 1.8mm\*1.2mm.

CABLE LABEL SPECIFICATION:



NOTES4:

1. Bar-code: Code 128, Content: "ALU P/N"
2. Bar-code Height: approximate 7mm  
Bar-code wide bar to narrow bar ratio: 1.0
3. Font type: Arial  
Font color: Black  
Font size:
  - Mark with Alcatel part number and revision 1.5mm\*1.2mm.
  - "Assembled in China" text: 1.2mm\*0.8mm.

x.± 3	x°±	UNITS mm	NAME(INTENDED USE)	<b>FOXCONN</b> HON HAI PRECISION IND. CO.,LTD. TAIPEI, TAIWAN, R.O.C.
.x± 0.3	.x°±	MAT'L	CUSTOMER	
.xx± 0.20	.xx°±	FINISH	PART NO.(INTENDED USE)	TITLE:
.xxx±	.xxx°±		2GSPWWX-L4G-EN	APPD: Hank Chang 7/12'11
THESE DRAWINGS AND SPECIFICATIONS ARE THE PROPERTY OF HON HAI PRECISION IND. CO., LTD. AND SHALL NOT BE REPRODUCED, COPIED OR USED IN ANY MANNER WITHOUT THE PRIOR WRITTEN CONSENT OF HON HAI PRECISION IND. CO., LTD.			CHKD: Jerry Zhu 7/12'11	DWG NO.: 315-0000-3346
			DR: Xu Yan 7/12'11	
			Q'TY	SCALE SHEET REV.
				1/1 4/4 X1